



# Colorado Ag Water Alliance

*"Committed to the preservation of agriculture through the wise use of Colorado's water resources"*

**Greg Peterson**

**Executive Director**

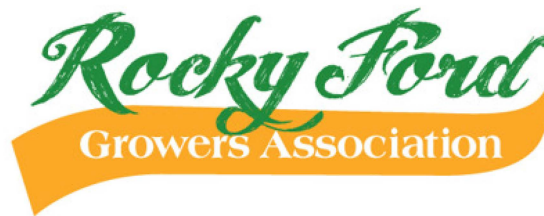
**(720) 244-4629**

**[coagwater@gmail.com](mailto:coagwater@gmail.com)**

**[www.coagwater.org](http://www.coagwater.org)**



colorado *Corn*



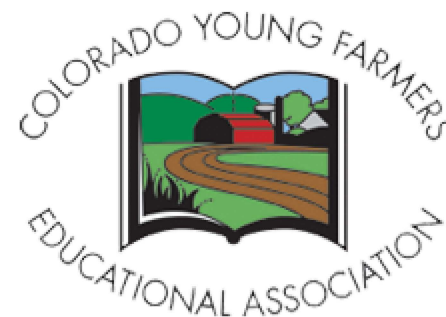
*American Values.  
Hometown Roots.*



QUALITY AT ITS PEAK



**COLORADO**  
DAIRY FARMERS



What do we mean by sustainable  
agriculture?

Do we want an agricultural industry in  
Colorado?

# The Irrigation Efficiency Paradox

Opportunities to Conserve Water in  
Agriculture?

ANALYSIS & TECHNICAL UPDATE TO THE

# COLORADO WATER PLAN



VOLUME I

Analysis and Technical Update to the Colorado Water Plan



According to the Colorado Water Plan Technical Update (2019), there will be significant decreases to irrigated acreage statewide.

Currently irrigated acres: 3,460,000

Estimated 2050 Irrigated Acreage

High: 2,975,700 acres (14% decrease)

Low: 2,748,200 acres (20% decrease)



Lake Henry

Lake Meredith Reservoir

Ordway

Fowler

Rocky Ford

71

96

96

50

167

207

50

167

71

109



## Crowley County – Economic Snapshot

35% of households in low income energy assistance

36% receive food assistance benefits

\$42,135 median income  
(Colorado: \$72,331)

40% of population is below the poverty line  
(Colorado: 9.3%)

© 2014 Google



© 2014 Google

Irrigated Agriculture and  
Property Taxes

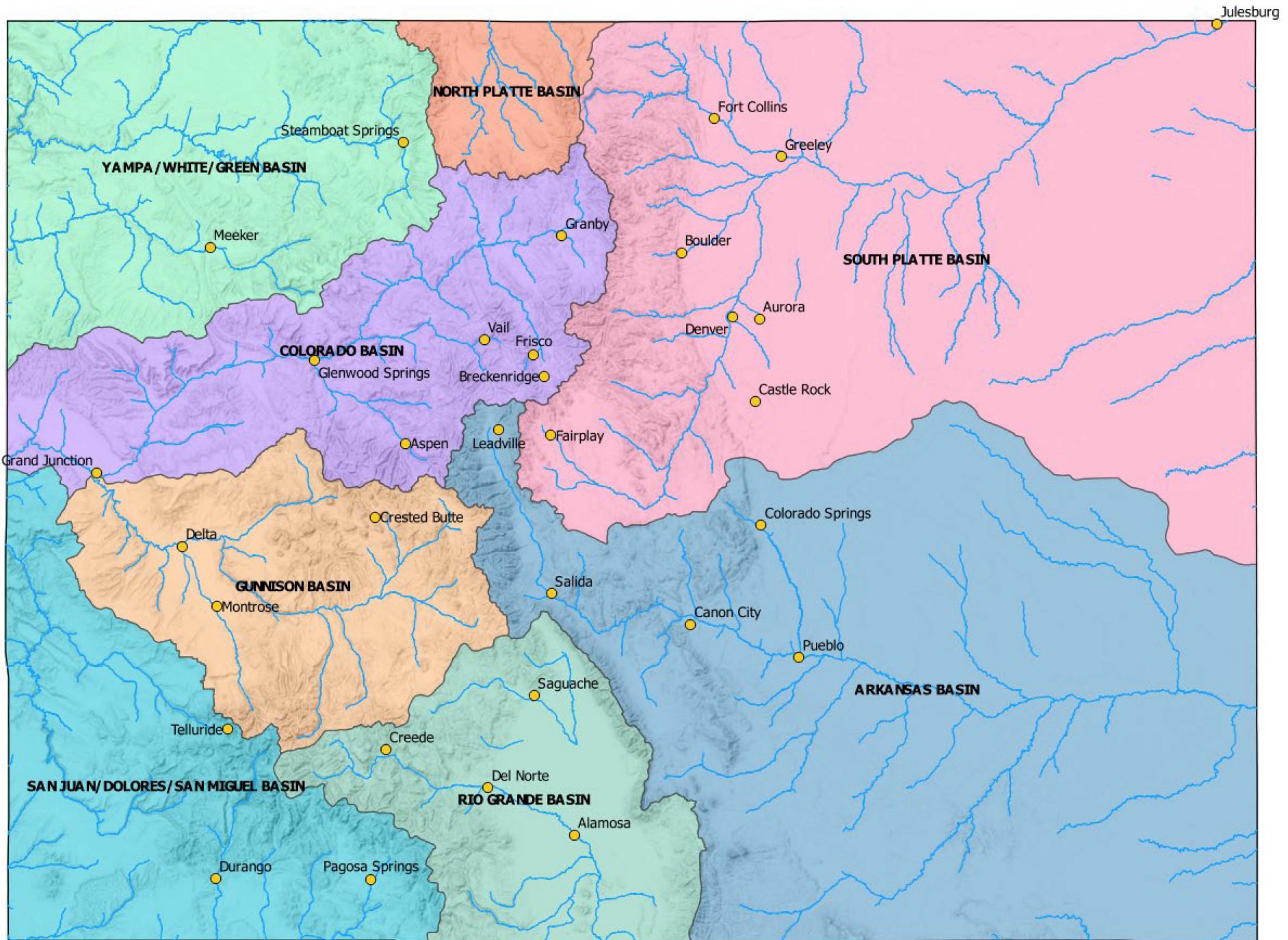
Agricultural-Centric Economy

Losses from Energy Economy

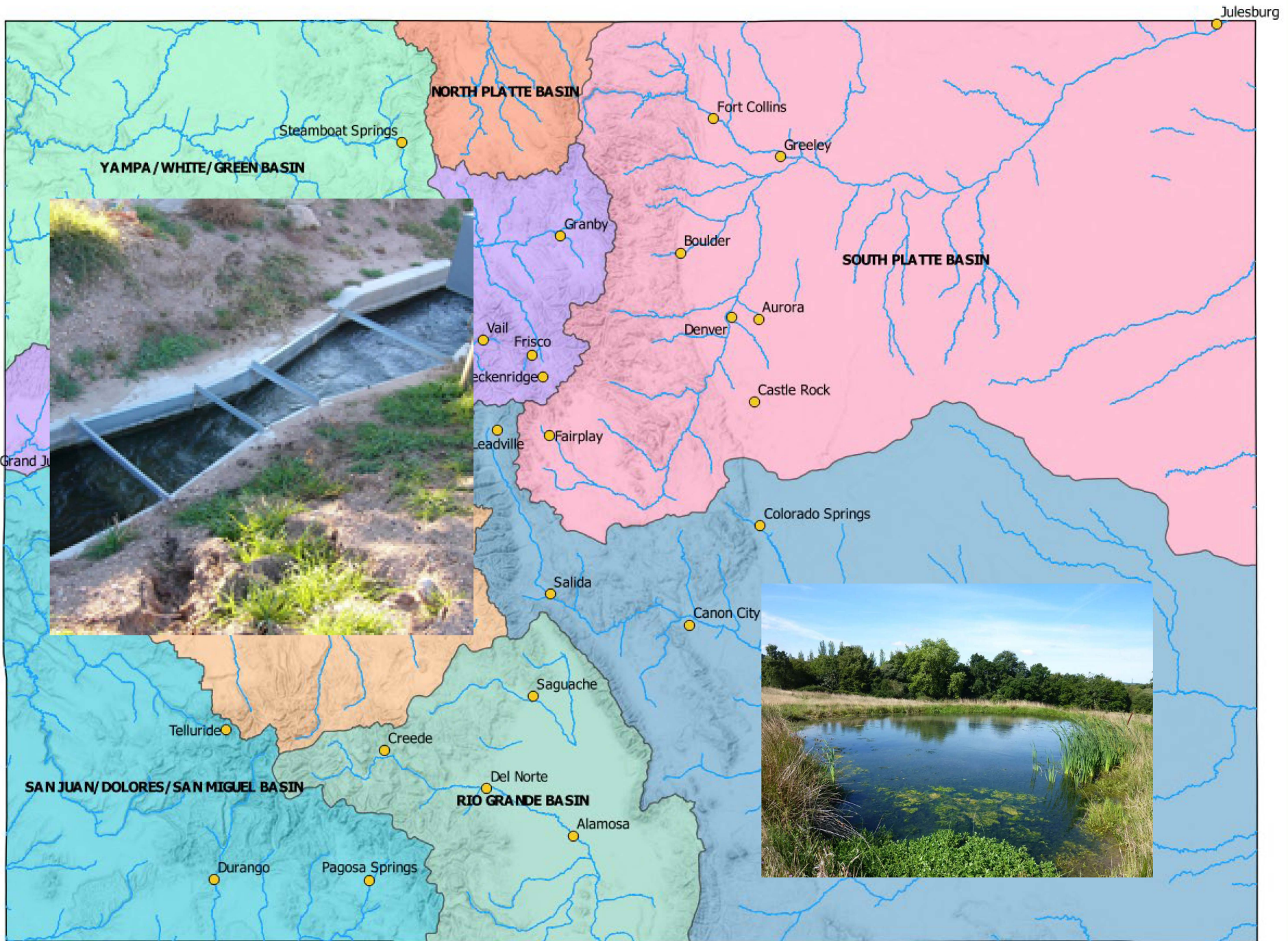
Long Recovery from the  
Recession

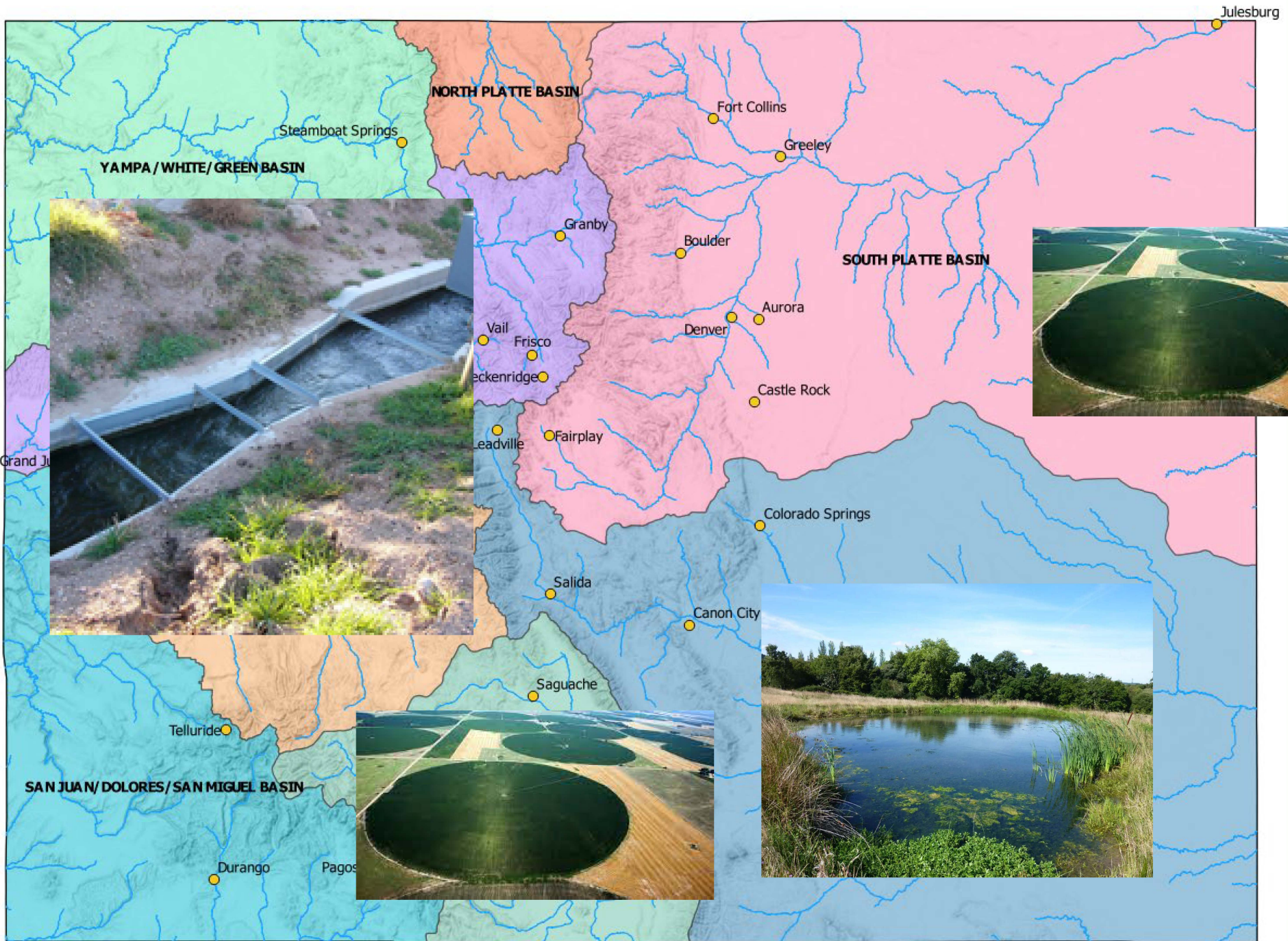
Education Disparity











# Urban Sprawl and Increased Municipal Water Demand

- Loss of agricultural land along I-25 corridor
- Increased municipal water use
- More transmountain diversions
- Difficulty and opposition to storage projects



## Alternative Water Transfers in Colorado

A Review of Alternative Transfer  
Mechanisms for Front Range Municipalities

---

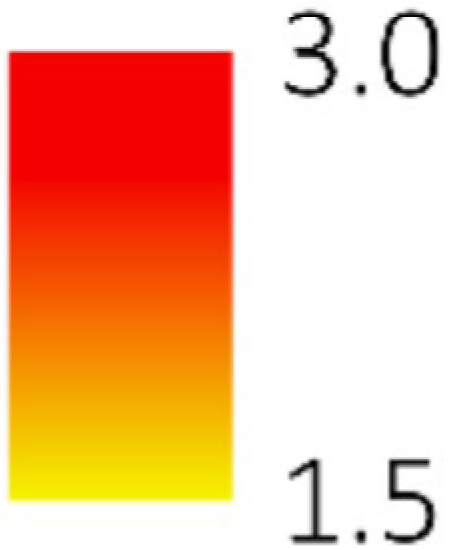
# Impacts of Drought and Warming

## Climate

- Earlier runoff
- Increased temperatures (increased crop consumptive use)
- Less consistent precipitation
- Dust on snow



**Annual  
Average  
Temperature  
Change  
(Celsius)**



Technical Update to the Water Plan (2019) Temperature Offsets and Precipitation Change Factors Implicit in the CRWAS-II Planning Scenario

# Increased Regulations – Water Quality

- Regulation 85 – Reg 85
- Increased scrutiny of agricultural run-off
- Opportunity to prevent future regulations?

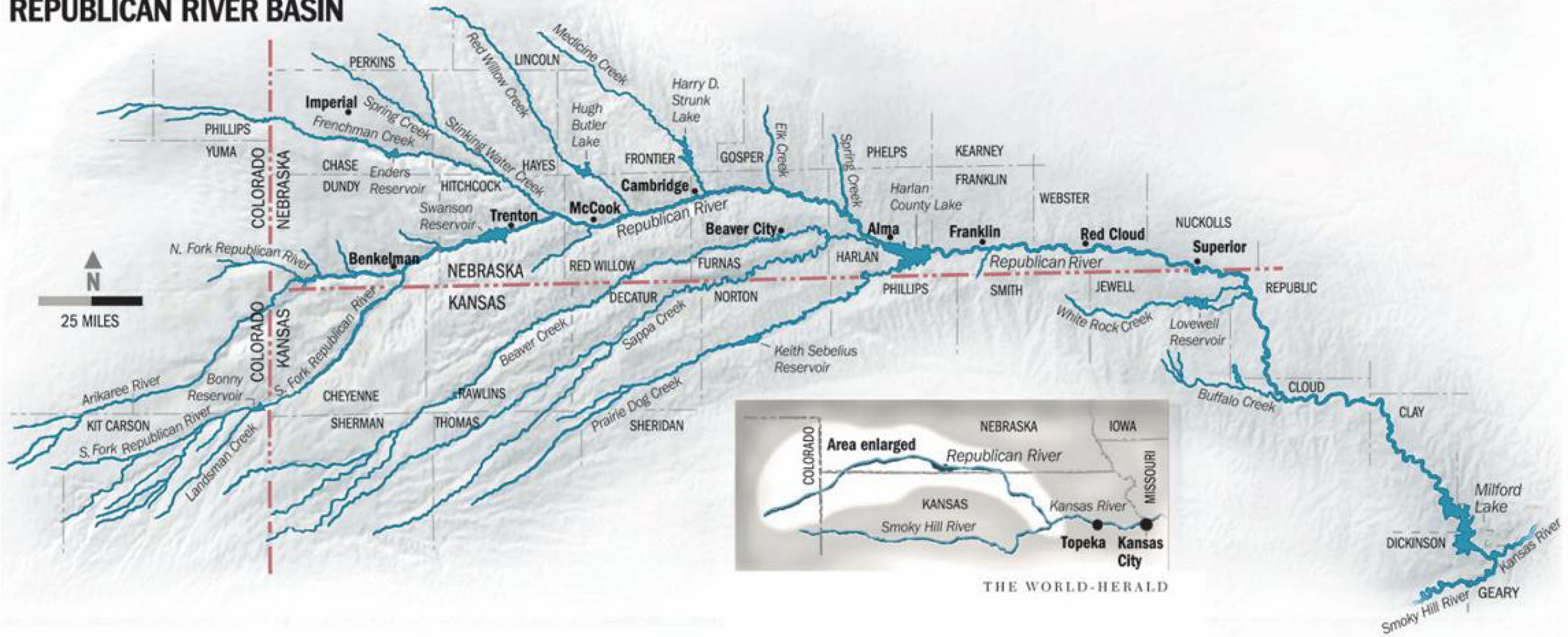


**COLORADO**  
Department of Public  
Health & Environment



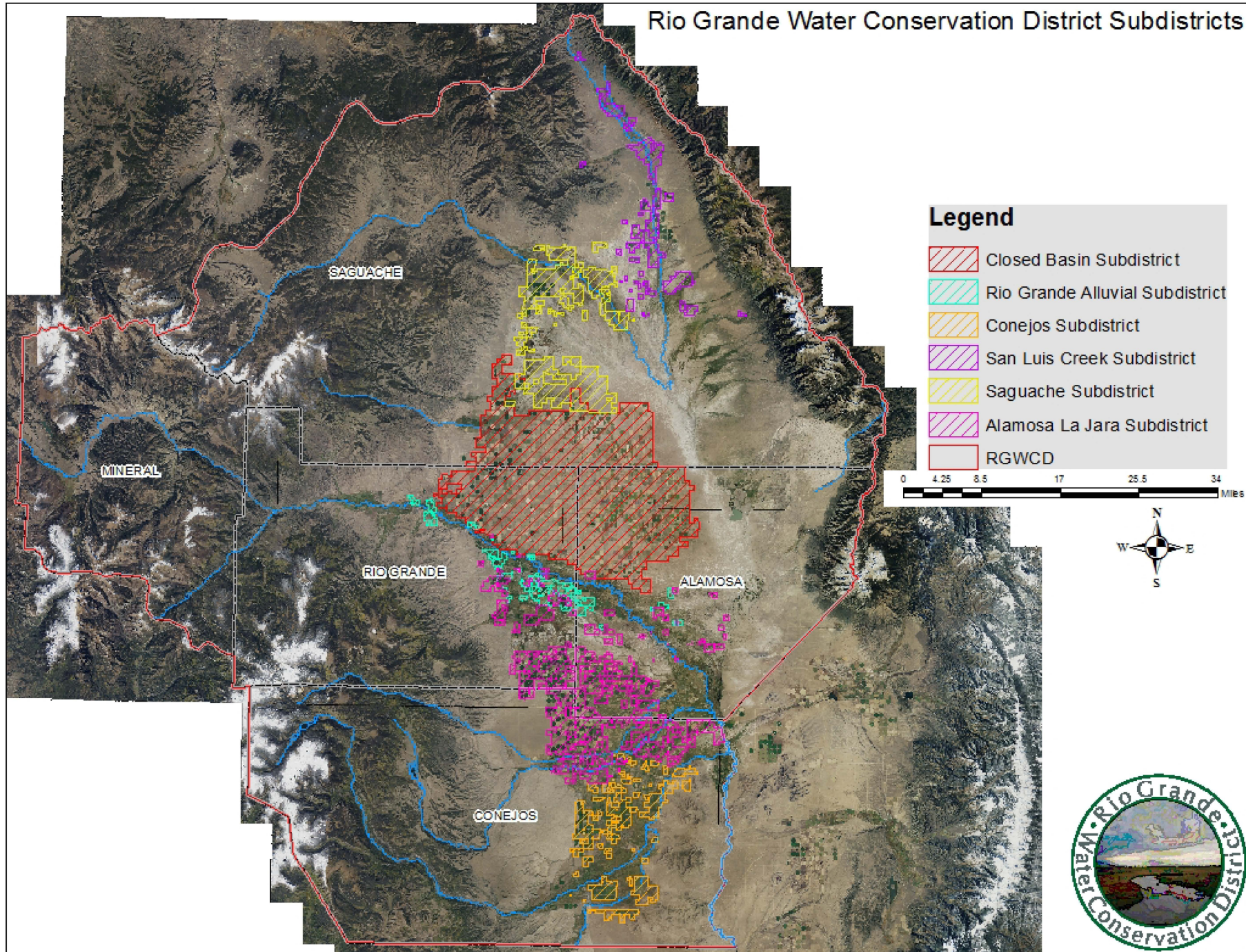


# REPUBLICAN RIVER BASIN



THE WORLD-HERALD

# Rio Grande Water Conservation District Subdistricts





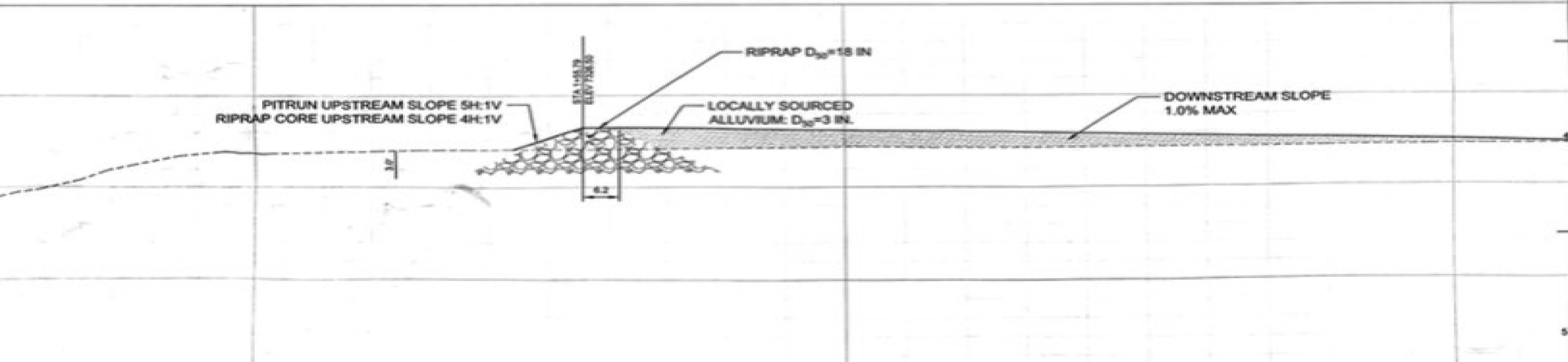
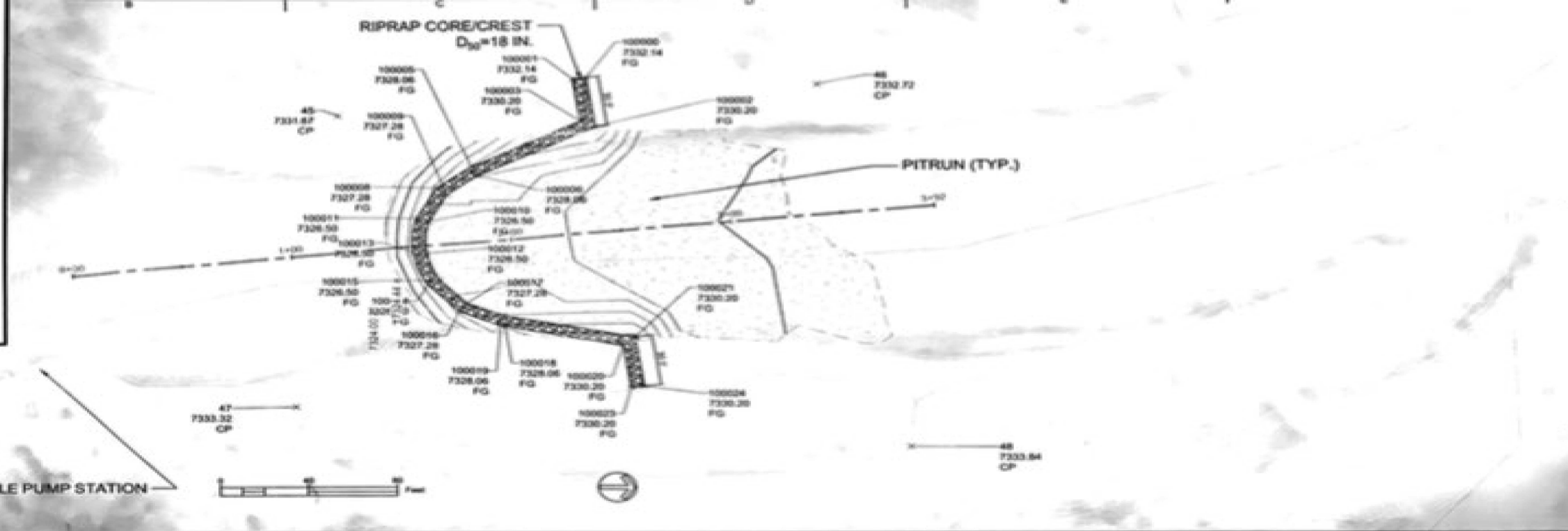








NO.	ELEVATION	DESCRIPTION
100000	7332.14	FG
100001	7332.14	FG
100002	7330.20	FG
100003	7330.20	FG
100004	7327.28	FG
100005	7327.28	FG
100006	7327.28	FG
100007	7327.28	FG
100008	7327.28	FG
100009	7327.28	FG
100010	7327.28	FG
100011	7326.50	FG
100012	7326.50	FG
100013	7326.50	FG
100014	7326.50	FG
100015	7326.50	FG
100016	7327.28	FG
100017	7327.28	FG
100018	7328.06	FG
100019	7328.06	FG
100020	7330.20	FG
100021	7330.20	FG
100022	7330.20	FG
100023	7330.20	FG
100024	7330.20	FG
100025	7330.20	FG
100026	7330.20	FG
100027	7330.20	FG
100028	7330.20	FG
100029	7330.20	FG
100030	7330.20	FG
100031	7330.20	FG
100032	7330.20	FG
100033	7330.20	FG
100034	7330.20	FG
100035	7330.20	FG
100036	7330.20	FG
100037	7330.20	FG
100038	7330.20	FG
100039	7330.20	FG
100040	7330.20	FG
100041	7330.20	FG
100042	7330.20	FG
100043	7330.20	FG
100044	7330.20	FG
100045	7330.20	FG
100046	7330.20	FG
100047	7330.20	FG
100048	7330.20	FG
100049	7330.20	FG
100050	7330.20	FG
100051	7330.20	FG
100052	7330.20	FG
100053	7330.20	FG
100054	7330.20	FG
100055	7330.20	FG
100056	7330.20	FG
100057	7330.20	FG
100058	7330.20	FG
100059	7330.20	FG
100060	7330.20	FG
100061	7330.20	FG
100062	7330.20	FG
100063	7330.20	FG
100064	7330.20	FG
100065	7330.20	FG
100066	7330.20	FG
100067	7330.20	FG
100068	7330.20	FG
100069	7330.20	FG
100070	7330.20	FG
100071	7330.20	FG
100072	7330.20	FG
100073	7330.20	FG
100074	7330.20	FG
100075	7330.20	FG
100076	7330.20	FG
100077	7330.20	FG
100078	7330.20	FG
100079	7330.20	FG
100080	7330.20	FG
100081	7330.20	FG
100082	7330.20	FG
100083	7330.20	FG
100084	7330.20	FG
100085	7330.20	FG
100086	7330.20	FG
100087	7330.20	FG
100088	7330.20	FG
100089	7330.20	FG
100090	7330.20	FG
100091	7330.20	FG
100092	7330.20	FG
100093	7330.20	FG
100094	7330.20	FG
100095	7330.20	FG
100096	7330.20	FG
100097	7330.20	FG
100098	7330.20	FG
100099	7330.20	FG
100100	7330.20	FG





Do we want an agricultural  
industry in Colorado?

# Do we want an agricultural industry in Colorado?

Supporting Storage?

Investing in Water Infrastructure – Ballot Measures?

Less buy and dry of agriculture?

Less regulations?

# Do we want an agricultural industry in Colorado?

Supporting Storage?

Investing in Water Infrastructure – Ballot Measures?

Less buy and dry of agriculture?

Less regulations?

Taking the time to understand agricultural producers



# Colorado Ag Water Alliance

*"Committed to the preservation of agriculture through the wise use of Colorado's water resources"*

## Questions?

**Greg Peterson**

**Executive Director**

**(720) 244-4629**

**[coagwater@gmail.com](mailto:coagwater@gmail.com)**

**[www.coagwater.org](http://www.coagwater.org)**