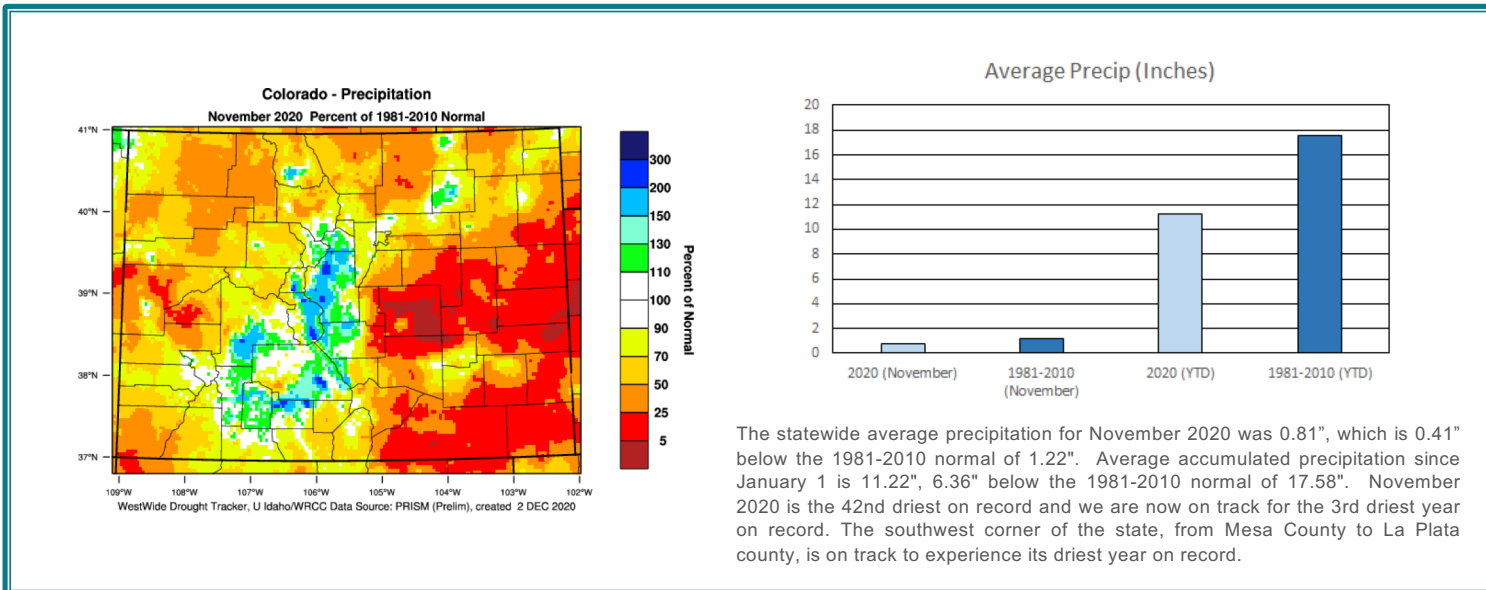
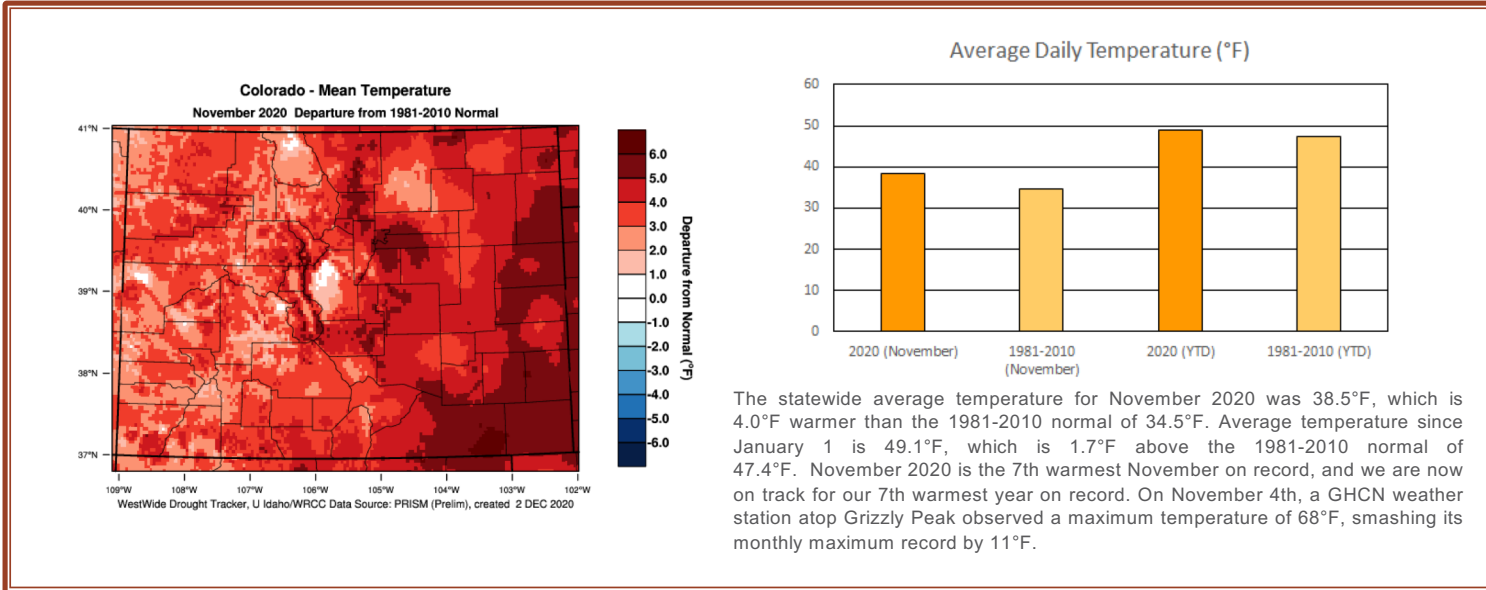


# November 2020 Monthly Climate Summary



## Daily Records (Tied | Broken) Total

### High Max T

(73 | 279) **352**  
Highest Temp: 87°F,  
Lamar, November 6th

### Low Max T

(9 | 22) **31**

### High Min T

(50 | 338) **388**

### Low Min T

(8 | 5) **13**  
Lowest Temp: -23°F,  
Antero Reservoir, November 30th

### Precipitation

(10 | 54) **64**  
Greatest Daily Precip: 3.00",  
Weminuche Wilderness, November 7th

### Snowfall

(1 | 8) **9**  
Greatest Daily Snowfall: 18.0",  
Ridgway, November 25th



# November 2020 Monthly Climate Summary

## November News Feed

### News stories featuring Climate Center staff:

Vail Valley snow outlook not great, but it's early:

<https://www.vaildaily.com/news/vail-valley-snow-outlook-not-great-but-its-early/>

### Other News stories:

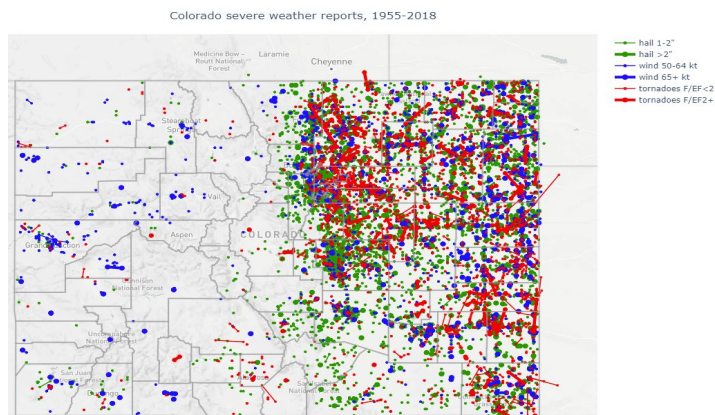
In a rural Eastern Plains community plagued by drought, mental health stigma won't be easy to

overcome: <https://www.denverpost.com/2020/12/06/colorado-eastern-plains-community-drought-mental-health-stigma/>

The rancher trying to solve the West's water

crisis: <https://www.politico.com/news/magazine/2020/12/04/rancher-colorado-river-climate-west-water-crisis-341705>

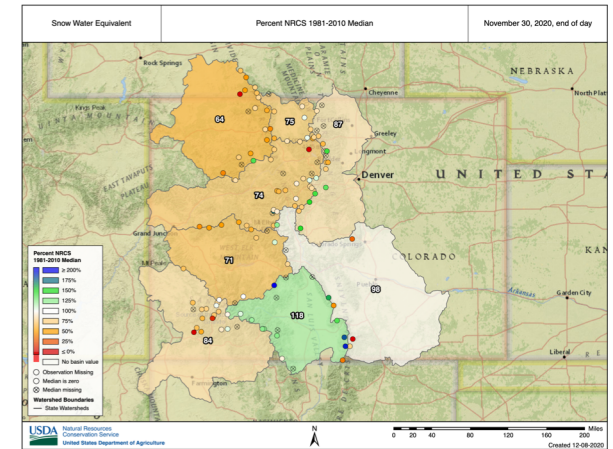
## Severe Weather History Interactive Map



[This map](#) shows all severe weather reports in Colorado from 1955-2018. Click items in the legend to toggle on/off hail, wind and tornado reports.

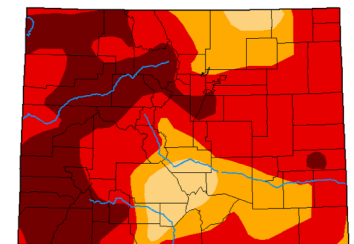
## Snowpack Update

Snowpack at the end of November was below average statewide. The one bright spot was the eastern San Juan Mountains, which benefitted from an impressive snowstorm on November 8-10. It's still early in the snow season, but things are not off to a great start following the hot, dry summer.



## Drought continues

The drought persisted through November, with only minor changes to the US Drought Monitor. Exceptional drought (D4) expanded in southwestern Colorado due to continued lack of precipitation. D4 increased from 21% to 27% of the state. A couple snowstorms in the San Luis Valley led to some improvement in drought conditions there.



US Drought Monitor  
as of Nov 24, 2020.

<https://droughtmonitor.unl.edu>

