



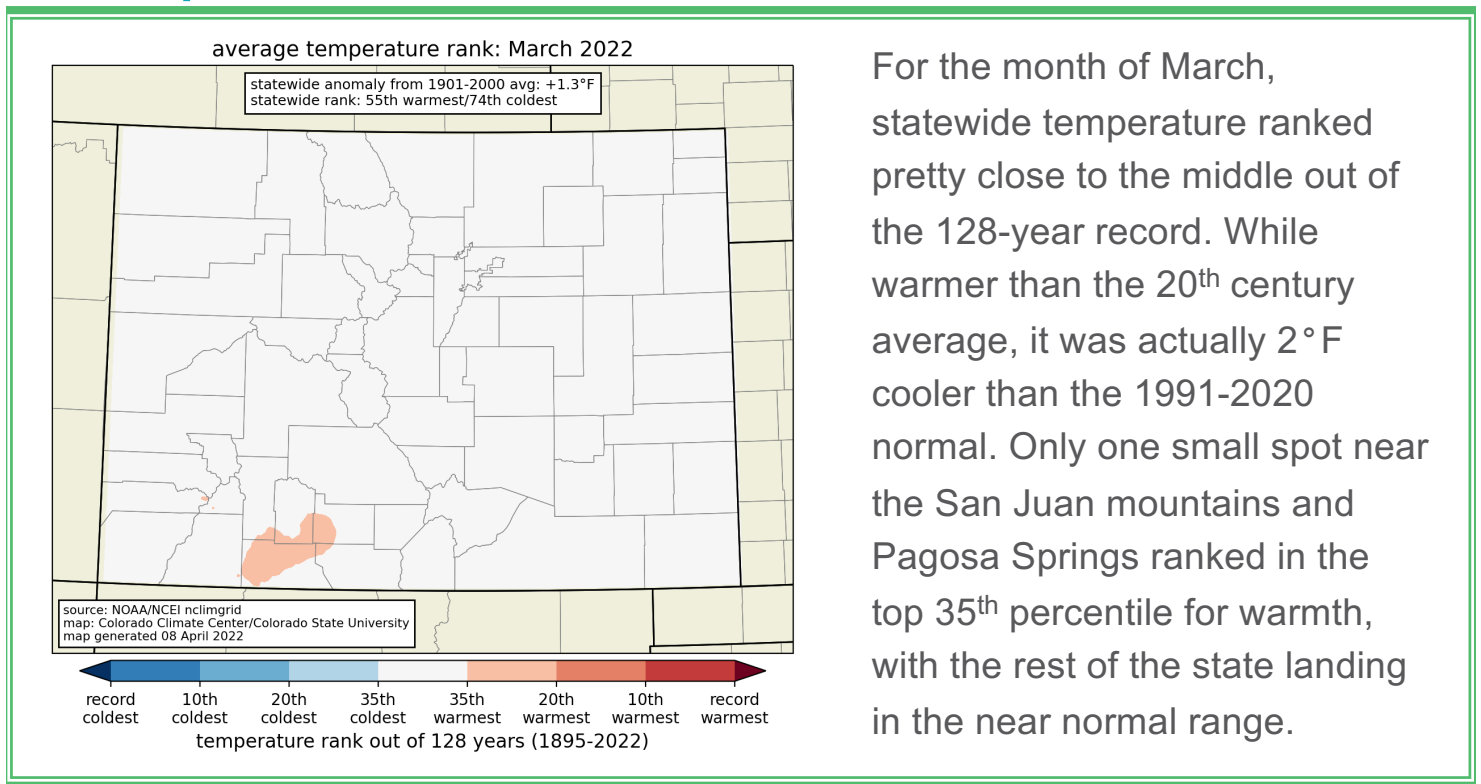
# March 2022 Colorado Monthly Climate Summary

---

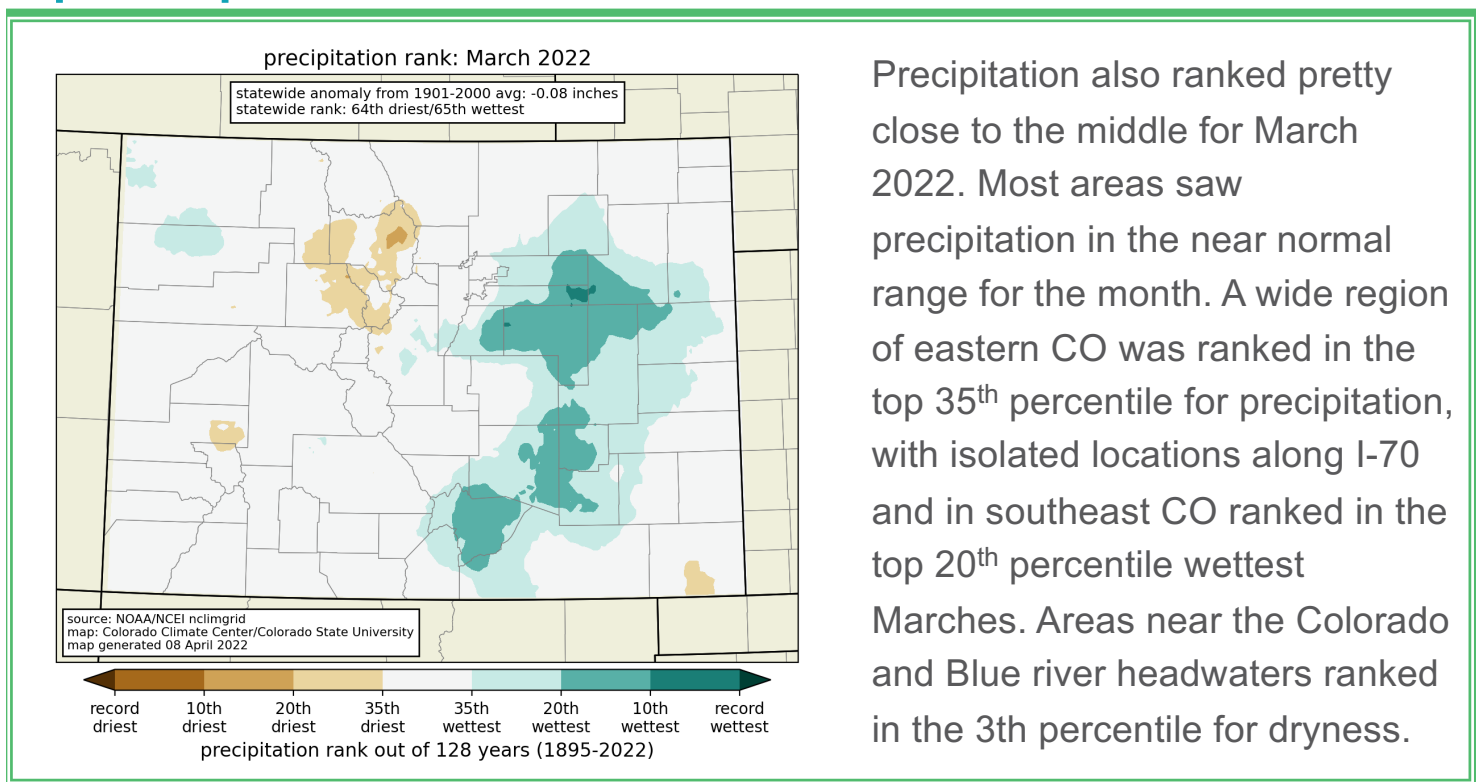


ATMOSPHERIC SCIENCE  
COLORADO STATE UNIVERSITY

# temperature



# precipitation



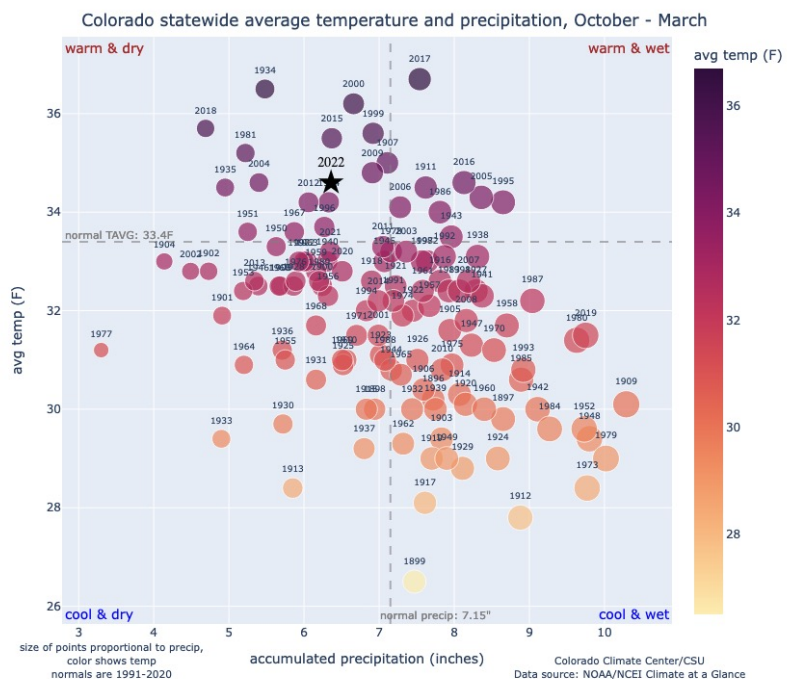
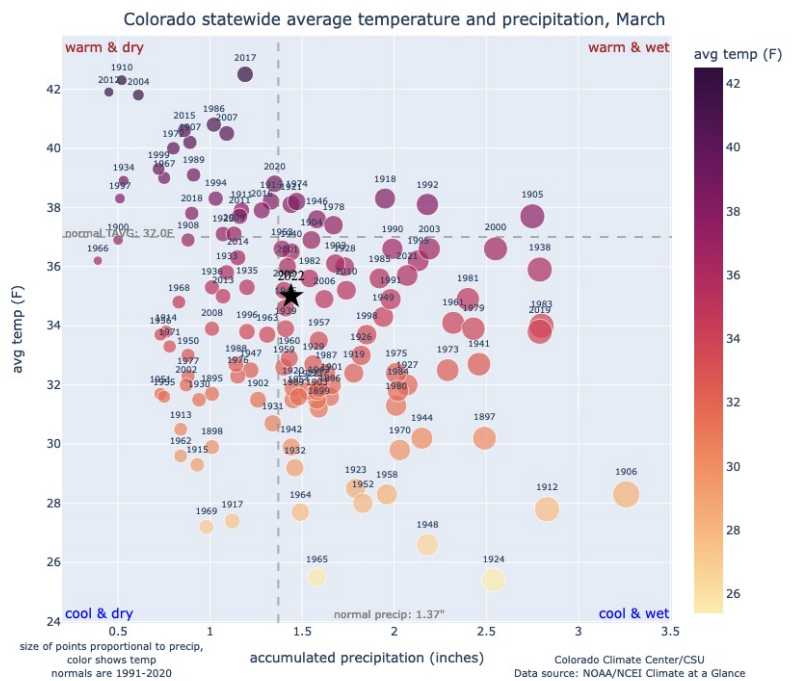
# quadrant charts

Each dot plots the precipitation on the x-axis and the temperature on the y-axis. Dots are colored based on temperature and size is based on precipitation. The current year is denoted with a star. Long-term averages are denoted by the dashed lines.

Statewide, March 2022 was very close to the long-term average for precipitation. For temperature, it fell in the "cool" quadrant with respect to the 1991-2020 average, but was still over a degree warmer than the 20th century average. This reflects the strong warming trend in March in recent decades.

At the halfway point of the water year, we still sit in the warm and dry quadrant. Water year 2022 so far is tied for the 10th warmest start to a water year, and has also been somewhat below average for precipitation statewide.

[view all quadrant charts](#)

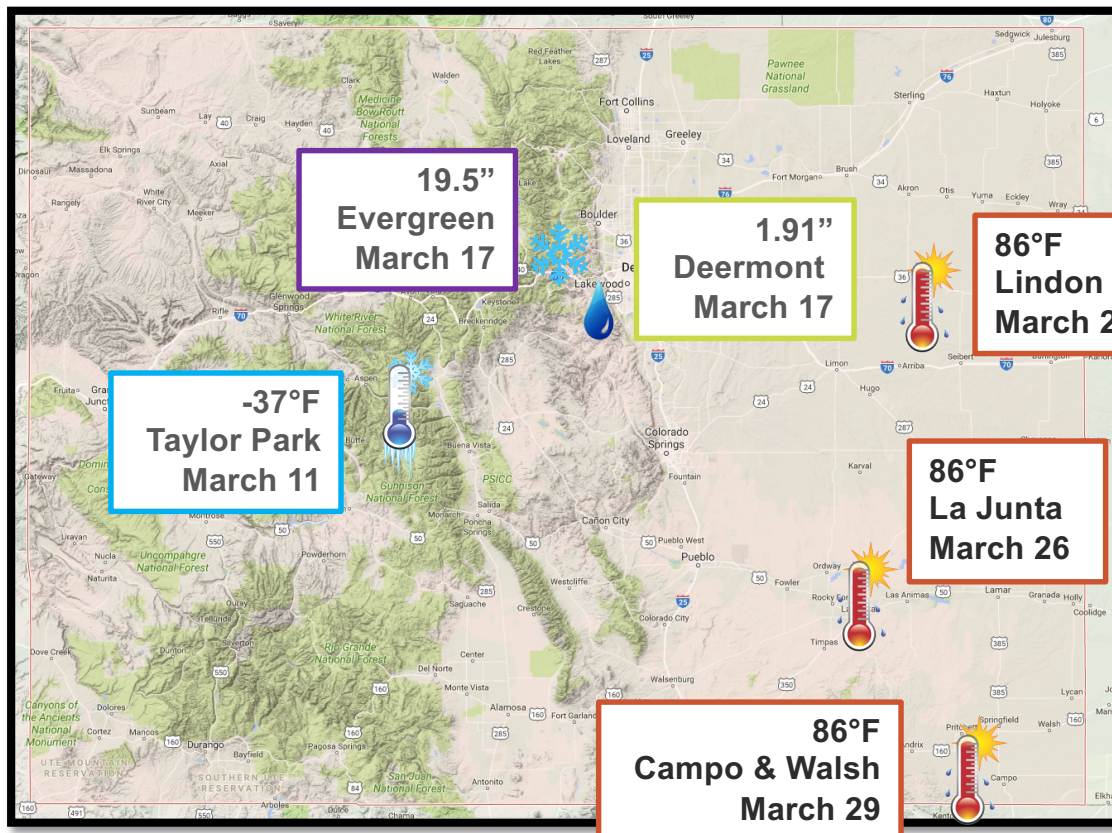


# records tied and broken

	High Max	Low Max	High Min	Low Min	Precip	Snow
Daily	59/252	23/318	23/158	27/263	25/81	9/45
Monthly	0/2	1/1	3/3	0/0	0/1	0/0
All-time	0/0	0/0	0/0	0/0	0/1	0/0

Tied/**Broken**, from NOAA National Centers for Environmental Information

# state extremes



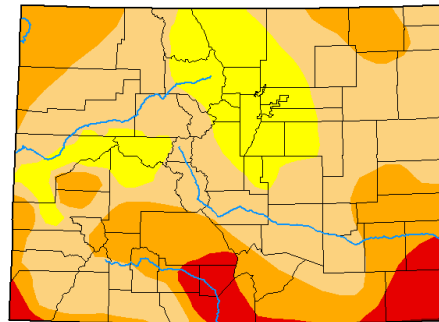
# drought

Widespread improvements were made across the Front Range and the Eastern Plains, thanks to above average precipitation in March. In Baca and Prowers counties, conditions were dry and D3 was expanded.

83% of the state remains in drought, and 7% is in extreme drought or worse (D3-D4).

## U.S. Drought Monitor Colorado

**March 29, 2022**  
(Released Thursday, Mar. 31, 2022)  
Valid 8 a.m. EDT



	Drought Conditions (Percent Area)					
	None	D0-D4	D1-D4	D2-D4	D3-D4	D4
Current	0.00	100.00	82.85	33.50	7.11	0.13
Last Week 03-22-2022	0.00	100.00	82.83	33.50	7.11	0.13
3 Months Ago 12-28-2021	0.00	100.00	100.00	67.27	22.21	0.00
Start of Calendar Year 01-01-2022	0.00	100.00	95.49	67.08	22.25	0.00
Start of Water Year 09-28-2021	12.72	87.28	46.42	26.30	15.05	3.91
One Year Ago 03-30-2021	0.00	100.00	92.31	61.69	32.13	14.65

**Intensity:**  
 None (White)      D2 Severe Drought (Orange)  
 D0 Abnormally Dry (Yellow)      D3 Extreme Drought (Red)  
 D1 Moderate Drought (Light Orange)      D4 Exceptional Drought (Dark Red)

The Drought Monitor focuses on broad-scale conditions. Local conditions may vary. For more information on the Drought Monitor, go to <https://droughtmonitor.unl.edu/About.aspx>

**Author:**  
Deborah Bathke  
National Drought Mitigation Center

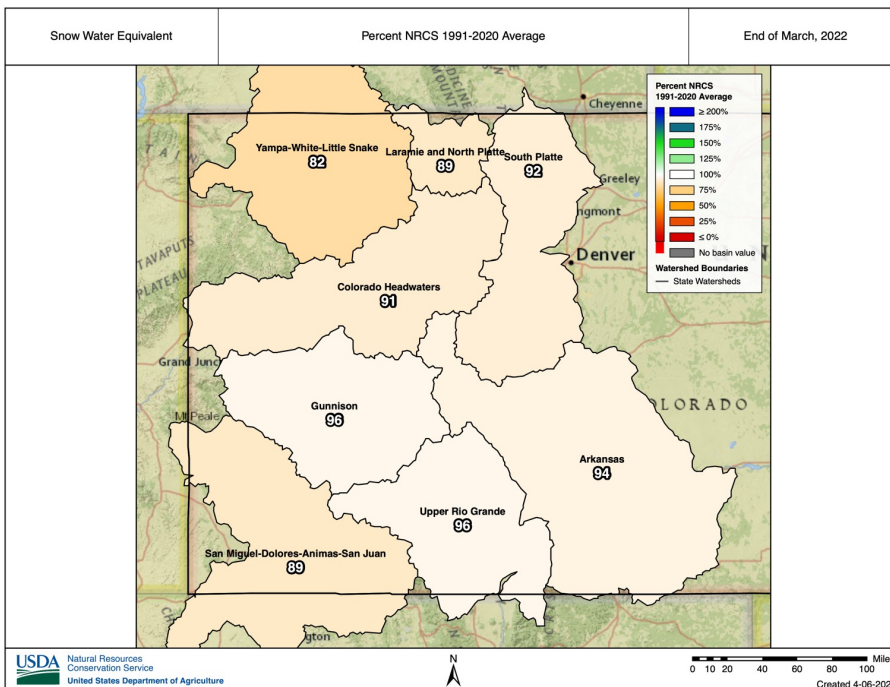


## [Colorado Drought Update Page](#)

# snowpack

Statewide snowpack was 92% of average at the end of March. Some melting had started at the end of March, but new snow fell after, so peak snowpack is still not known yet.

The Yampa-White basin continues to struggle, with just 82% of normal snowpack, while further south, the Gunnison is faring the best of all the basins.



# CCC in the news

- ❑ [Wildfire experts explain what kept the NCAR fire from reaching nearby homes](#)
  - Fox 31 Denver, March 28, Russ Schumacher
- ❑ [State climatologists, fire officials warn about potential fire danger along Colorado urban corridor](#)
  - The Denver Channel, March 28, Becky Bolinger
- ❑ [Why the worse drought in 1200 years happened... and will get worse](#)
  - Yale Climate Connections, March 23, Becky Bolinger
- ❑ [Colorado isn't getting enough snow to fully recover drought-stricken rivers and reservoirs](#)
  - The Denver Post, March 10, Becky Bolinger
- ❑ [Changing snowfall makes it harder to fight fire with fire](#)
  - The Associated Press, March 9, Becky Bolinger
- ❑ [Colorado needs more than 100% snowpack thanks to drought. March and April are critical months.](#)
  - The Coloradoan, March 4, Russ Schumacher
- ❑ [UN Climate Report spells out potential impacts for Colorado](#)
  - KRDO Colorado Springs, March 1, Peter Goble