

Participatory Mapping – Field seasons 2012/2013

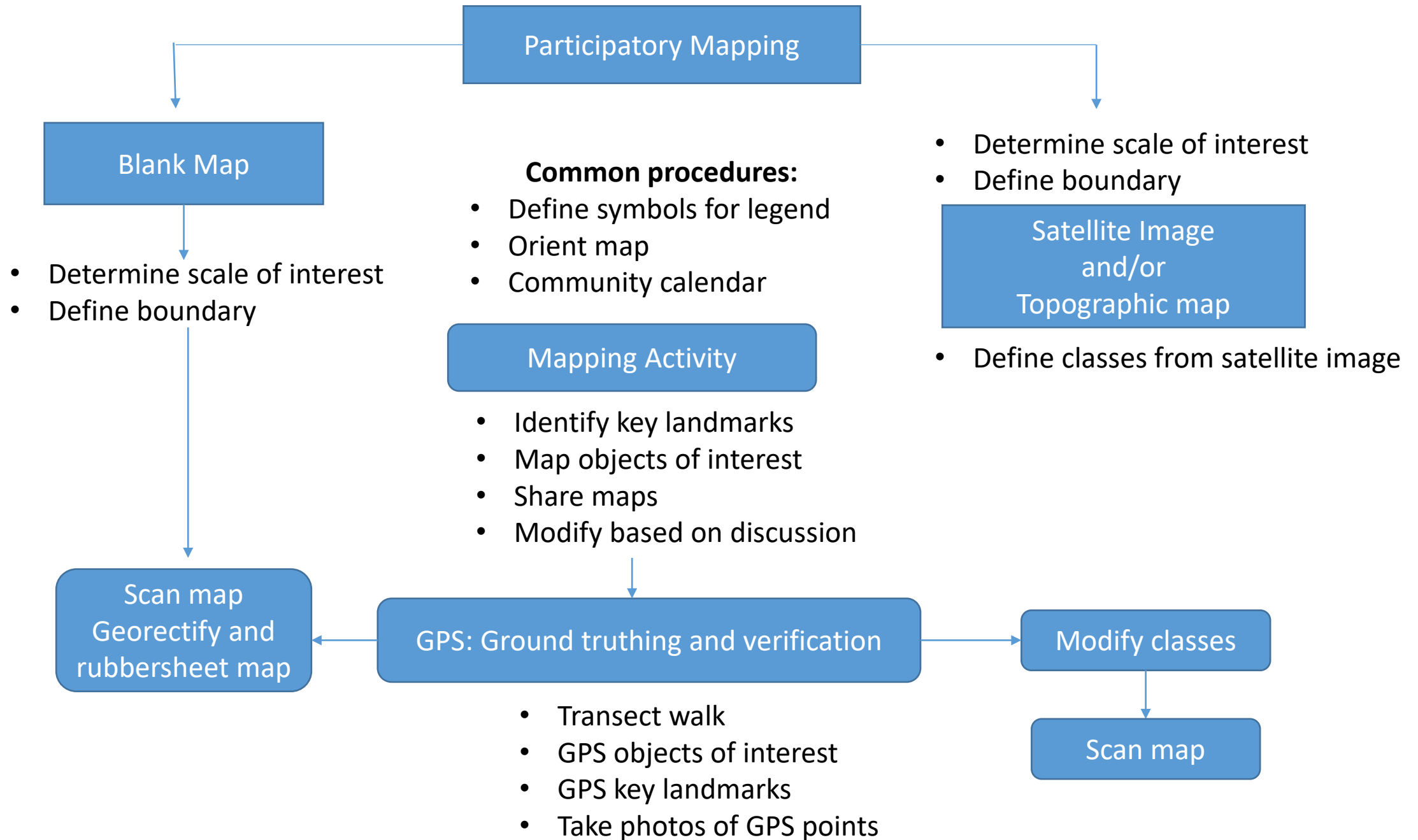
- Process
- Mapping of
 - Herder seasonal camps
 - Travel routes
 - Pastures
- Sketch maps

Proposed sequence

- Establish initial contacts and build rapport with communities.
 - Discuss mapping activity and jointly define purpose
- Determine the scale of interest
 - Village, Landscape, Region
 - Define boundary
- Familiarise with the community surroundings.
 - Identify key resources as defined by community
- Identify community support structures.
 - Work with Local leaders
- Develop and understand community relationships.
 - Identify stakeholders
 - Determine groups: men, women, youth, elders, by employment, education
- Permission and informed consent
 - Sharing data, information, knowledge
 - Integrating local knowledge with other types of data/information
 - Taking photographs that will be shared in other venues
- Prepare communities for feedback and sharing.
- Use participatory mapping findings.

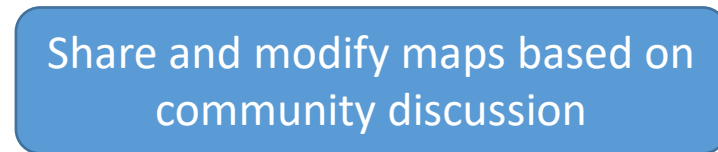
Idealized Proposed sequence- AMA

- Develop and understand community relationships.
 - **Identify** stakeholders
 - Determine groups: men, women, youth, elders, by employment, education
- Establish initial contacts and build rapport with communities.
 - Discuss *proposed* mapping activity and jointly define purpose
- Permission and informed consent
 - Sharing data, information, knowledge
 - Integrating local knowledge with other types of data/information
 - Taking photographs that will be shared in other venues
- Determine or co-determine the scale of interest
 - Village, Landscape, Region
 - Define boundary
- Familiarise with the community surroundings.
 - Identify key resources as defined by community
- Identify community support structures.
 - Work with Local leaders
- Prepare communities for feedback and sharing.
- Use participatory mapping findings.

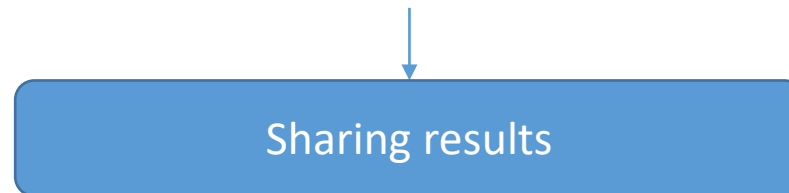




- Code maps based on surveys, discussions, legends while mapping
- Overlay with other geospatial data
- Link photos to GPS site on map
- Create database with metadata



- Discuss and develop attribute data
- Validate and verify with community
- Determine what further analysis to conduct
- Determine what other maps to create



Stewardship of database
Maintenance and update

The blank sheet of paper
for sketch mapping





Sketch mapping and discussion

Sketch map

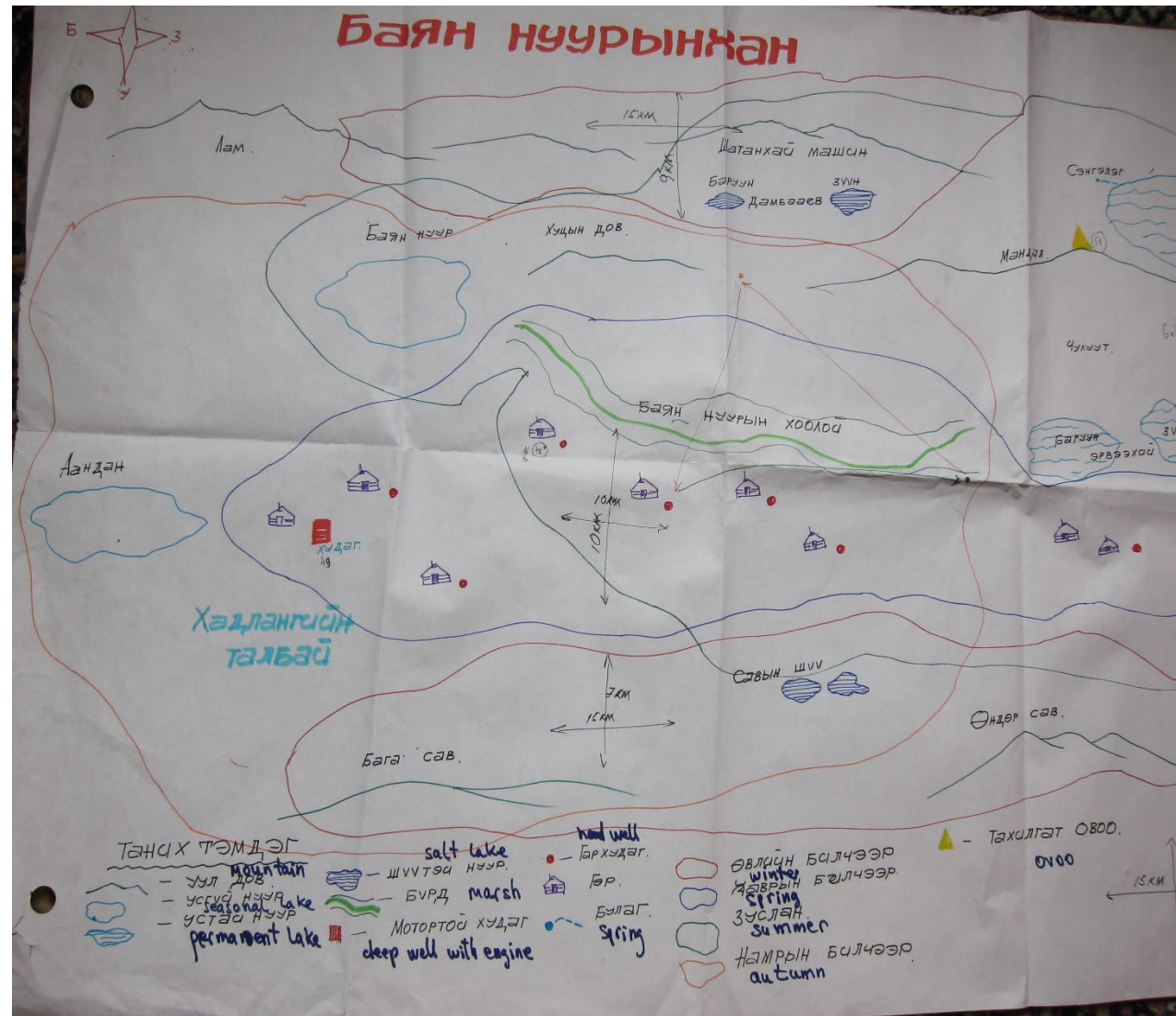
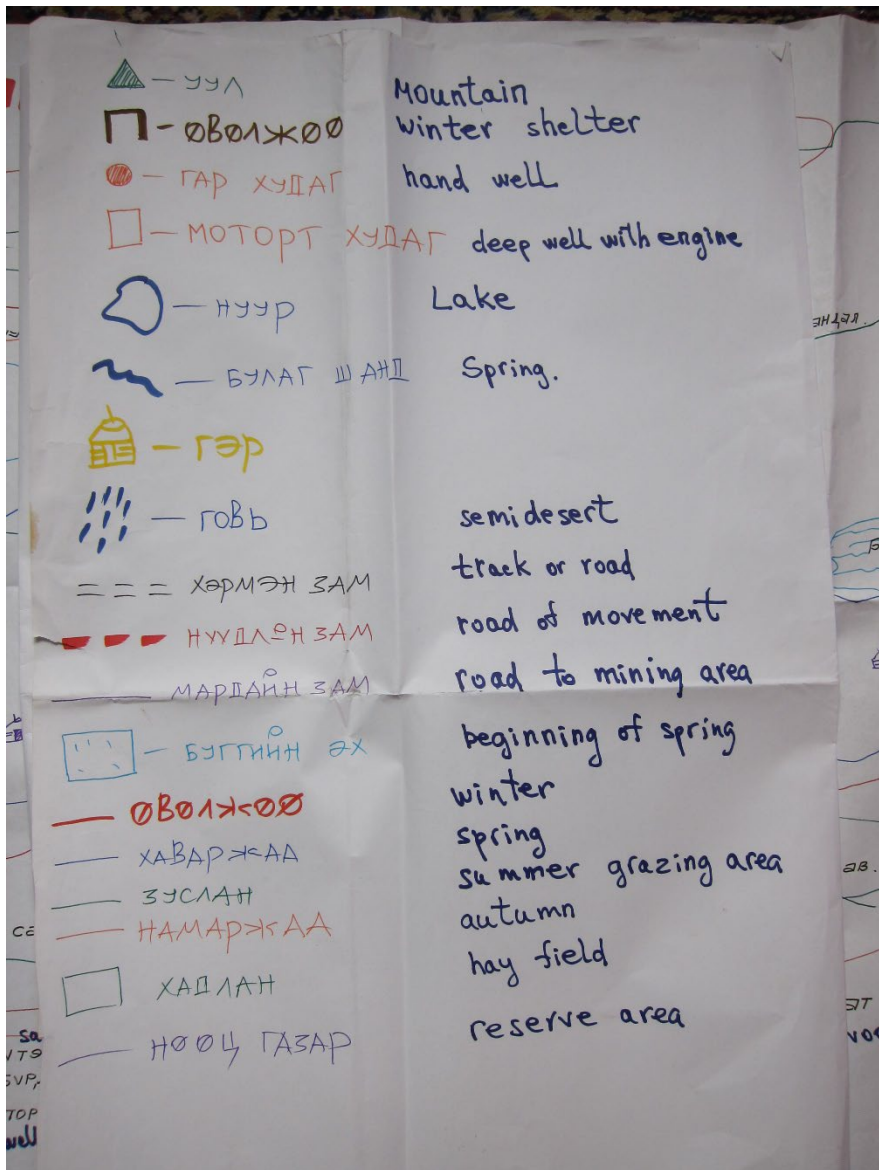


Discussions with
Soum officials about
pasture lands and sketch
maps



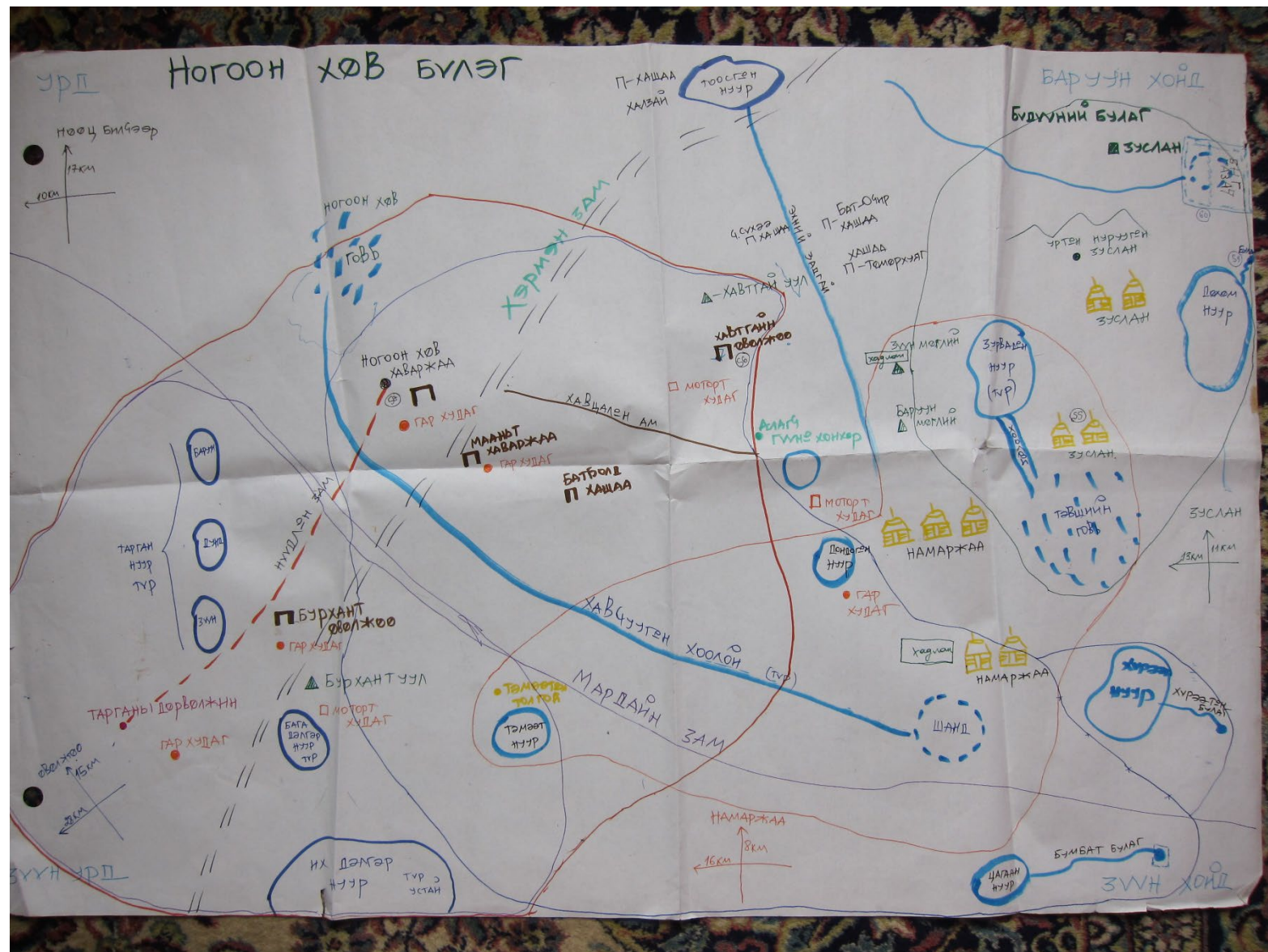


Tsagan Ovoo soum



Translation - legend

Sergelen soum



Altanshiree Soum

