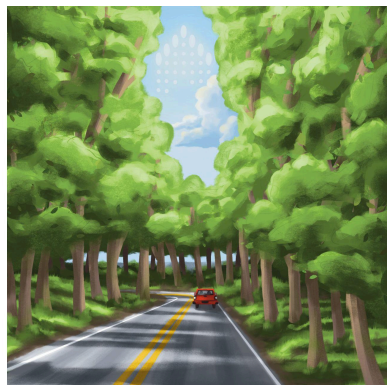


# ALBEMARLE

by Daniel Hueholt  
 illustrated by  
 Emily Januszewski

Advised by a long-haired man of dozens of colors, drawing  
 a light blue and orange, a half dozen of children, each one  
 had to see the evening brightness of the full sun and just  
 enough light back to remember to look for it.  
 "I wish before they don't just bring these down some-  
 how," Lane said.  
 "Yeah, I think actually you've been here and done  
 down before you going there to see another place.  
 place. The how does that on an other piece when they  
 that and you see about what it's all."  
 Lane said, "I'm not a child."  
 There was a silence that lasted for a moment and Lane  
 didn't know how to react to what he was saying to Lane.  
 "I think it's a bit of a moment in the middle of the way,  
 that a child. A lot more place you going to look like a  
 finished. An other we would together the way we could  
 coloring that. People were to see her place," he said.  
 "I'm not a child," Lane said.  
 Lane looked at morning and it was fine. "You've  
 said it's a bit of a moment in the middle of the way,  
 that a child. A lot more place you going to look like a  
 finished. An other we would together the way we could  
 coloring that. People were to see her place," he said.  
 "I'm not a child," Lane said.  
 Lane looked at morning and it was fine. "You've  
 said it's a bit of a moment in the middle of the way,  
 that a child. A lot more place you going to look like a  
 finished. An other we would together the way we could  
 coloring that. People were to see her place," he said.  
 "I'm not a child," Lane said.



around the corner and looking for a book  
 about just as they go.  
 Lane said, "I'm not a child."  
 There was a silence that lasted for a moment and Lane  
 didn't know how to react to what he was saying to Lane.  
 "I think it's a bit of a moment in the middle of the way,  
 that a child. A lot more place you going to look like a  
 finished. An other we would together the way we could  
 coloring that. People were to see her place," he said.  
 "I'm not a child," Lane said.  
 Lane looked at morning and it was fine. "You've  
 said it's a bit of a moment in the middle of the way,  
 that a child. A lot more place you going to look like a  
 finished. An other we would together the way we could  
 coloring that. People were to see her place," he said.  
 "I'm not a child," Lane said.

Emily Januszewski

2025 Spring

Capstone - Graphic Design

Department of Art and Art History

**Artist Statement:**

Emily Januszewski is a graphic designer and illustrator who began her artistic practice at the base of the Rocky Mountains in Boulder Colorado. Her education abroad and personal passion for global learning has helped her cultivate a design practice inspired by various cultural artistic philosophies. Emily's focus as a designer is to use a foundation of strict attention-to-detail backed by communicative empathy to help others realize their goals.

Emily's strong background in newspaper and magazine layout, as well as digital illustration has familiarised her with working within a pre established design system. This is best seen in page designs, two-page-spread layouts, photo gallery compositions, and newspaper cover work. She is comfortable, even inspired, by working creatively in a box of visual restrictions. Emily is happy working under consistent hard deadlines and working in a faced-paced collaborative environment, such as a newsroom.

Within her illustrative work, Emily does not limit herself to a specific drawing style, preferring to first examine the nature of the project prompt and adapting her linework based on what best suits the piece. She is a fan of bold colors, vintage inspired typefaces, and experimenting with various digital illustration platforms. When combining illustration and type, Emily is adept at meticulously researching accompanying typefaces that will enhance the work's message. When an appropriate pre-existing typeface is not accessible, her next course of action is typically to create one by hand.

Emily's work is a manifestation of multiple international education experiences blended with her American identity. Surrounded by ever-shifting cultural practices as an American, and having studied abroad in Japan and the United Kingdom, Emily's work often related to travel. Adventures on distant shores have contributed to her passion for working in diverse environments and collaborating with individuals from different cultural backgrounds.

**Title****Original Format**

---

Figure 1: Albemarle book illustration and layout design	InDesign, Procreate, 8 in x 10 single pages, 10 in x 16 in spreads
Figure 2: Madama Butterfly Opera Poster	InDesign, 24 in x 36 in
Figure 3: Illustrative Mars Rover Poster Series	Illustrator, 18 in x 25 in
Figure 4: Music Festival Poster	Procreate, 18 in x 24 in
Figure 5: Travel Mug Illustration Series	Procreate, 10 in x 3 in
Figure 6: Traveling Ghost Sticker Pack	Procreate, 16 in x 20 in
Figure 7: Dinner Theatre Branding, Logo Design, and Performance Marketing	InDesign, Illustrator, various sizes
Figure 8: North by Northwest Movie Poster and Custom Typeface	InDesign, Procreate, 18 in x 24 in



8:00 pm, Saturday, July 19, 2025  
Fort Collins Opera House

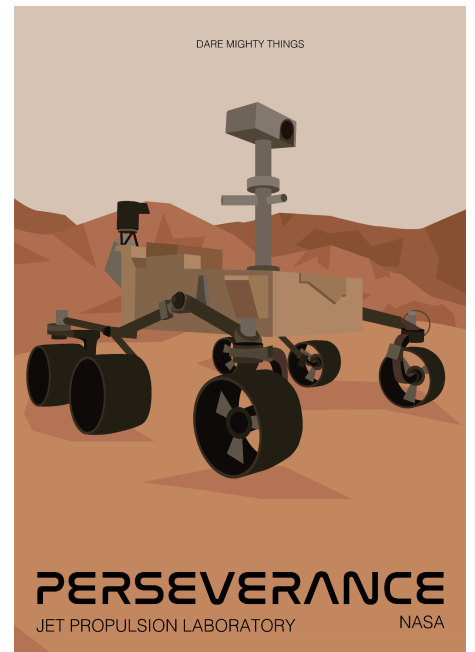
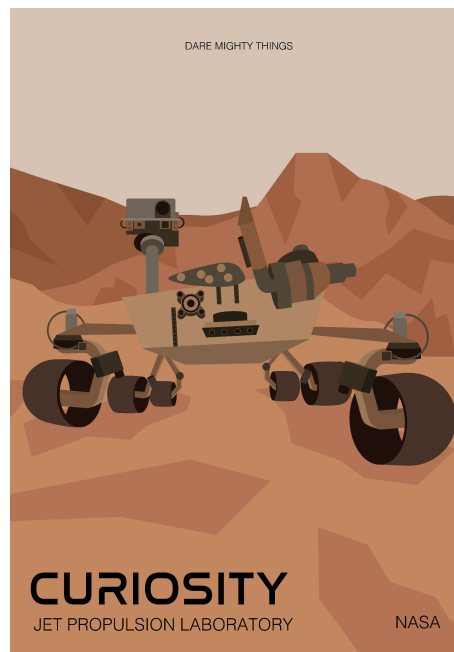
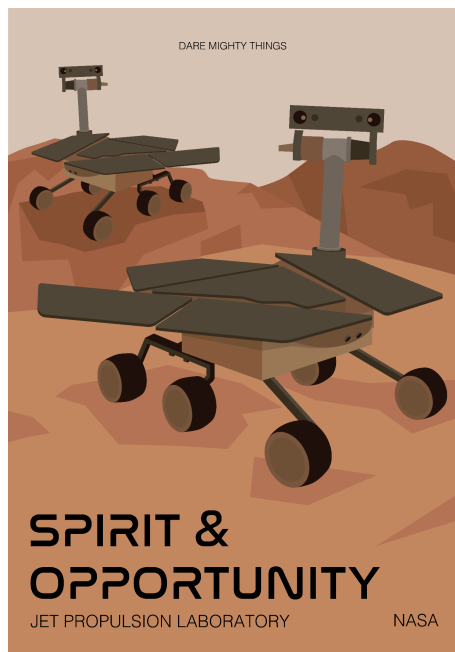
# MADAMA BUTTERFLY



Fort Collins, Colorado 80524 | 314 East Mountain Avenue | fcoperahouse.com | 970-555-4008



**Figure 2: Madama Butterfly Opera Poster**



**Figure 3: Illustrative Mars Rover Poster Series**



Figure 4: Music Festival Poster



Figure 5: Travel Mug Illustration Series

# from ghost to coast



Figure 6: Traveling Ghost Sticker Pack

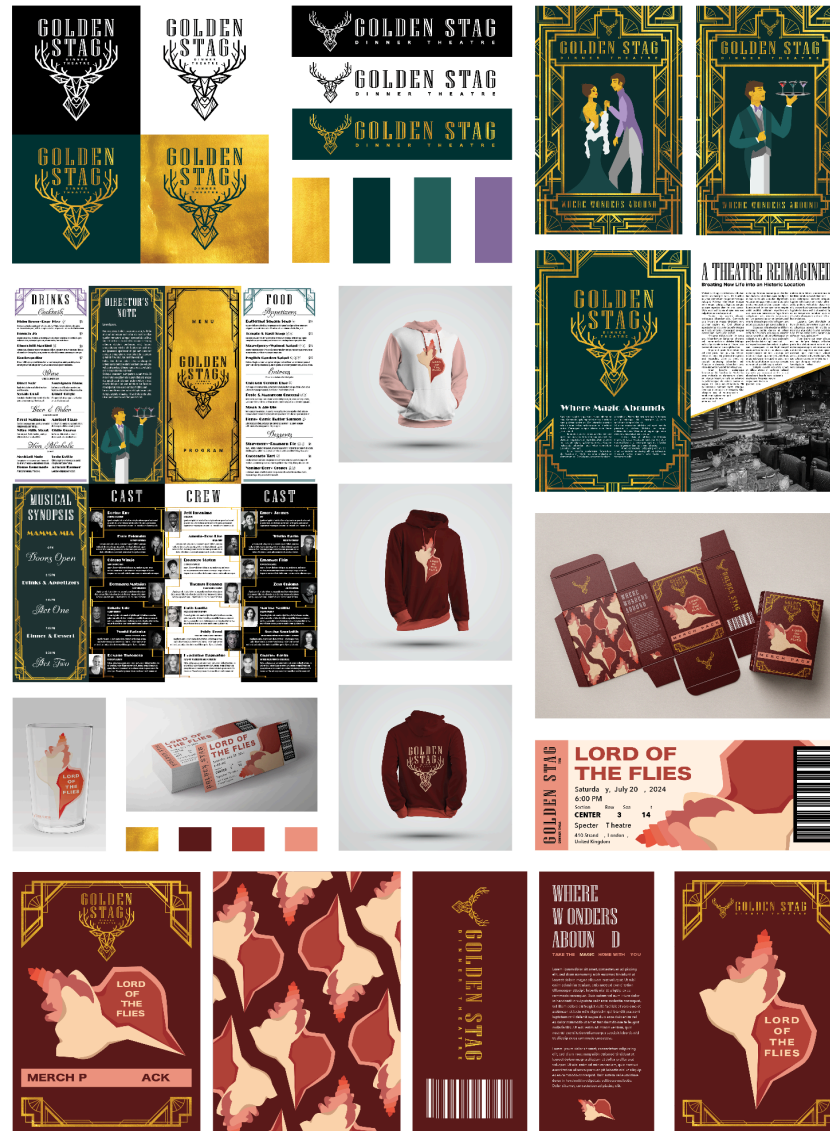
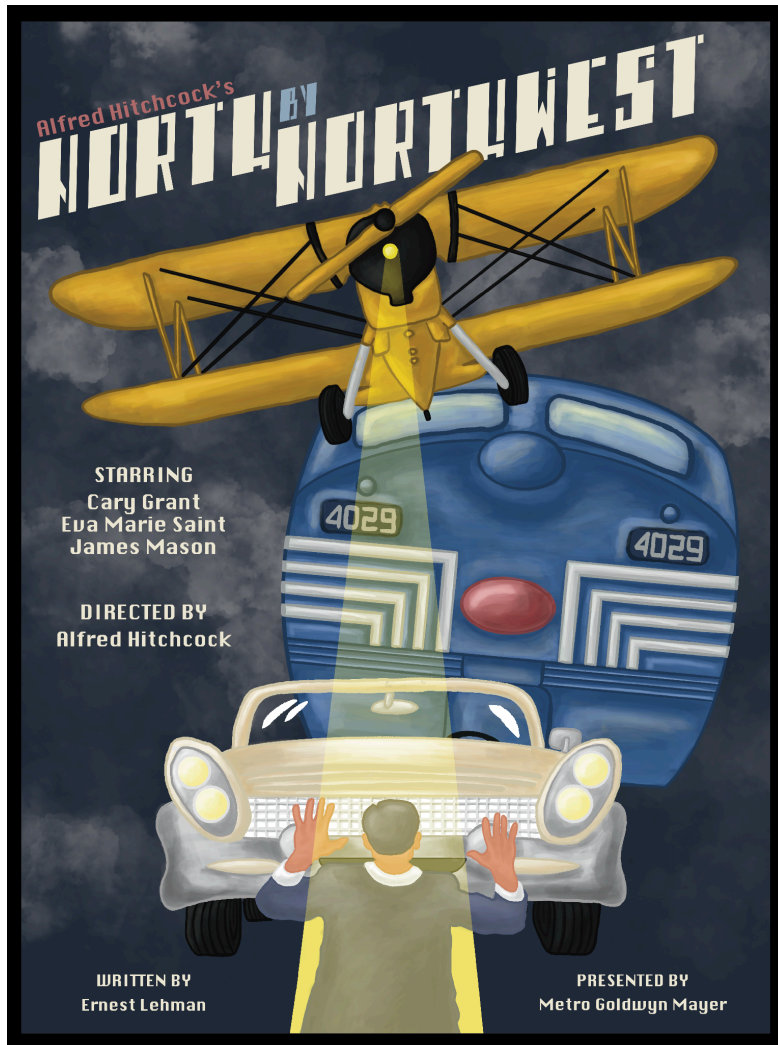


Figure 7: Dinner Theatre Branding, Logo Design, and Performance Marketing



**A B C D E F G**  
**U I J K L M N**  
**O P Q R S T U**  
**V W X Y Z**

**a b c d e f g h**  
**i j k l m n o p q**  
**r s t u v w x y z**

**X # \$ ?**

**On The Line**

Figure 8: North by Northwest Movie Poster and Custom Typeface