

THESIS

ALUMINUM SCULPTURE: ASSEMBLAGE COMPOSITIONS
IN FULL MOLD SAND CASTING

Submitted by
Dennis Lee Stroh
Art Department

In partial fulfillment of the requirements
for the Degree of Master of Fine Arts
Colorado State University
Spring, 1979

COLORADO STATE UNIVERSITY

Spring 1979

WE HEREBY RECOMMEND THAT THE THESIS PREPARED UNDER OUR SUPERVISION

BY Dennis Lee Stroh

ENTITLED ALUMINUM SCULPTURE: ASSEMBLAGE COMPOSITIONS

IN FULL MOLD SAND CASTING

BE ACCEPTED AS FULFILLING IN PART REQUIREMENTS FOR THE DEGREE OF

Master of Fine Arts

Committee on Graduate Work

Wm. W. W. W.
William A. McBride
Harold J. Wassell
John C. Burns
Adviser

ABSTRACT OF THESIS
ALUMINUM SCULPTURE: ASSEMBLAGE COMPOSITIONS
IN FULL MOLD SAND CASTING

These works attempt to convey visual situations that are disquieting in their exploration of space, visually unstable through apparent tenuous balance, or fragile in quality. The aspects of potential change and fragility are in contrast to the feeling that cast metal is stable and structural.

These pieces explore the relationships of frameworks placed one in front of another to achieve simultaneous viewing of several parts of the piece. This situation invites the viewer to participate in the piece, to walk around it, and experience the change in shapes and their visual relationship to one another.

The parts of these works are a result of selection and shaping of rigid polystyrene packing materials. The assembled whole is a result of intuitive interaction between artist and shapes. The pieces, thus, are predetermined as to shape and shape relationships; however, the casting process, through warpage and surface distortion, can change the end result. The surface and shape changes that occur promote a feeling of rawness which is accepted or promoted by the finish. The finish also enforces the idea of parts and their relationships. The final sculpture, due to the manner by which the shapes

were determined and the changes that occur because of the casting process, is affected, at least to some degree, by chance.

Dennis Lee Stroh
Art Department
Colorado State University
Spring, 1979

To my wife Susan, without whom this would not have been possible.

TABLE OF CONTENTS

DOCUMENTATION.....	1
APPENDIX	
PATINAS.....	24
THESIS PROPOSAL.....	26

DOCUMENTATION

Fig. 1. Number Seven, Full mold sand cast aluminum,
44" x 35" x 32".

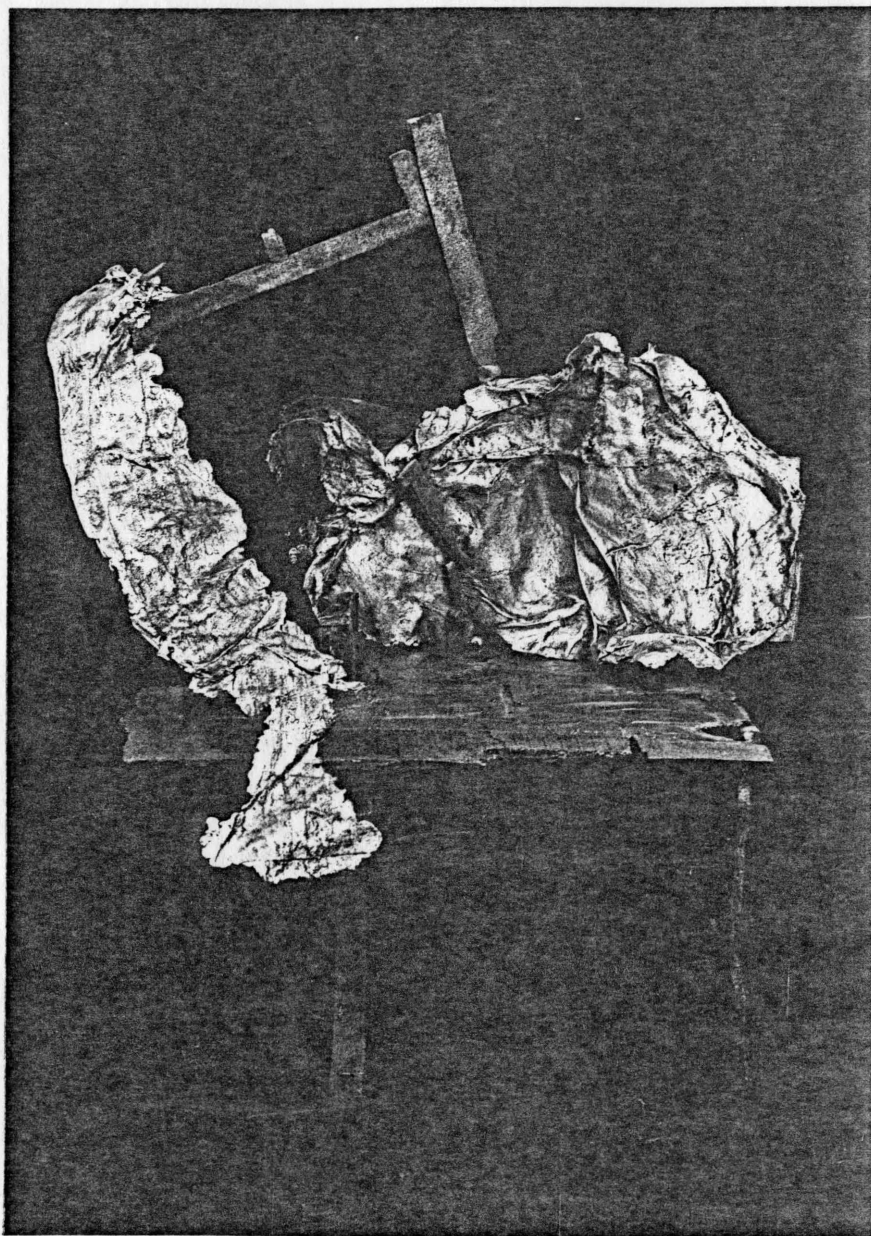


Fig. 2. ...eat Repeat Rep..., Full mold sand cast aluminum,
49" x 40" x 13".

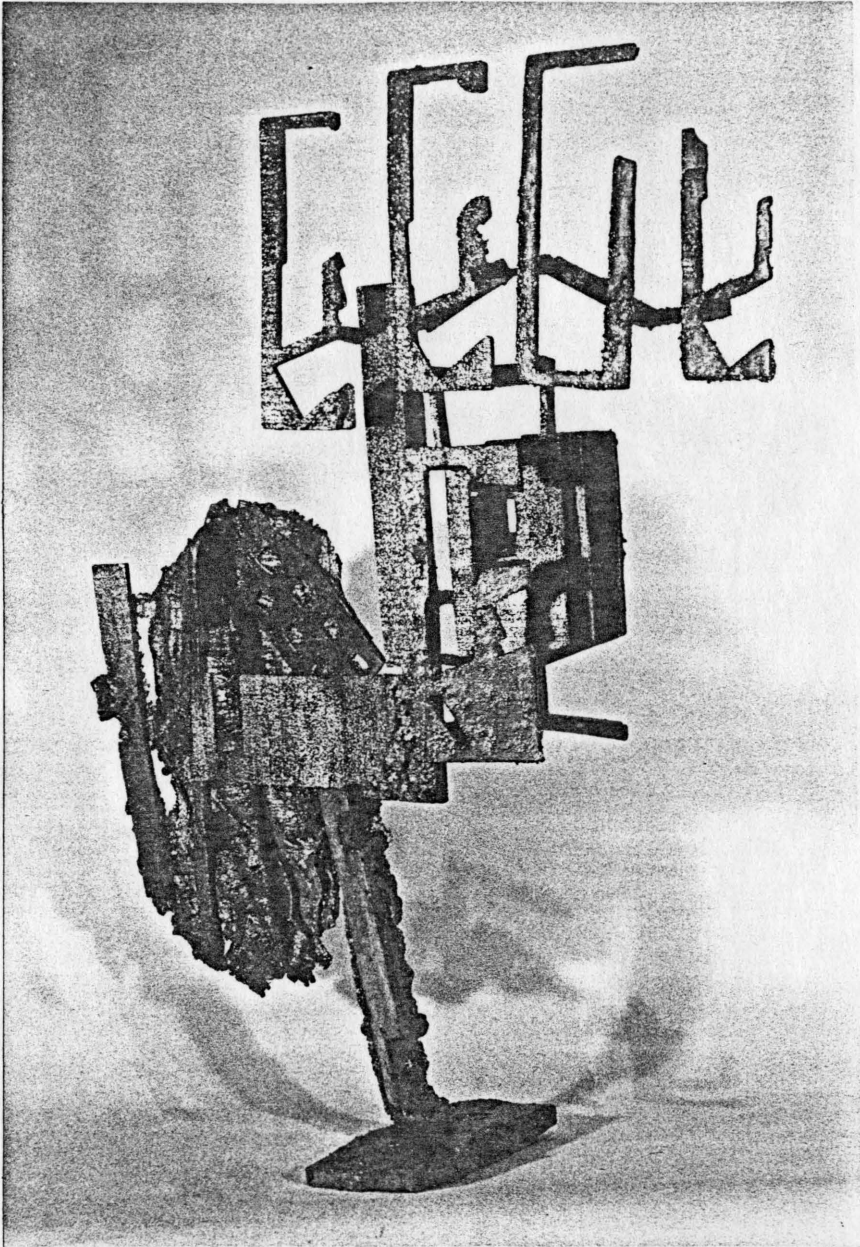


Fig. 3. A Dream, Full mold sand cast aluminum, 50" x 48" x 38".

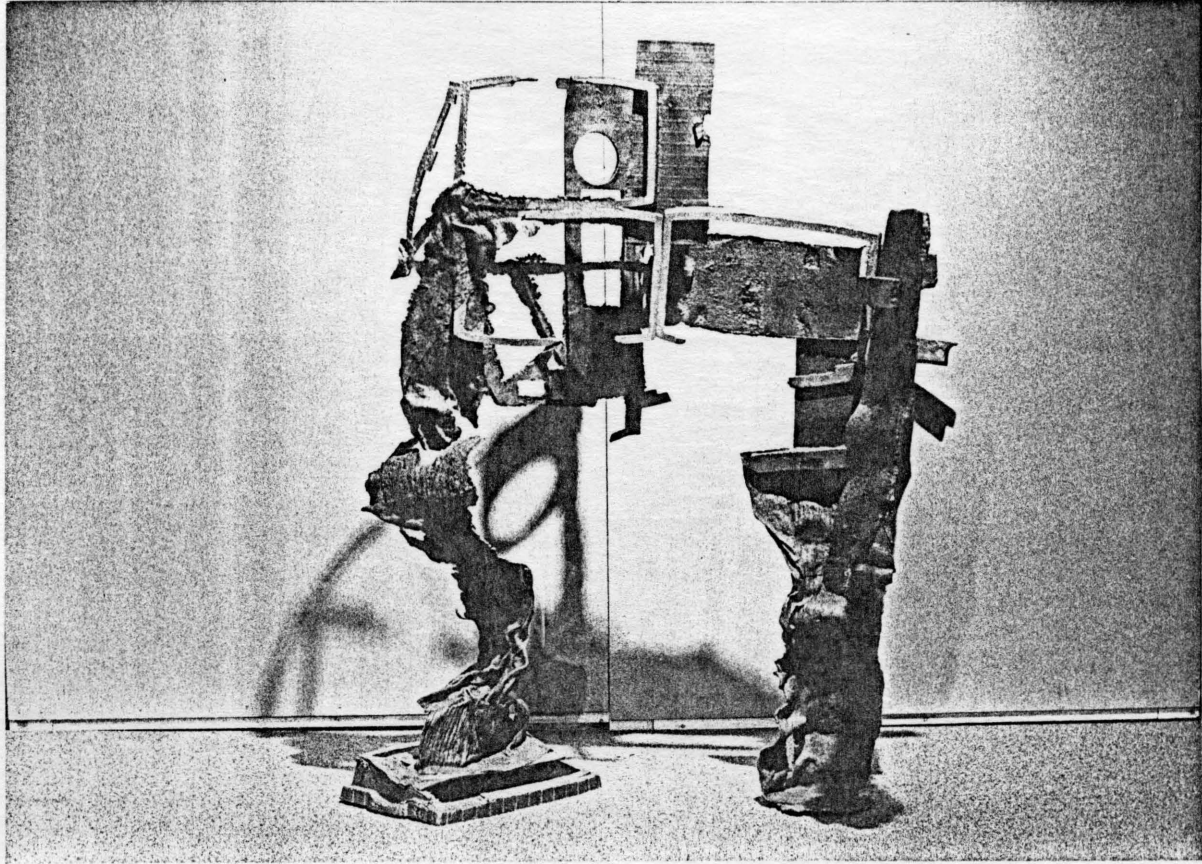


Fig. 4. Composition In Yellow, Full mold sand cast aluminum, 34" x 44" x 25".

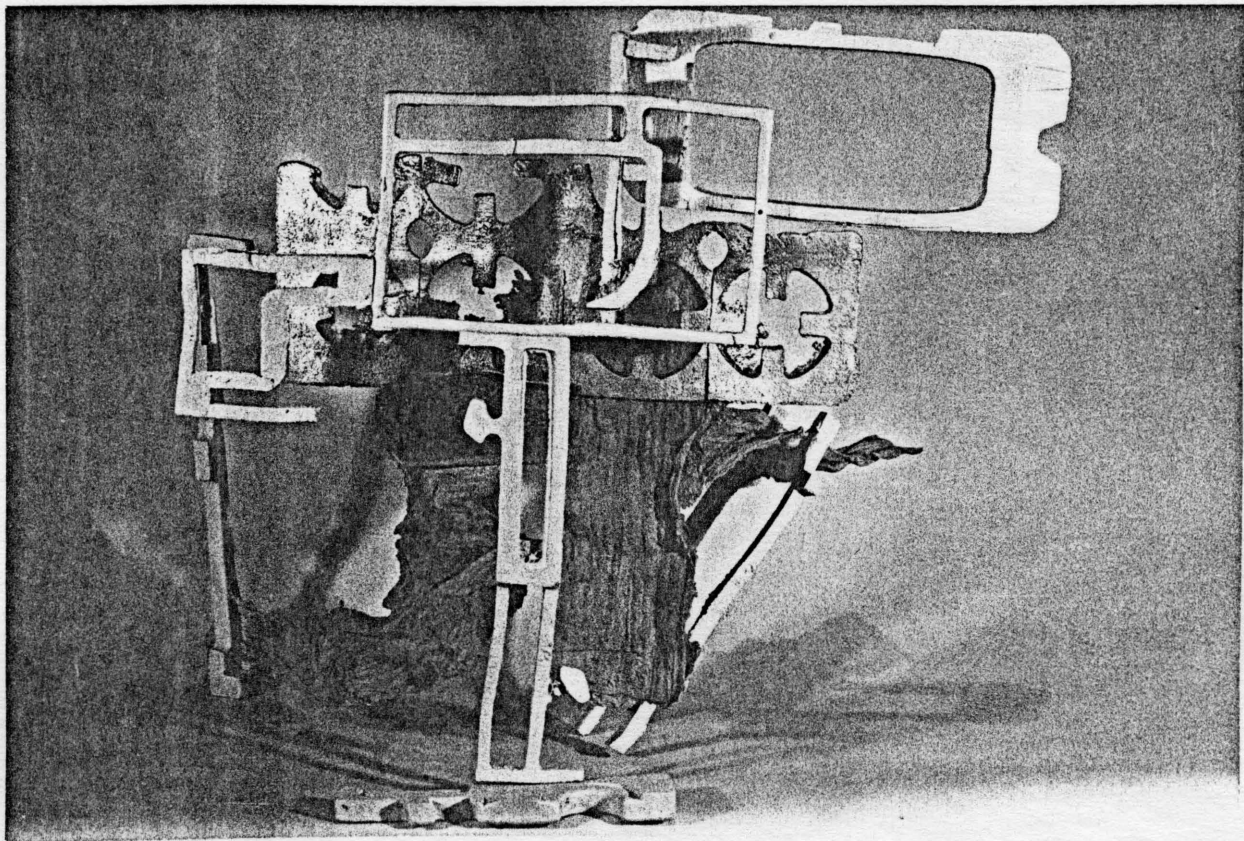


Fig. 5. This Side Up, Full mold sand cast aluminum,
48" x 28" x 20".

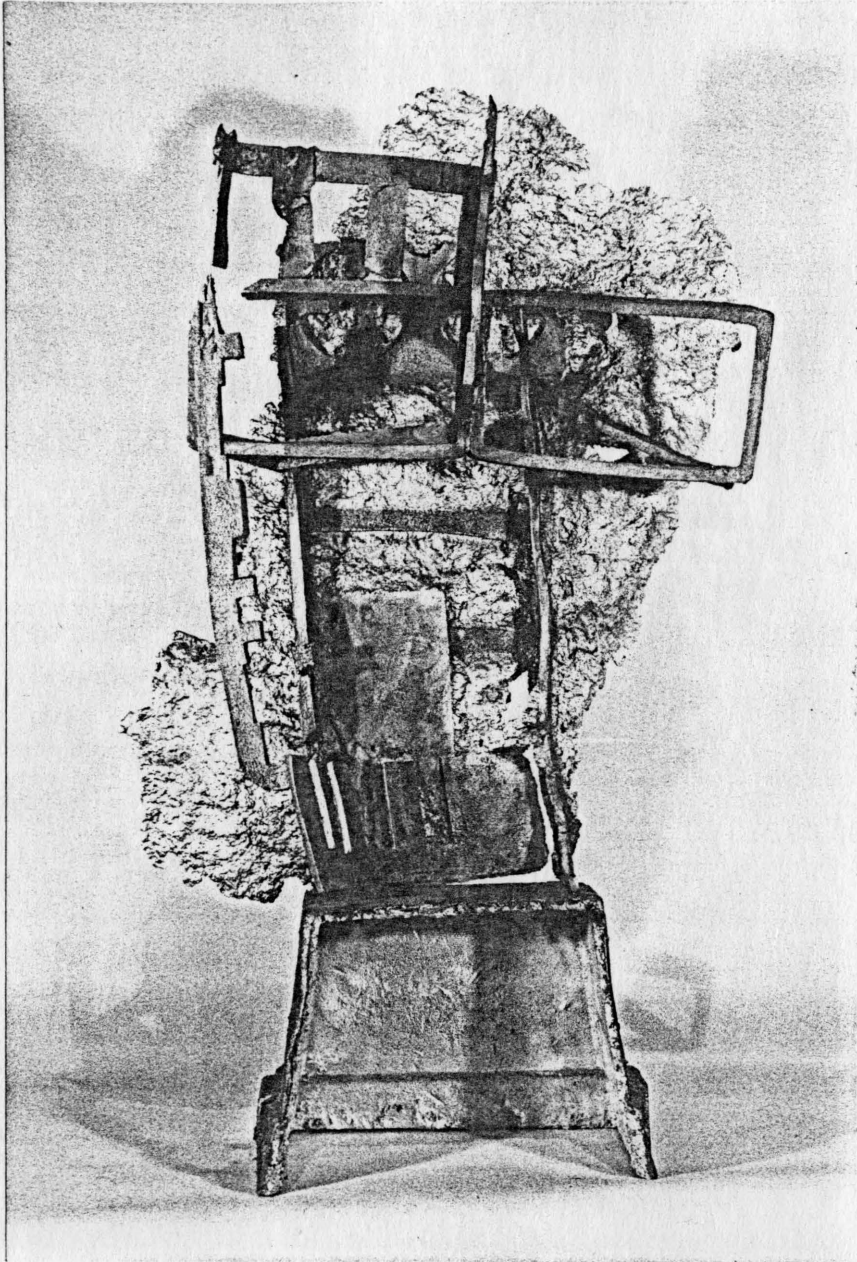


Fig. 6. Dr. B., Full mold sand cast aluminum,
40" x 26" x 11".

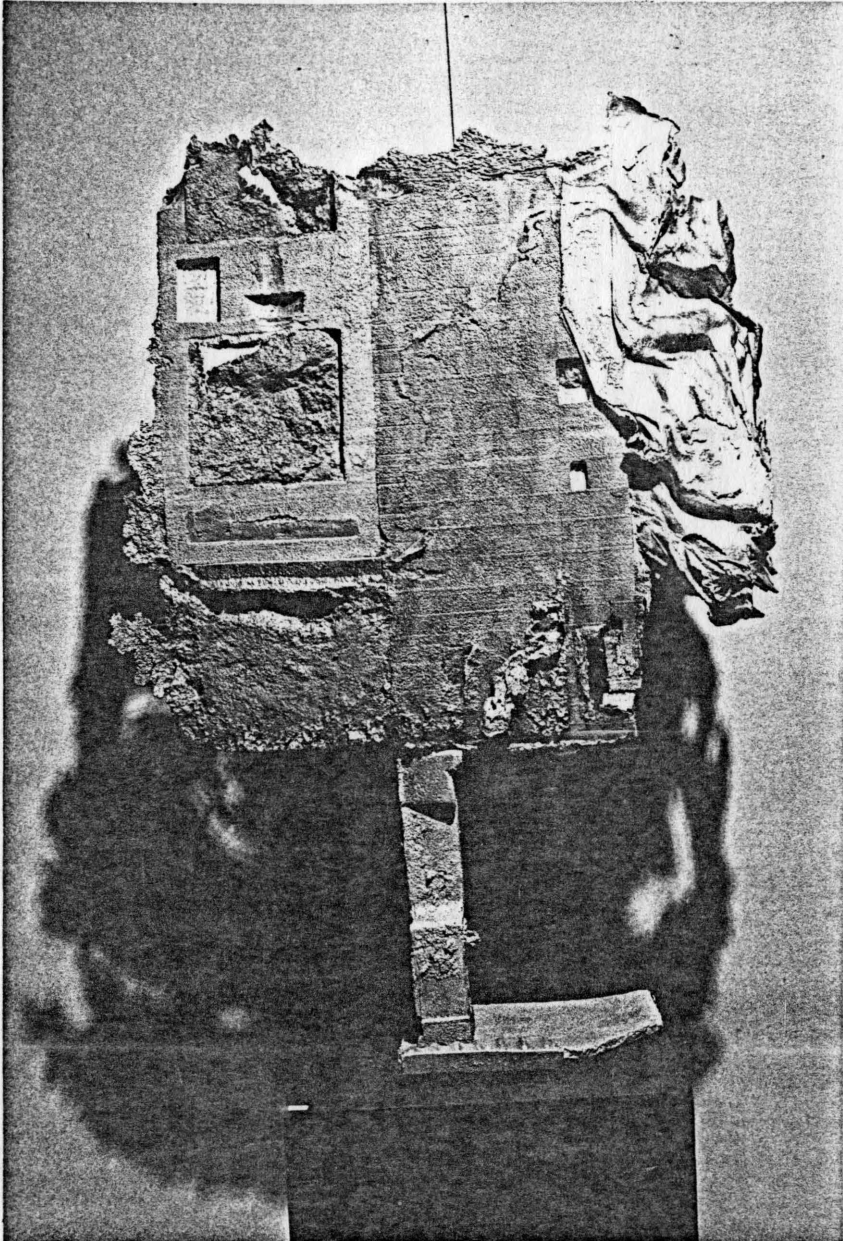


Fig. 7. Ill Wind, Full mold sand cast aluminum, 30" x 35" x 35".

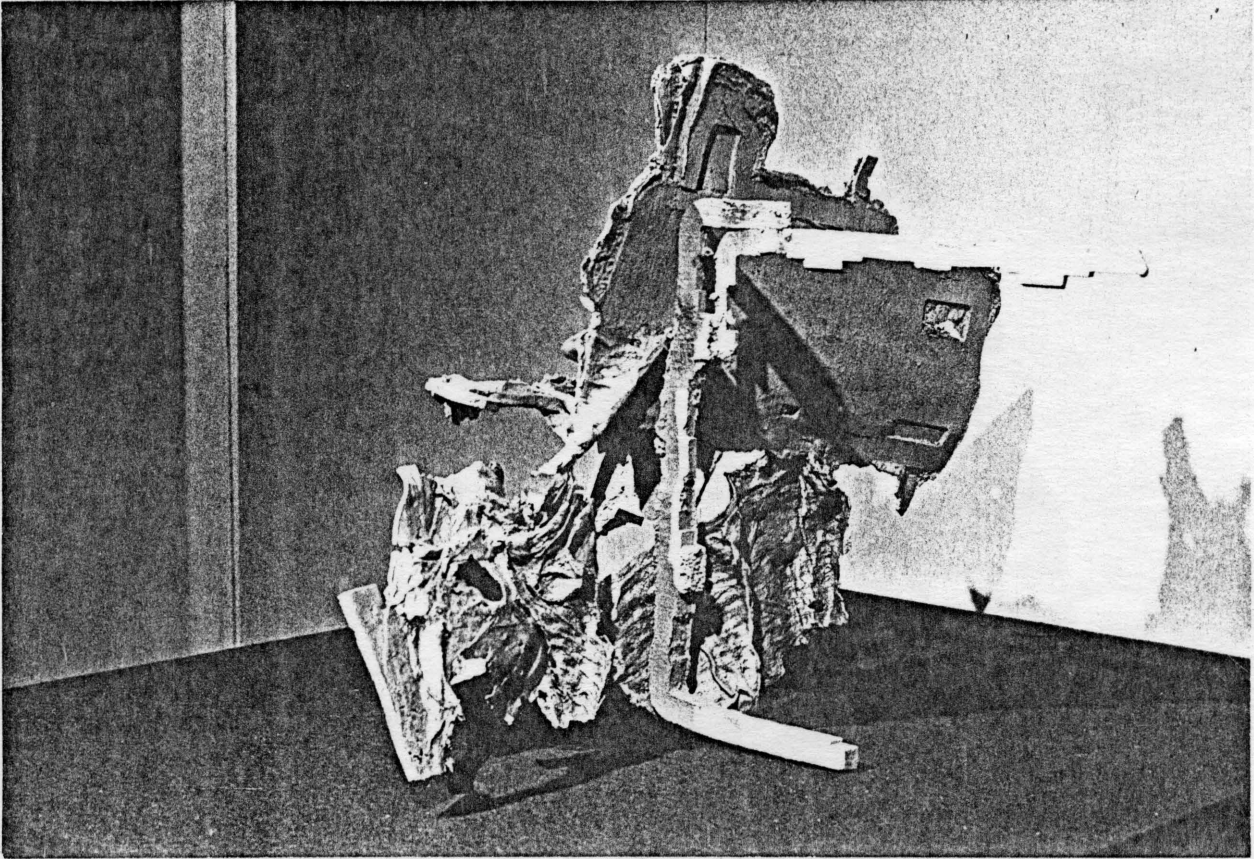


Fig. 8. Another Composition, Full mold sand cast aluminum,
31" x 28" x 21".

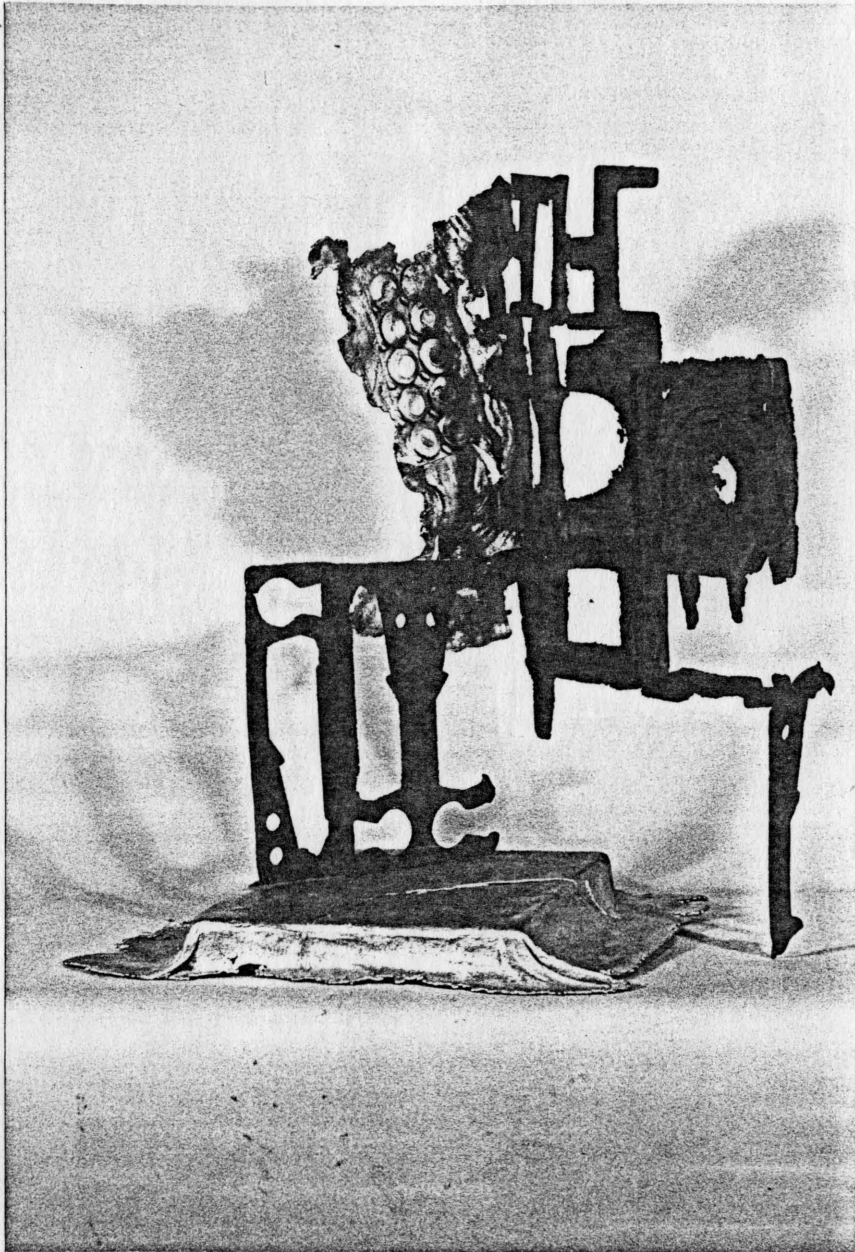


Fig. 9. Superman, Full mold sand cast aluminum,
38" x 30" x 20".

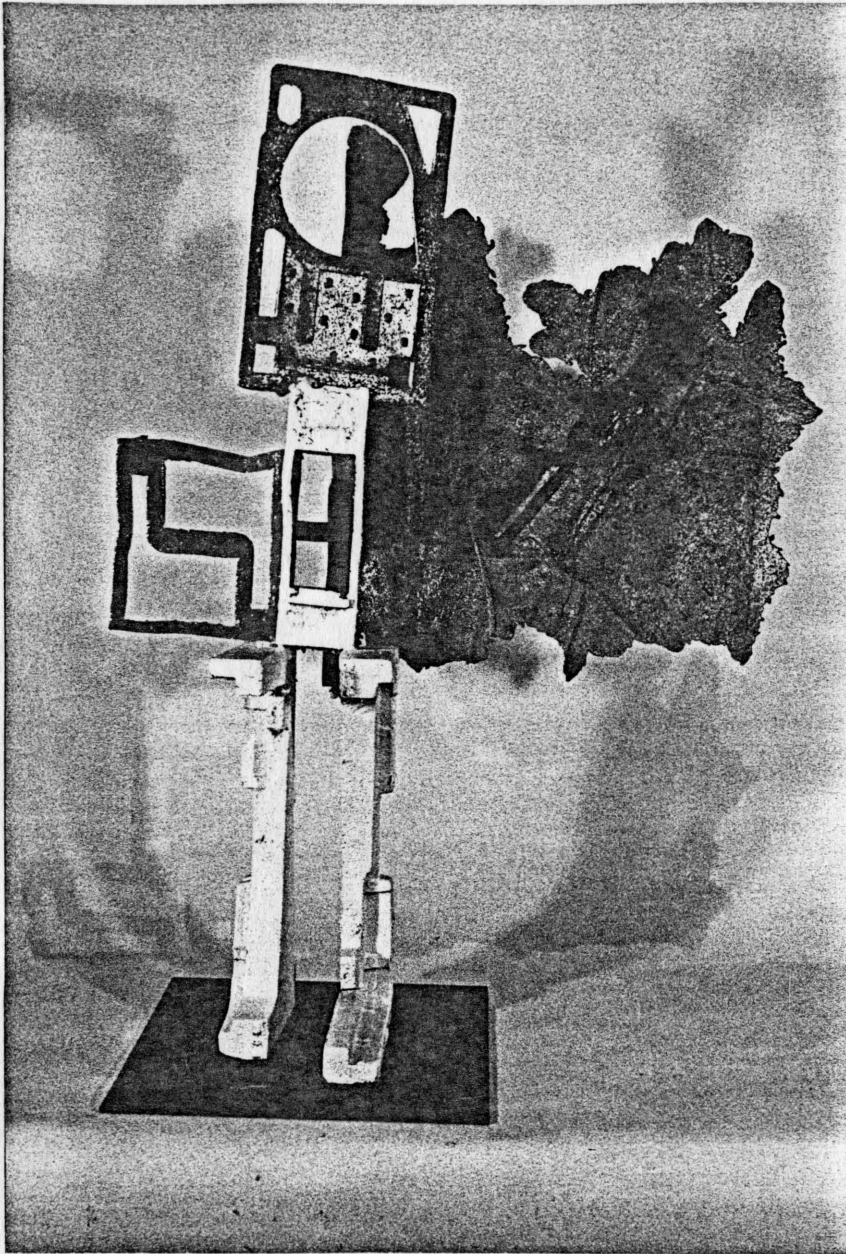


Fig. 10. H. H., Full mold sand cast aluminum,
56" x 53" x 55".

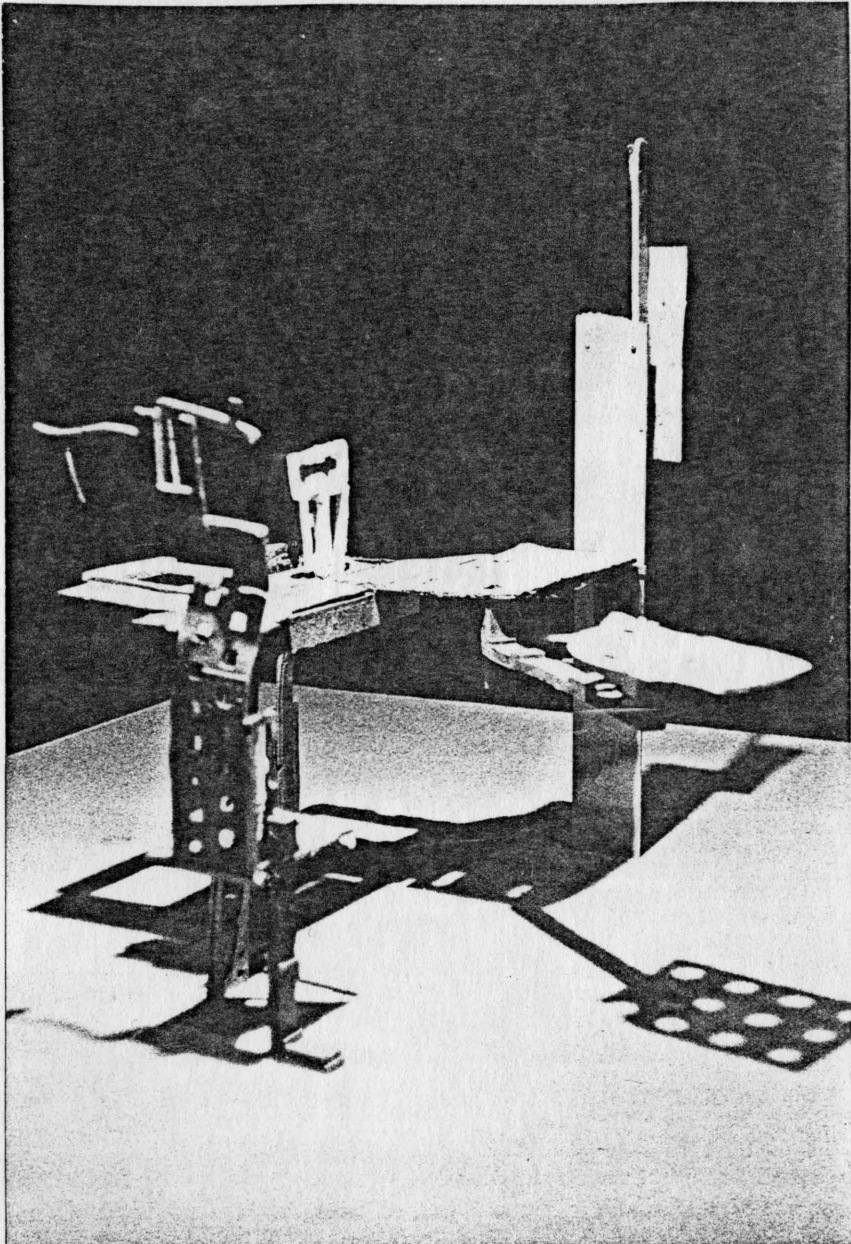
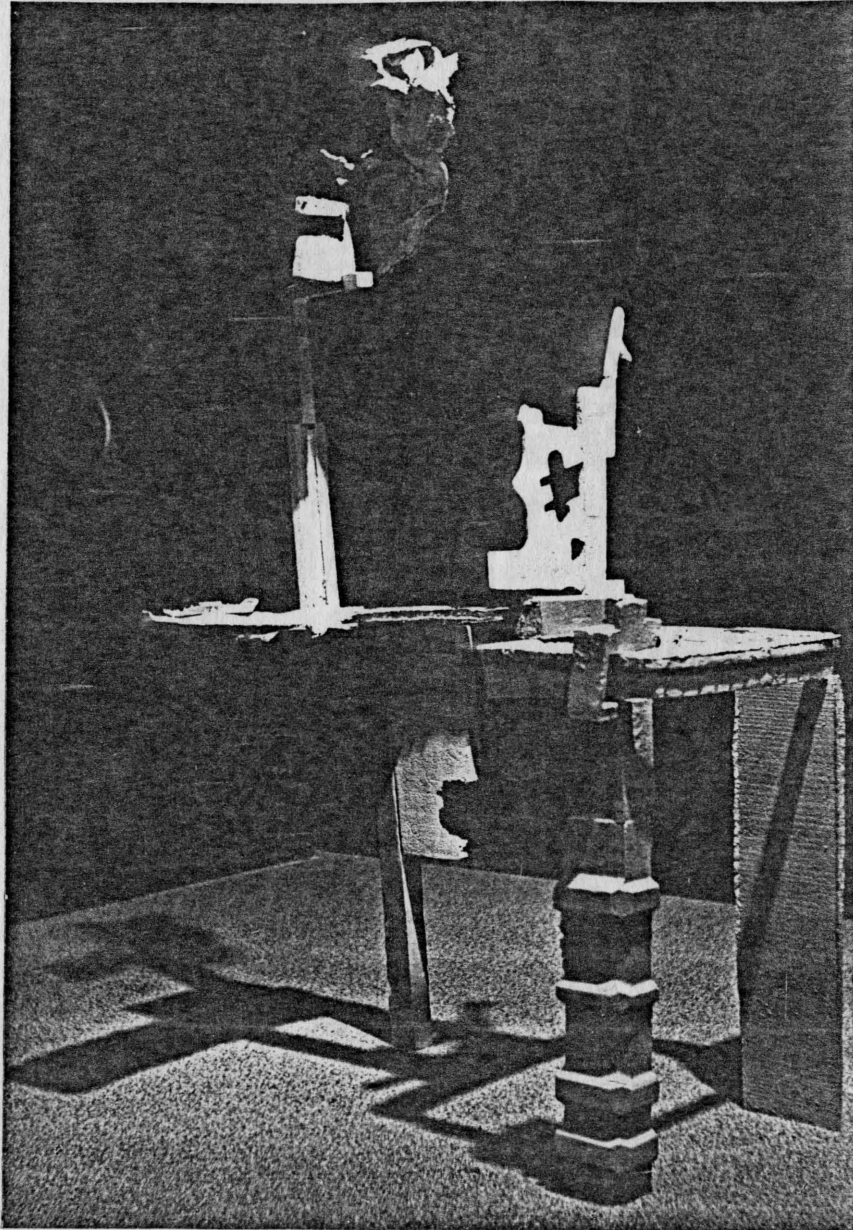


Fig. 11. Open, Full mold sand cast aluminum,
59" x 34" x 31".



APPENDIX

PATINAS

- Fig. 1. Victory, brown wax
Wire Brushing
- Fig. 2. Orange Shellac, 3 lb. cut
- Fig. 3. Victory, brown wax
Parafin
Johnson's paste wax
Carbon
SPRAYVAR # S-140, Hunter Green
Wire brushing
- Fig. 4. SPRAYVAR # S-152, Chrome Yellow
SPRAYVAR # S-133, American Beauty Red
SPRAYVAR # S-202, All Purpose White
Wire brushing
- Fig. 5. Victory, brown wax
Wire brushing
- Fig. 6. Victory, brown wax
Wire brushing
Polyurethane

- Fig. 7. Blue Crayola crayon
 Parafin
 Victory, brown wax
 Wire brushing
- Fig. 8. Ferric Nitrate
 Wire brushing
- Fig. 9. SPRAYVAR # S-152, Chrome Yellow
 SPRAYVAR # S-133, American Beauty Red
 SPRAYVAR # S-160, Regal Blue
- Fig. 10. SPRAYVAR # S-140, Hunter Green
 SPRAYVAR # S-202, All Purpose White
 SPRAYVAR # S-113, Dove Gray
- Fig. 11. SPRAYVAR # S-113, Dove Gray
 Deshler-All Purpose Enamel # K22-AL Grey Primer

THESIS PROPOSAL

This thesis will explore assembled compositions contrasting fragility with rawness and brutality. The form relationships are predetermined, however, the surface qualities are a chance occurrence of the full mold casting process.

Dennis Lee Stroh
Art Department
Colorado State University
Spring, 1979