

Library Connection

Vol. 7, No. 3

February 1993

Colorado State University Libraries

Interlibrary Loan

A National Leader in Cost Efficiency

The Association of Research Libraries and the Research Libraries Group recently collaborated on a benchmark study of the cost of interlibrary loans (ILL). Seventy-eight (78) research institutions participated in the study.

The study was undertaken because of the growing magnitude and significance of interlibrary loan services required to meet the needs of those served by research libraries. The number of new titles published each year continues to grow and to be included in online catalogs and indexes and the cost of journal subscriptions continues to increase. As library budgets have failed to keep pace, the reliance on interlibrary loans has doubled in the past five years with no end in sight. The data from this study will enable libraries to better assess the relative costs and benefits of ownership and access, since interlibrary loan is one of the primary means of accessing materials a library does not own.

The results of the study were just released, and while there has not yet been time for a thorough analysis, the results for Colorado State University are very interesting. All figures are for 1991.

	CSU	Median
Total ILL transactions filled	44,771	24,760
Total items borrowed	19,008	8,046
Total items loaned	25,763	15,864
Unit cost to borrow an item	\$10.54	\$17.55
Unit cost to loan an item	\$ 6.64	\$ 9.18
Number of volumes in the collection	1,384,400	2,349,703

While our collection is relatively small and our reliance on borrowing relatively high, our unit costs for providing this service are low. In short, we have a very cost effective interlibrary loan operation.

Joan Chambers
Director of Libraries

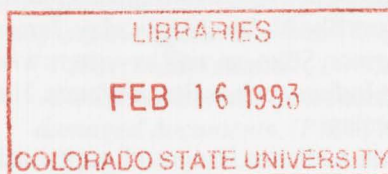
The Reserve Desk Goes Electronic

If you have been waiting for the Reserve Desk to enter the 20th Century, it has finally happened!! The Access Services Department is pleased to introduce a new service, Electronic Reserve. Its purpose is twofold: 1) to make access to reserve materials easier for your students, and 2) to provide you with the ability to create or add to your course reserve lists from your office PC.

The first part of this service, Reserve On-Line!, is designed to place reserve materials on lamar, the CSU mainframe computer. Students can access these materials electronically by simply dialing lamar from their home PC with modem, or by using one of the computer labs on campus. They do NOT need a special account to

use this service on lamar. The computer program is written in an easy to use, menu-driven format. Students just follow the on-screen instructions to select the articles they wish to read. As a pilot project, we are beginning by placing non-copyrighted materials (such as course notes, sample tests, your own material, etc.) on-line. We plan to expand this service to copyrighted materials during the

continued on page 3



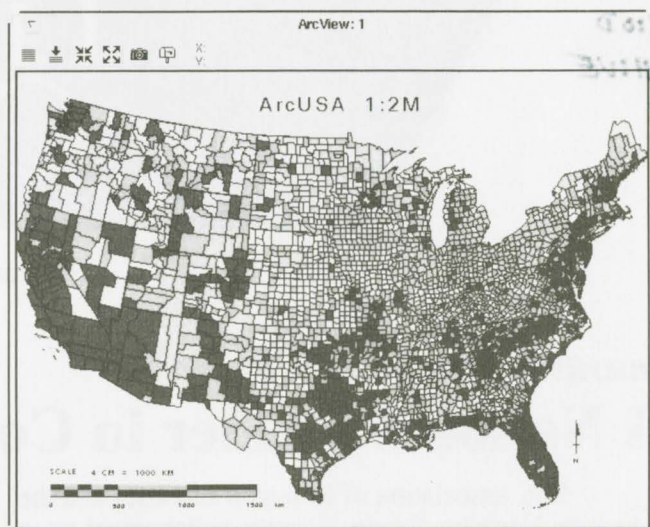
**Colorado
State**
University

GIS Now Available at the Library

Geographic Information Systems (GIS) allow one to create maps from a set of data. Various data layers can be displayed simultaneously, or one can query a database and selectively choose attributes to display on a map. Cartographic data such as boundaries, rivers, roads, and cities can be combined with other types of data such as population, vital statistics, health, education, and environmental data. By displaying data spatially one can visually identify patterns that are difficult to see in any other way. You will be able to create and print such maps in black and white by using a laser printer in the Documents Department.

The Libraries were selected to participate in the Association of Research Libraries (ARL) GIS literacy project, and therefore, can now provide access to ArcView and various data sets. ArcView is a GIS system developed by Environmental Systems Research Institute (ESRI) which reads data sets created using ESRI's ArcInfo system. The Documents Department has a CD-ROM workstation dedicated to the use of ArcView with the following data sets:

- 1) ArcWorld is 1:3,000,000-scale data for the entire world of coastlines, political boundaries, rivers, roads, railroads, and water bodies. More than 50 demographic attributes can be associated with these features.
- 2) ArcUSA is 1:2,000,000-scale data of the United States. Included are state and county boundaries, roads, rivers, water bodies, federal lands and over 100 demographic attributes for display at the state and county level.



Net Migration 1980-1986, by County

3) ArcCensus will display 1990 Census data at the census tract and block group levels.

4) ArcScene contains landsat images.

If you would like a demonstration or further information about the Libraries' GIS, please contact Suzanne Taylor, Documents Department, Morgan Library, 491-1880.

*Suzanne Taylor
Documents Department*

"Corner on Collection Development"

The Western Fiction Collection

There is probably *no* library in Colorado that fails to collect the literature of the American West. The myth and fact of the West is imprinted upon our everyday lives and has produced a body of writing both daunting in scope and overwhelming in sheer numbers.

While the University of Colorado at Boulder and the Western History Department of the Denver Public Library have comprehensive collections of Western Americana, Colorado State University Libraries maintains a smaller, more focused special collection devoted to Western fiction. The collection was originally developed to support graduate programs in the English Department. Over the years the collection has expanded to include the new generation of Western writers, including Native American writers like N. Scott Momaday, James Welch, and Leslie Marmon Silko, as well as writers who focus on the American Indian, such as Frank Waters, Hal Borland, and Craig Lesley.

Western fiction connotes images of paperback

novels, and novelists of this genre are well represented, including Max Brand, Zane Grey, and Louis L'Amour. More established writers include Jack London, Owen Wister, Wallace Stegner, Edna Ferber, Walter Van Tilburg Clark, and Edward Abbey. Frederick Remington, normally thought of only as an artist and illustrator, wrote several novels that he also illustrated.

Barbara Branstad, the bibliographer for this collection, keeps abreast of the new generation of writers, including Ivan Doig, Tony Hillerman, Dan Coldsmith, Larry McMurtry, and Thomas McGuane.

This collection of over 2,000 works is located in the lower level of Morgan Library, near the Newspaper and Current Awareness collections. Works in the collection are identified by the designation "Western" below the call number and may be checked out.

*Joel Rutstein
Collection Development Officer*

Update on CARL

CARL, the online catalog, is very popular with the CSU community but you need to be aware that it is not yet complete. Two years ago when the Libraries first implemented CARL, it contained information on approximately 200,000 books and journals as well as 150,000 federal documents. Because there are approximately 160,000 books which are not yet on CARL, the Libraries has kept the card catalogs. Most of the titles that can only be found via the card catalog were published before 1977 and are primarily in the social sciences and humanities.

There are two projects underway to add the information in the card catalogs to CARL. The first was funded by a CSU diversity grant and will add approximately 60,000 titles to CARL in subjects related to diversity. The second project will add data for over 100,000 titles. We hope to complete these projects by June 1993.

Other important additions to CARL this fall were a serials update and a linking project. The serials update now makes it possible for you to see if a particular issue of a journal has arrived and to see a list of bound

volumes. The update also includes adding the "CSU" symbol in UnCover, the current periodicals index. This process of adding our symbol to journal titles is not complete, so please don't assume that a journal is not in the Libraries if our symbol is missing.

The linking project attaches information on individual bound volumes to the main title. You may have been puzzled to find multiple listings for the same journal title on CARL: this is being corrected. You may also have been frustrated because bound volumes may not be listed in sequence. In the summer of 1993, we will move to a new version of the CARL software which we expect will put most of the volumes in consecutive order.

If you have any questions about the information on CARL or about searching CARL from your home computer or office, please contact a reference desk: Social Sciences and Humanities Reference, 491-1841; or Sciences and Technology Reference, 491-1887.

*Margo Sasse
Head, Catalog Department*

Reserve from page 1

next phase of the project. In addition, for those students who do not have access to a computer or computer lab, or simply prefer working with original material, all Reserve On-Line! materials will be available in paper form at the Reserve Desk.

The second part of this service, E-Mail Reserve, provides you with the opportunity to e-mail us your reserve request lists. As you make your requests, you will be prompted to enter all necessary information. Before you finish each entry you will be able to review and correct any information. We will retrieve these lists and print them out for you on our reserve form. In addition to e-mailing us your lists, you may use campus mail to send us any personal copies, and we will collect library materials from the shelves for you. This new service will streamline for you the whole process of placing materials on reserve.

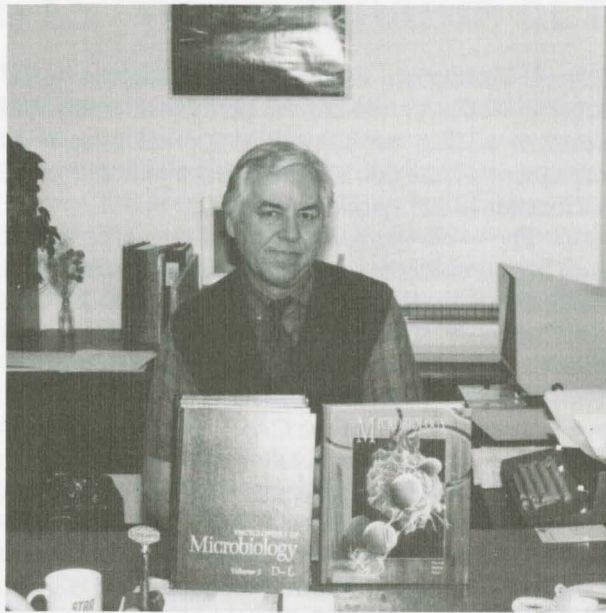
To take a look at how Reserve On-Line! works, you can use VINES to telnet to lamar. When the system prompts you for the host name or IP address, enter "lamar." At the lamar login, simply enter "reserve"; no password is necessary. If you have questions, you can e-mail us at:

"jfarmer%access%libraries@vines.colostate.edu" or, "tdelaney%access%libraries@vines.colostate.edu."

*Tom Delaney and Jim Farmer
Access Services*



Amy Wyant, a student in the University's Administrative Offices, shows the results of a water leak which damaged several boxes of files from the office. The Wei T'o Book Dryer and Insect Exterminator, owned and used by the Libraries, will be utilized to recover the damaged documents. (Photo by Tom Delaney)



Professor Donald Kline, Department of Microbiology, pictured with the textbook he co-authored and the four-volume Encyclopedia of Microbiology both of which he is donating to the Libraries. (Photo by Tom Delaney)

Exhibits Calendar

Black Awareness Month
February

Science Fiction Week
(materials from CSU Libraries' Imaginary Wars Collection), and
Mission Earth
(materials from the Science Fiction and Fantasy Club)
January 31 - February 13

Books from Australia
February 14 - 27

Resources for Disabled Students
February 21 - March 6

Great Works in Reproduction
(materials from CSU Libraries' Special Collections)
February 28 - March 13

**Colorado
State
University**

Colorado State University Libraries
Fort Collins, Colorado 80523

DOCUMENTS DEPARTMENT
CSU LIBRARIES

Library Connection is published four times during the academic year to acquaint users with the resources of Colorado State University Libraries. Requests to be placed on the mailing list or comments about the newsletter should be referred to the Editorial Board: Anna DeMiller, chair (491-1858 or ademiller@vines.colostate.edu), Tom Delaney, and Halcyon Enssle.