



Visit
Cachi,
Argentina

Home of the
Pepperchinita



Pepperchinita
Cachi, Argentina

Artist Statement

Kayleigh Blanco

In regards to the art world, I find it challenging to place myself into a category of style or idea because of how young I am as an artist. I am merely a tiny sprout that has planted itself among the oaks and redwoods of the art world. I can, however, find a pattern through each conquering I have made as I complete piece after piece. Patterns I find within my work today include bright color, photographic elements, clarity, realism, collage, motion, geometric shape, and interactivity. My personal logo is a trio of circles, each a different color. I find strength in solid colored shapes. The confidence that exudes in a simple, solid shape is matchless. The work of Ellsworth Kelly is a raw version of shapes exuding this confidence. My piece, "Latin Portraits" (2014), explores a repetitive arrangement of triangles that make up collages of celebrity faces. My renditions of photographic collage express my desire to be clear and realistic in my design work. Richard Hamilton's "Just What Is It That Makes Today's Homes So Different, So Appealing?" (1956), compliments my style and exploration in cut-out collage and photorealism. This can be seen in my work, "Sounds of Summer" (2013). My work takes a more literal route than abstract. In my piece, "Pepperchinita Website" (2013), I have arranged photographic elements to a page that give a realistic viewpoint of a chef working at a kitchen table. Within the piece, a photographed pestle provides a link to another webpage, allowing the website to be interactive and engaging. There is a wholeness in art that is repetitive, and consistent in that repetition. Bold blocks of color arranged together, imperialize an idea or design. Barnett Newman is a long-standing idol in my eyes of using color and shape to imperialize a piece. His long strips of paint were likely influential in my design, "Estes Park Logos" (2013). My exploration in repetition can be seen in the photographic design, "14th International Conference on X-Ray Lasers" (2014). In this piece, I have arranged opaque circles that surround and repeat the design of the dark-ringed laser device. The interlocking of the circles creates a solid core that draws a captivating, celestial shape. My obsession in the circular shape is repeated through many of my works including, "Pepperchinita Brochure" (2013), "Estes Park Summer CD" (2013), and again, my personal logo.

<u>Title</u>	<u>Media</u>	<u>Original Format</u>
Figure 1: Beastly Bites	Graphic Design	Print. 9.5 x 9.5
Figure 2: Beastly Bites	Graphic Design	Print. 19 x 9.5
Figure 3: Estes Park Summer CD	Graphic Design	Print. 11 x 17
Figure 4: 14th International Conference on X-Ray Lasers	Graphic Design	Print. 11 x 17
Figure 5: Latin Portraits	Graphic Design	Print. 4.25 x 5.5 (6)
Figure 6: Estes Park Logos	Graphic Design	Print. 8.25 x 8.5
Figure 7: Pepperchinita Brochure	Graphic Design	Print. 18 x 5.25
Figure 8: Pepperchinita Website	Graphic Design	Print. 5.75 x 7.5
Figure 9: Pepperchinita Yellow Peppers	Graphic Design	Print. 11 x 17
Figure 10: Sounds of Summer	Graphic Design	Print. 11 x 17
Figure 11: Estes Park T-shirt Designs	Graphic Design	Print. 13 x 18



Beastly Bites

A book of recipes for the furry and fiesty.

Written and designed by Kayleigh Blanco

Figure 1: Beastly Bites.

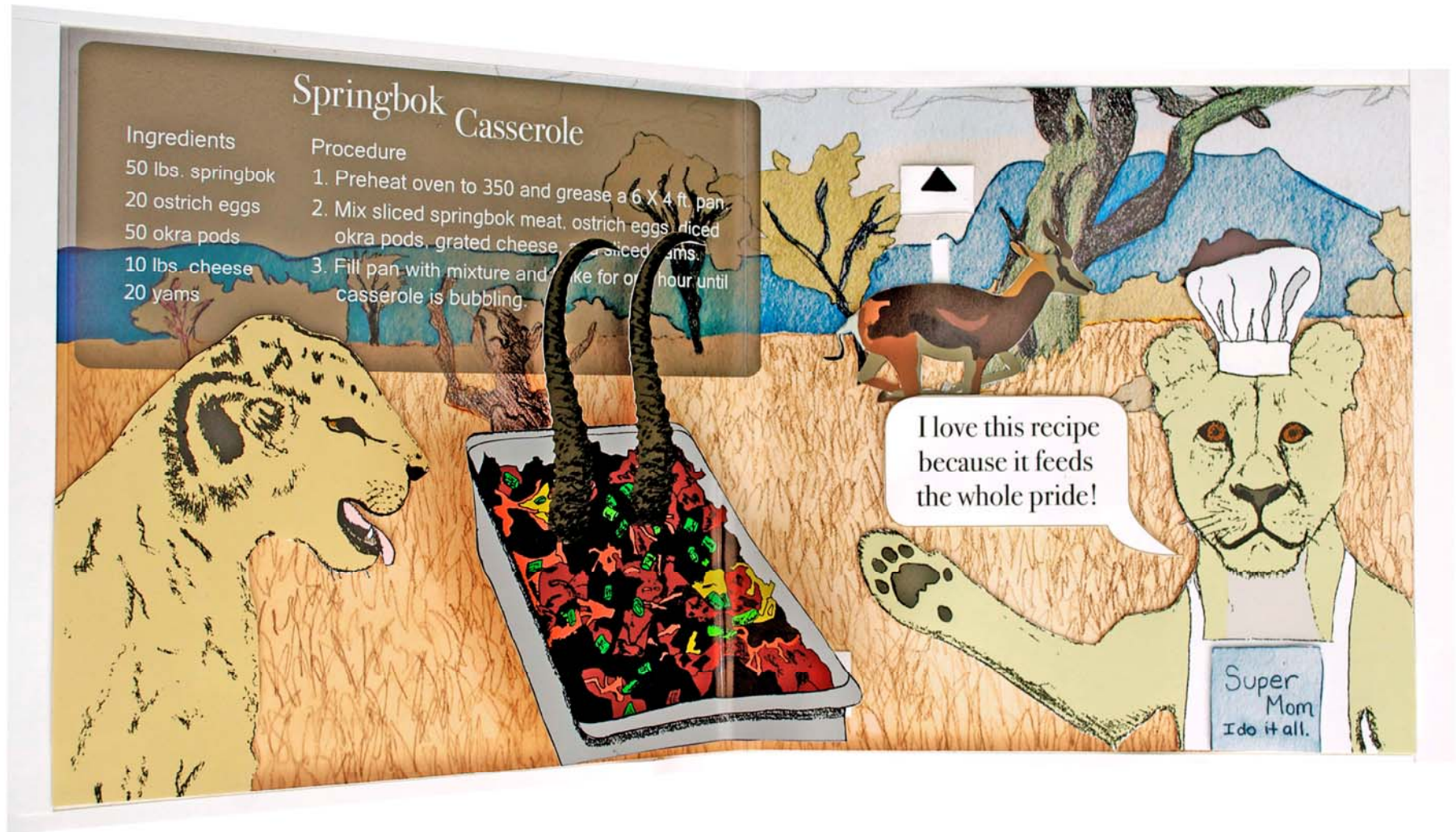


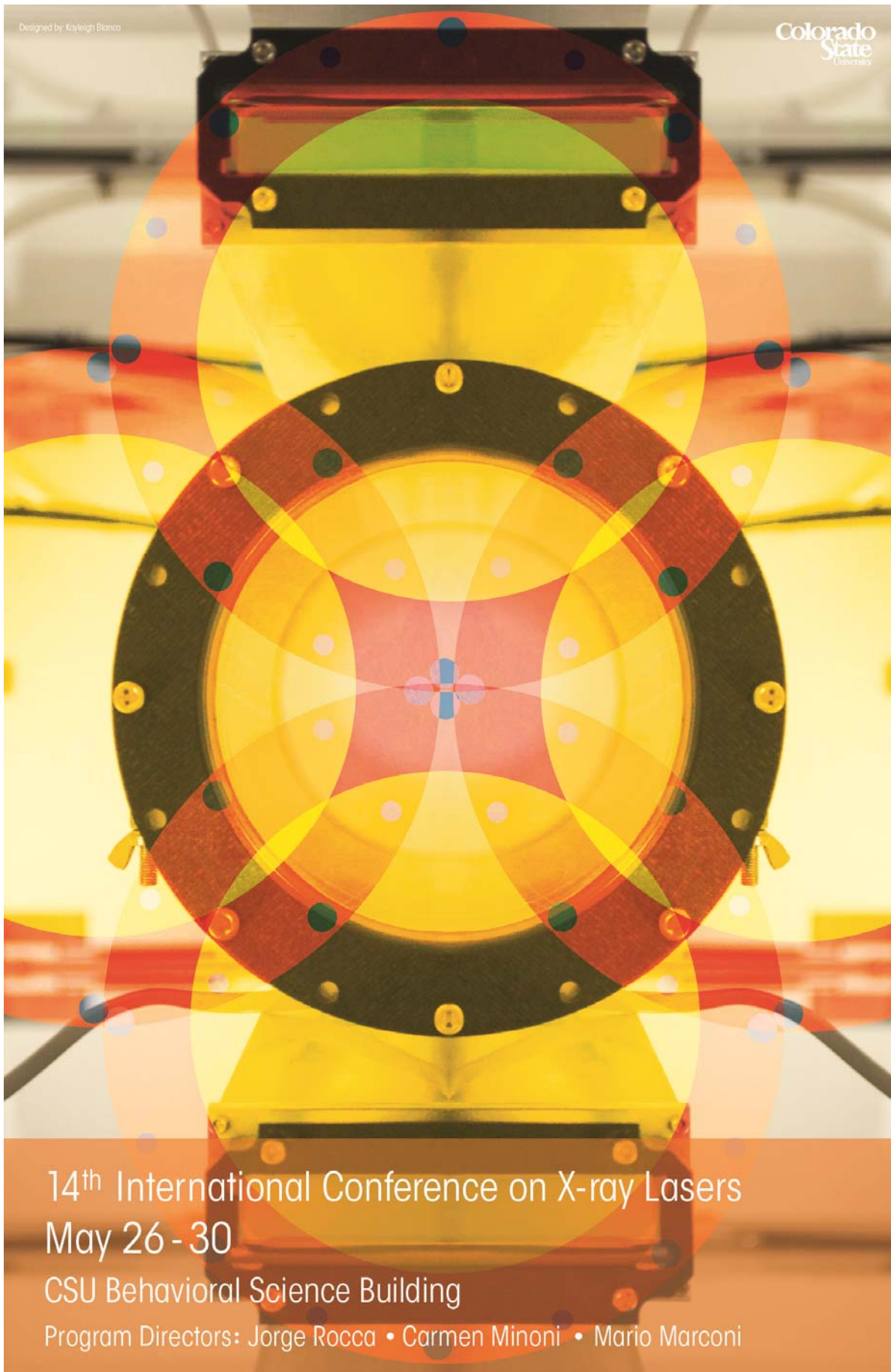
Figure 2: Beastly Bites.



Figure 3: Estes Park Summer CD.

Designed by Kayleigh Bianco

Colorado
State
University



14th International Conference on X-ray Lasers
May 26 - 30

CSU Behavioral Science Building

Program Directors: Jorge Rocca • Carmen Minoni • Mario Marconi

Figure 4: 14th International Conference on X-Ray Lasers.

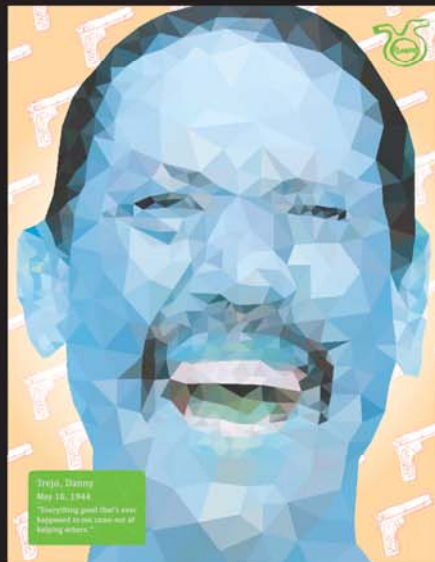
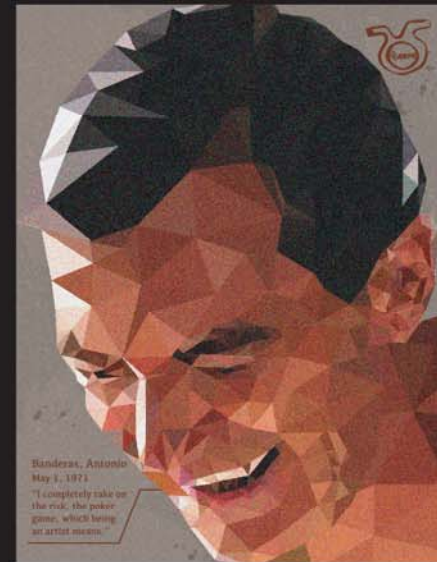
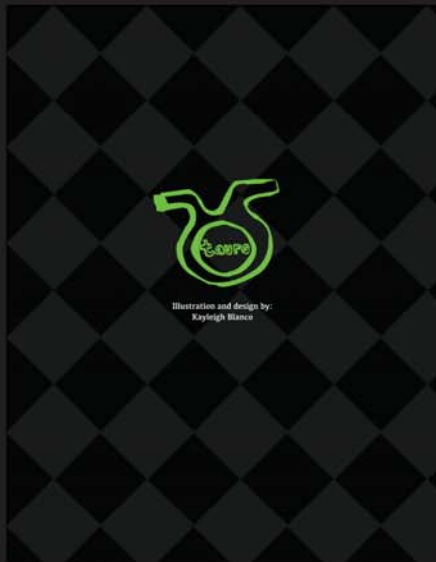


Figure 5: Latin Portraits.



Figure 6: Estes Park Logos.



Figure 7: Pepperchinita Brochure.

Pepperchinita
Cachi, Argentina

Home About Legend Visit

Pepperchinita
Cachi, Argentina

Home
About
The Legend
Visit

News

Pepperchinita proudly presents the Annual Chili Festival Commemorative at the Mercado del Aliso featuring culinary workshops and workshops.

Writing of the National Chili Pepper Conference Fall to Show 2013 - Chilo ZA Chile Project

La Merced del Aliso (workshop by 10th anniversary)

Explore the kitchen

Founder Guillermo Benabde

Parque Nacional los Cardeneros

The Plantation

Mail: Pepperchinita, Hacienda Pimentas, H3336GRA Cachi, ARGENTINA
Call: 0-3868-54-0653
E-mail: pepperchinita@aol.com

Pepperchinita
Cachi, Argentina

Home
About
The Legend
Visit

Accommodations
Environment
Kitchen

Grind the spices.

+1

15 Points
Cash your points

Pick up the knife and see how fast you can slice the pepper.

Mail: Pepperchinita, Hacienda Pimentas, H3336GRA Cachi, ARGENTINA
Call: 0-3868-54-0653
E-mail: pepperchinita@aol.com

Pepperchinita
Cachi, Argentina

Home
About
The Legend
Visit

Profile

Meet our founder, Guillermo Benabde, a believer in the legacy of the Pepperchinita. In 1980, Benabde discovered plantation farmers taking care of a beautiful area of land that became his dream.

the history of the land and the value that year. During this time of the farmer's life, he saw many of the pepper's best qualities in the same place. He decided to partner with the remaining clubs, but making the land known by others and shared with a few lines transferred the city of Cachi and the story of many Benabde. He brought the plantation to an international level and it continues to grow.

Founder Guillermo Benabde

Dig the Plantation

Pepperchinita is a chili pepper plantation based in Cachi, Argentina. The world of the Pepperchinita began with a legend. Its legacy lives through our dedication in preserving and sharing this beautiful land of Cachi. Check out our package deals that are specialized to fit your ideal get away.

Mail: Pepperchinita, Hacienda Pimentas, H3336GRA Cachi, ARGENTINA
Call: 0-3868-54-0653
E-mail: pepperchinita@aol.com

Figure 8: Pepperchinita Website.



Figure 9: Pepperchinita Yellow Peppers.



ESTES
PARK
**MUSIC
FESTIVAL**
PRESENTS

SOUNDS ^{OF} SUMMER

Summer 2013
At the Stanley Hotel

\$30 tickets
Students and children free
Doors open at 7:00 p.m.
Concerts begin at 7:30 p.m.
<http://www.estesparkmusicfestival.org/>



Figure 10: Sounds of Summer.



Figure 11: Estes Park T-shirt Designs.