



DIGITAL & ARCHIVE SERVICES

Department Newsletter

Reaching OUT

Mara Sedlins presented on data management practices to the Veterinary Summer Scholars Program, and during a class of the Responsible Research in Atmospheric Science course.

Digital Repository & Data Management HIGHLIGHTS



CSU President Charles Lory

In July, Digital Collection Services added the digitized professional correspondence of Charles A. Lory to Mountain Scholar, <https://hdl.handle.net/10217/184955>. Lory served as a professor of electrical engineering and from 1909 to 1940 as the fifth president of Colorado Agricultural College (now Colorado State University). He was also heavily involved in the development of the Colorado-Big Thompson Project. A prolific correspondent, his letters range from 1888 to 1964. His diaries, currently part of a crowdsourcing transcription project through From The Page, <https://fromthepage.com/csulibraries/charles-a-lory-diaries>, provides additional context to his correspondence.

New Data Sets

A recent article appearing in *Communications Earth & Environment* examined how mentorship is critical to the success of undergraduate women pursuing geoscience careers. The study randomly assigned 158 undergraduate women to a set of three workshops to identify the combination of elements required to directly promote undergraduate women's role modeling and mentoring experiences, as well as to indirectly promote scientific identity, coping skills, and persistence in completing their studies. The results indicated that inspiration through interaction with female role models, training on growing a mentor network, and collaboration with a local, female, and geoscience mentor are critical elements of a successful mentorship program. The article is available at <https://doi.org/10.1038/s43247-020-0005-y>, and the data set is available in Mountain Scholar at <http://dx.doi.org/10.25675/10217/201607>.

BY THE NUMBERS

Archives & Special Collections

92 users

165 feet of new/additional collections + digital

Data Management

11 data deposits

Digital Repository

122,602 Mountain Scholar page views (CSU-FC)

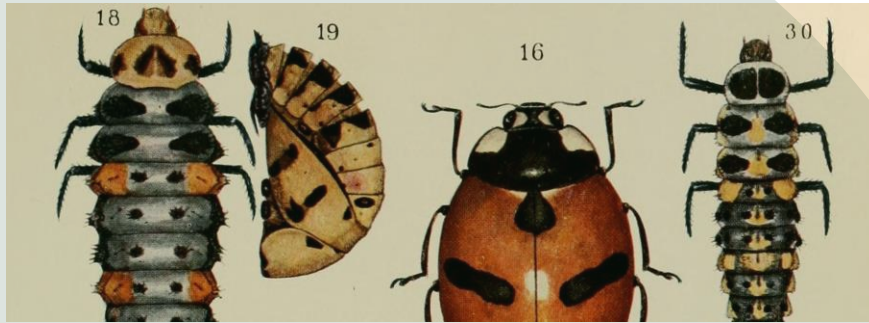
26,512 Mountain Scholar downloads (CSU-FC)



DIGITAL & ARCHIVE SERVICES

Department Newsletter

Archives & Special Collections HIGHLIGHTS



Dr. Miriam Palmer Addition

Dr. Miriam A. Palmer, an entomologist, zoologist, and scientific illustrator, was a CSU professor from 1904-1951. She was an expert artist in illustrations of insects and sculpting fruits in wax, and considered a world authority in the study of aphids. More than 15 feet of drawings, illustrations, and other materials have recently been acquired from the Plant Sciences department. The new materials will join Palmer's wax apples, already made available in Archives & Special Collections.

Palmer created exquisitely detailed drawings and paintings during the early to mid-1900s of Colorado insects including bees, beetles, and many varieties of aphids. Many of the line drawings were used to illustrate her book, *Aphids of the Rocky Mountain Region*. Professor Palmer also authored Colorado Extension publications, including *The Ladybeetle and Other Beneficial Insects*, see <http://hdl.handle.net/10217/17540>.

New Guides for Water History

Several new guides to help researchers delve into water history have been created this summer. These include three river basin guides, for the Arkansas, Big Thompson, and Rio Grande, and a groundwater guide, each of which suggests books along with the most relevant archival collections. We also created a guide to finding women in western water history, since they can sometimes be elusive. Available at <https://libguides.colostate.edu/waterhistory/wra> and <https://libguides.colostate.edu/waterhistory/women>.

FOCUS FORWARD

A new transcription project will start fall 2020. The project features letters from the CSU Board of Governors and Extension Office directors, along with the diaries of Llewellyn A. Moorhouse, an agricultural economist and the head of the department of economics and sociology at Colorado Agricultural College.



Llewellyn A. Moorhouse, 1923

Notable

In partnership with the Avenir Museum of Design and Merchandising, the department is digitizing content for [Mountain Scholar](#) and building the online exhibit entitled "Threads of Our Community." The project is sponsored by a grant from the National Endowment for the Humanities.