



Field Update: Scouting and Seed Collection

ALEXANDRA SEGLIAS

DENVER BOTANIC
GARDENS

RARE PLANT SYMPOSIUM 2018

Asclepias uncialis

EO 2629 Lake Pueblo State Park

- Population not found

EO 13839 Lake Pueblo State Park

- 3 plants found



Potentilla rupincola

EO 1198 Hermit's Hollow Campground and Kruger Rock Trail

- Found plants – need to confirm ID





Penstemon degeneri

EO 4453 Tanner Trail– population found

EO 11799 Population found along drainage

EO 11443 Population not found



Oreoxis humilis

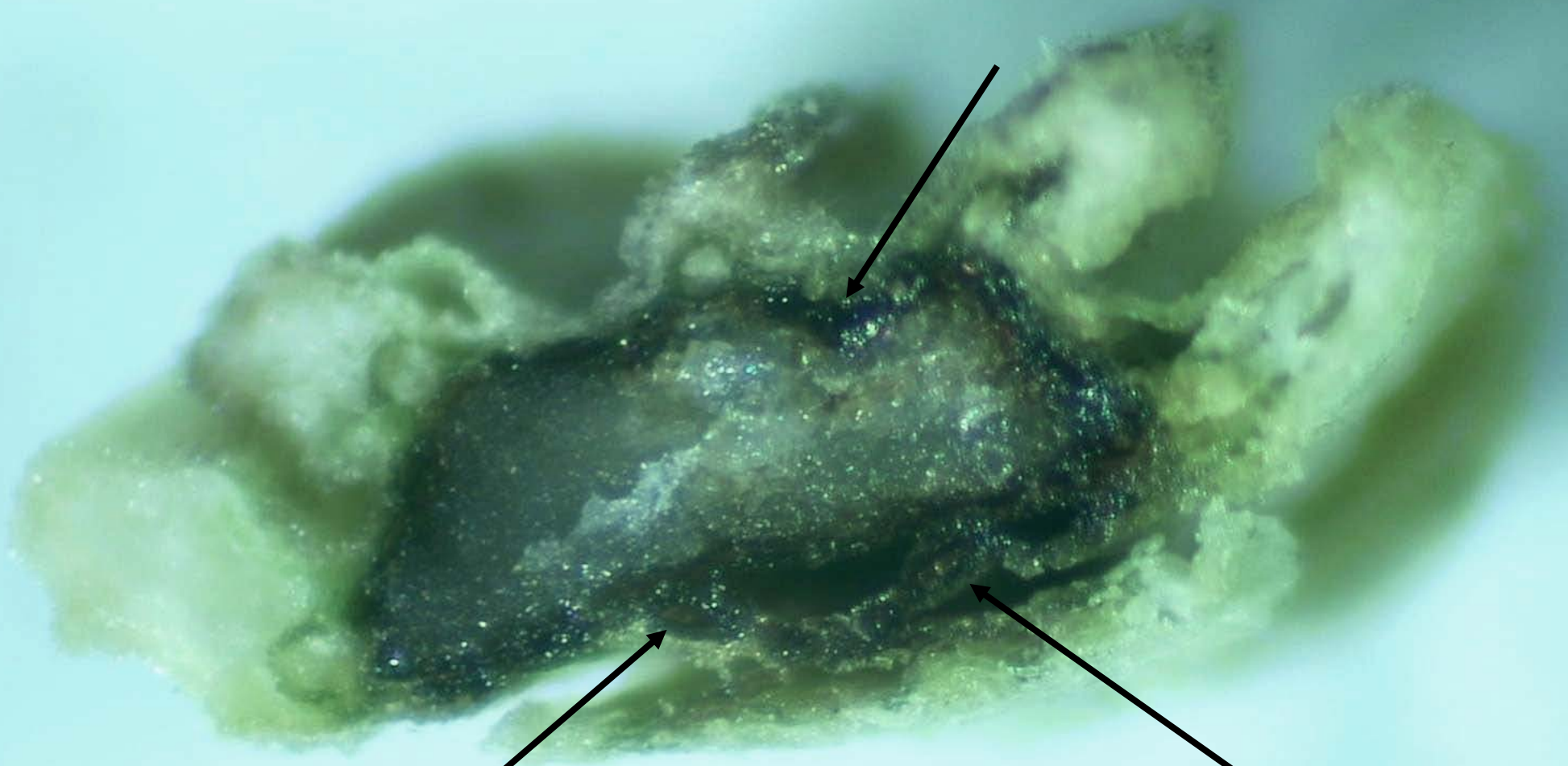
EO 15026, 6692, 2494 Almagre Mountain

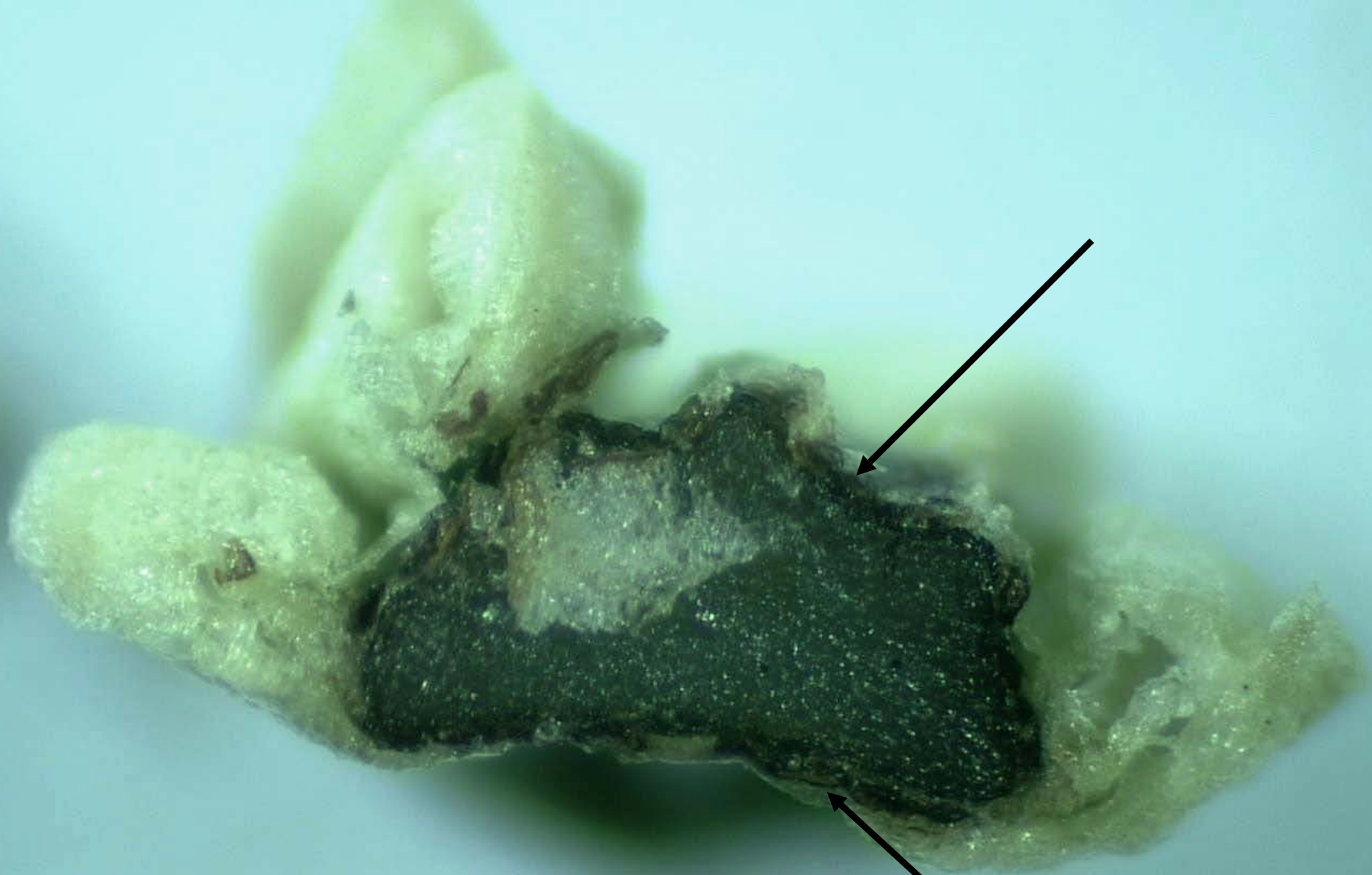
- could not find populations; very rough roads

EO 9187 Pikes Peak Devil's Playground

- population found, need to confirm ID







Physaria bellii

EO 4622 Foothills Open Space

- Seed collected



Physaria alpina

EO 4320 Weston Pass

- Population found – large and healthy; missed window for seed collection

Fourmile Creek Trail, west of Fairplay

- No EO; seed collected



Castilleja puberula

EO 14097 Guanella Pass

- Some *C. puberula* some *C. occidentalis*? Hybrids?

EO 14111 Guanella Pass

- Healthy population, seed collected

EO 14251 Brainard Lake

- Healthy population, seed collected



Ipomopsis globularis

EO 4435 Weston Pass

- Seed collected

EO 9135 Hoosier Pass

- Population found, missed seed collection window

EO 11005 Boreas Pass

- Could not find population



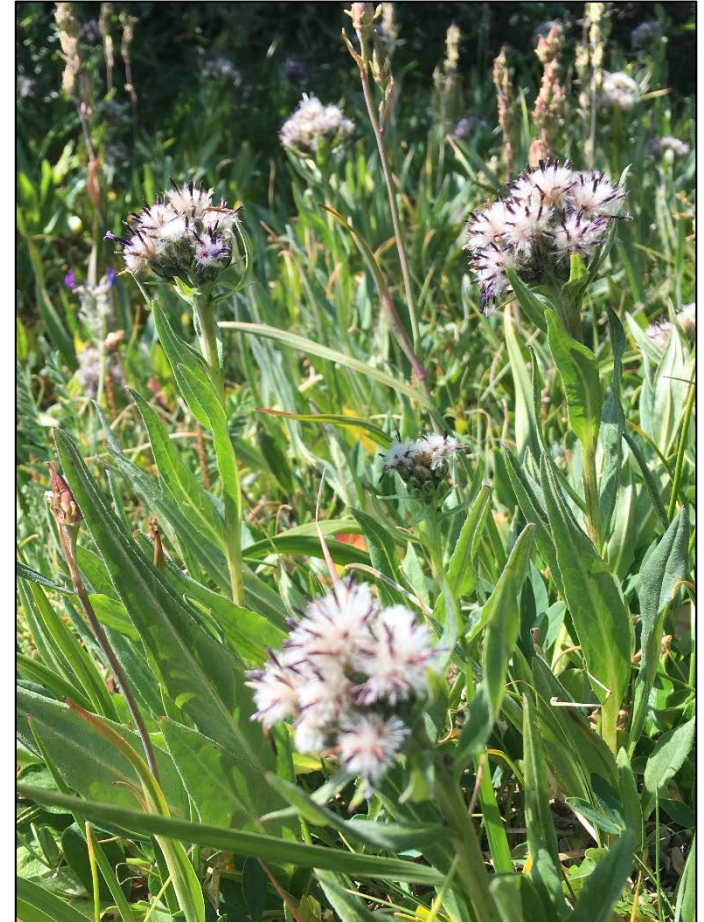
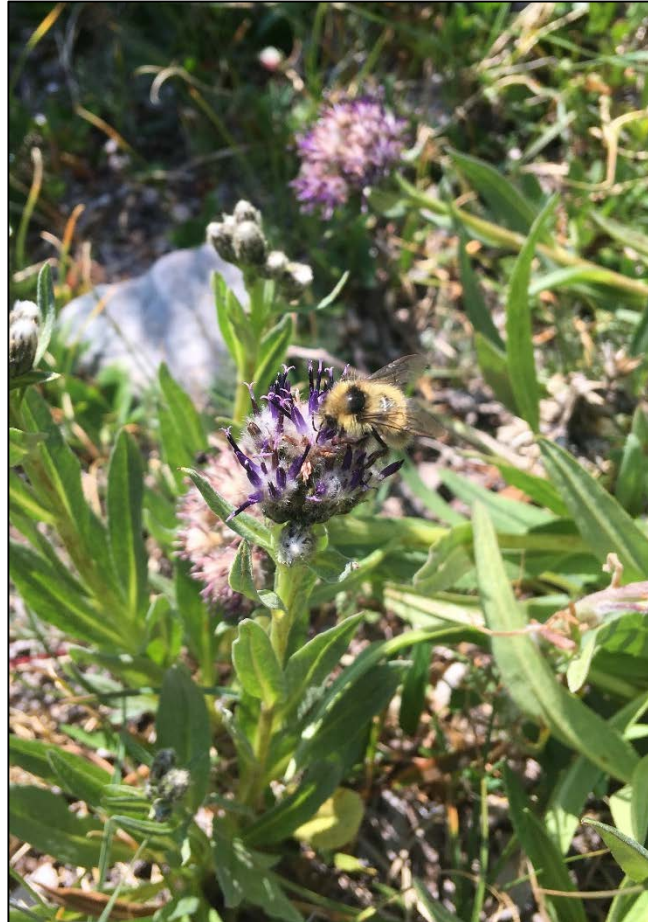
Saussurea weberi

EO 6425 Hoosier Pass

- Seed Collected

EO 9155 Kite Lake Trail

- Could not find population



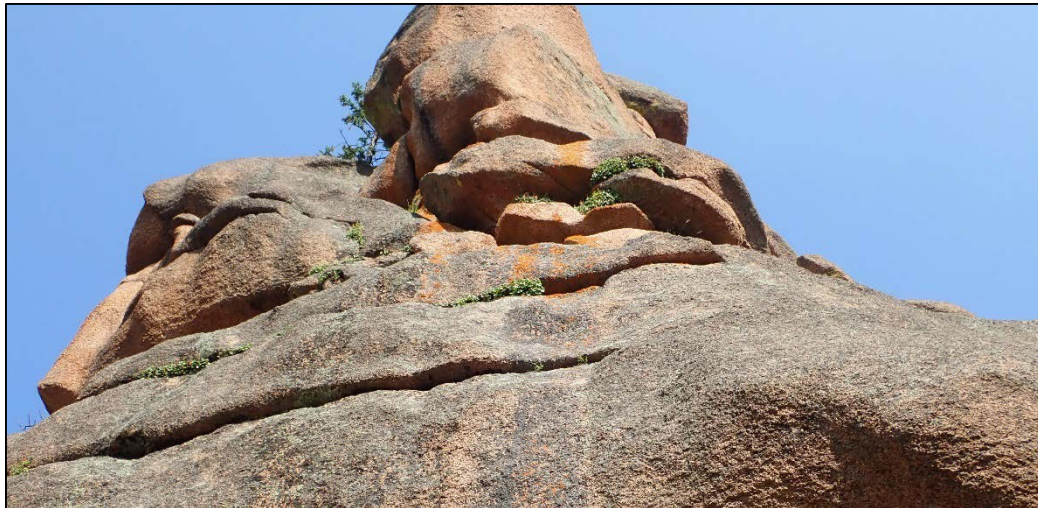
Telesonix jamesii

EO 13648 Craggs Campground

- Population found, target for seed collection in coming weeks

EO 14165 Wellington Lake

- Population not found



Other species scouted

Not found: *Aquilegia saximontana*, *Townsendia rothrockii*, *Mentzelia densa* (?), *Mirabilis rotundifolia* (too dry? Population found last year)

Volunteers scouted for:

Astragalus anisus, *A. linifolius*, *A. naturitensis*, *A. piscator*, *Erigeron kachinensis*, *Eriogonum pelinophilum*, *Lygodesmia doloresensis*, *Mertensia humilis*, *Mimulus eastwoodiae*, *Penstemon retrorsus*, *Phacelia formosula*, *Phacelia submutica*, *Physaria rollinsii*

