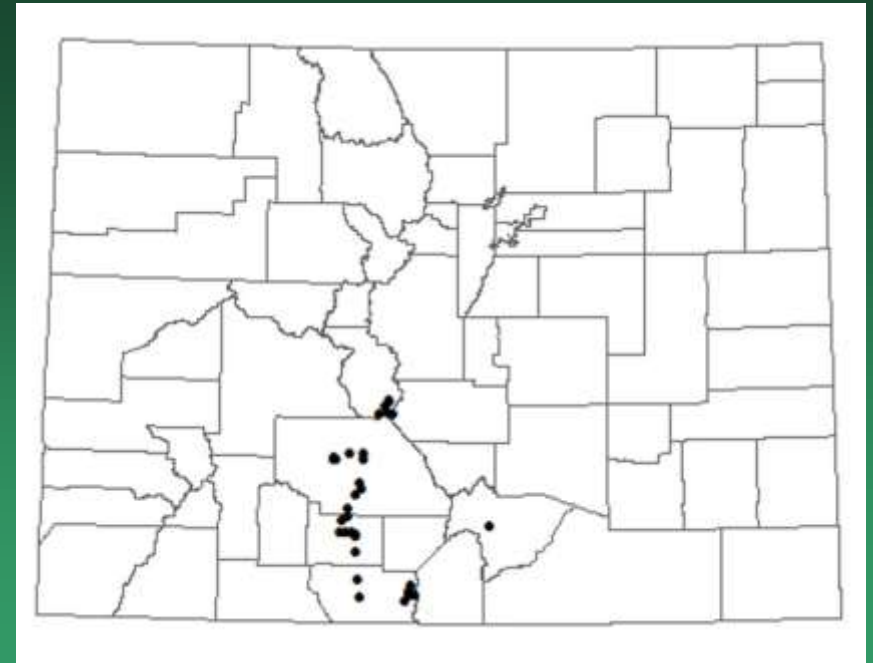


2017

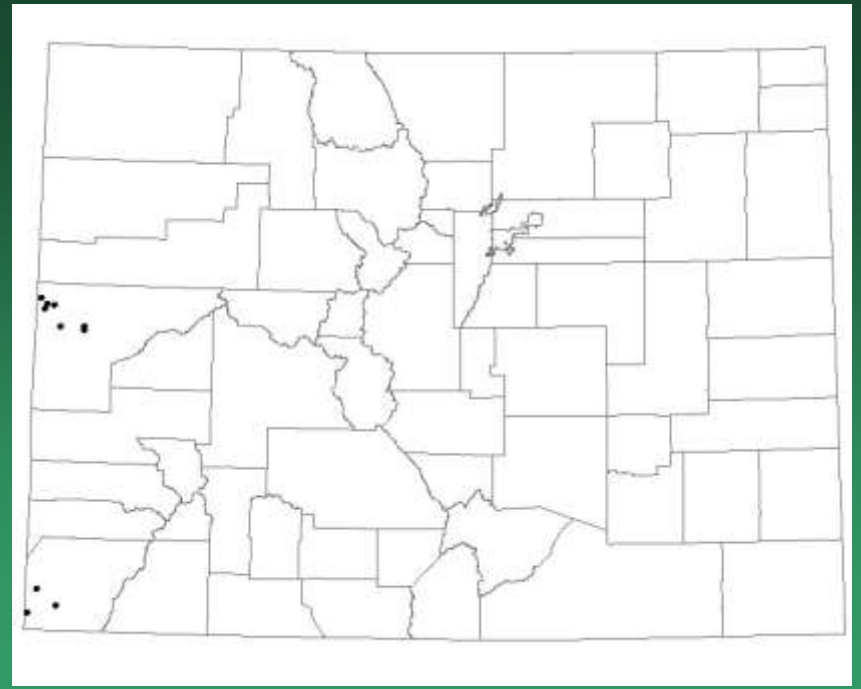
Colorado Rare Plant Symposia  
BLM Sensitive Species  
of Colorado

*Aletes lithophilus*  
(= *Neoparrya lithophila*)  
Rock-loving neoparrya



Reviewed under USFS Sensitive Species

# *Amsonia jonesii* Jones' bluestar

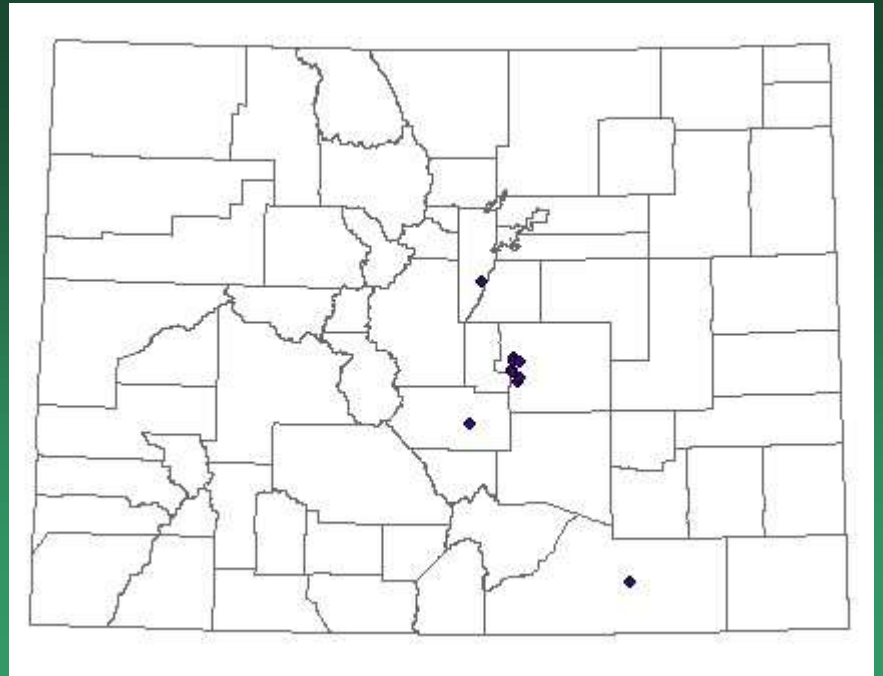


- Federal status: BLM sensitive
- Heritage ranks: G4/S2
- Global distribution: Utah, New Mexico, Arizona, and Colorado (Mesa and Montezuma)
- Elevation range: 4,400-5,800 ft.
- Colorado occurrences: 10 (6 historical)
- Primary threats: Weed invasion and off-road vehicle use

*Amsonia jonesii*

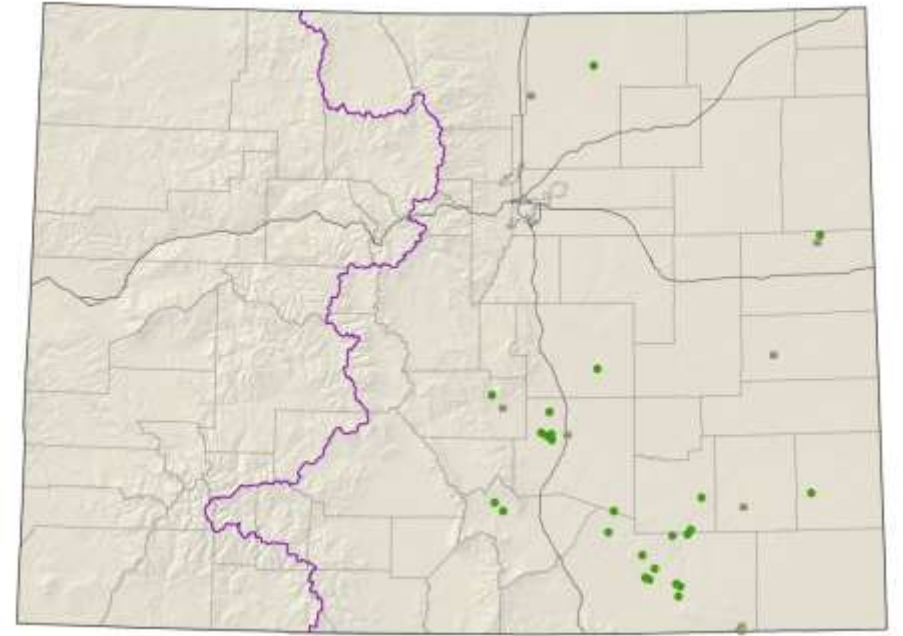


*Aquilegia chrysantha* var.  
*rydbergii*  
Golden columbine



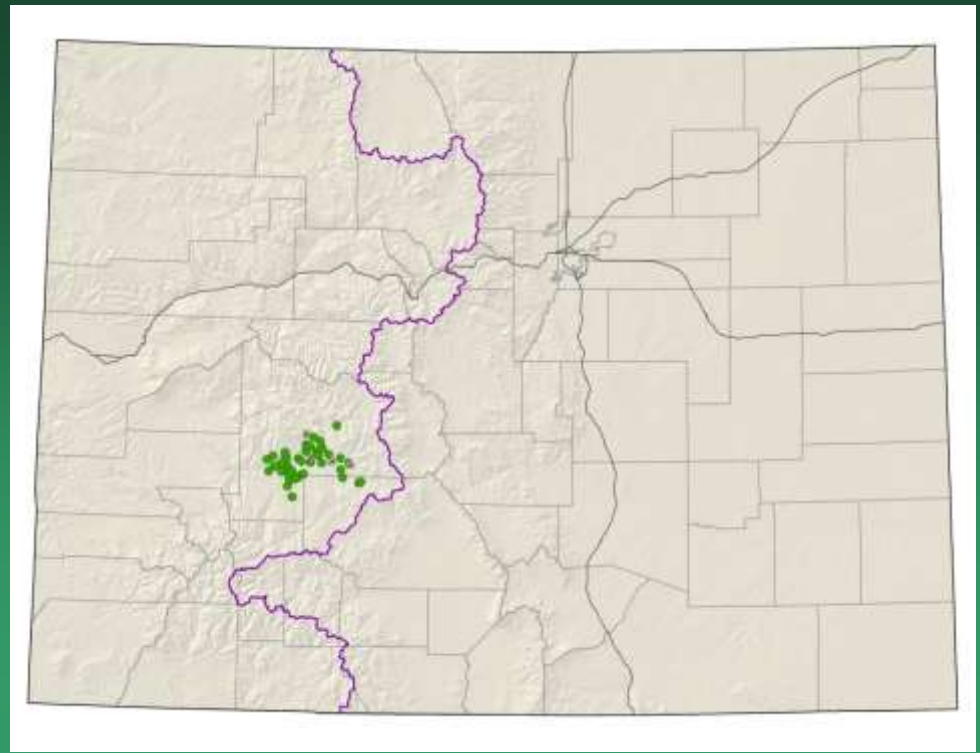
Reviewed under USFS Sensitive Species

*Asclepias uncialis* ssp. *uncialis*  
Dwarf milkweed



Reviewed under SE & Central Colorado  
G2G3 Species

# *Astragalus anisus* Gunnison milkvetch



- Federal status: BLM sensitive
- Heritage ranks: G2G3/S2S3
- Global distribution: endemic to Colorado (Gunnison & Saguache counties)
- Elevation range: 7,520-9,740 ft.
- Last observed in Colorado: 2016
- Colorado occurrences: 41 (5 are historical)
- Colorado individuals: 5000-10,000?
- Primary threats: road building, off-road vehicle use, non-motorized recreation, non-native species invasion, grazing, residential development, fire suppression, resource extraction, and global climate change.
- Land ownership/management: BLM, NPS, federal, state, private, USFS

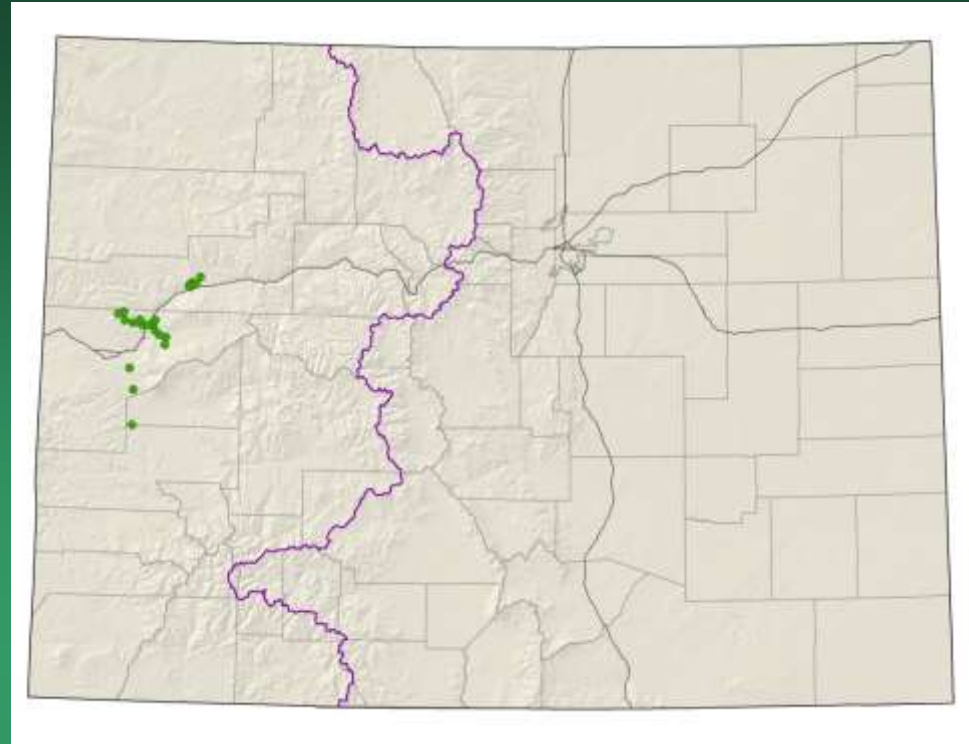


*Astragalus anisus*



# *Astragalus debequaeus*

## Debeque milkvetch

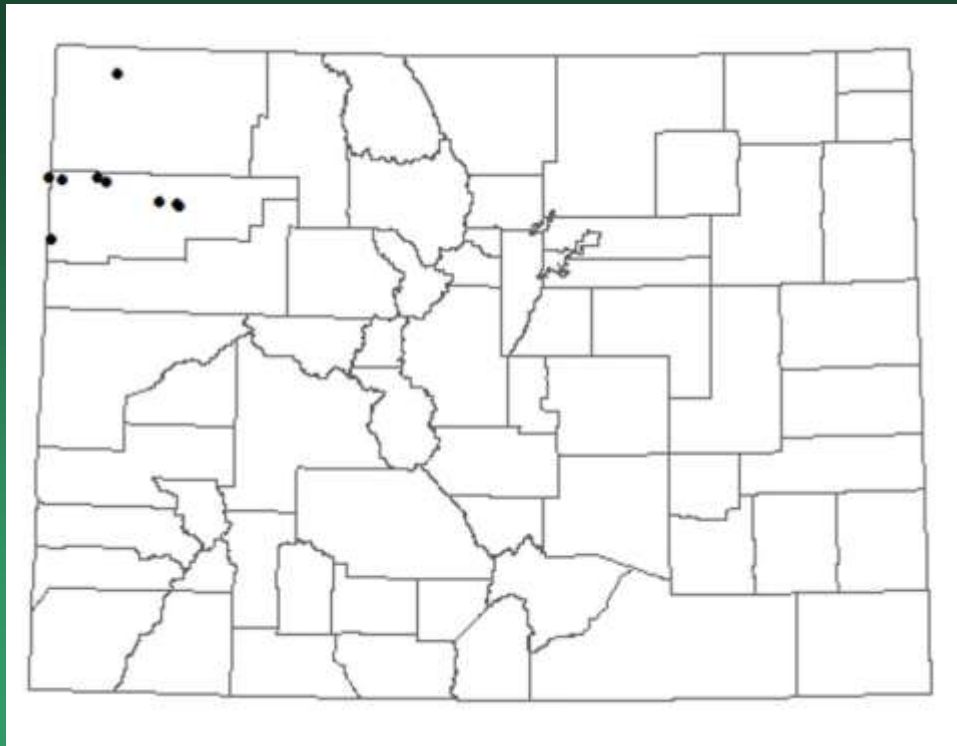


- Federal status: BLM sensitive
- Heritage ranks: G2/S2
- Global distribution: Colorado endemic (Delta, Garfield and Mesa counties)
- Elevation range: 4,950-6,680 ft.
- Last observed in Colorado: 2016
- Colorado occurrences: 25
- Colorado individuals: >62,000
- Primary threats: Disturbance by oil and gas development
- Land ownership/management: BLM, private



*Astragalus debequaeus*

*Astragalus detritalis*  
Debris milkvetch

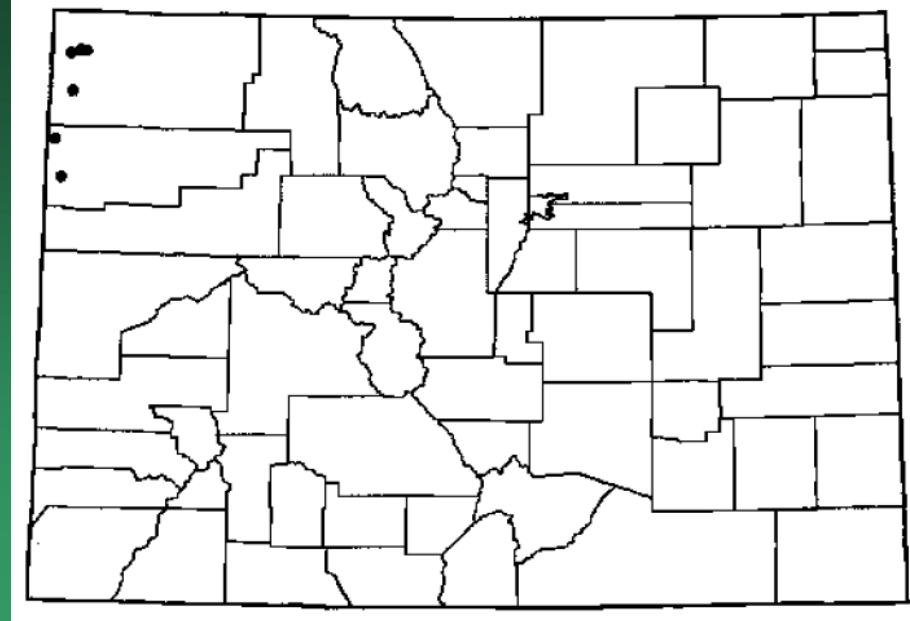


- Federal status: BLM sensitive
- Heritage ranks: G3/S2
- Global distribution: Utah and Colorado (Rio Blanco and Moffat counties)
- Elevation range: 5,380 – 7,200 ft.
- Colorado occurrences: 15
- Primary threats: overgrazing, exotic species, gravel pit development, and road disturbance



*Astragalus detritalis*

*Astragalus duchesnensis*  
Duchesne milkvetch



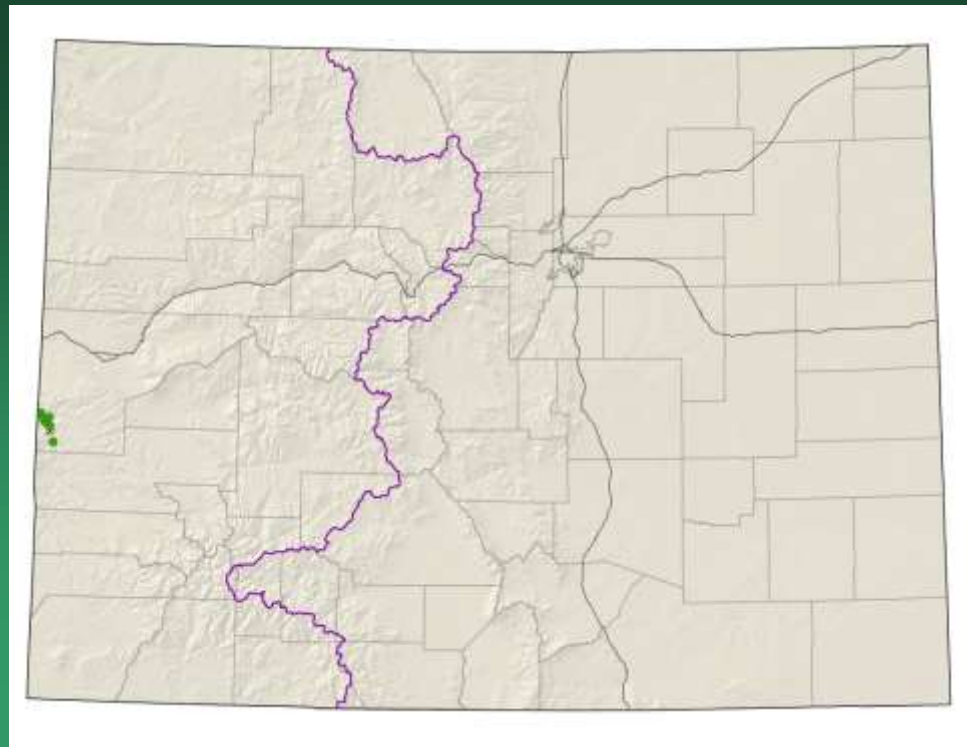
- Federal status: BLM sensitive
- Heritage ranks: G3/S1S2
- Global distribution: Utah and Colorado (Rio Blanco and Moffat counties)
- Elevation range: 4,600 – 6,400 ft.
- Colorado occurrences: 6
- Primary threats: unknown



*Astragalus duchesnensis*

# *Astragalus equisolensis* (= *A. desperatus* var. *neeseae*) horseshoe milkvetch

## Conservation Action Plan



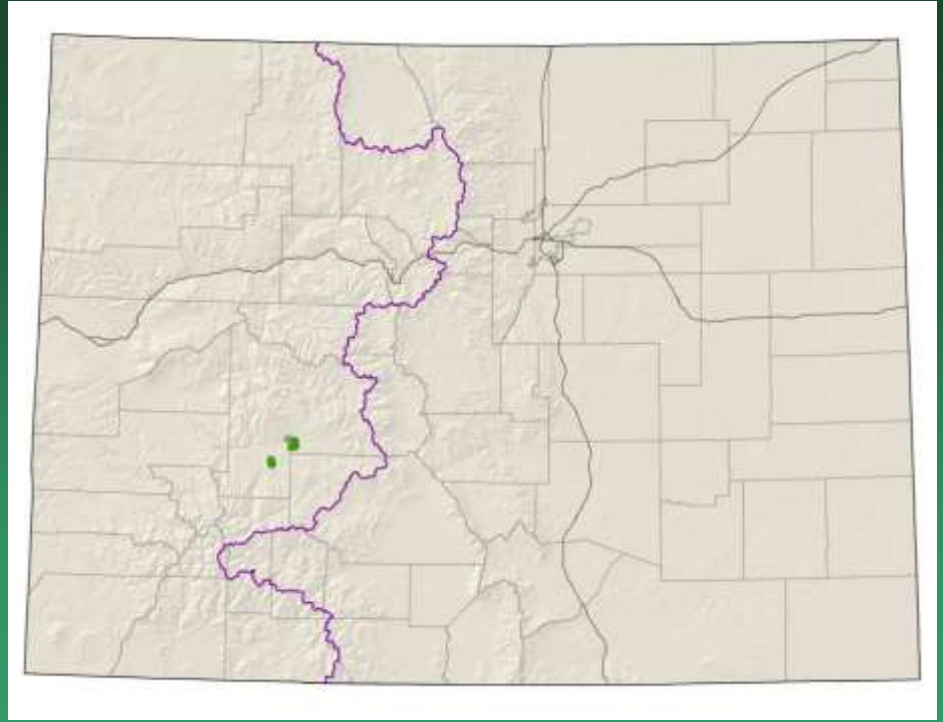
- Federal status: BLM sensitive
- Heritage ranks: G5T1/S1
- Global distribution: Utah and Colorado (Mesa County)
- Elevation range: 4,500-6,030 ft.
- Last observed in Colorado: 2016
- Colorado occurrences: 8 (2 are historical)
- Colorado individuals: 2670
- Primary threats: unknown
- Land ownership/management: BLM, private

*Astragalus equisolensis*



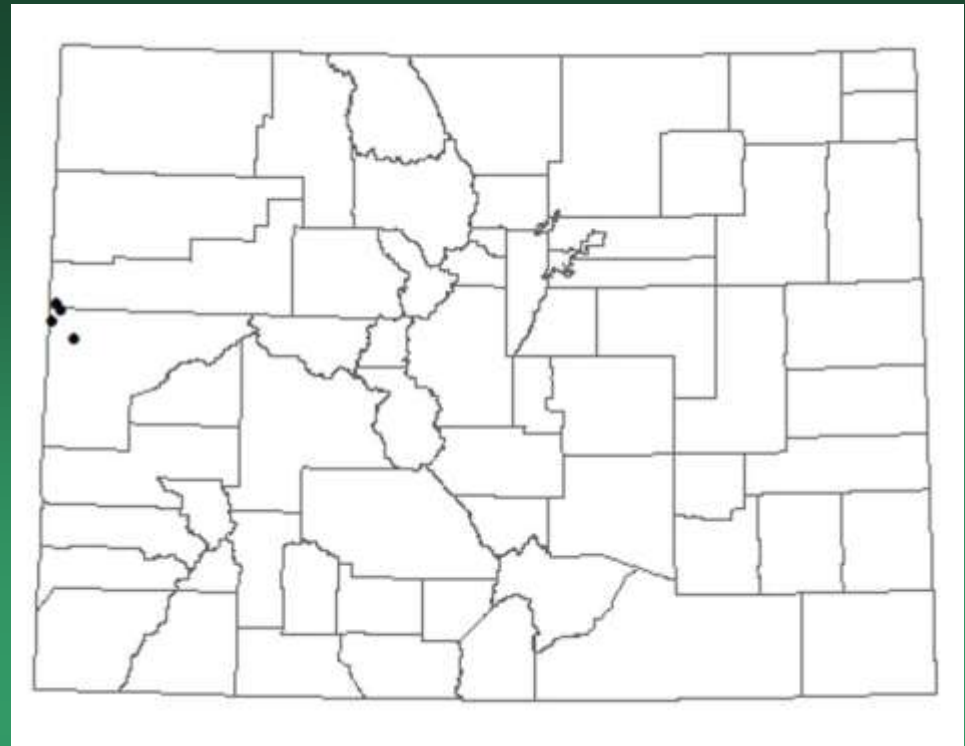


*Astragalus microcymbus*  
Skiff milkvetch



Reviewed under Colorado T, E & C Plant Species

*Astragalus musiniensis*  
Ferron's milkvetch



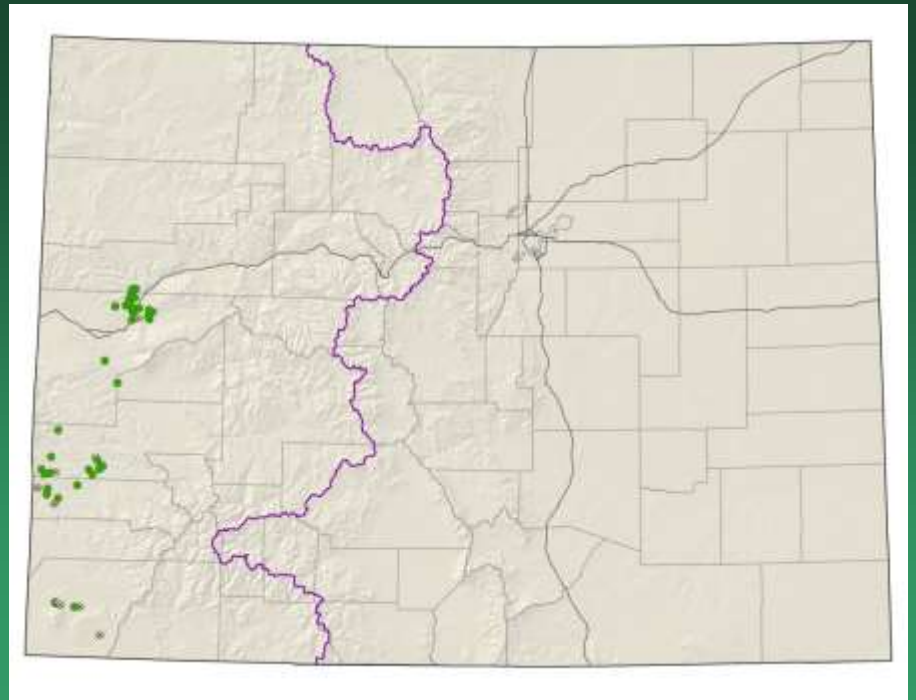
- Federal status: BLM sensitive
- Heritage ranks: G3/S1
- Global distribution: Utah and Colorado (Mesa and Garfield counties)
- Elevation range: 4,560 – 5,560 ft.
- Occurrences: 4 (2 historical)
- Primary threats: unknown



*Astragalus musiniensis*

# *Astragalus naturitensis*

## Naturita milkvetch



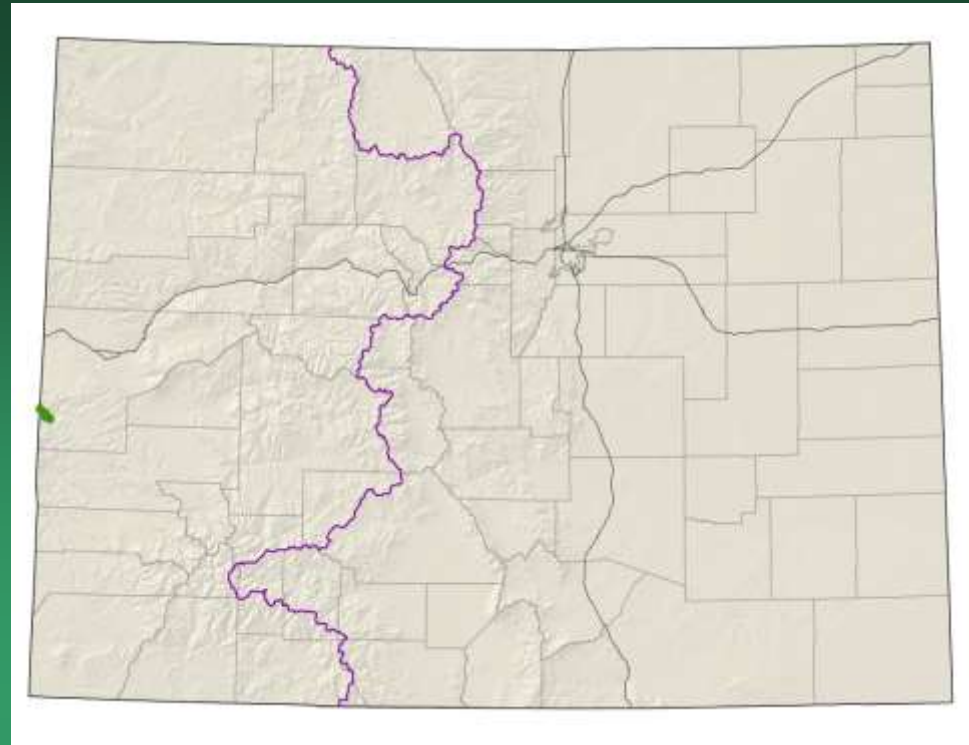
- Federal status: BLM sensitive
- Heritage ranks: G2G3/S2S3
- Global distribution: New Mexico, Utah, the Navajo Nation and Colorado (Garfield, Mesa, Montezuma, Montrose and San Miguel counties)
- Elevation range: 4,830-7,030 ft.
- Last observed in Colorado: 2016
- Colorado occurrences: 45 (11 are historical)
- Colorado individuals: 650 in 2011, + prev. ~ 6500 estimate
- Primary threats: Recreation, Oil and Gas development, Uranium claims
- Land ownership/management: BLM, private, tribe, USFS

*Astragalus naturitensis*



# *Astragalus piscator* Fisher Towers milkvetch

## Conservation Action Plan

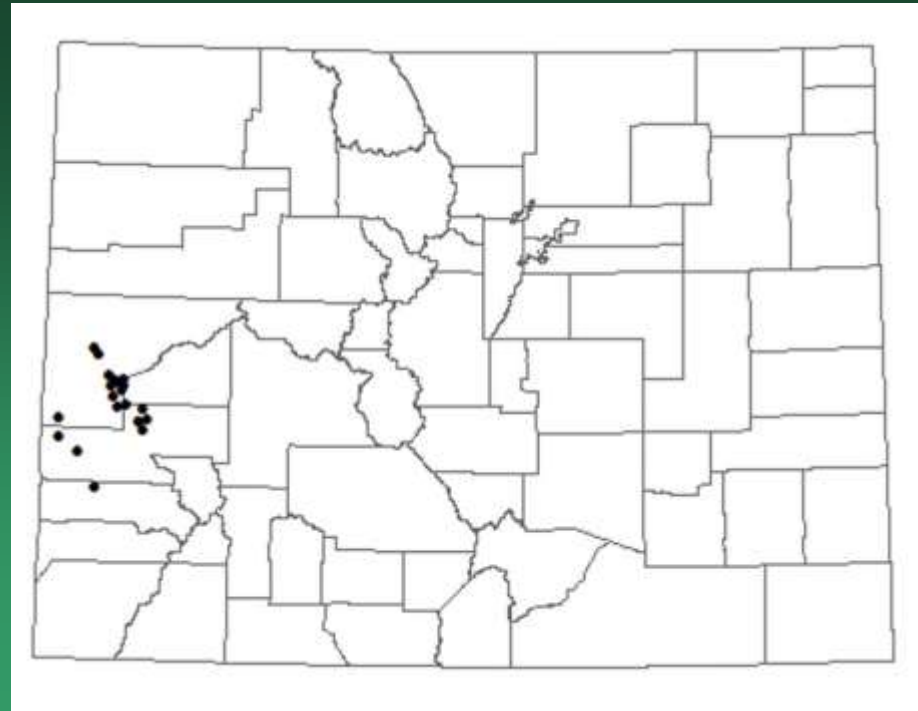


- Federal status: BLM sensitive
- Heritage ranks: G2G3/S1
- Global distribution: Utah and Colorado (Mesa County)
- Elevation range: 4,500-5,580 ft.
- Last observed in Colorado: 2016
- Colorado occurrences: 4
- Colorado individuals: 3000-5000
- Primary threats: recreation, roads
- Land ownership/management: BLM, private

*Astragalus piscator*



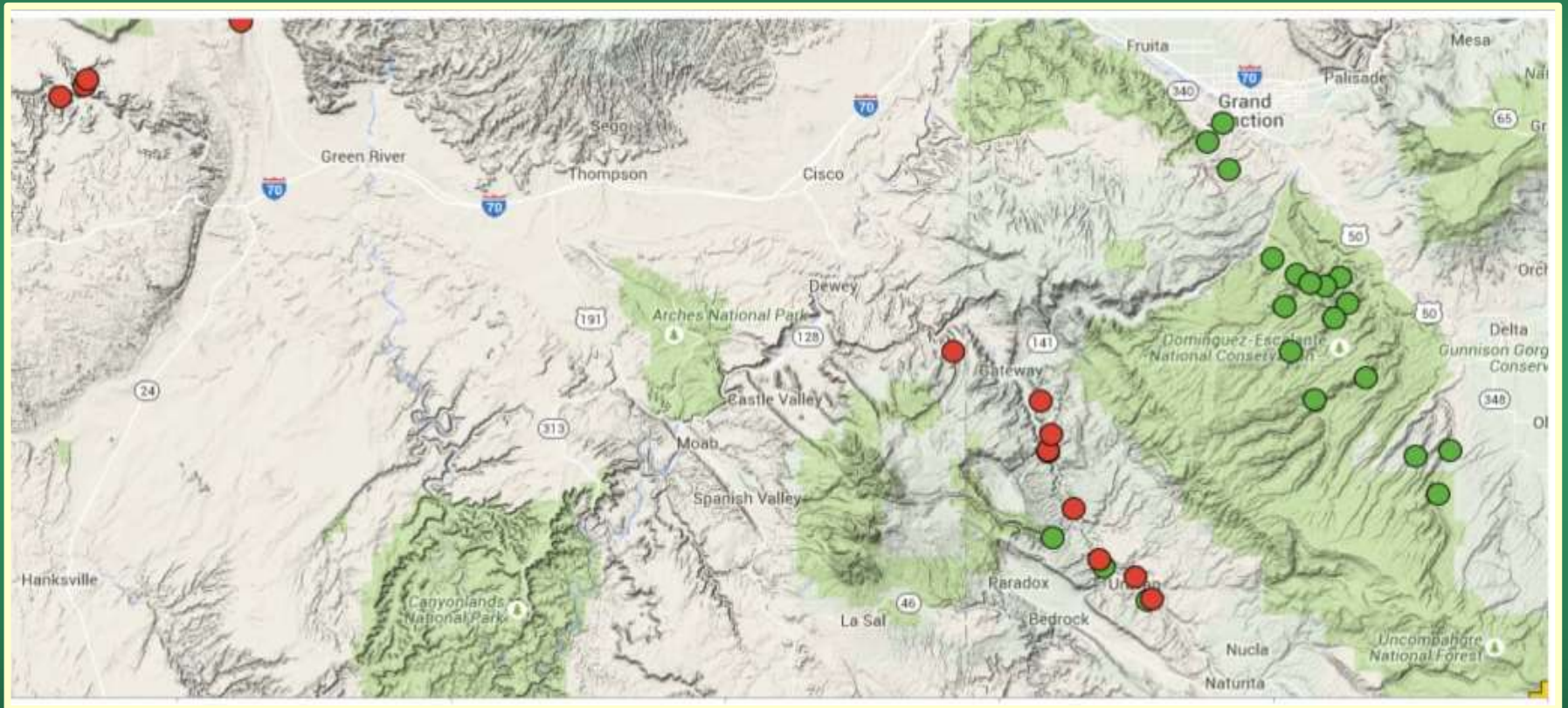
*Astragalus rafaensis*  
San Rafael milkvetch  
(*Astragalus linifolius*)



- Federal status: BLM sensitive
- Heritage ranks: G2G3/S2S3
- Global distribution: Utah and Colorado (Delta, Montrose and Mesa counties)
- Elevation range: 4,720-6,800 ft.
- Last observed in Colorado: 2014
- Colorado occurrences: 30
- Colorado individuals: >1000
- Primary threats: grazing, invasive weeds, motorized recreation, and insect larvae infestation
- Land ownership/management: BLM, private



# Distribution of *Astragalus rafaelsensis* vs *A. linifolius*



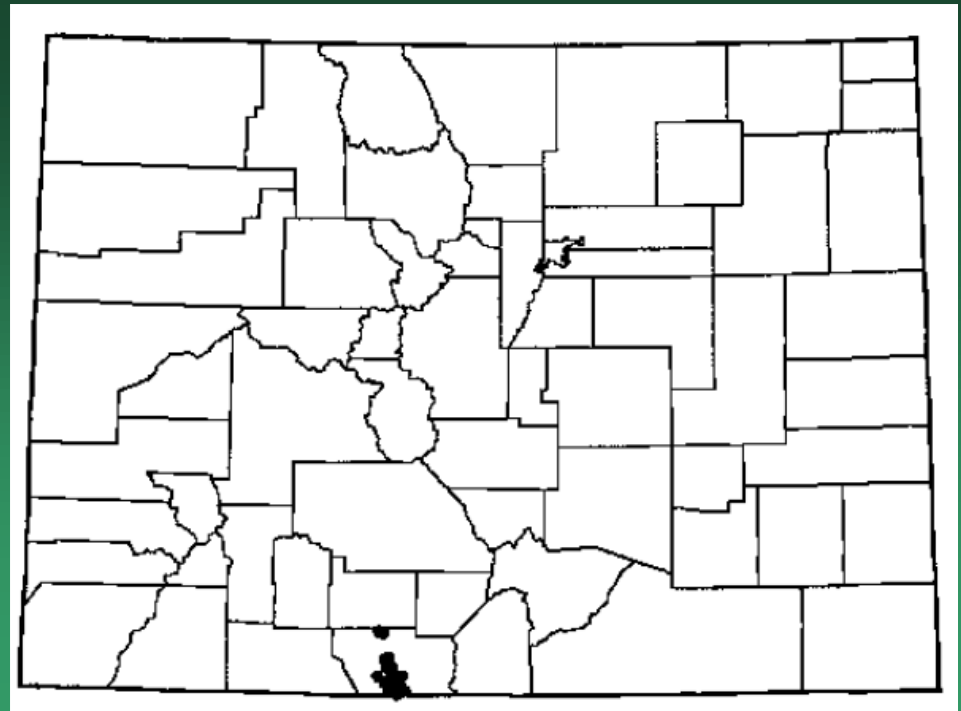
*Astragalus rafaensis*





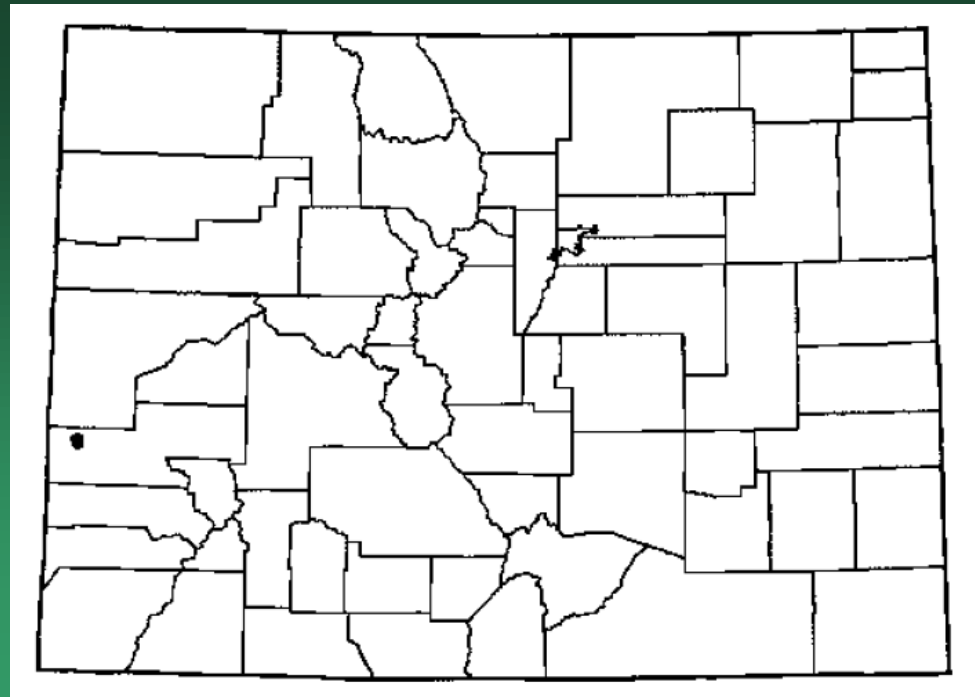
*Astragalus linifolius*

*Astragalus ripleyi*  
Ripley milkvetch



Reviewed under USFS Sensitive Species

*Astragalus sesquiflorus*  
Sandstone milkvetch



- Federal status: BLM sensitive
- Heritage ranks: G3G4/S1
- Global distribution: Arizona, Utah and Colorado (Montrose county)
- Elevation range: 5,000 – 5,500 ft.
- Colorado occurrences: 6 (3 are historical)
- Primary threats: grazing

*Astragalus sesquiflorus*

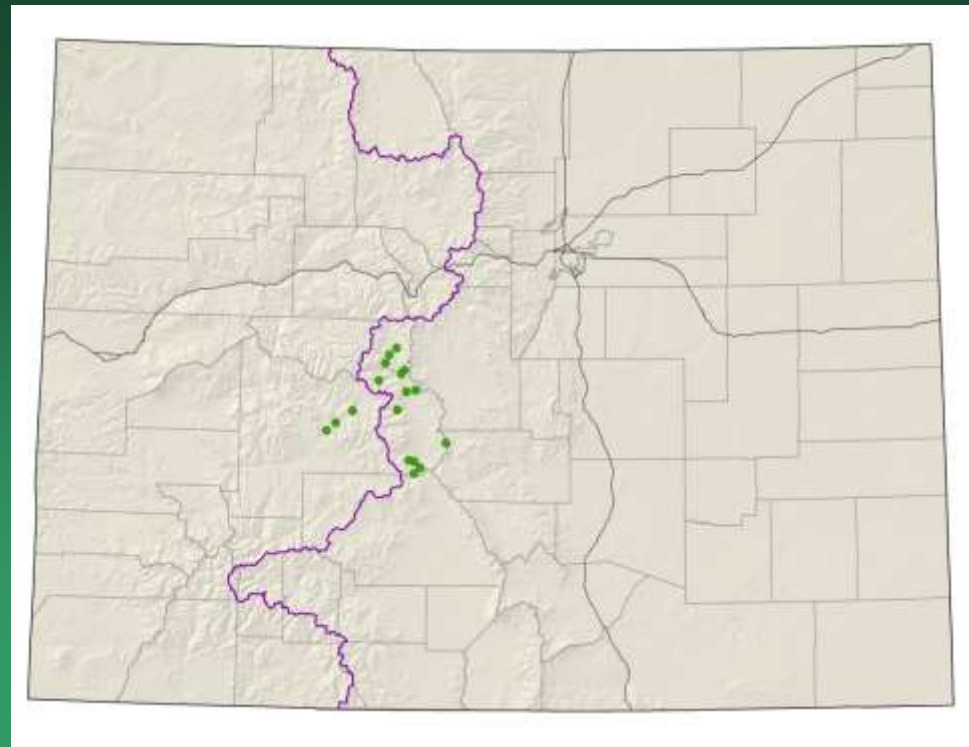


© B. Jennings



© N. Lederer

*Boechera crandallii*  
= *Arabis crandallii*  
Crandall's rockcress



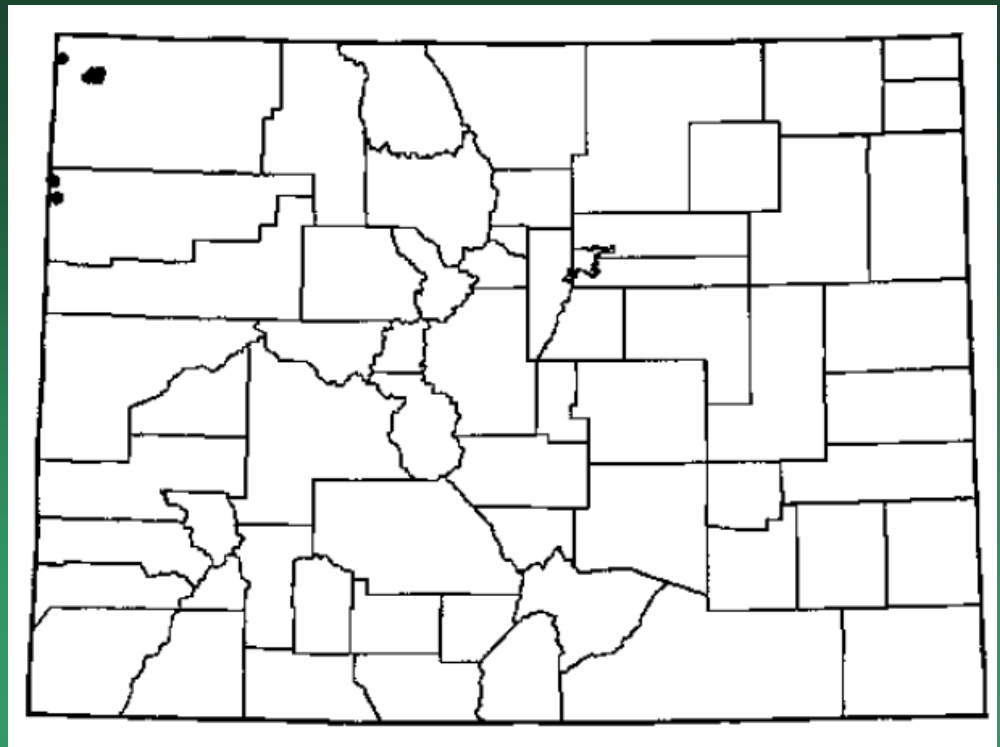
- Federal status: BLM sensitive
- Heritage ranks: G2/S2
- Global distribution: Wyoming and Colorado (Gunnison, Chaffee, and Lake counties)
- Elevation range: 8,175-10,600 ft.
- Last observed in Colorado: 2015
- Colorado occurrences: 17
- Colorado individuals:
- Primary threats: habitat loss/degradation, road construction
- Land ownership/management: BLM, state, private, USFS

*Boechea crandallii*





*Bolophyta ligulata*  
(=*Parthenium ligulatum*)  
Ligulate feverfew

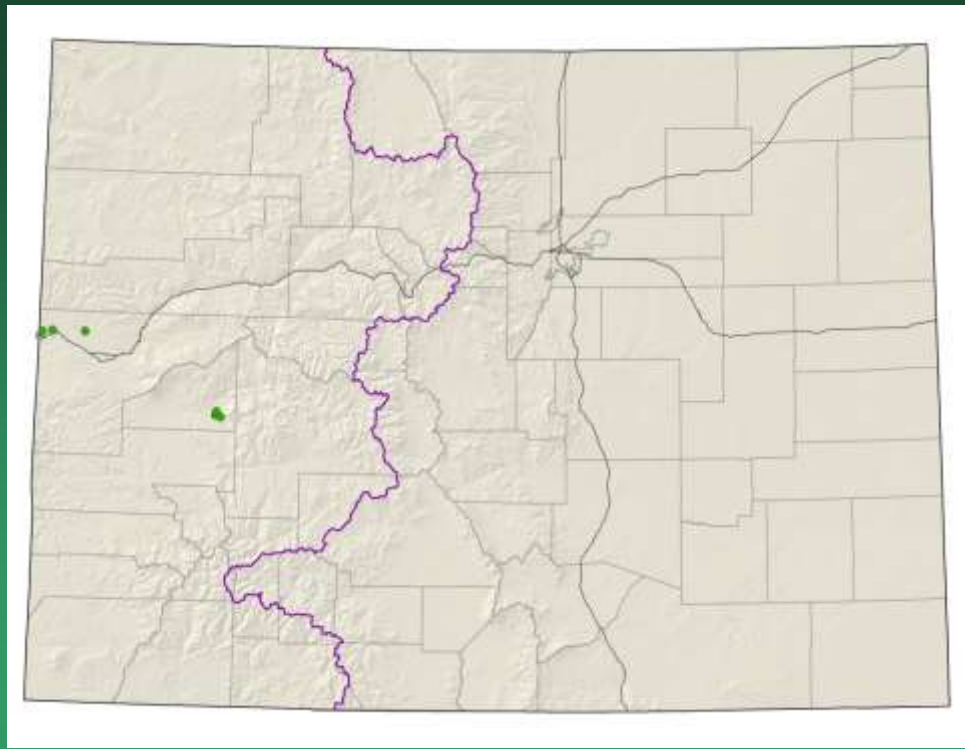


- Federal status: BLM sensitive
- Heritage ranks: G3/S2
- Global distribution: Utah and Colorado (Rio Blanco and Moffat counties)
- Elevation range: 5,400 – 6,500 ft.
- Colorado occurrences: 10 (7 are historical)
- Primary threats: grazing, off-road vehicle use, and trampling
-

*Bolophyta ligulata*



*Camissonia eastwoodiae*  
Eastwood evening  
primrose

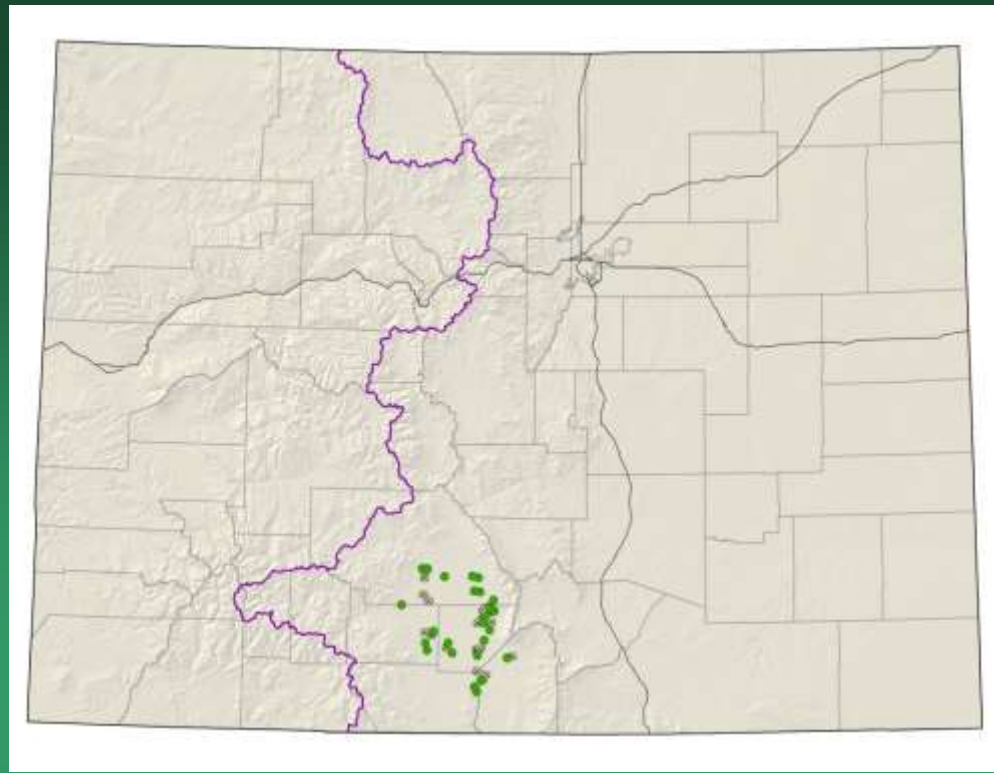


- Federal status: BLM sensitive
- Heritage ranks: G2/S1
- Global distribution: Utah and Colorado (Delta and Mesa counties)
- Elevation range: 4,560-6,050 ft.
- Last observed in Colorado: 2016
- Colorado occurrences: 7 (1 is historical)
- Colorado individuals: several thousand
- Primary threats: unknown
- Land ownership/management: BLM, private

*Camissonia eastwoodiae*

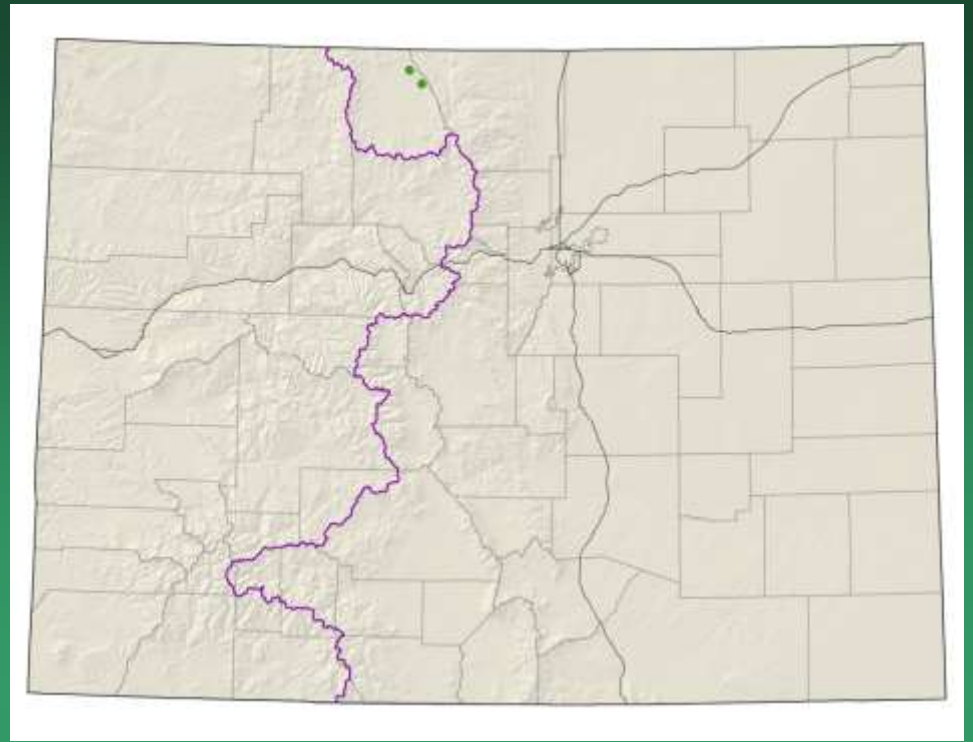


*Cleome multicaulis*  
(=*Peritoma multicaulis*)  
Many-stemmed spider-  
flower



Reviewed under SE & Central Colorado  
G2G3 Species

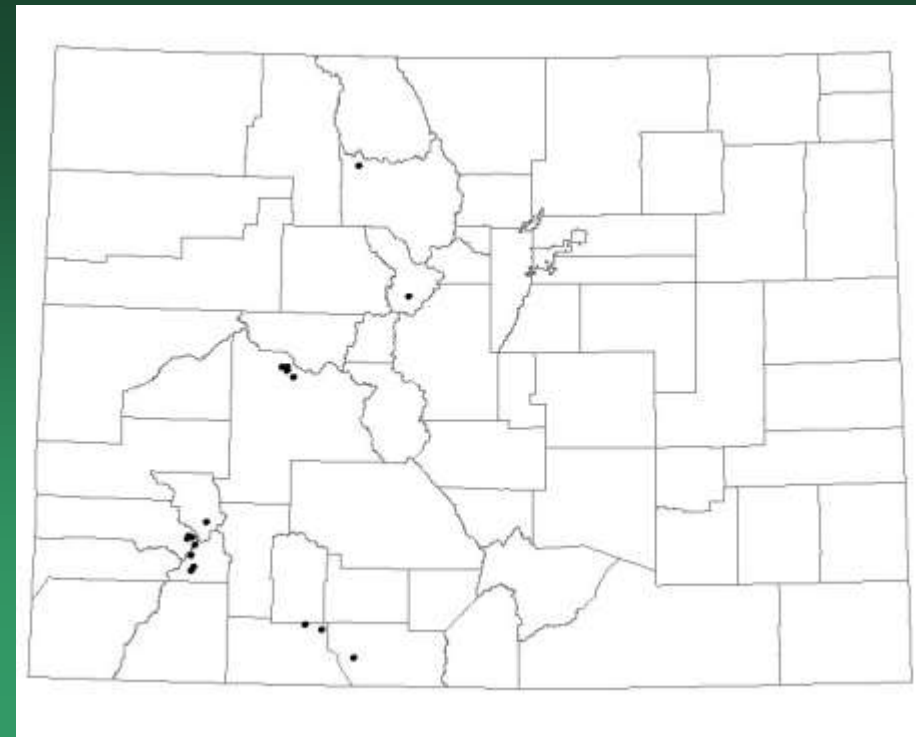
*Corispermum navicula*  
Crescent bugseed



Reviewed under Colorado T, E & C Plant Species

# *Cryptogramma stelleri*

## Slender rock-brake



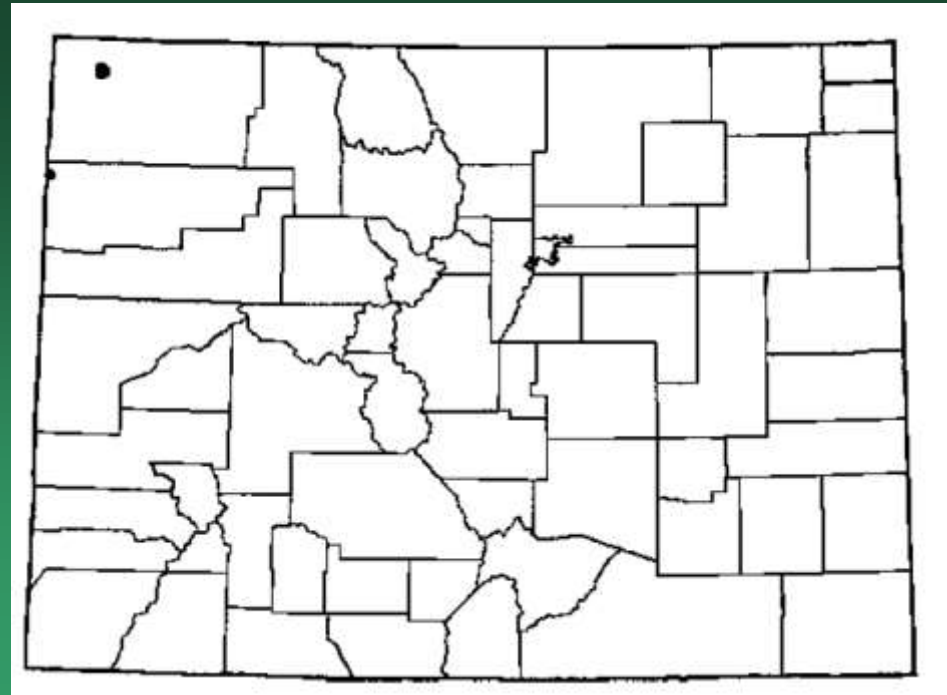
- Federal status: BLM sensitive
- Heritage ranks: G5/S2
- Global distribution: Europe, Asia, Alaska, Canada Oregon, Montana, Iowa, Michigan, West Virginia, Wyoming, New Mexico, and Colorado (San Juan, Archuleta, Grand, Gunnison, Conejos, San Miguel, Summit, Garfield, and Ouray counties)
- Elevation range: 7,820 – 13,450 ft.
- Occurrences: 18 (7 are historical)
- Primary threats: changes in hydrology

*Cryptogramma stelleri*





*Cymopterus duchesnensis*  
Uinta Basin spring-parsley

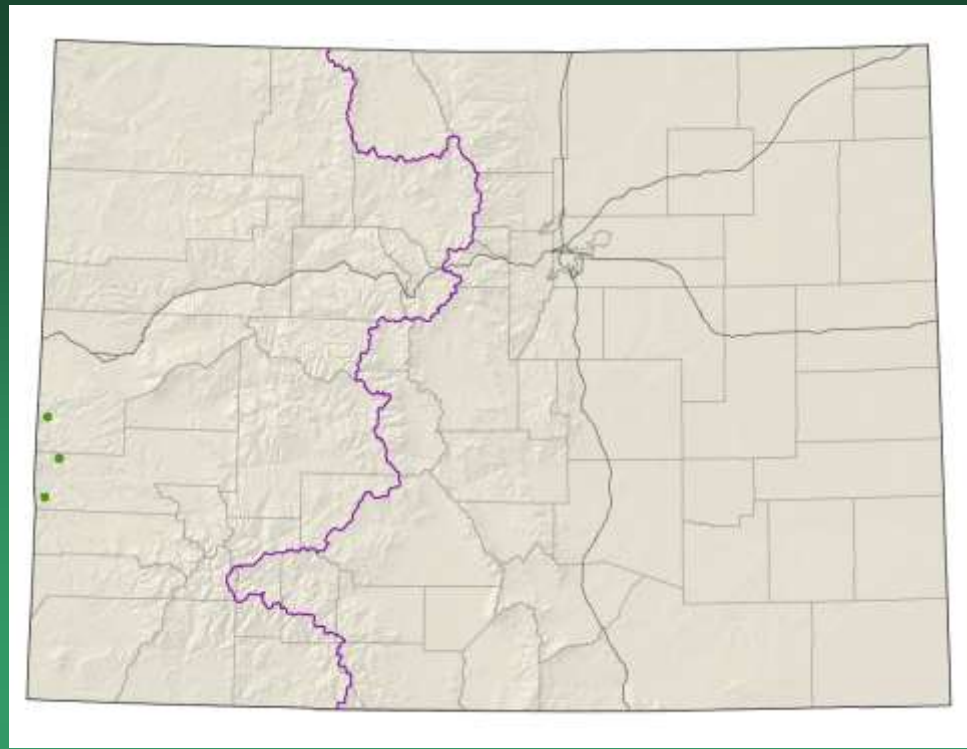


- Federal status: BLM sensitive
- Heritage ranks: G3/S1
- Global distribution: Utah and Colorado (Moffat and Rio Blanco counties)
- Elevation range: 4,700 – 6,800 ft.
- Colorado occurrences: 4 (all are historical)
- Primary threats: grazing, oil and gas development, roads, and ATV activity



*Cymopterus duchesnensis*

# *Erigeron kachinensis* kachina daisy

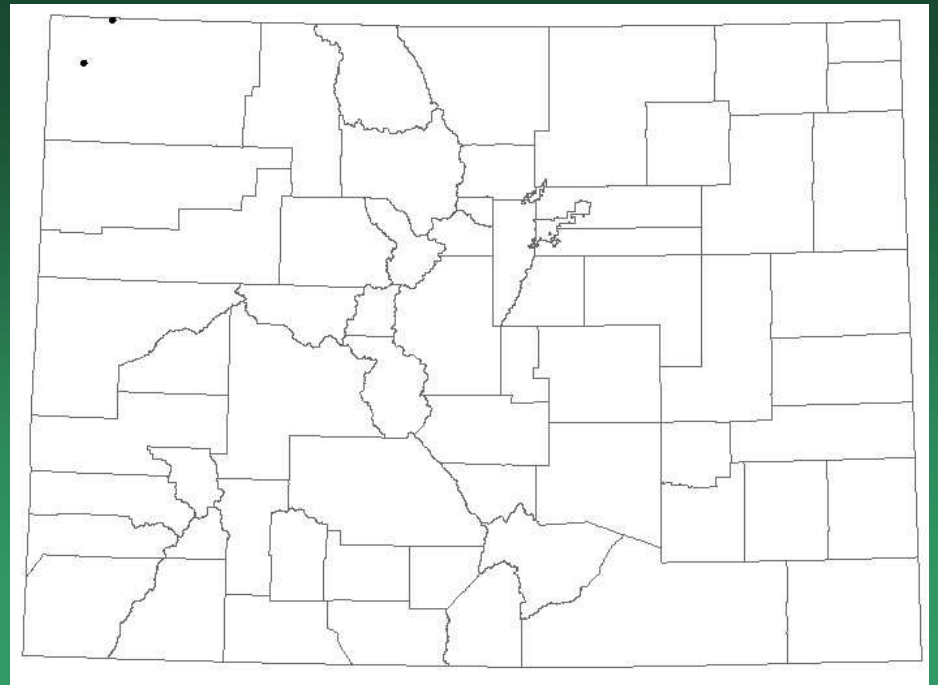


- Federal status: BLM sensitive
- Heritage ranks: G2/S1
- Global distribution: Utah and Colorado (Montrose county)
- Elevation range: 4,700-6,650 ft.
- Last observed in Colorado: 2010
- Colorado occurrences: 3
- Colorado individuals: est. 7,600
- Primary threats: mining, energy development, or water projects could affect water supplies to habitat
- Land ownership/management: BLM



*Erigeron kachinensis*

*Eriogonum acaule*  
Single-stemmed wild  
buckwheat

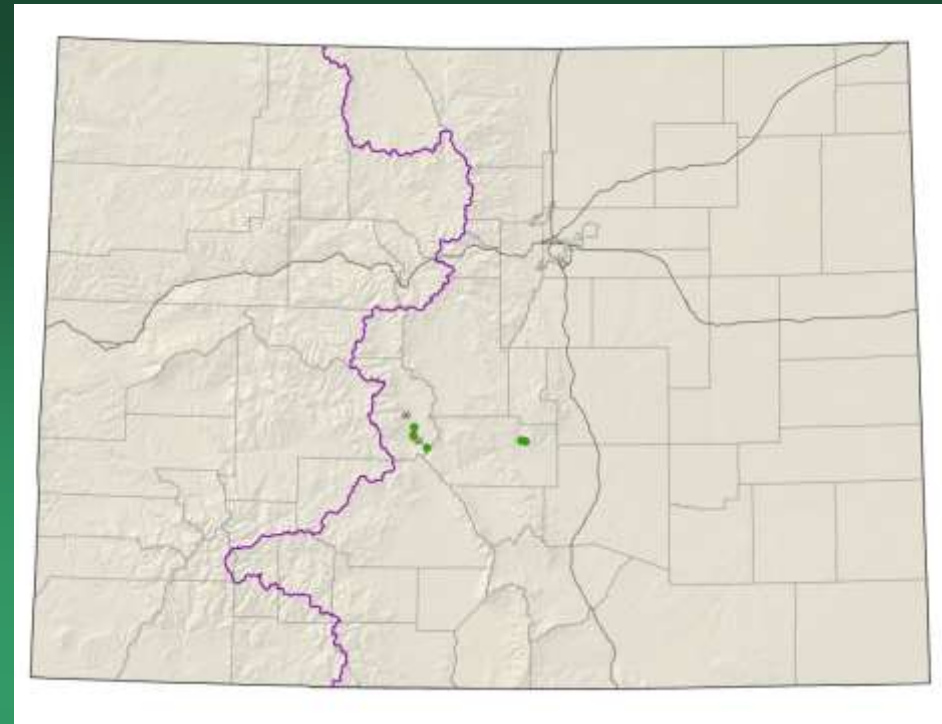


- Federal status: BLM sensitive
- Heritage ranks: G3/S1
- Global distribution: Wyoming and Colorado (Moffat County)
- Elevation range: 5,680 – 6,850 ft.
- Colorado occurrences: 2 (historical)
- Primary threats: off-road vehicles and road development



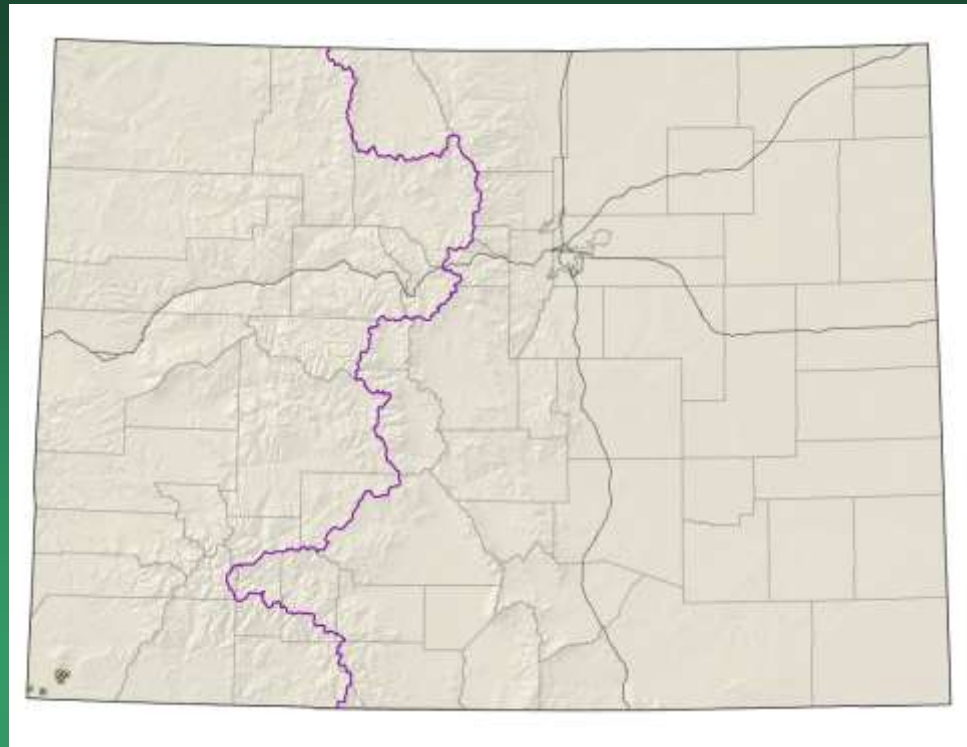
*Eriogonum acaule*

*Eriogonum brandegeei*  
Brandegee's buckwheat



Reviewed under Colorado T, E & C Plant Species

# *Eriogonum clavellatum* Comb Wash buckwheat



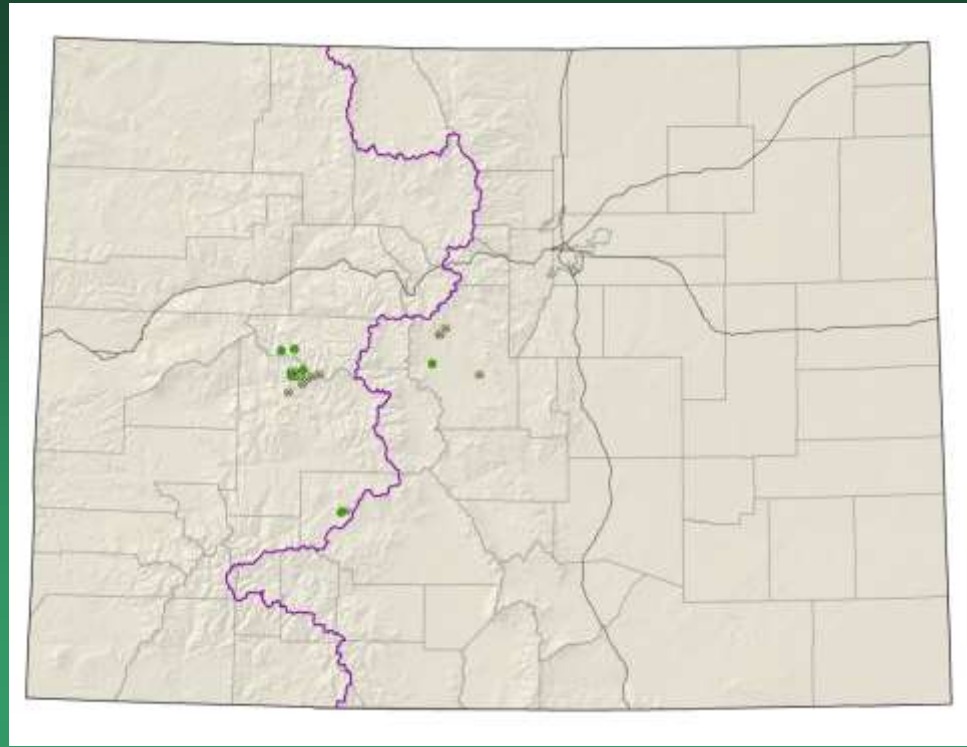
- Federal status: BLM sensitive
- Heritage ranks: G2/S1
- Global distribution: Utah and Colorado (Montezuma County)
- Elevation range: 4,800-6,030 ft.
- Last observed in Colorado: 1990
- Colorado occurrences: 8 (all are historical)
- Colorado individuals: unknown
- Primary threats: road construction, exploration for oil and gas, and a proposed system of irrigation canals on the Reservation
- Land ownership/management: Tribal



*Eriogonum clavellatum*



# *Eriogonum coloradense* Colorado wild buckwheat

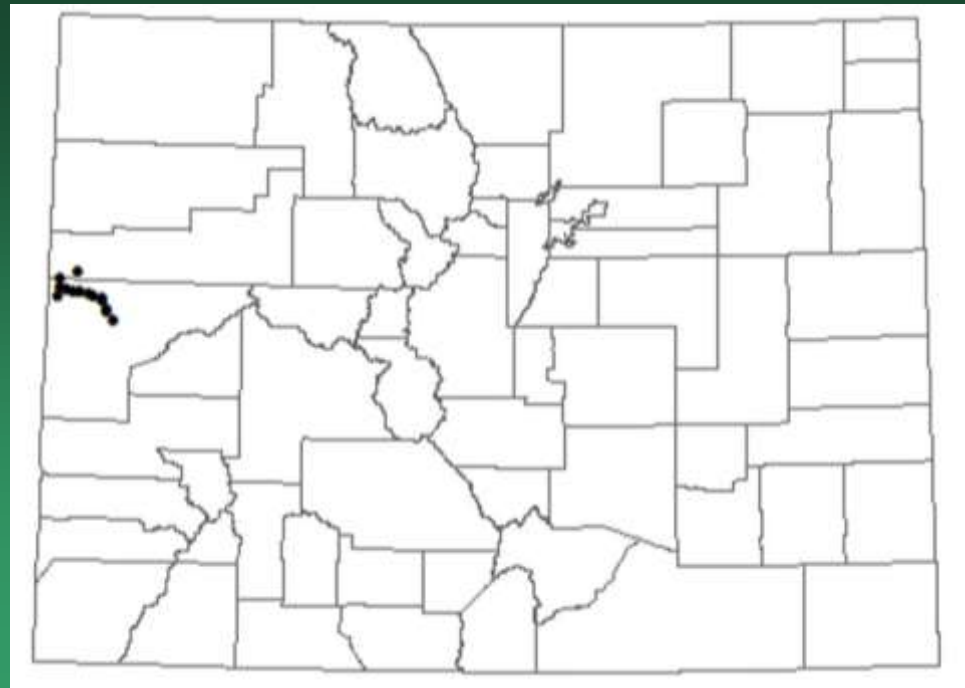


- Federal status: BLM sensitive
- Heritage ranks: G2/S2
- Global distribution: Colorado endemic (Gunnison, Park, Pitkin, and Saguache counties)
- Elevation range: 8,700-14,260 ft.
- Last observed in Colorado: 2017
- Colorado occurrences: 22 (13 are historical)
- Colorado individuals: ~5000
- Primary threats: recreation
- Land ownership/management: BLM, local government, state, private, USFS

*Eriogonum coloradense*



*Eriogonum contortum*  
Grand buckwheat

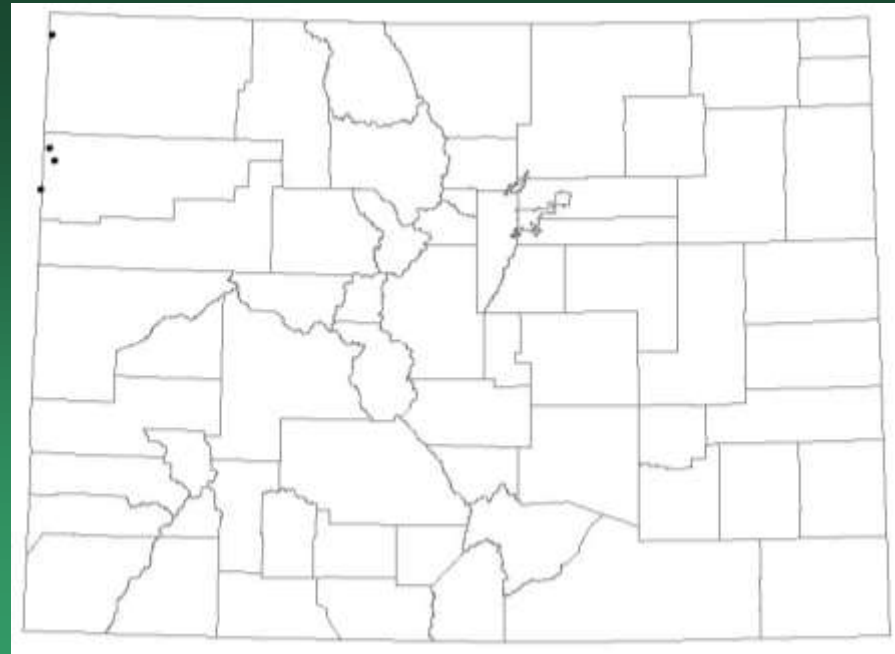


- Federal status: BLM sensitive
- Heritage ranks: G3/S1
- Global distribution: Utah and Colorado (Mesa and Garfield counties)
- Elevation range: 4,560 – 5,550 ft.
- Colorado occurrences: 15 (9 are historical)
- Colorado individuals: estimate 132,600
- Primary threats: motorized recreation, grazing, road construction, and invasive weeds



*Eriogonum contortum*

*Eriogonum ephedroides*  
Ephedra buckwheat

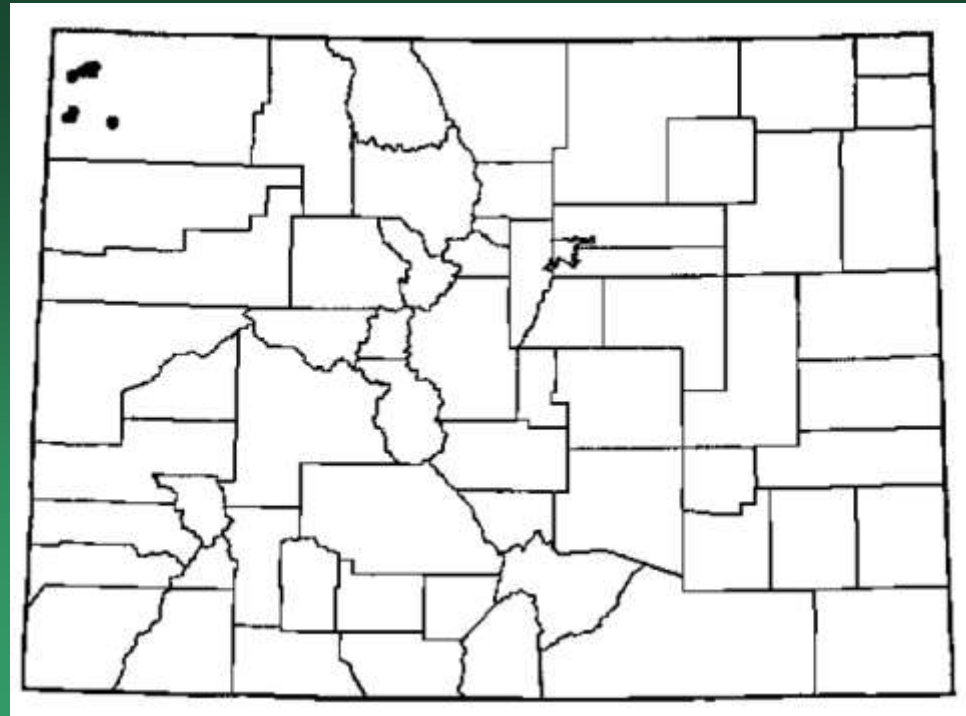


- Federal status: BLM sensitive
- Heritage ranks: G3/S1
- Global distribution: Utah and Colorado (Rio Blanco and Moffat counties)
- Elevation range: 5,300 – 6,100 ft.
- Colorado occurrences: 4 (1 is historical)
- Primary threats: off-road vehicle use, recreation, oil development and road construction

*Eriogonum ephedroides*



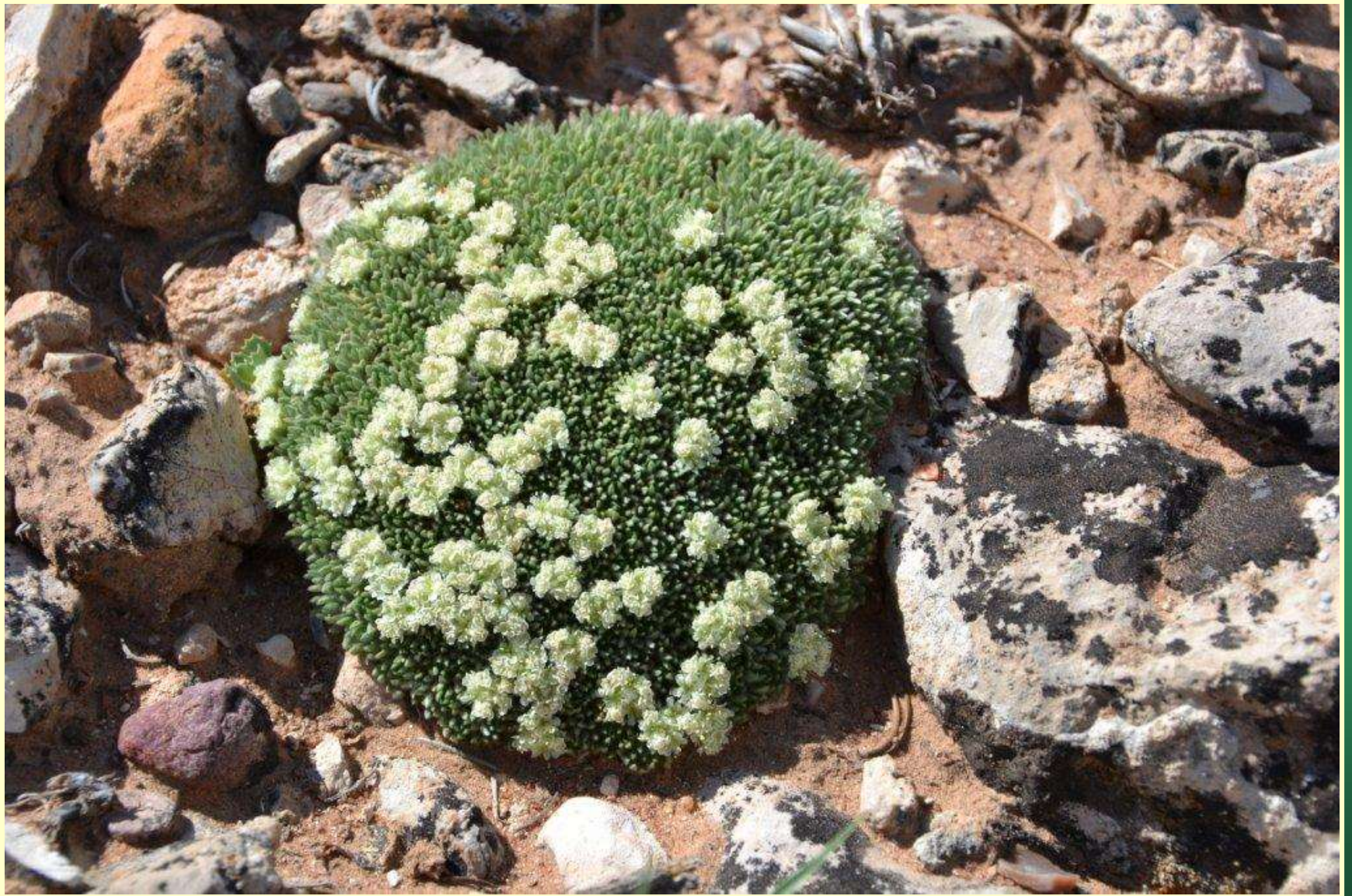
*Eriogonum tumulosum*  
Woodside buckwheat



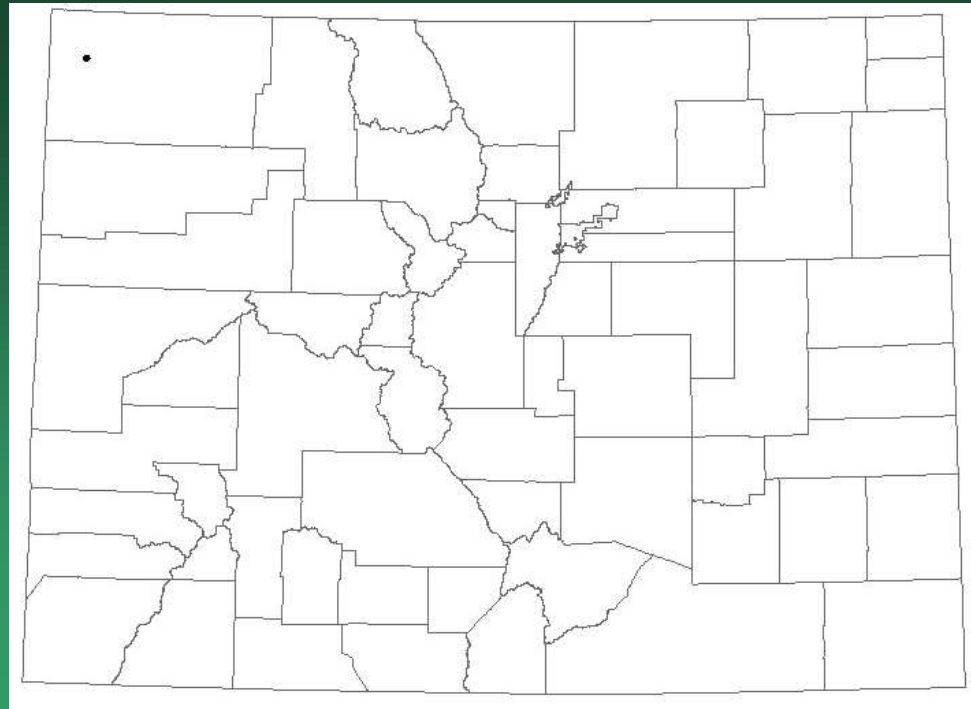
- Federal status: BLM sensitive
- Heritage ranks: G3Q/S2
- Global distribution: Utah and Colorado (Moffat County)
- Elevation range: 5,800 – 6,300 ft.
- Colorado occurrences: 12 (9 are historical)
- Primary threats: grazing and invasion of cheat grass
-



*Eriogonum tumulosum*



*Eriogonum viridulum*  
Clay hill buckwheat



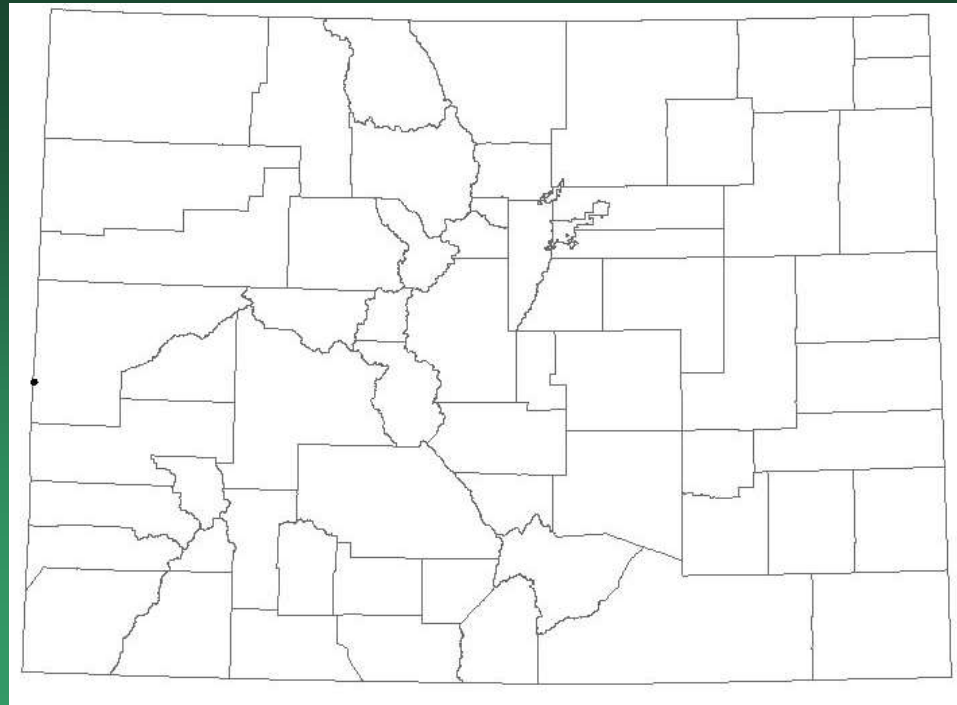
- Federal status: BLM sensitive
- Heritage ranks: G4Q/SH
- Global distribution: Utah, Arizona and Colorado (Moffat County)
- Elevation range: 5,570 – 6,000 ft.
- Colorado occurrences: 1 (historical)
- Primary threats: unknown



*Eriogonum viridulum*



*Frasera paniculata*  
Tufted green gentian



- Federal status: BLM sensitive
- Heritage ranks: G4/S1
- Global distribution: Arizona, Nevada, Utah, New Mexico, and Colorado (Mesa County)
- Elevation range: 4,470 – 4,870 ft.
- Colorado occurrences: 1 (historical)
- Primary threats: unknown

*Frasera paniculata*



*Gentianella tortuosa*  
Cathedral Bluff dwarf  
gentian

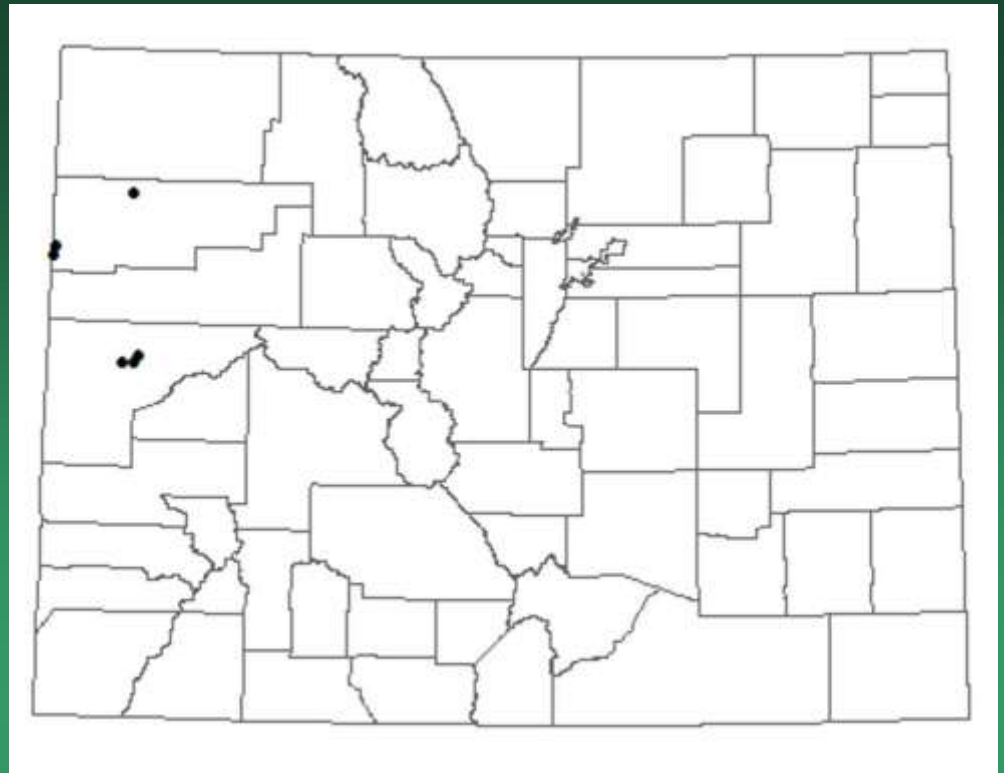


- Federal status: BLM sensitive
- Heritage ranks: G3?/S1
- Global distribution: Utah, Nevada, and Colorado (Rio Blanco County)
- Elevation range: 7,785 – 8,600 ft.
- Colorado occurrences: 3 (1 historical)
- Primary threats: oil and gas development, road maintenance

*Gentianella tortuosa*



*Gilia stenothyrsa*  
Uinta Basin gilia



- Federal status: BLM sensitive
- Heritage ranks: G3/S1
- Global distribution: Utah and Colorado (Mesa and Rio Blanco counties)
- Elevation range: 4,800 – 6,400 ft.
- Colorado occurrences: 6 (1 is historical)
- Primary threats: oil and gas development, sheep grazing



*Gilia stenothyrsa*

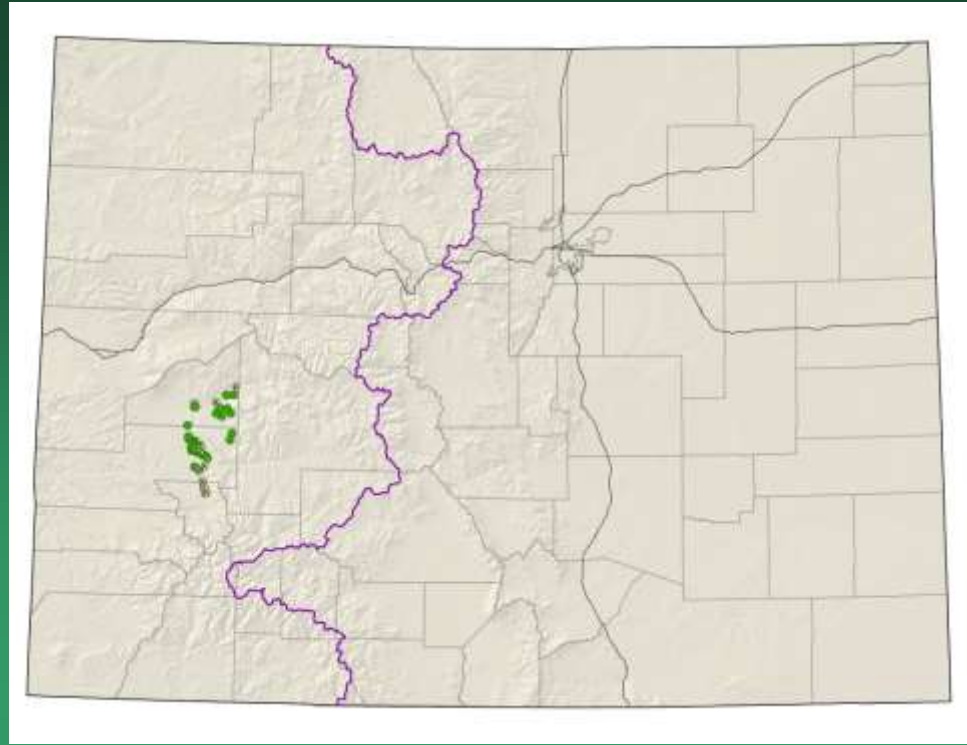


*Gutierrezia elegans*  
Lone Mesa  
snakeweed



Reviewed under Colorado G1 Species

# *Lomatium concinnum* Colorado desert-parsley

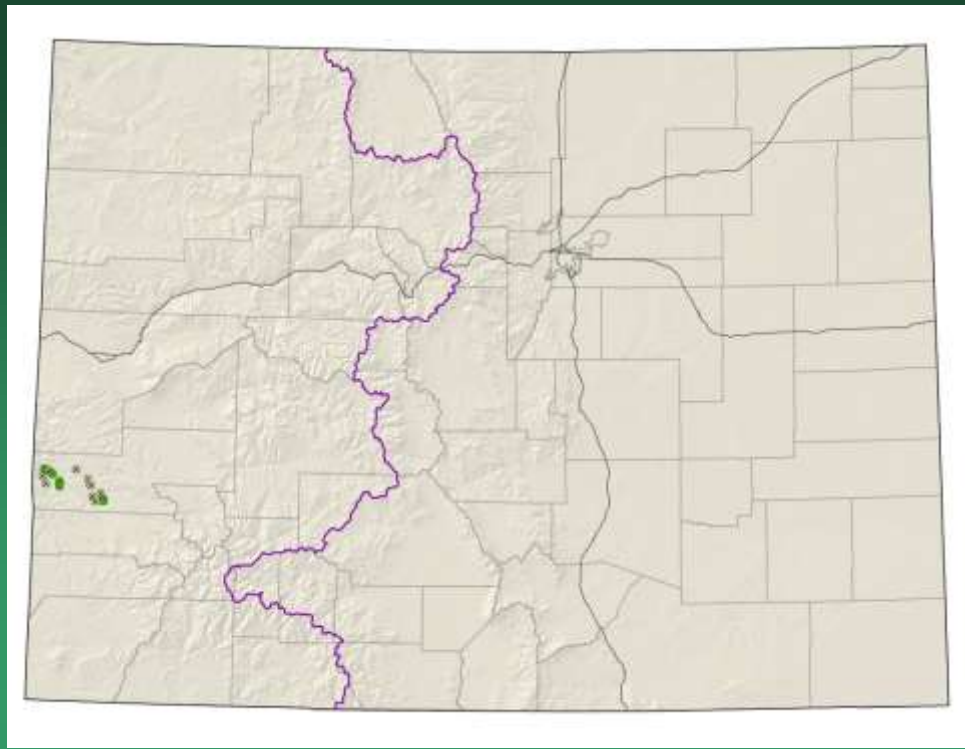


- Federal status: BLM sensitive
- Heritage ranks: G2G3/S2S3
- Global distribution: Colorado endemic (Delta, Montrose, and Ouray counties)
- Elevation range: 5,160-8,800 ft.
- Last observed in Colorado: 2016
- Colorado occurrences: 41 (13 are historical)
- Colorado individuals: >70,000
- Primary threats: Motorized recreation
- Land ownership/management: BLM, state, private, USFS



*Lomatium concinnum*

# *Lupinus crassus* Payson lupine

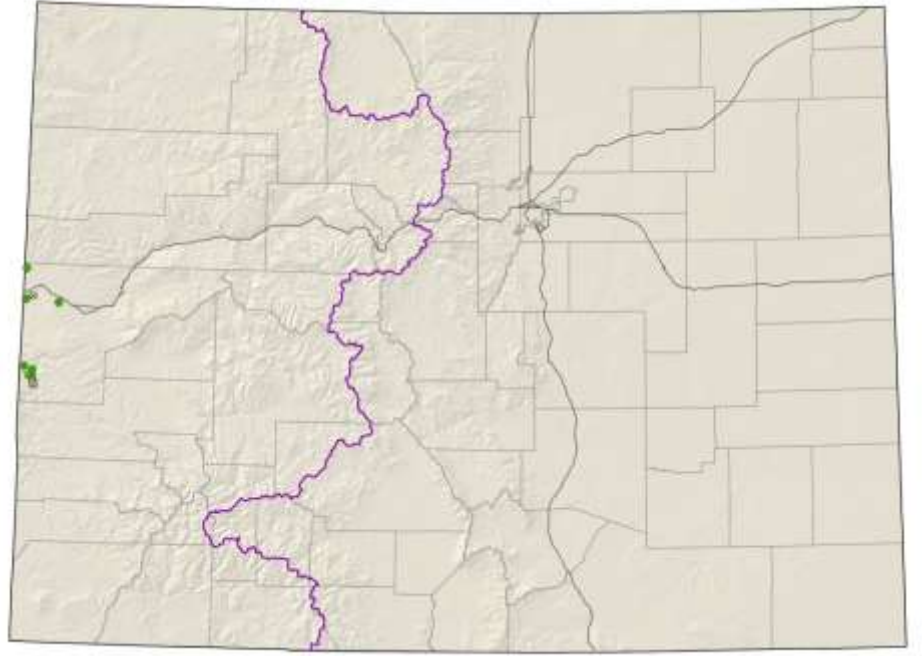


- Federal status: BLM sensitive
- Heritage ranks: G2/S2
- Global distribution: Colorado endemic (Montrose county)
- Elevation range: 5,070-6,260 ft.
- Last observed in Colorado: 2016
- Colorado occurrences: 18 (12 are historical)
- Colorado individuals: >100,000
- Primary threats: Incompatible grazing
- Land ownership/management: BLM, private

*Lupinus crassus*



*Lygodesmia doloresensis*  
Dolores River  
skeletonplant



Reviewed under Colorado G1 Species

*Mimulus eastwoodiae*  
Eastwood monkey-flower



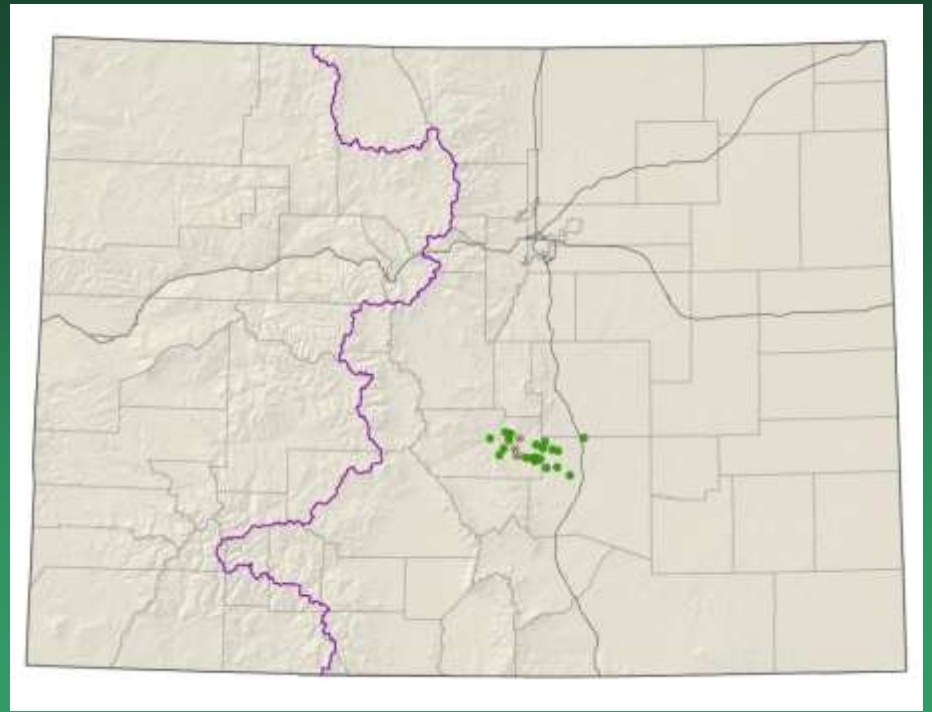
- Federal status: BLM sensitive
- Heritage ranks: G3G4/S1S2
- Global distribution: Arizona, New Mexico and Colorado (Delta, Mesa, Montrose, Montezuma, and San Miguel counties)
- Elevation range: 4,650 – 6,400 ft.
- Colorado occurrences: 11 (3 historical)
- Primary threats: hydrological alteration





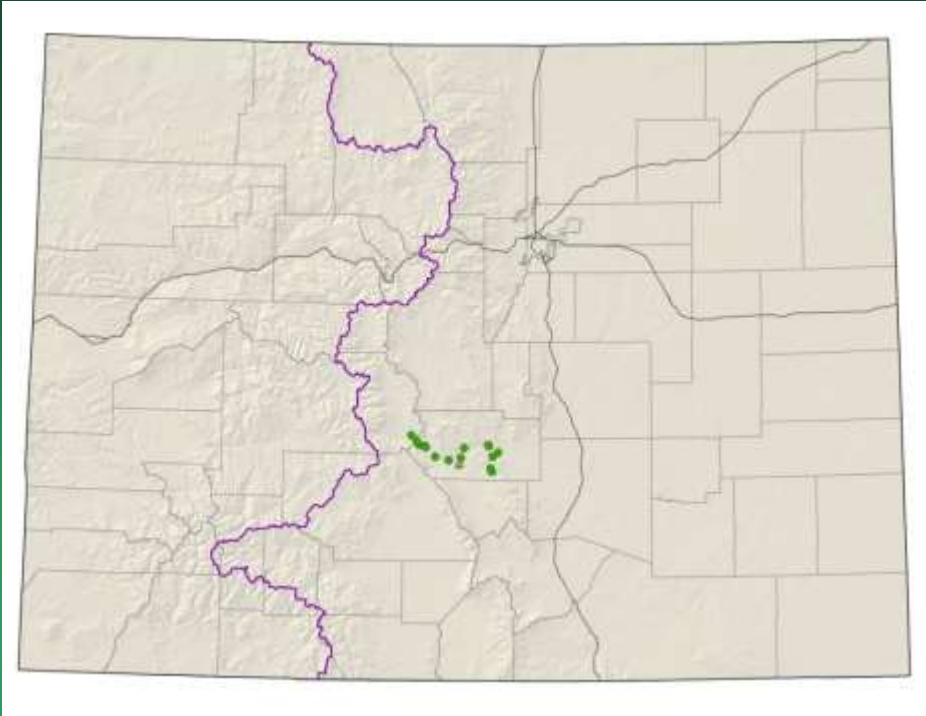
*Mimulus eastwoodiae*

*Nuttallia chrysantha*  
= *Mentzelia chrysantha*  
Golden blazing star



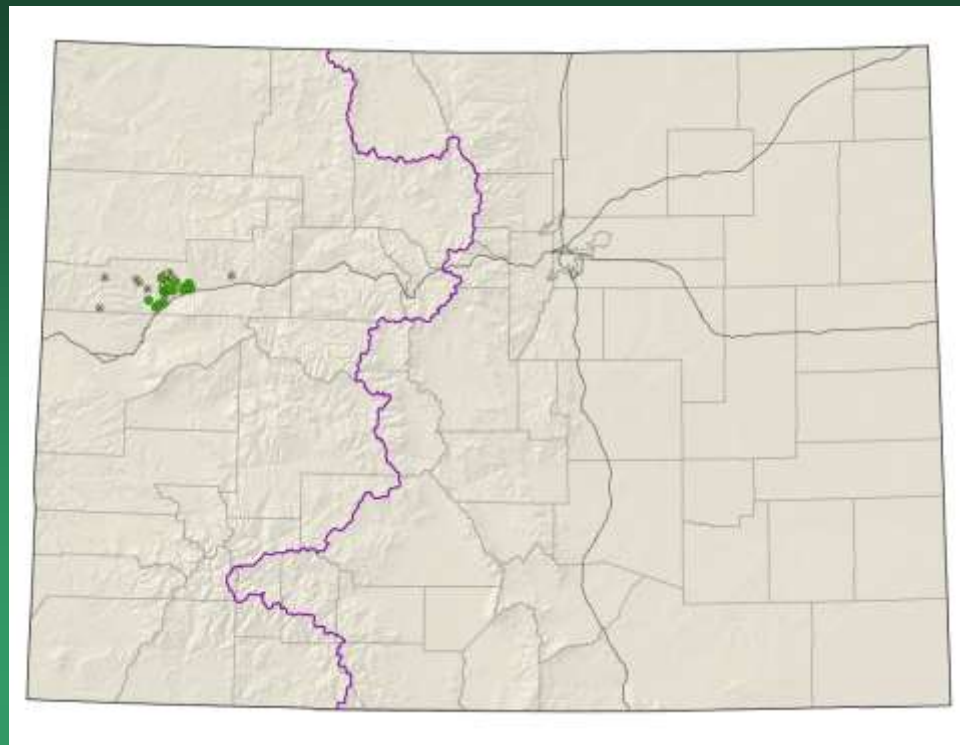
Reviewed under SE & Central Colorado  
G2G3 Species

*Nuttallia densa*  
= *Mentzelia densa*  
Arkansas Canyon  
stickleaf



Reviewed under SE & Central Colorado  
G2G3 Species

*Nuttallia (Mentzelia)*  
*rhizomata*  
Roan Cliffs blazing star

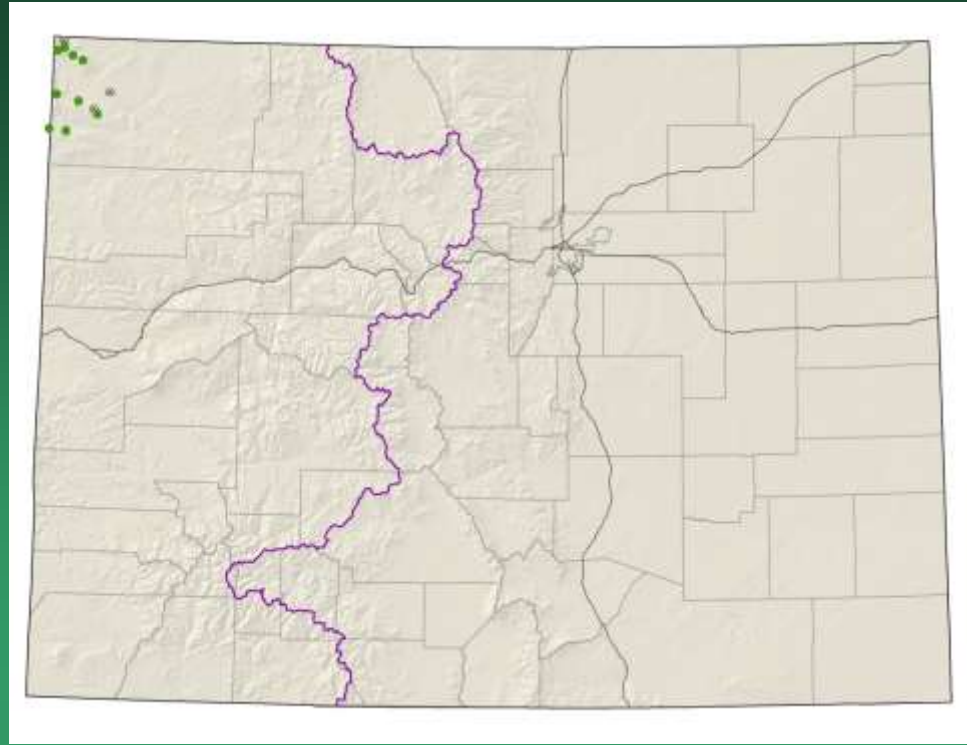


- Federal status: BLM sensitive
- Heritage ranks: G2/S2
- Global distribution: Colorado endemic ( Rio Blanco County)
- Elevation range: 5,250-9,190 ft.
- Last observed in Colorado: 2017
- Colorado occurrences: 24 (9 are historical)
- Colorado individuals: >24,500
- Primary threats: Oil shale mining and oil and gas development
- Land ownership/management: BLM, private

*Nuttallia rhizomata*



*Oenothera acutissima*  
narrow-leaf  
evening-primrose

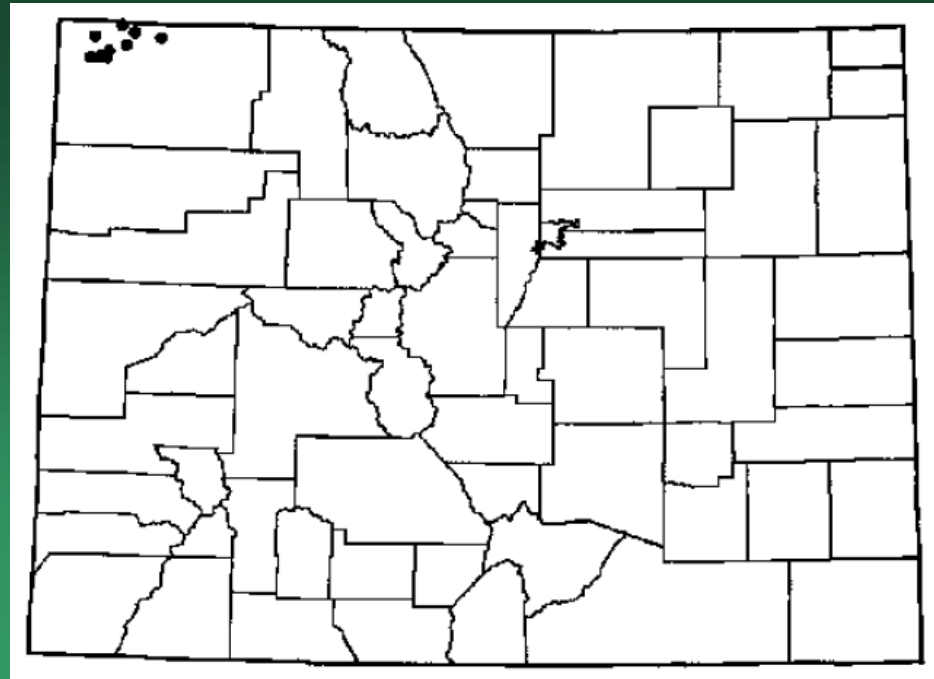


- Federal status: BLM sensitive
- Heritage ranks: G2/S2
- Global distribution: Utah and Colorado (Moffat County)
- Elevation range: 5,300-9,100 ft.
- Last observed in Colorado: 2013
- Colorado occurrences: 14 (3 are historical)
- Colorado individuals: >4,000
- Primary threats: hydrologic alteration, habitat degradation from livestock use
- Land ownership/management: BLM, NPS, state, private

*Oenothera acutissima*



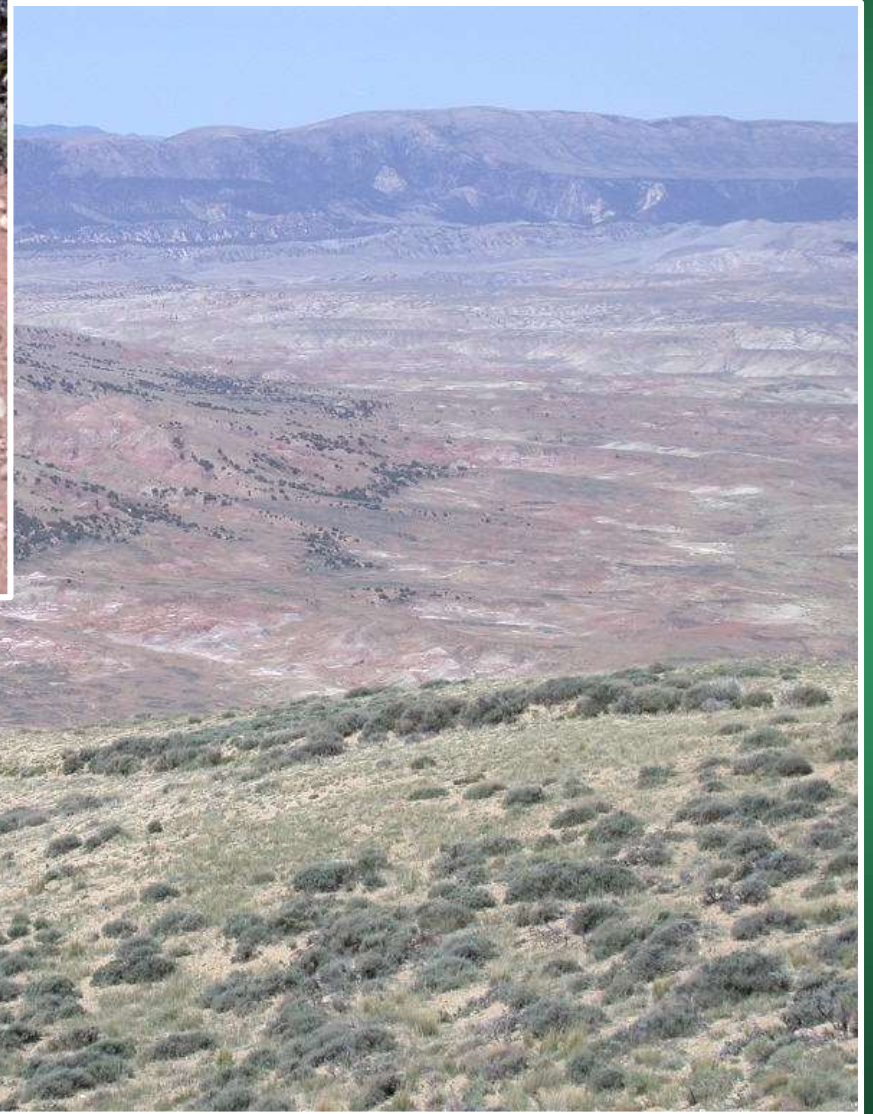
*Oreocarya caespitosa*  
(=*Cryptantha caespitosa*)  
Caespitose cat's-eye



- Federal status: BLM sensitive
- Heritage ranks: G4/S2
- Global distribution: Idaho, Wyoming, Utah and Colorado (Moffat and Rio Blanco)
- Elevation range: 6,200 – 8,100 ft.
- Colorado occurrences: 12 (9 historical)
- Primary threats: grazing



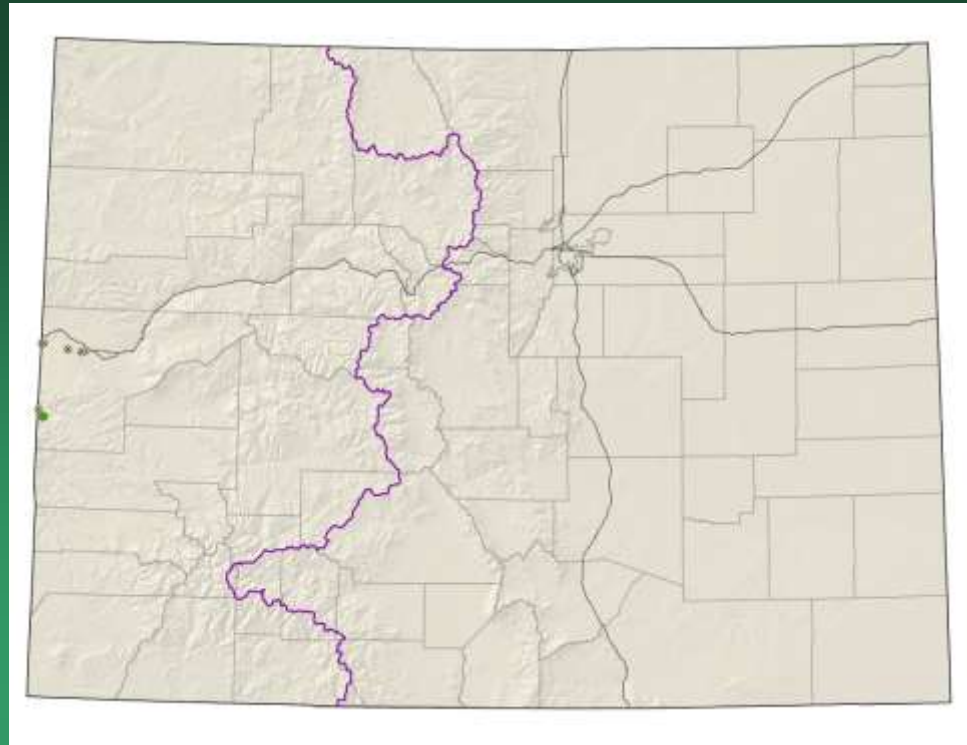
*Oreocarya caespitosa*



*Oreocarya osterhoutii*=  
*Cryptantha osterhoutii*  
Osterhout cat's-eye

Conservation Action Plan

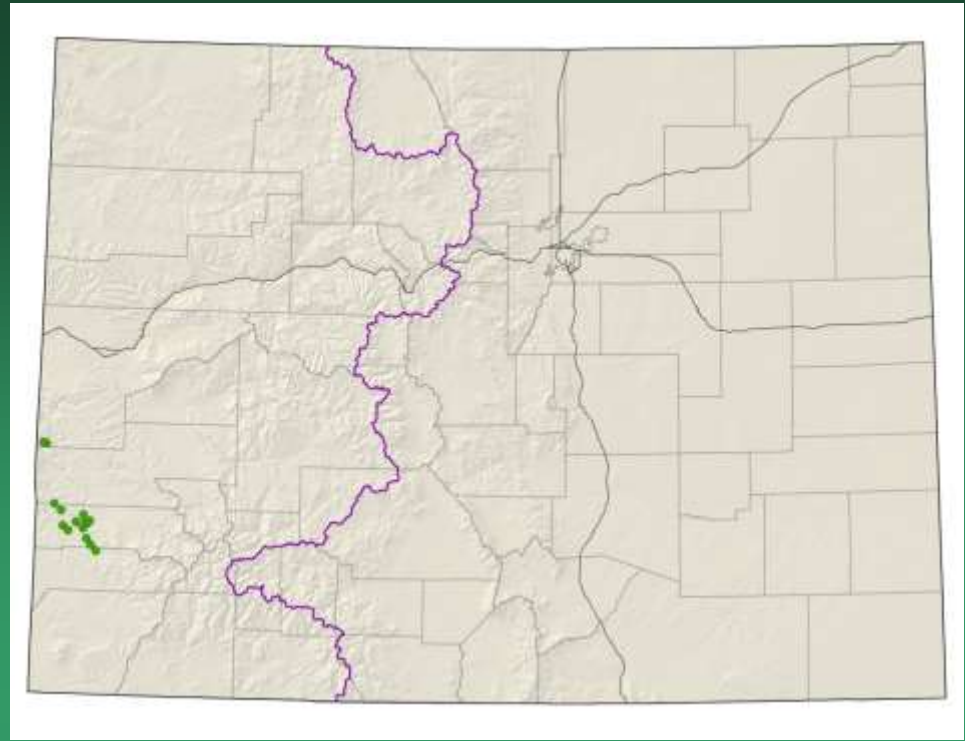
- Federal status: BLM sensitive
- Heritage ranks: G2G3/S2
- Global distribution: Utah and Colorado (Mesa County)
- Elevation range: 4,440-6,500 ft.
- Last observed in Colorado: 2011
- Colorado occurrences: 7 (5 are historical)
- Colorado individuals: ~1500?
- Primary threats: unknown
- Land ownership/management: BLM, NPS, private



*Oreocarya osterhoutii*

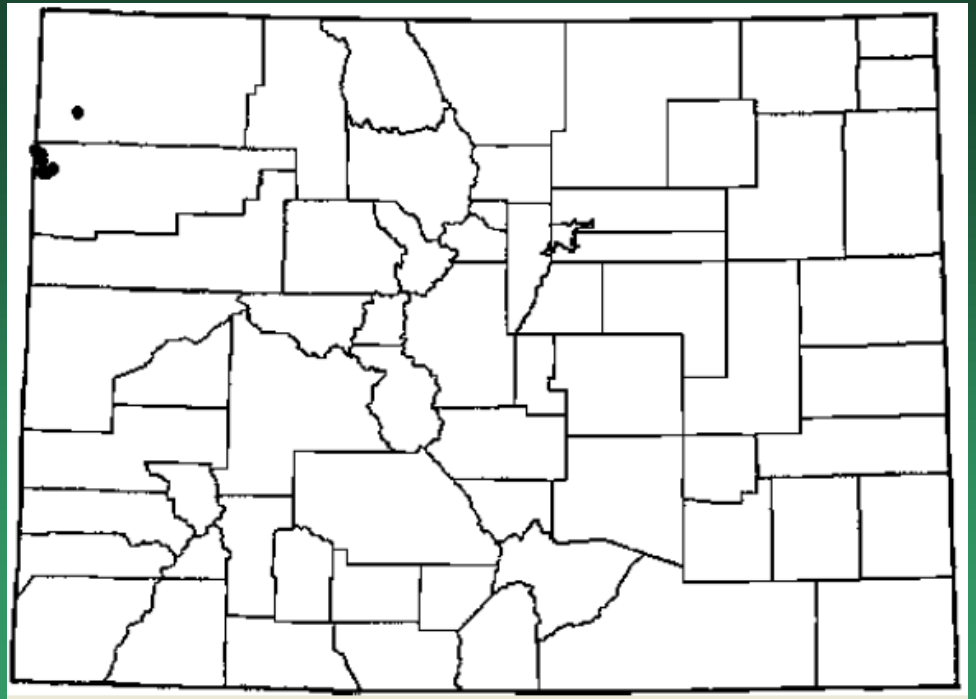


*Oreocarya revealii*=  
*Cryptantha gypsophila*  
Gypsum Valley Cat-eye



Reviewed under Colorado G1 Species

*Oreocarya rollinsii*  
(=*Cryptantha rollinsii*)  
Rollins' cat's-eye

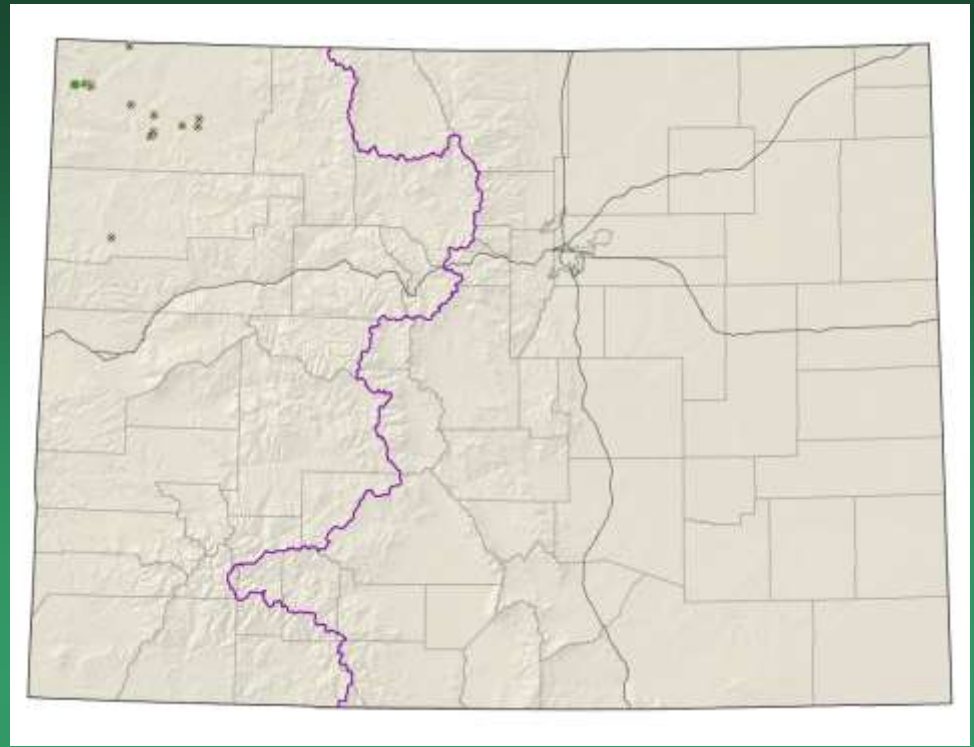


- Federal status: BLM Sensitive
- Heritage ranks: G3/S2
- Global distribution: Wyoming, Utah and Colorado (Moffat and Rio Blanco counties)
- Elevation range: 5,300 – 8,200 ft.
- Occurrences: 15 (6 historical)
- Primary threats: grazing, oil and gas development, roads, and ATV activity



*Oreocarya rollinsii*

*Oxytropis besseyi* var.  
*obnapiformis*  
Bessey's locoweed



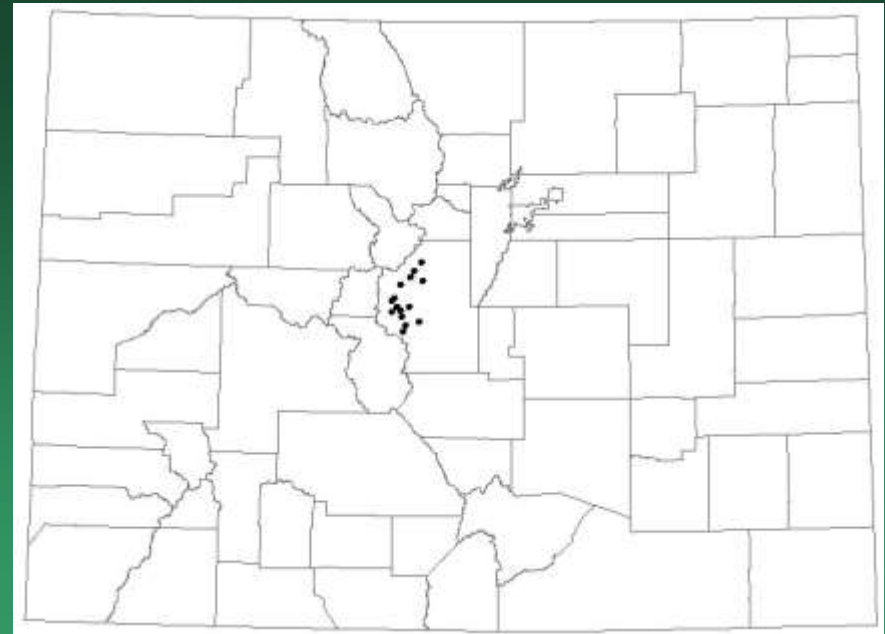
- Federal status: BLM sensitive
- Heritage ranks: G5T2/S2
- Global distribution: Utah, Wyoming, and Colorado (Moffat and Rio Blanco Cos.)
- Elevation range: 5,360-8,430 ft.
- Last observed in Colorado: 2017
- Colorado occurrences: 14 (13 are historical)
- Colorado individuals: unknown, perhaps in the 100s
- Primary threats: oil and gas development
- Land ownership/management: BLM, NPS, state, private

*Oxytropis besseyi* var. *obnapiformis*





*Packera pauciflora*  
Few-flowered ragwort

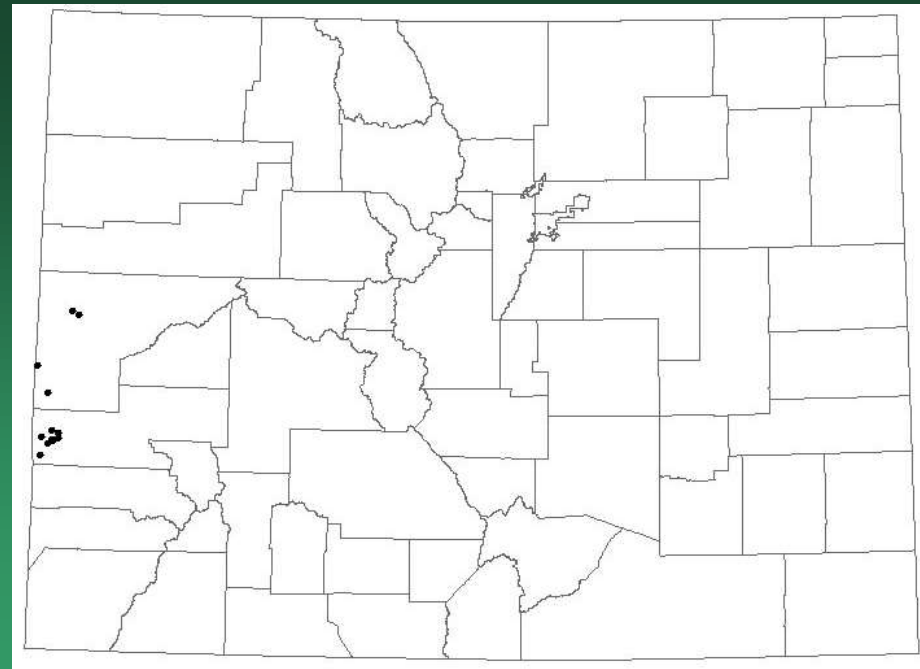


- Federal status: BLM sensitive
- Heritage ranks: G4G5/S1
- Global distribution: Alaska to Colorado (west), Upper Great Lakes to Newfoundland (east), and Colorado (Park County)
- Elevation range: 8,860 – 10,410 ft.
- Colorado occurrences: 18 (2 are historical)
- Primary threats: peat mining, alterations in hydrology, and residential development

*Packera pauciflora*



*Pediomelum aromaticum*  
Paradox breadroot

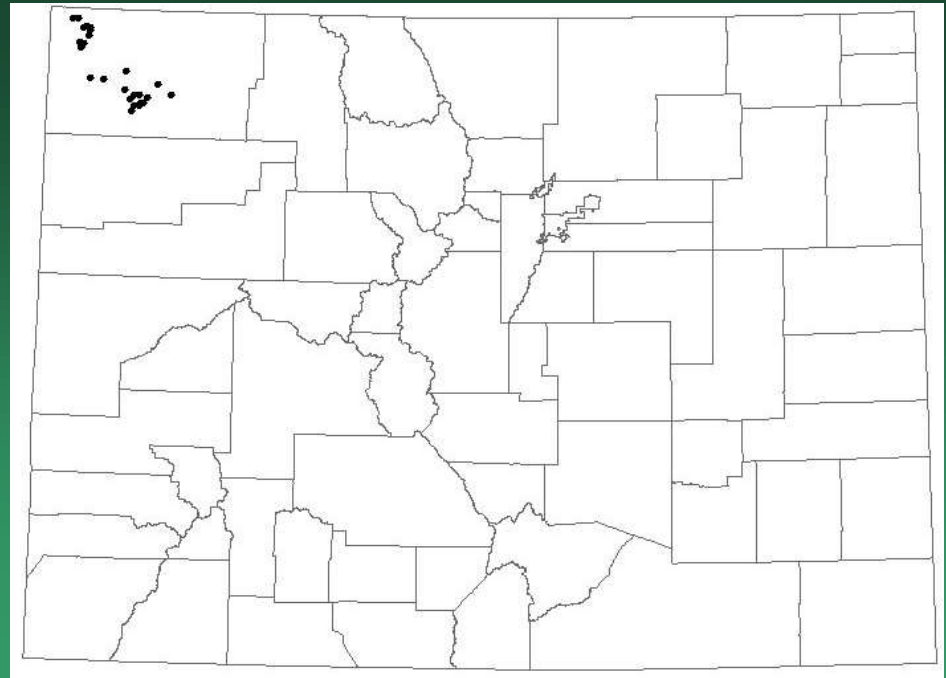


- Federal status: BLM sensitive
- Heritage ranks: G3/S2
- Global distribution: Arizona, Utah and Colorado (Mesa and Montrose counties)
- Elevation range: 4,620 – 6,700 ft.
- Colorado occurrences: 12 (9 are historical)
- Primary threats: grazing and recreation



*Pediomelum aromaticum*

*Penstemon acaulis* var.  
*yampaensis*  
Yampa beardtongue

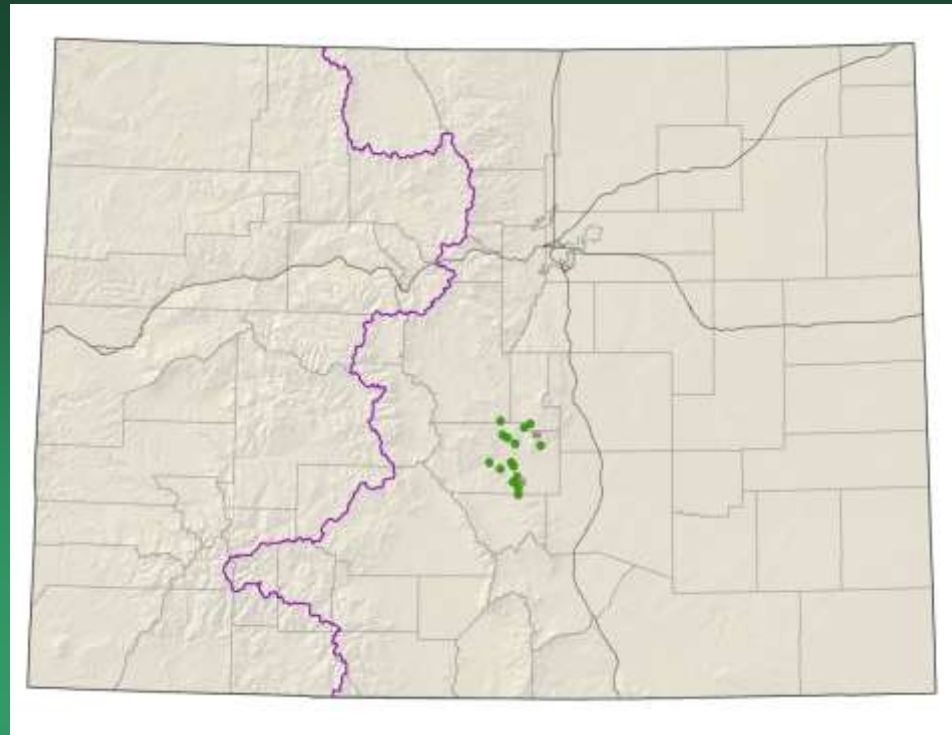


- Federal status: BLM sensitive
- Heritage ranks: G2/S2
- Global distribution: Utah and Colorado (Moffat)
- Elevation range: 5,600 – 8,300 ft.
- Colorado occurrences: 31 (22 historical)
- Primary threats: off-road vehicle use and competitive non-native plants

*Penstemon acaulis*  
var. *yampaensis*



*Penstemon degeneri*  
Degener beardtongue



Reviewed under SE & Central Colorado  
G2G3 Species

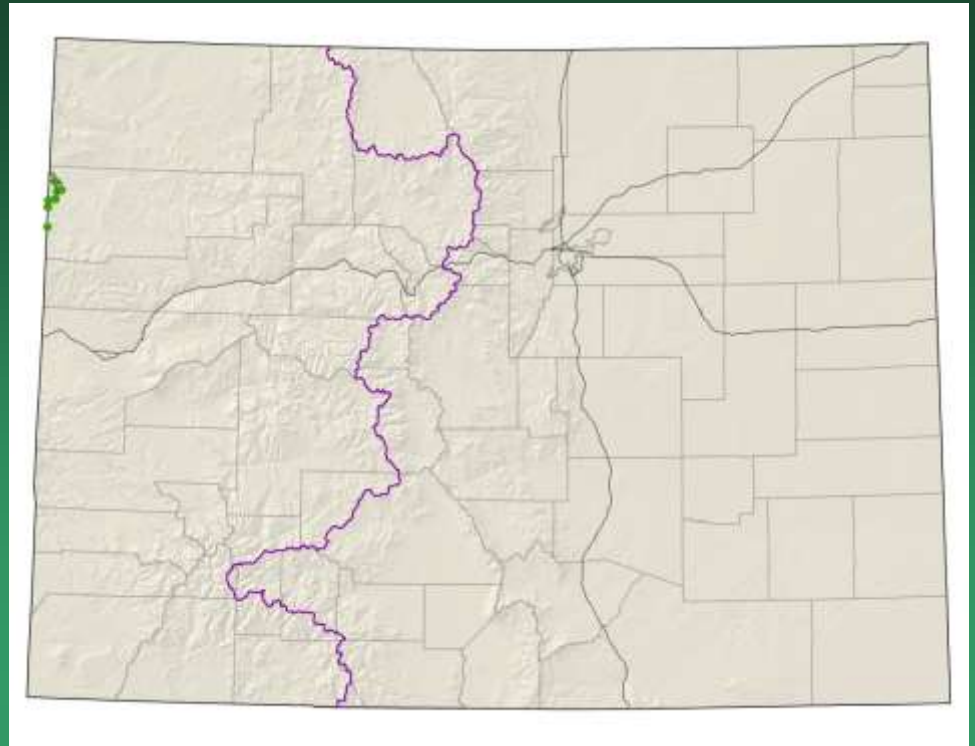
*Penstemon gibbensii*  
Gibben's beardtongue



Reviewed under Colorado G1 Species

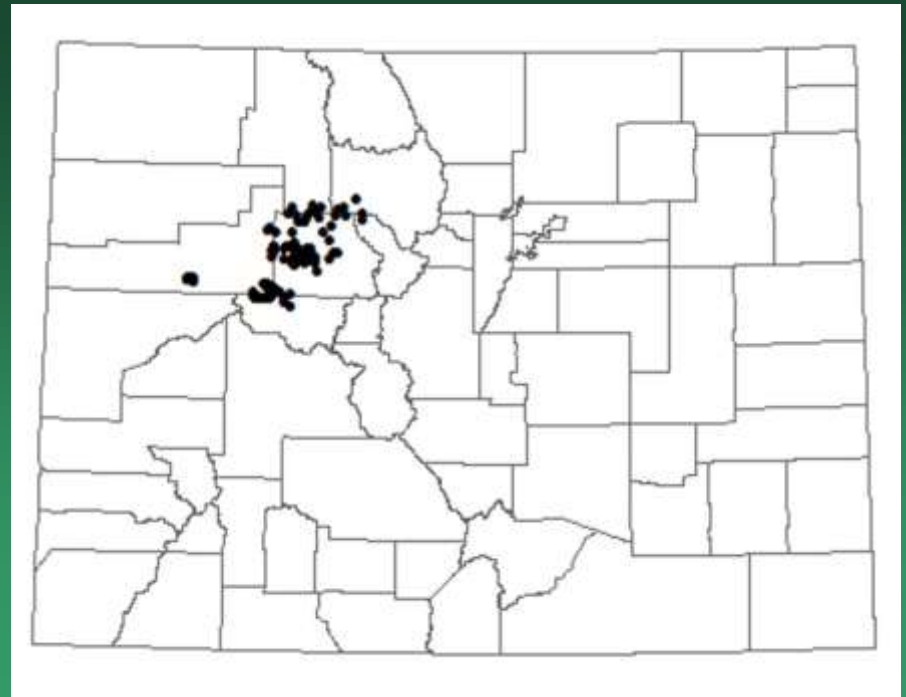


*Penstemon grahamii*  
Graham beardtongue



Reviewed under Colorado T, E & C Plant Species

*Penstemon harringtonii*  
Harrington beardtongue



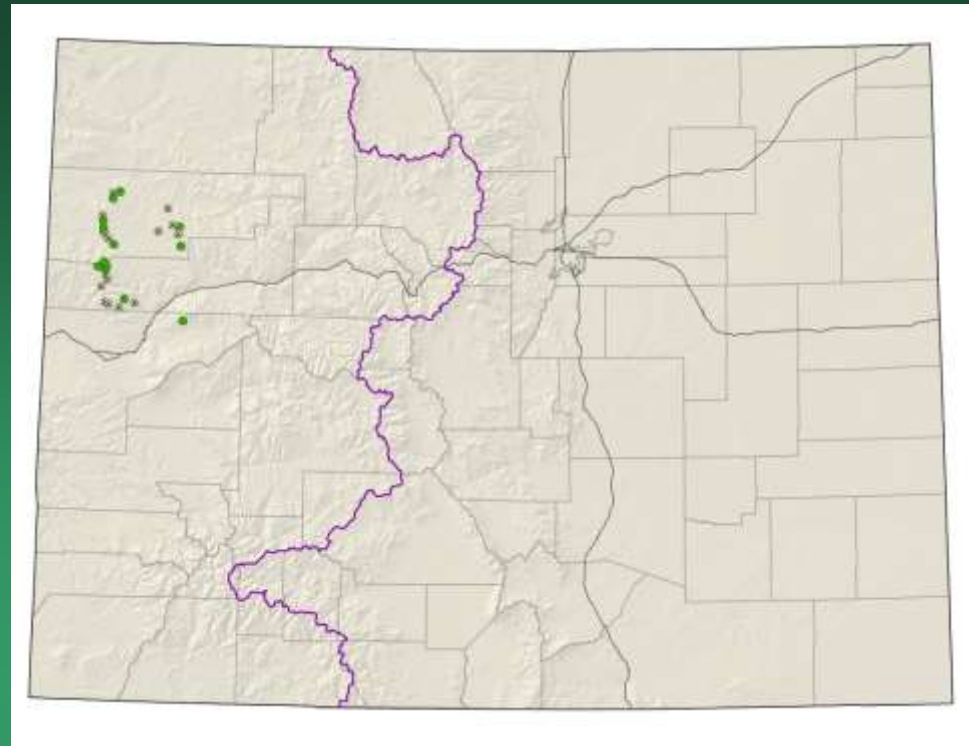
Reviewed under USFS Sensitive Species

*Penstemon scariosus* var.  
*albifluvis*  
White River penstemon



Reviewed under Colorado T, E & C Plant Species

*Physaria parviflora*=  
*Lesquerella parviflora*  
Piceance bladderpod

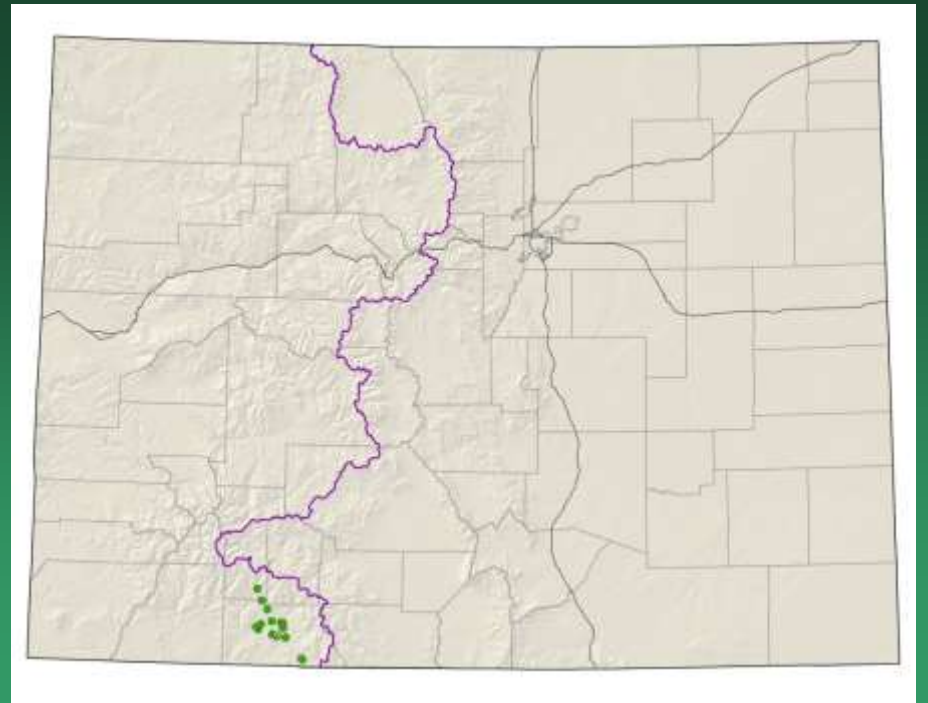


- Federal status: BLM sensitive
- Heritage ranks: G2/S2
- Global distribution: Colorado endemic (Rio Blanco, Garfield, and Mesa counties)
- Elevation range: 6,115-8,940 ft.
- Last observed in Colorado: 2012
- Colorado occurrences: 28 (16 are historical)
- Colorado individuals: >230,000
- Primary threats: Oil shale mining and oil and gas development
- Land ownership/management: BLM, state, private, USFS



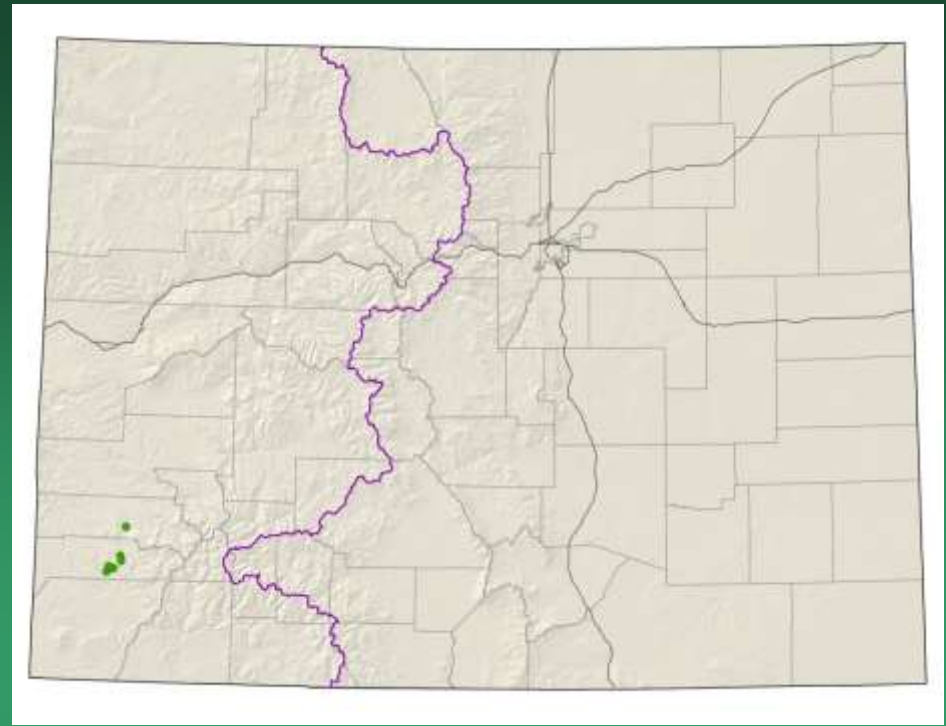
*Physaria parviflora*

*Physaria pruinosa*  
(=*Lesquerella pruinosa*)  
Pagosa bladderpod



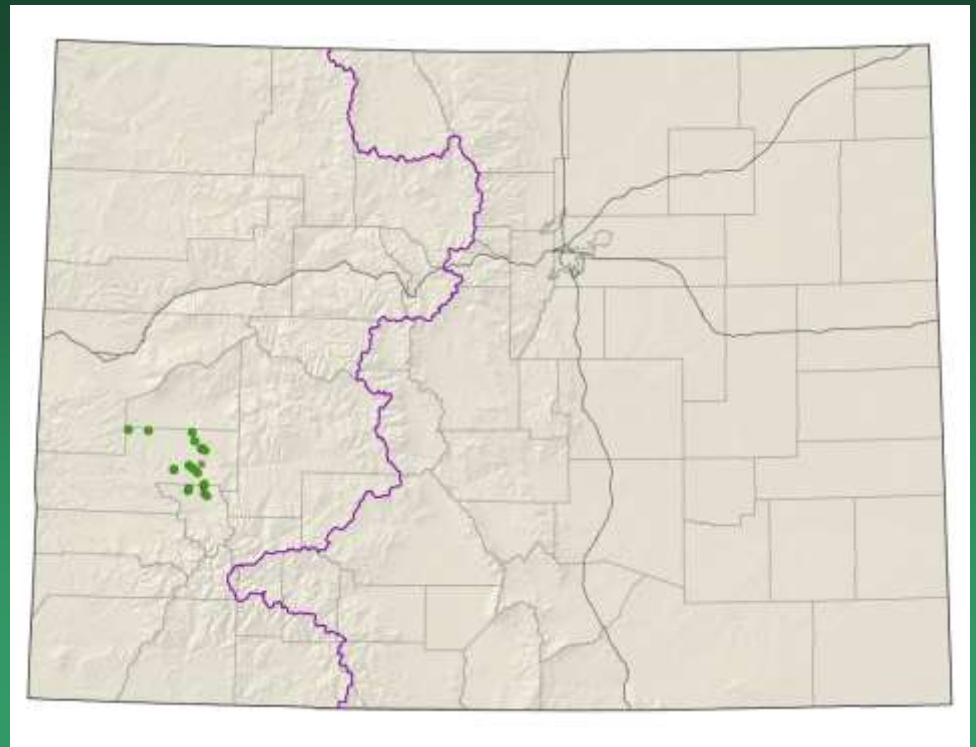
Reviewed under USFW Sensitive Species

*Physaria pulvinata*  
Cushion bladderpod



Reviewed under Colorado G1 Species

*Physaria vicina*=  
*Lesquerella vicina*  
Montrose bladderpod



- Federal status: BLM sensitive
- Heritage ranks: G2/S2
- Global distribution: Colorado endemic (Garfield, Montrose and Ouray counties)
- Elevation range: 5,700-7,540 ft.
- Last observed in Colorado: 2016
- Colorado occurrences: 23 (2 are historical)
- Colorado individuals: >9,000
- Primary threats: Roads and recreational uses
- Land ownership/management: BLM, NPS, state, private

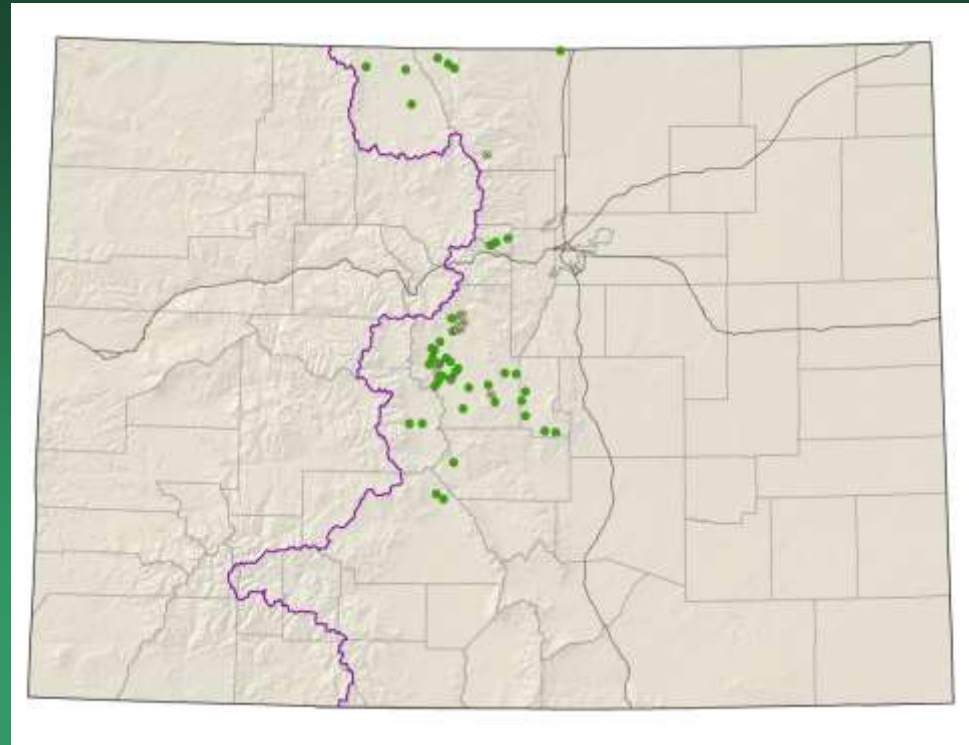




*Physaria vicina*

# *Sisyrinchium pallidum*

## Pale blue-eyed grass

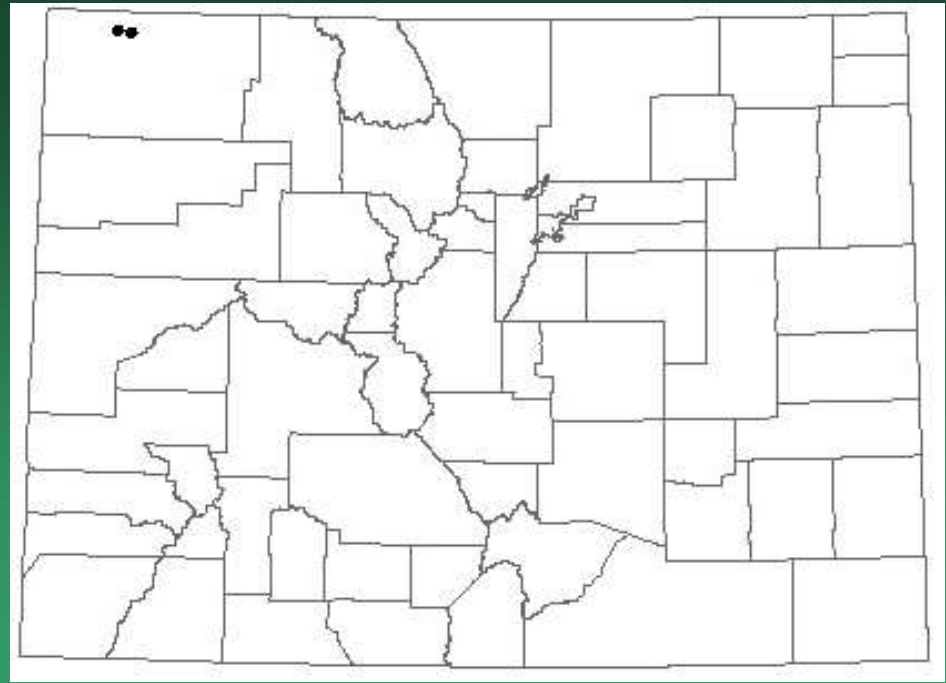


- Federal status: BLM Sensitive
- Heritage ranks: G3/S2
- Global distribution: Wyoming and Colorado (Chaffee, El Paso, Fremont, Gilpin, Jackson, Larimer, Park, Saguache, and Teller counties).
- Elevation range: 6,320-9,710 ft.
- Last observed in Colorado: 2016
- Colorado occurrences: 52 (10 are historical)
- Colorado individuals: 11,000
- Primary threats: road work, residential development, grazing, peat mining, and recreational activities.
- Land ownership/management: BLM, local government, NGO/land trust, NPS, state, private, USFS

*Sisyrinchium pallidum*



*Sphaeromeria capitata*  
Rock-tansy

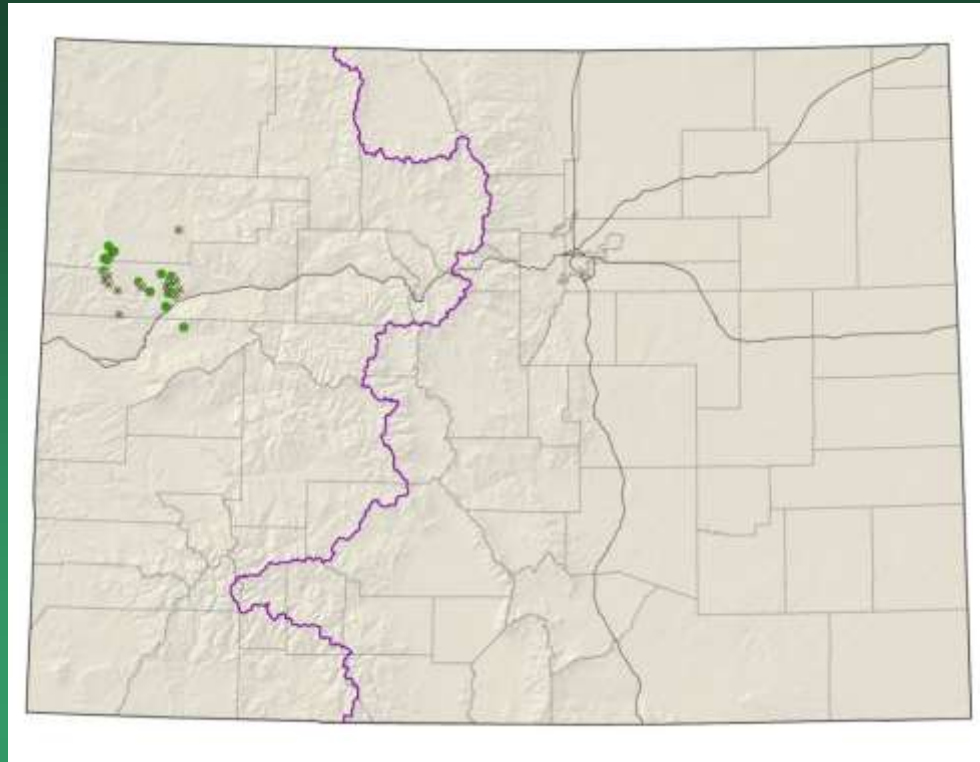


- Federal status: BLM sensitive
- Heritage ranks: G3/S1
- Global distribution: Utah, Wyoming, Montana, and Colorado (Moffat County).
- Elevation range: 6,650 – 7,830 ft.
- Colorado occurrences: 2 (historical)
- Primary threats: oil and gas development



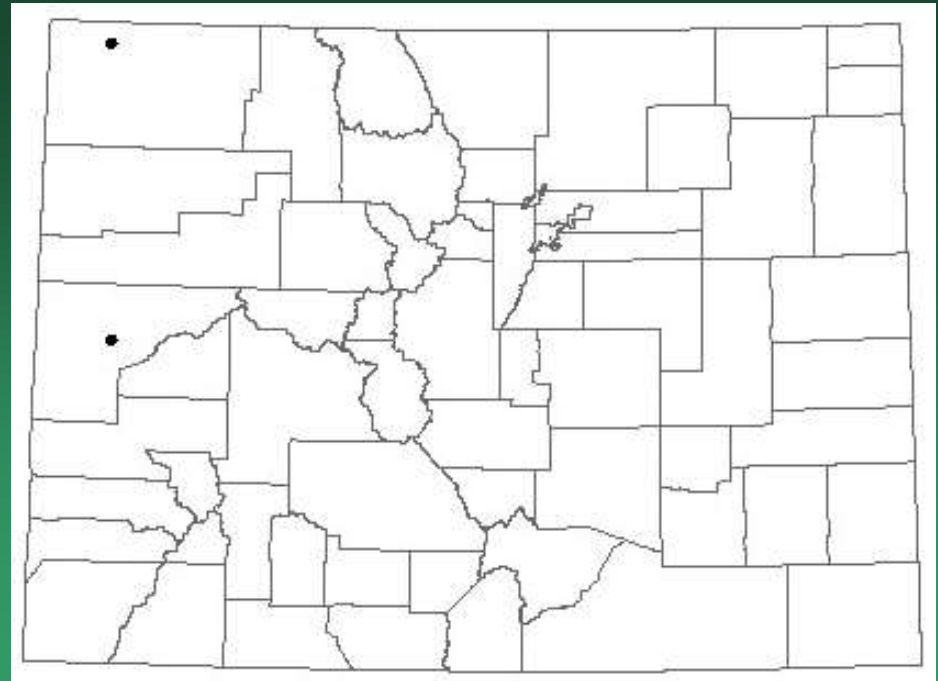
*Sphaeromeria capitata*

*Thalictrum heliophilum*  
Sun-loving meadowrue



Reviewed under USFS Sensitive Species

*Townsendia strigosa*  
Strigose Easter-daisy



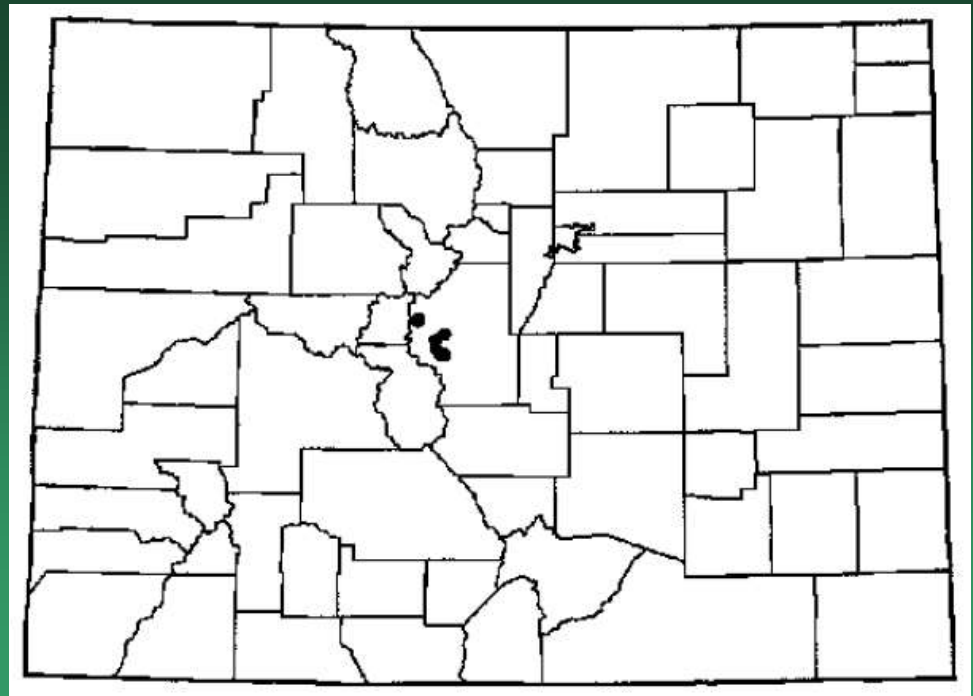
- Federal status: BLM sensitive
- Heritage ranks: G4/S1
- Global distribution: Utah, Wyoming, and Colorado (Mesa, Moffat, Delta, and Montrose counties).
- Elevation range: 5,000 – 9,000 ft.
- Colorado occurrences: 6 (4 are historical)
- Primary threats: recreation uses and road maintenance



*Townsendia strigosa*



*Trichophorum pumilum*  
Little bulrush



- Federal status: BLM sensitive
- Heritage ranks: G5/S2
- Global distribution: Eurasia, Quebec, California, and Colorado (Park County)
- Elevation range: 9,300 – 11,000 ft.
- Colorado occurrences: 15 (6 are historical)
- Primary threats: peat mining, cattle grazing, and hydrologic alterations



*Trichophorum pumilum*



**To contribute data or photos  
contact:**

**Colorado Natural Heritage Program  
[www.cnhp.colostate.edu](http://www.cnhp.colostate.edu)**

[Jill.handwerk@colostate.edu](mailto:Jill.handwerk@colostate.edu)  
[Susan.panjabi@colostate.edu](mailto:Susan.panjabi@colostate.edu)  
[Pamela.smith@colostate.edu](mailto:Pamela.smith@colostate.edu)