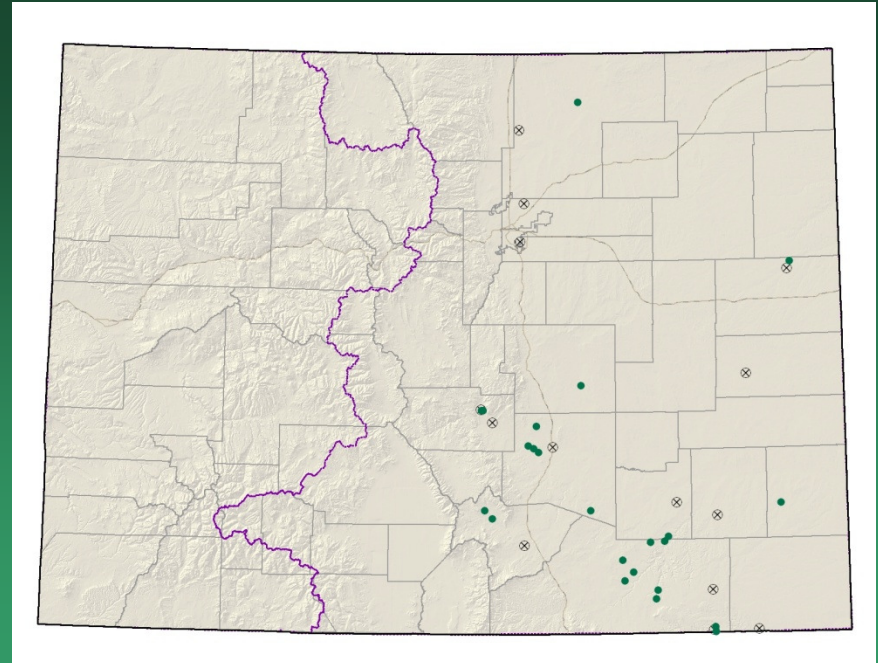


2006  
Colorado Springs  
SE Colorado  
G2 species

*Asclepias uncialis* ssp.  
*uncialis*  
Dwarf milkweed



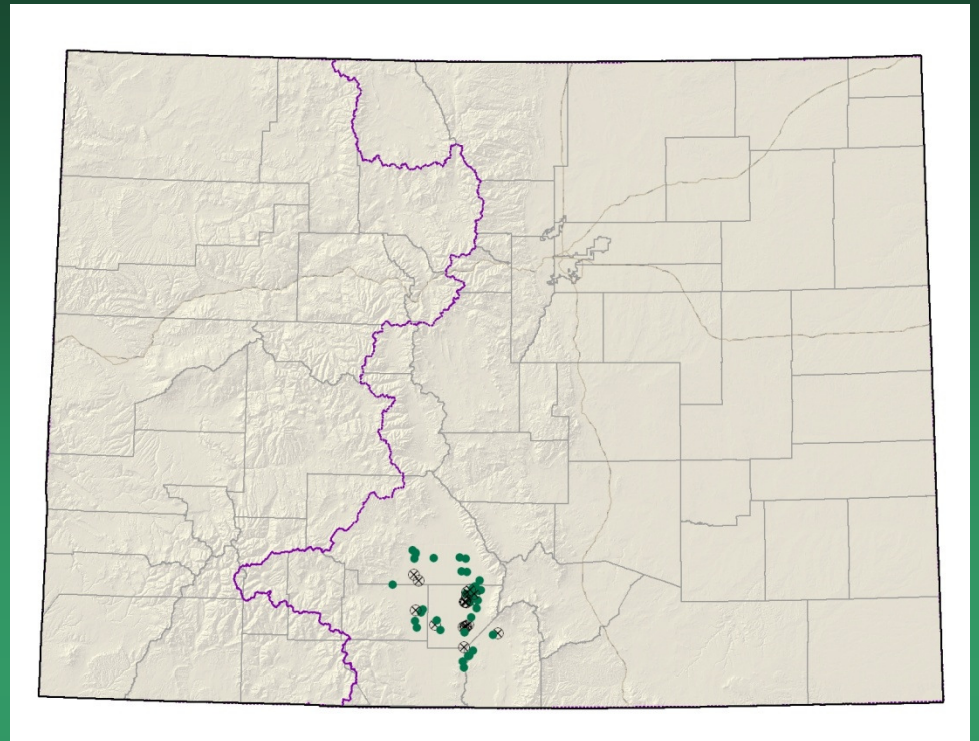
- Federal status: BLM/USFS sensitive
- Heritage ranks: G3G4T2T3/S2
- Global distribution: Arizona, Texas, New Mexico, Wyoming, Oklahoma and Eastern Colorado (Las Animas, Weld, Kit Carson, Huerfano, Pueblo, Otero, Prowers, Fremont, and El Paso counties)
- Last observed in Colorado: 2009
- Colorado occurrences: 35 or more (12 are historical)
- Colorado individuals: ~500
- Primary threats: Population limitation by unknown biological requirements, altered disturbance regime, habitat loss, spread of exotic species, global climate change
- Land ownership/management: BLM, Military, Forest Service, Private, and State lands



*Asclepias uncialis* ssp. *uncialis*

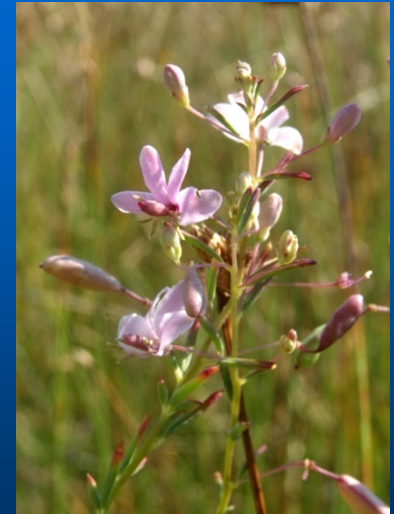
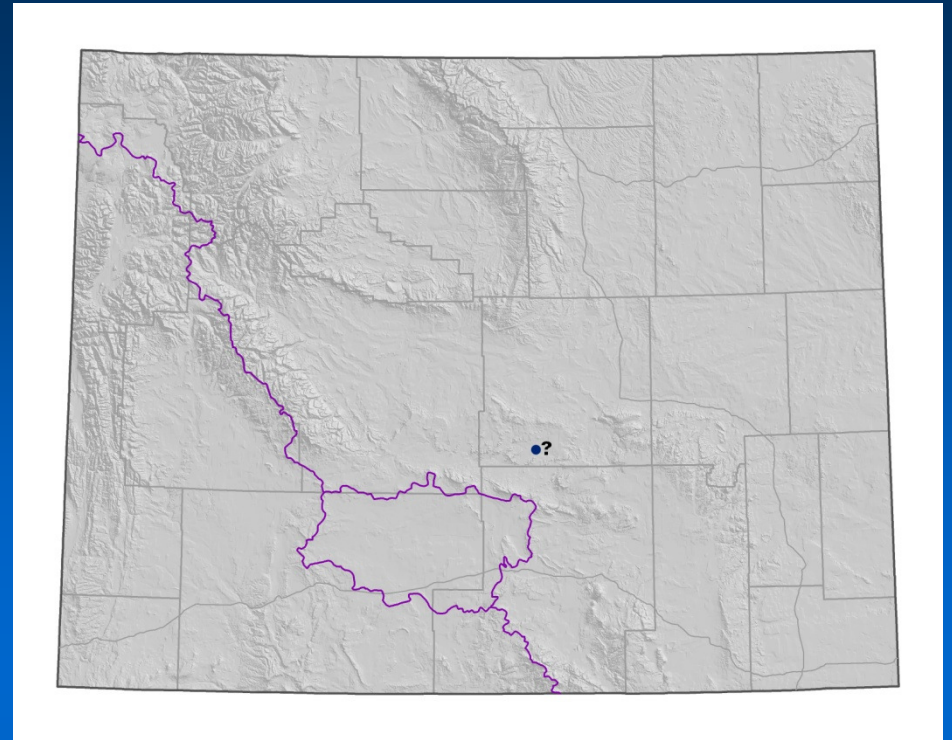
*Cleome multicaulis*  
Many-stemmed  
spider-flower

- Federal status: BLM sensitive
- Heritage ranks: G2G3/S2S3
- Global distribution: Mexico, Texas, Arizona, New Mexico, Wyoming and Colorado (Alamosa, Conejos, Costilla, Rio Grande, and Saguache counties)
- Last observed in Colorado: 2006
- Colorado occurrences: 39 (11 are historical)
- Colorado individuals: ~5,132,000
- Primary threats: draining of wetlands
- Land ownership/management: BLM, National Wildlife Refuge, Private, State, and Wilderness



*Cleome multicaulis*  
Many-stemmed  
spider-flower

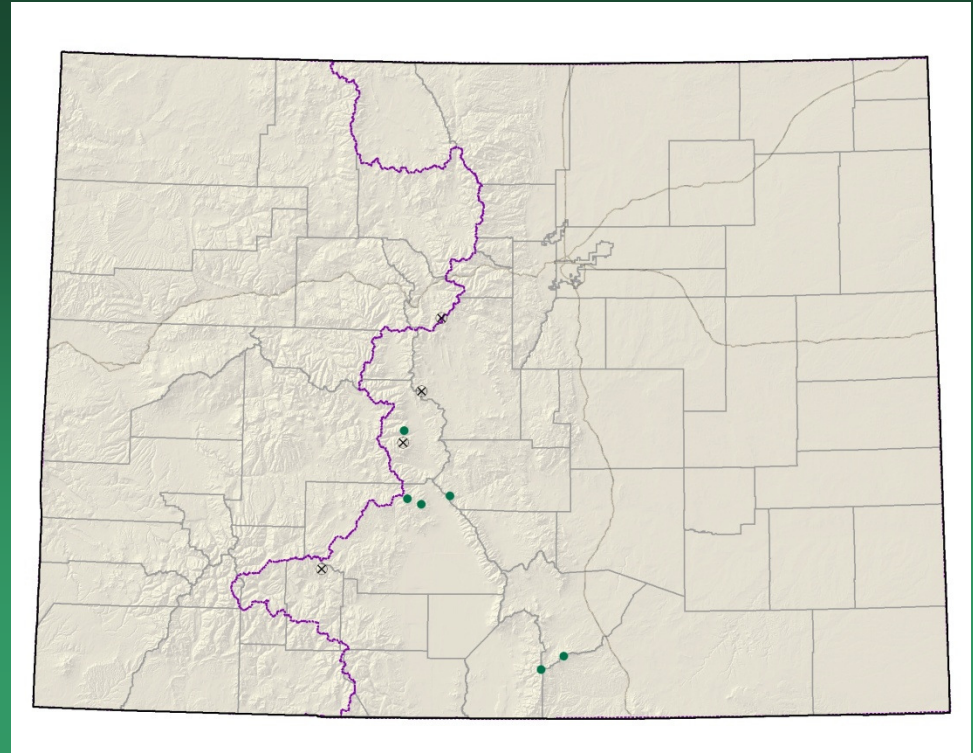
- Federal status: BLM Sensitive
- Heritage ranks: G2G3/S1
- Last observed in Wyoming: 2009
- Wyoming occurrences: 2 (1 failed to find)
- Primary threats: exotic species, energy developments
- Land ownership/management: Pathfinder NWR, BLM Casper FO



*Cleome multicaulis*



*Delphinium ramosum*  
*var. alpestre*  
= *Delphinium alpestre*  
Colorado larkspur



- Federal status: none
- Heritage ranks: G2/S2
- Global distribution: New Mexico and Colorado (Costilla, Chaffee, Fremont, Huerfano, Las Animas, Mineral, Park, Saguache, and Summit counties)
- Last observed in Colorado: 2005
- Colorado occurrences: 10 (4 are historical)
- Colorado individuals: ~75
- Primary threats: Trampling from recreational activities
- Land ownership/management: Forest Service, Private and Wilderness Areas

*Delphinium ramosum* var. *alpestre*



T. Todsén



*Delphinium robustum*  
Wahatoya Creek  
larkspur



- Federal status: none
- Heritage ranks: G2?/S2?
- Global distribution: New Mexico and Colorado (Huerfano, El Paso, Las Animas, and Saguache counties)
- Last observed in Colorado: 1969
- Colorado occurrences: 4 – all historical
- Colorado individuals: unknown
- Primary threats: Some species of *Delphinium* are poisonous to cattle, so the genus as a whole is sometimes targeted for poisonous weed control
- Land ownership/management: BLM, Forest Service, Private and State

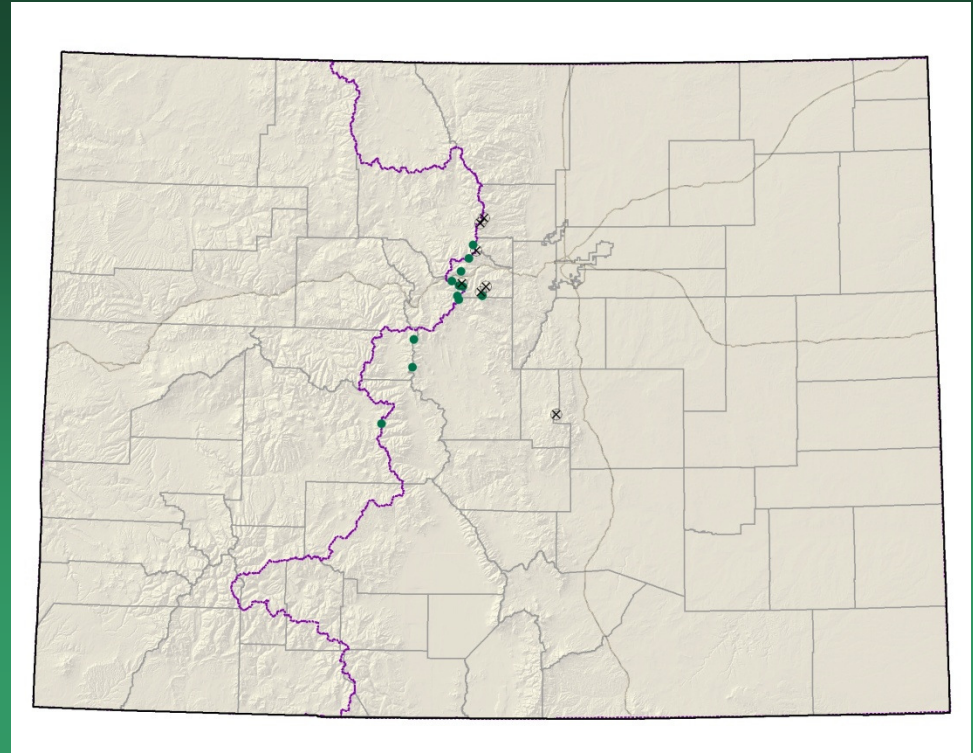
*Delphinium robustum*



# *Draba exunguiculata*

## Clawless draba

- Federal status: USFS sensitive
- Heritage ranks: G2/S2
- Global distribution: endemic to Colorado (Boulder, Chaffee, Clear Creek, El Paso, Gilpin, Grand, Lake, Park and Summit counties)
- Last observed in Colorado: 2006
- Colorado occurrences: 19 (7 are historical)
- Colorado individuals: ~250
- Primary threats: Trampling from hikers and mountain goats, over-collection for gardens, acid rain, air pollution, and global warming
- Land ownership/management: BLM, Forest Service, Private, State and Wilderness Areas

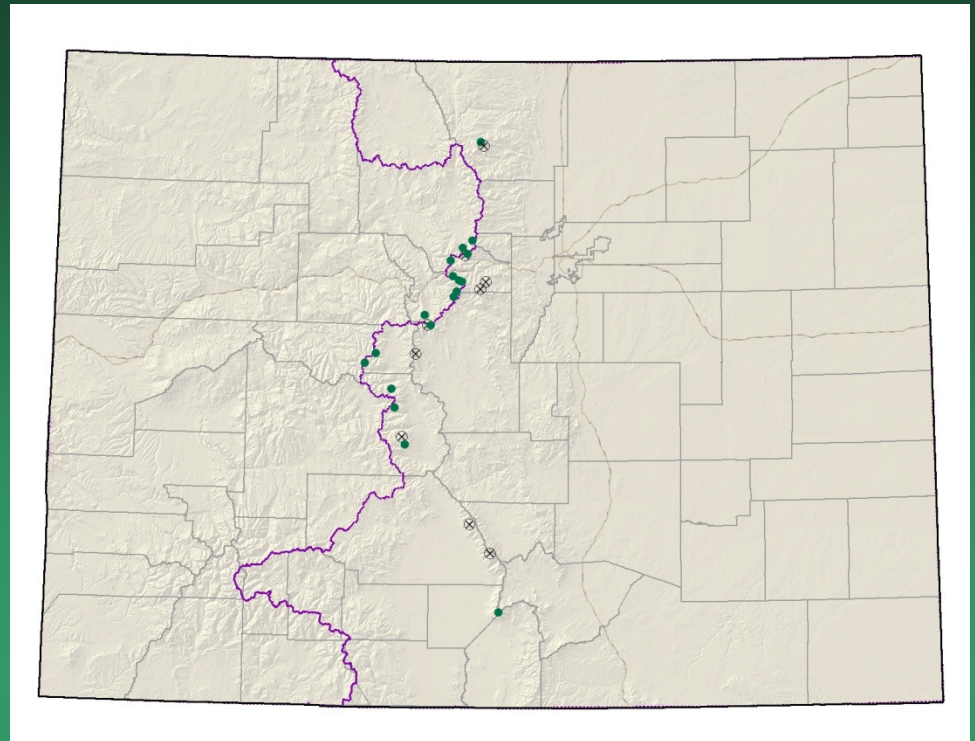


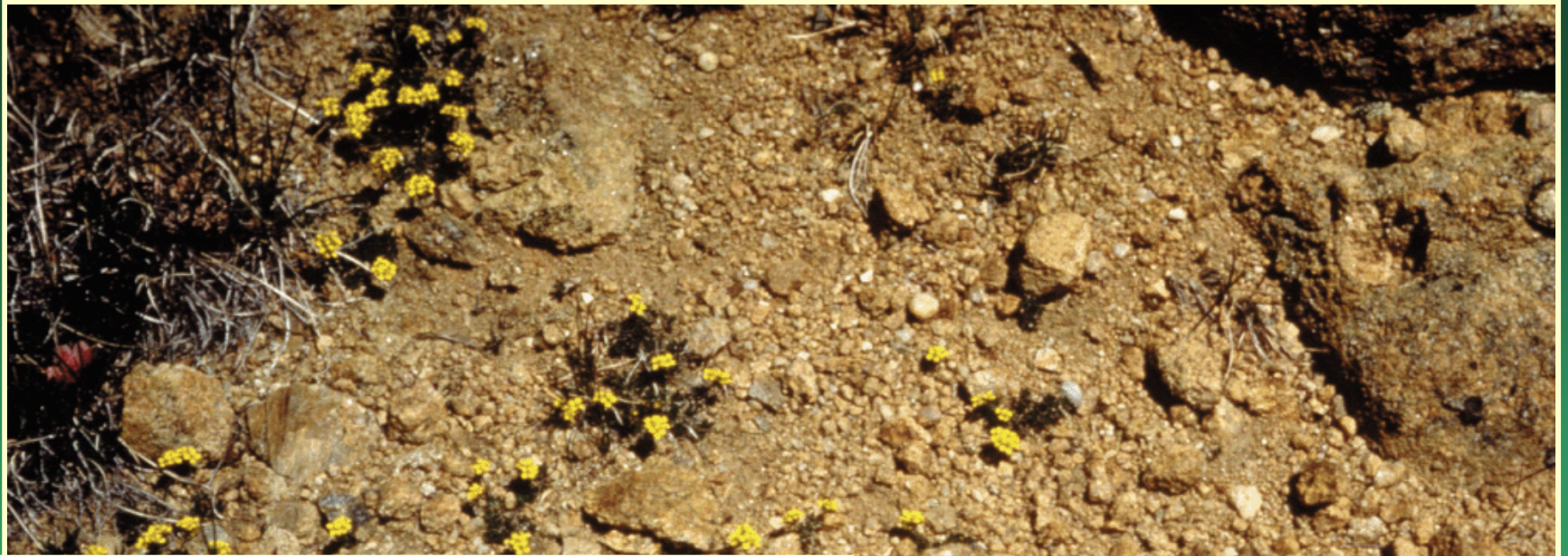


*Draba exunguiculata*

*Draba grayana*  
Gray's Peak whitlow-  
grass

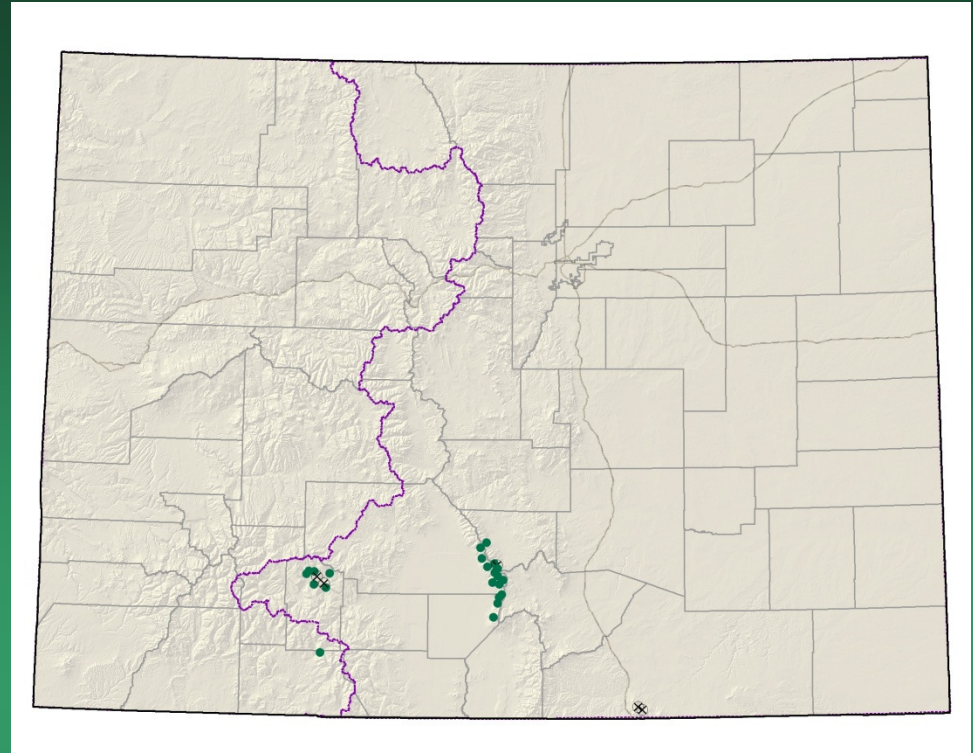
- Federal status: USFS sensitive
- Heritage ranks: G2/S2
- Global distribution: endemic to Colorado (Chaffee, Clear Creek, Grand, Huerfano, Larimer, Park, Pitkin, Saguache, and Summit counties)
- Last observed in Colorado: 2006
- Colorado occurrences: 27 (9 are historical)
- Colorado individuals: ~200
- Primary threats: Trampling from hikers and mountain goats, over-collection for gardens and global warming
- Land ownership/management: Forest Service, National Parks and Monuments, Private and Wilderness Areas





*Draba grayana*

# *Draba smithii* Smith's whitlow-grass



- Federal status: USFS sensitive
- Heritage ranks: G2/S2
- Global distribution: endemic to Colorado (Alamosa, Archuleta, Custer, Las Animas, Mineral, and Saguache counties)
- Last observed in Colorado: 2006
- Colorado occurrences: 27 (5 are historical)
- Colorado individuals: ~3200
- Primary threats: Habitat modification from hiking and construction
- Land ownership/management: Forest Service, Private and State

*Draba smithii*





*Grindelia inornata*  
Colorado gumweed

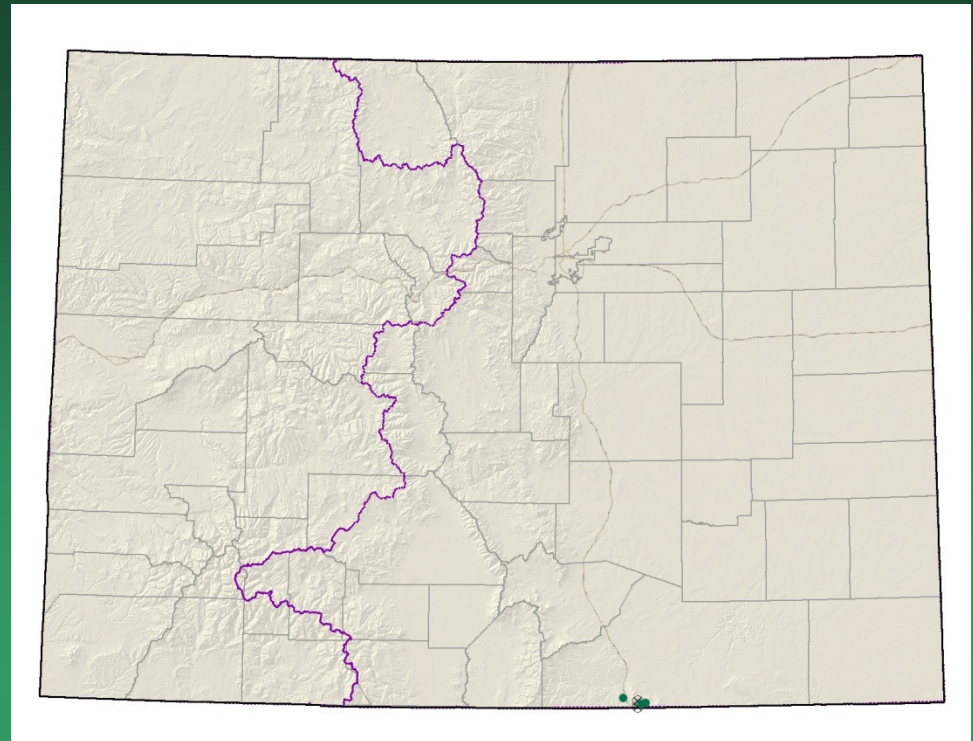
No longer tracked; found to be common

- Federal status: none
- Heritage ranks: G4/S4
- Global distribution: endemic to Colorado (Baca, Denver, Fremont, Las Animas, Otero, Prowers, and Pueblo counties)
- Last observed in Colorado: 6/15/2003
- Colorado occurrences: 8, but found to be much more common
- Colorado individuals: unknown
- Primary threats: Residential and commercial development, and road maintenance activities
- Land ownership/management: BLM, Military, Forest Service, Private and State

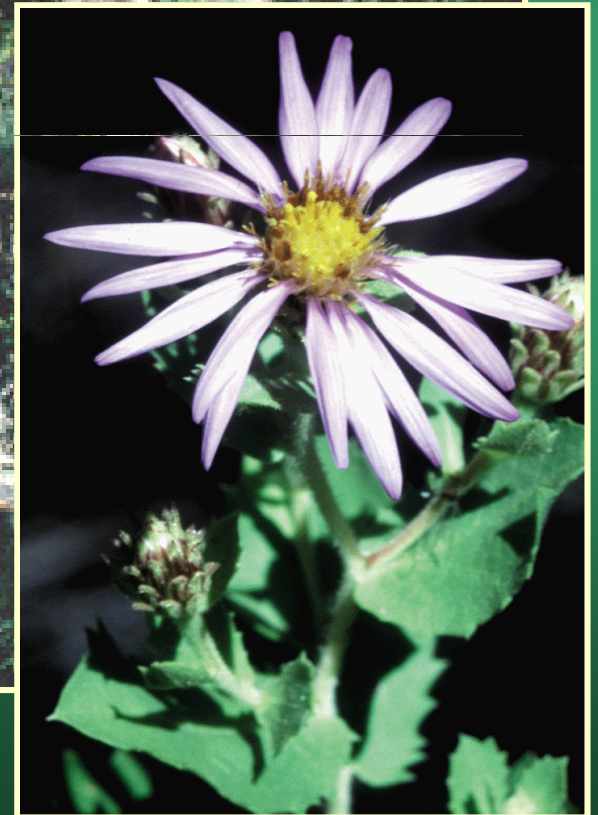


*Grindelia inornata*

*Herrickia horrida*  
= *Eurybia horrida*  
Canadian River spiny aster or  
Horrid herrickia

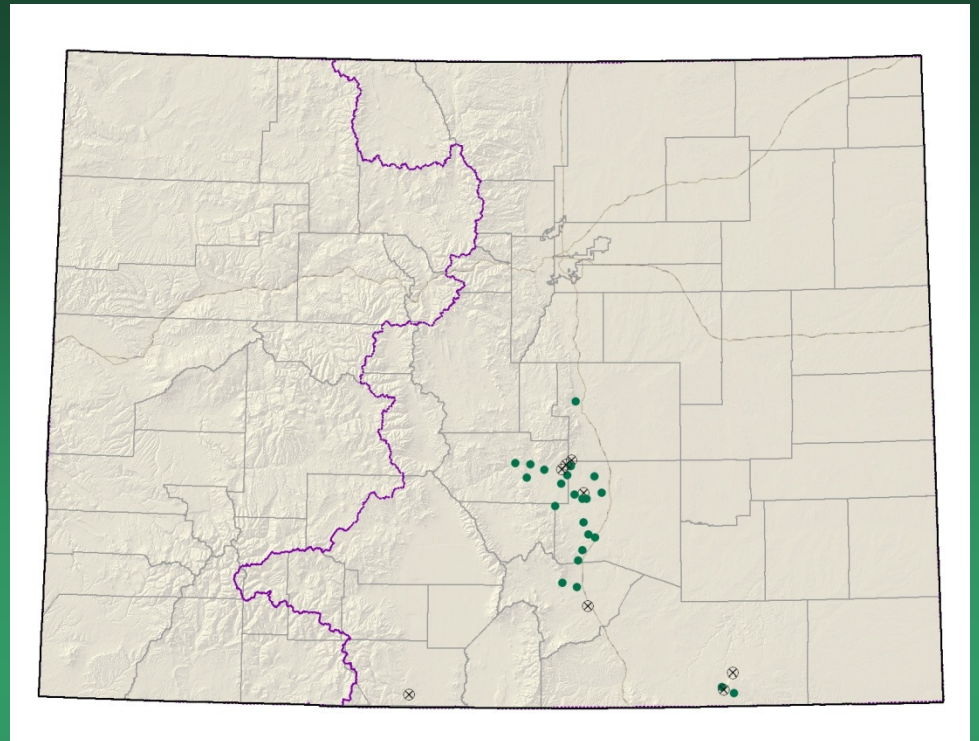


- Federal status: none
- Heritage ranks: G2?/S1
- Global distribution: New Mexico and Colorado (Las Animas County)
- Last observed in Colorado: 1999
- Colorado occurrences: 5 (2 are historical)
- Colorado individuals: unknown
- Primary threats: unknown
- Land ownership/management: Private



*Herrickia horrida*

# *Lesquerella calcicola* Rocky Mountain bladderpod

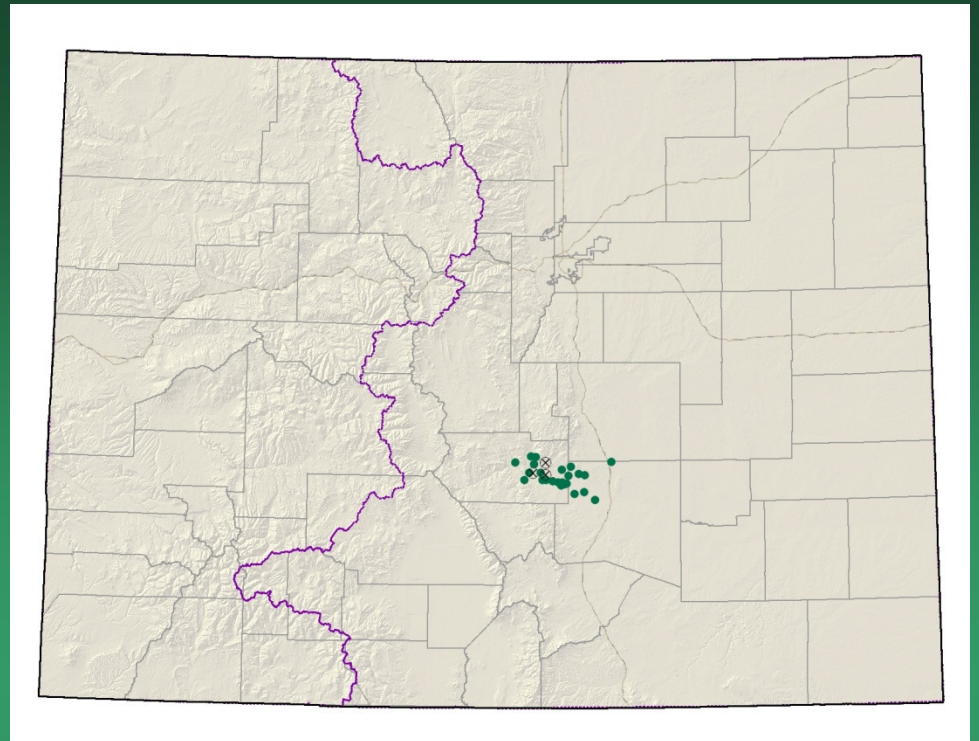


- Federal status: none
- Heritage ranks: G2/S2
- Global distribution: New Mexico and Colorado (Conejos, El Paso, Fremont, Huerfano, Las Animas, and Pueblo counties)
- Last observed in Colorado: 2009
- Colorado occurrences: 31 (8 are historical)
- Colorado individuals: ~2000
- Primary threats: This species occurs in areas that are experiencing rapid development pressures
- Land ownership/management: BLM, Military, Private, and State



*Lesquerella calcicola*

*Nuttallia chrysantha*  
= *Mentzelia chrysantha*  
Golden blazing star



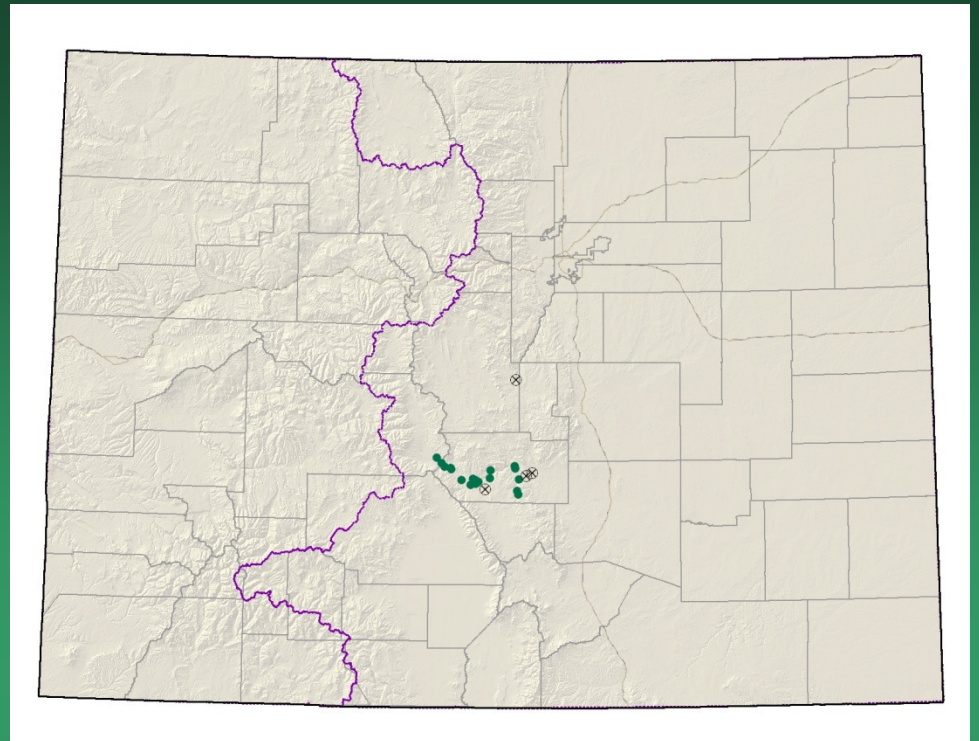
- Federal status: BLM sensitive
- Heritage ranks: G2/S2
- Global distribution: endemic to Colorado (Fremont, El Paso, and Pueblo counties)
- Last observed in Colorado: 2007
- Colorado occurrences: 27 (3 are historical)
- Colorado individuals: ~4100
- Primary threats: Grazing, quarry activities, and subdivision and road construction
- Land ownership/management: BLM, Military, Private and State



*Nuttallia chrysantha*



*Nuttallia densa*  
= *Mentzelia densa*  
Arkansas Canyon  
stickleaf

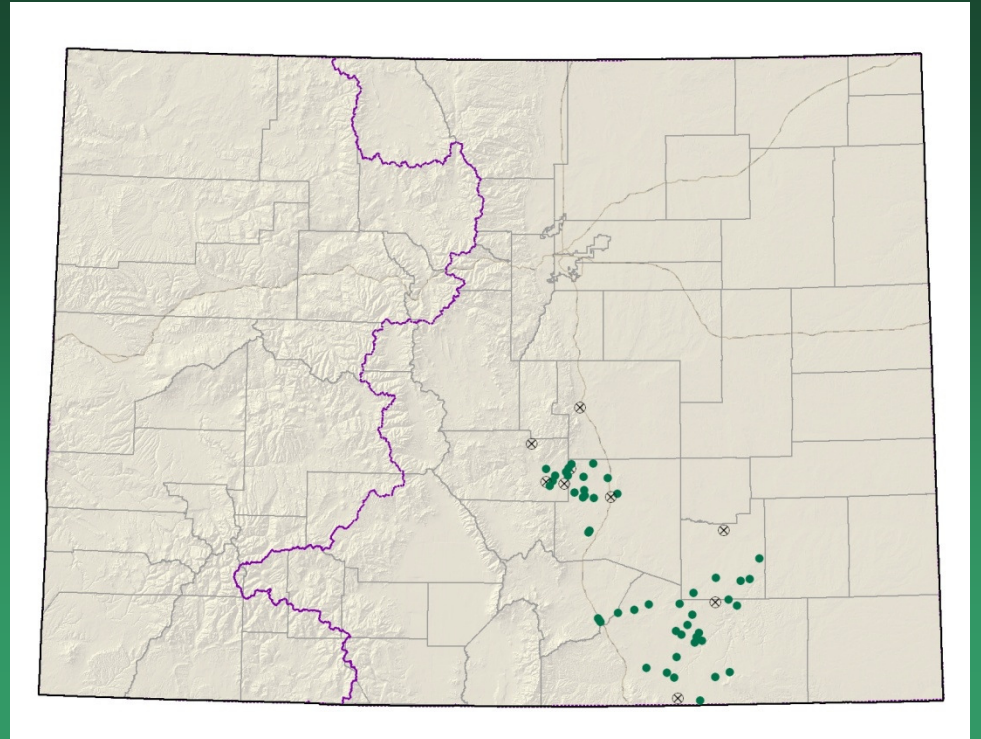


- Federal status: BLM sensitive
- Heritage ranks: G2/S2
- Global distribution: endemic to Colorado (Fremont County)
- Last observed in Colorado: 2009
- Colorado occurrences: 25 (4 are historical)
- Colorado individuals: ~13,500
- Primary threats: Recreational development and road construction
- Land ownership/management: BLM, Forest Service, Private and State



*Nuttallia densa*

*Oenothera harringtonii*  
Arkansas Valley  
evening primrose



- Federal status: USFS sensitive
- Heritage ranks: G2G3/S2S3
- Global distribution: endemic to Colorado (El Paso, Fremont, Huerfano, Las Animas, Otero, and Pueblo counties)
- Last observed in Colorado: 2009
- Colorado occurrences: 57 (9 are historical)
- Colorado individuals: ~1500
- Primary threats: Habitat loss due to urbanization, road development projects, and resource extraction activities, especially quarrying and surface mining
- Land ownership/management: BLM, Military, Forest Service, Private and State

ERROR: stackunderflow  
OFFENDING COMMAND: ~

STACK: