

The Colorado Rare Plant Technical Committee presents:

6th Annual

Colorado Rare Plant Symposium

September 11, 2009

Loveland, Colorado

Sponsored by:

Colorado Native Plant Society

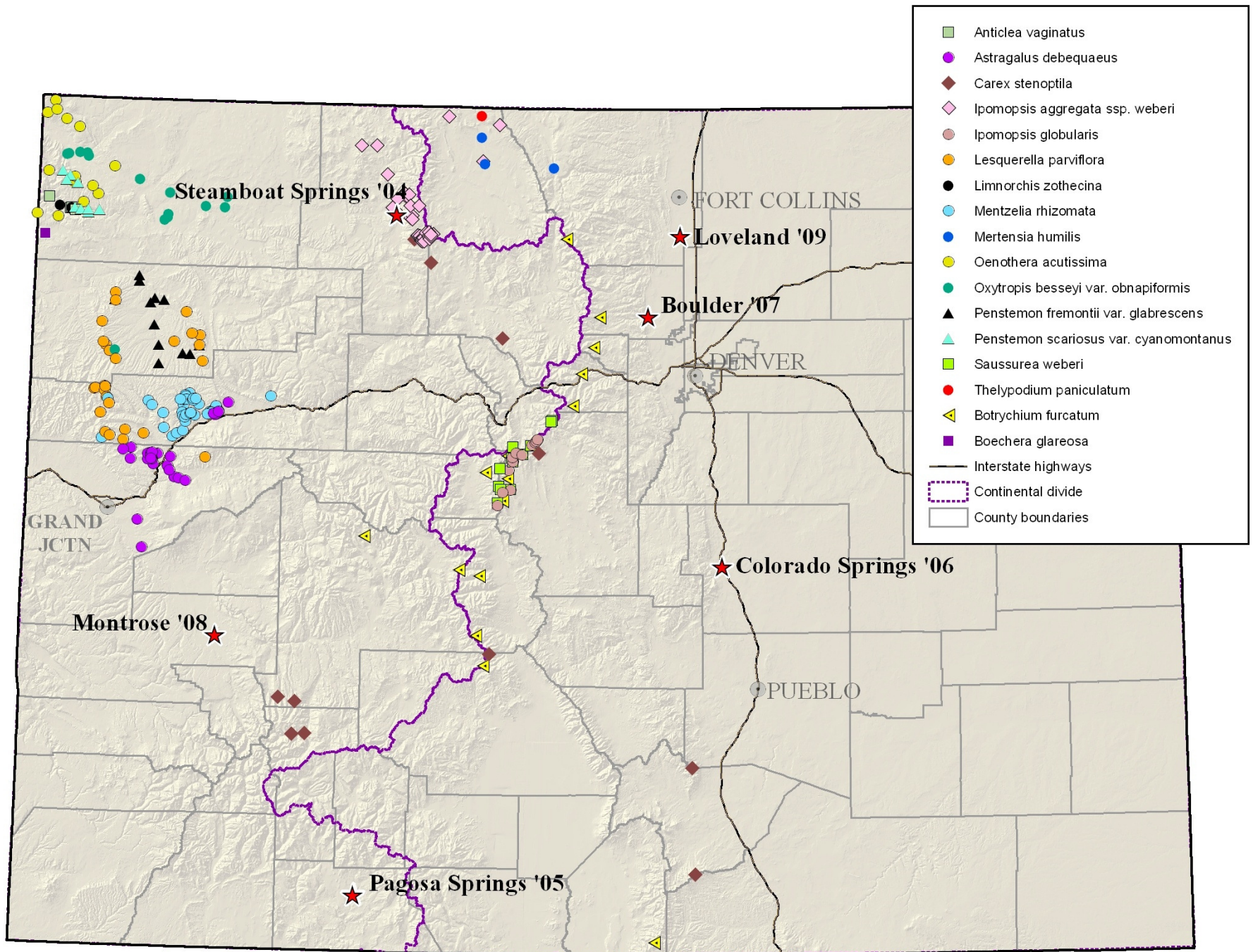
University of Colorado Herbarium

US Fish and Wildlife Service

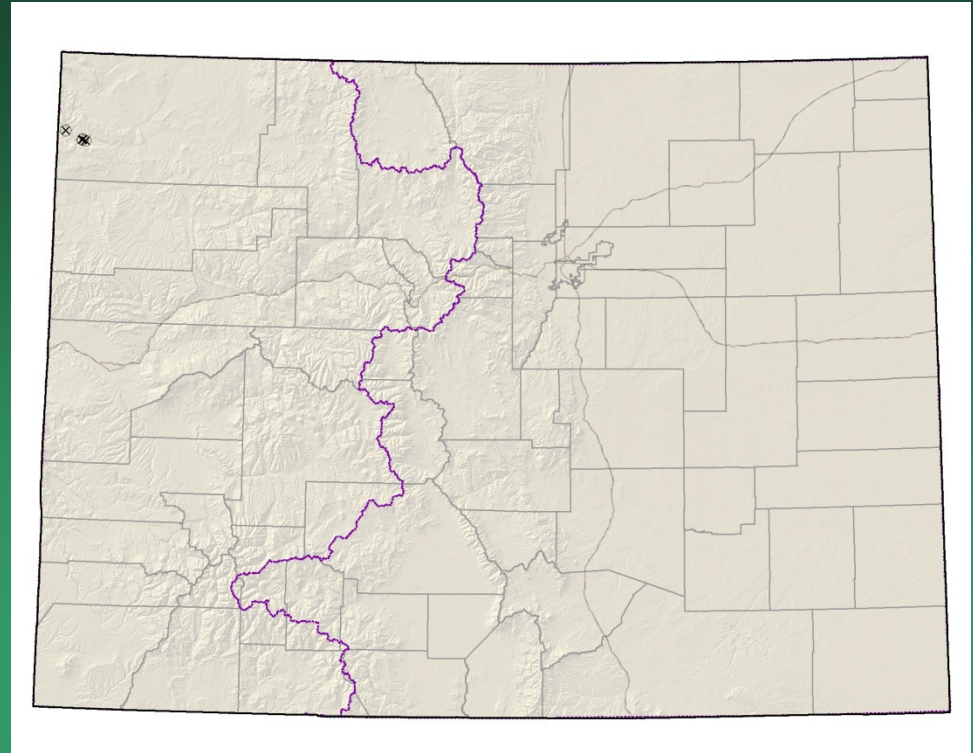
Colorado Natural Heritage Program

USDA Forest Service





Anticlea vaginatus
=*Zigadenus vaginatus*
sheathed deathcamas



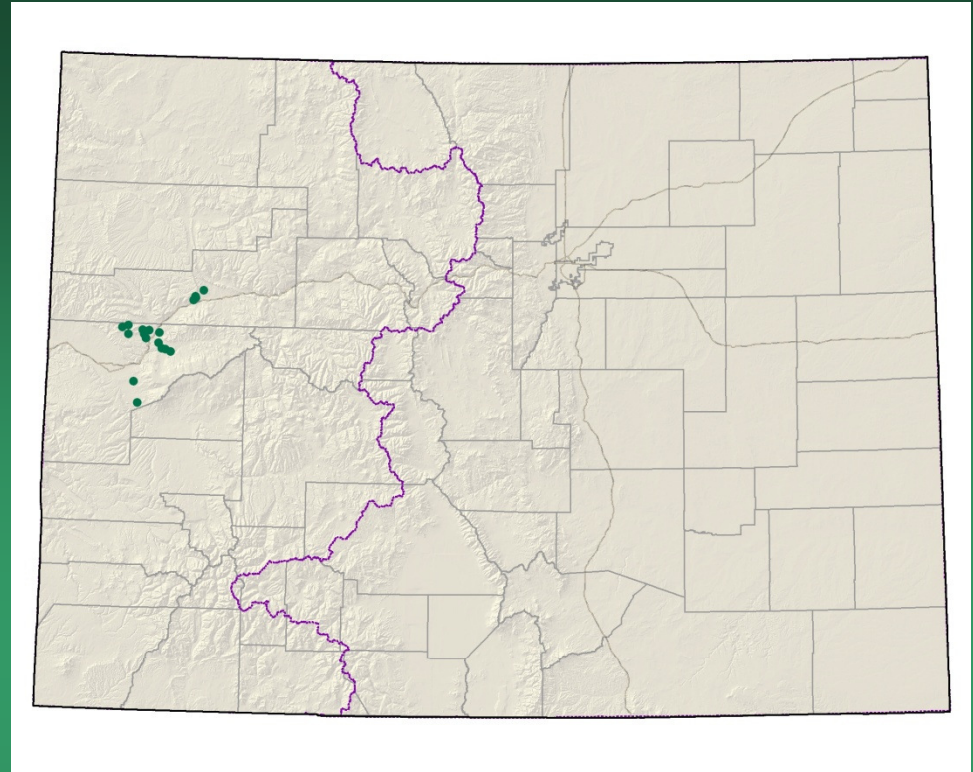
- Federal status: none
- Heritage ranks: G2/S1 or SH
- Global distribution: Utah and Colorado (Moffat county)
- Last observed in Colorado: 1988
- Colorado occurrences: 4 (all are historical)
- Colorado individuals: unknown
- Primary threats: hydrologic alteration
- Land ownership/management: NPS

Anticlea vaginatus



Astragalus debequaeus

Debeque milkvetch



- Federal status: BLM sensitive
- Heritage ranks: G2/S2
- Global distribution: Colorado endemic (Garfield and Mesa counties)
- Last observed in Colorado: 2008
- Colorado occurrences: 18
- Colorado individuals: >61,000
- Primary threats: Disturbance by oil and gas development
- Land ownership/management: BLM, private



Astragalus debequaeus

Boecheera glareosa snowbasin rockcress

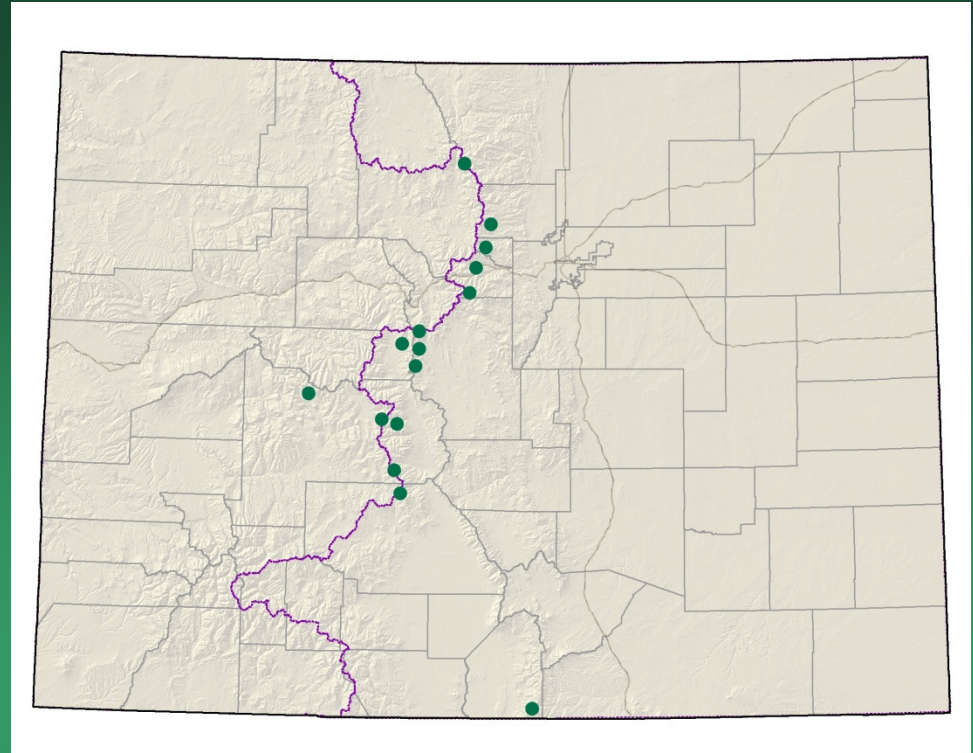


- Federal status: none
- Heritage ranks: G1G2/S1
- Global distribution: Utah and Colorado (Moffat county)
- Last observed in Colorado: 2002 Dorn collection
- Colorado occurrences: 1 location known, not yet processed as occurrence
- Colorado individuals: unknown
- Primary threats: unknown
- Land ownership/management: BLM?

No photo available

Boechera glareosa

Botrychium tax. nov.
“*furcatum*” ?
forkleaved moonwort

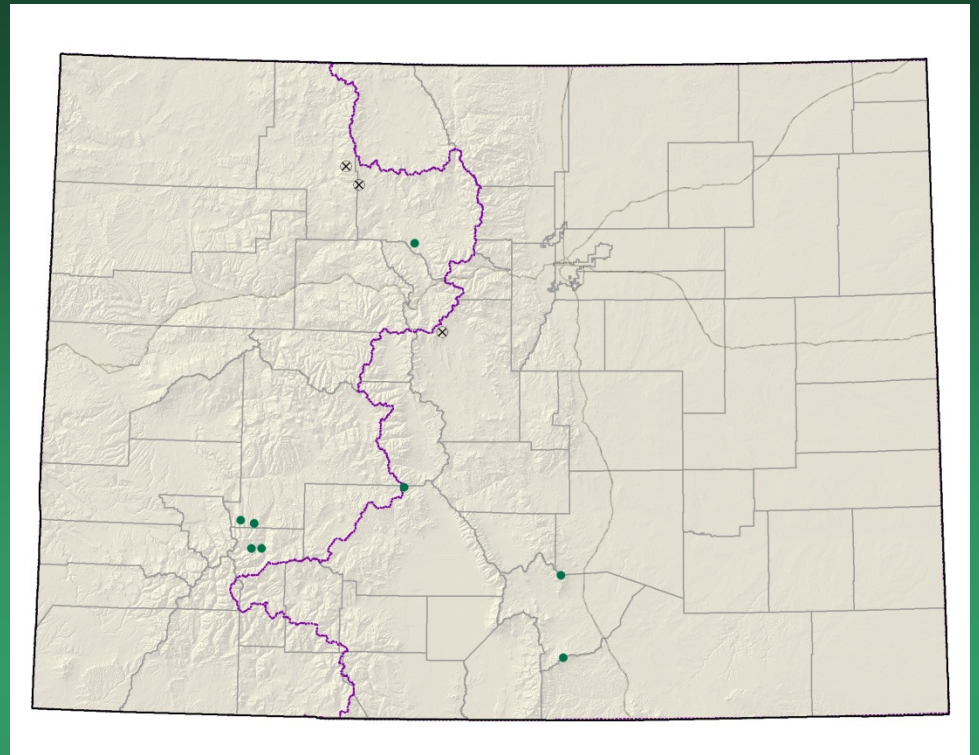


- Federal status: USFS sensitive
- Heritage ranks: G1G2/S1S2
- Global distribution: Colorado (Boulder, Chaffee, Clear Creek, Costilla, Grand, Gunnison, Lake, Park, and Saguache counties), New Mexico (Wheeler Peak, Taos County, pending genetic verification)
- Last observed in Colorado: 2009
- Colorado occurrences: 18 sites totaling 47 populations or subpopulations
- Colorado individuals: ~1200
- Primary threats: maintenance and improvements of roads and earthen dams
- Land ownership/management: USFS, NPS, Private

Botrychium tax. nov. "furcatum"



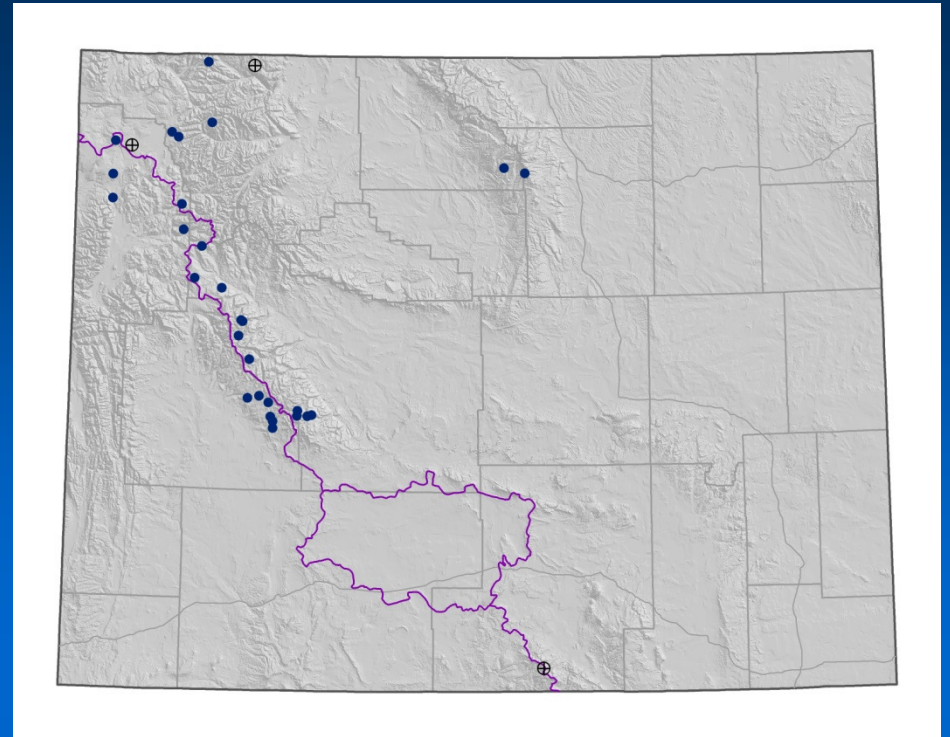
Carex stenoptila small-winged sedge



- Federal status: none
- Heritage ranks: G2/S2
- Global distribution: Montana, Wyoming, and Colorado (Park, Routt, Grand, Gunnison, Hinsdale, Saguache, and Huerfano counties)
- Last observed in Colorado: 1999
- Colorado occurrences: 11 (3 are historical)
- Colorado individuals: unknown
- Primary threats: none known
- Land ownership/management: USFS, BLM, private

Carex stenoptila Small-winged sedge

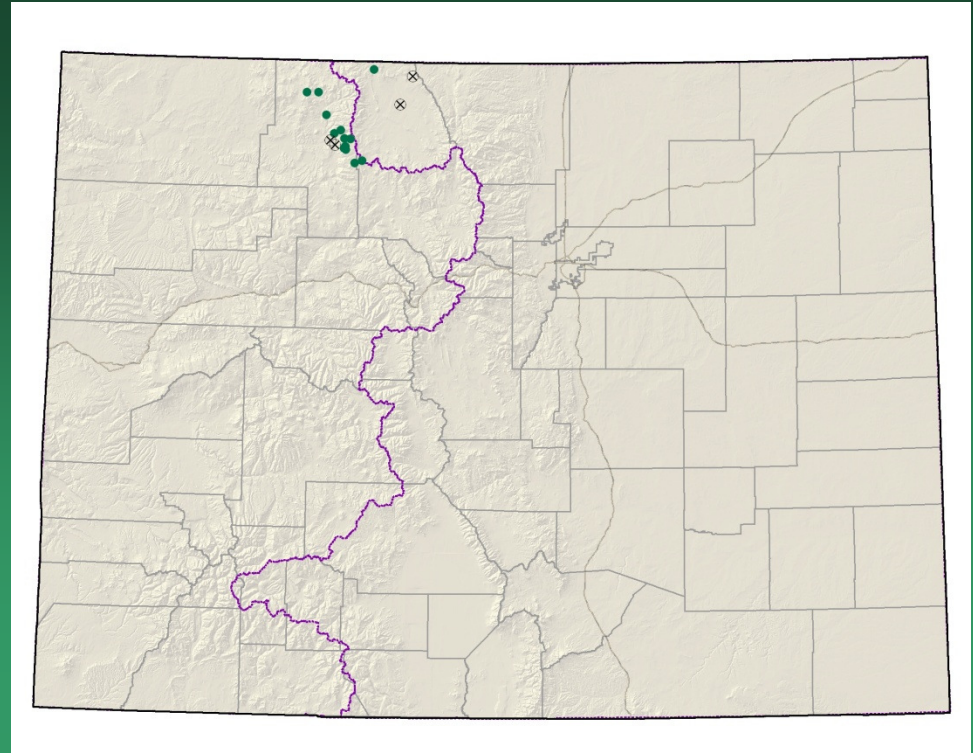
- Federal status: None
- Heritage ranks: G2/S2
- Last observed in Wyoming: 2006
- Wyoming occurrences: 27 extant; 3 historic (RM data)
- Primary threats: unknown
- Land ownership/management: Bighorn NF, Bridger-Teton NF, Medicine Bow-Routt NF, Shoshone NF, Yellowstone NP



Carex stenoptila

No photo available

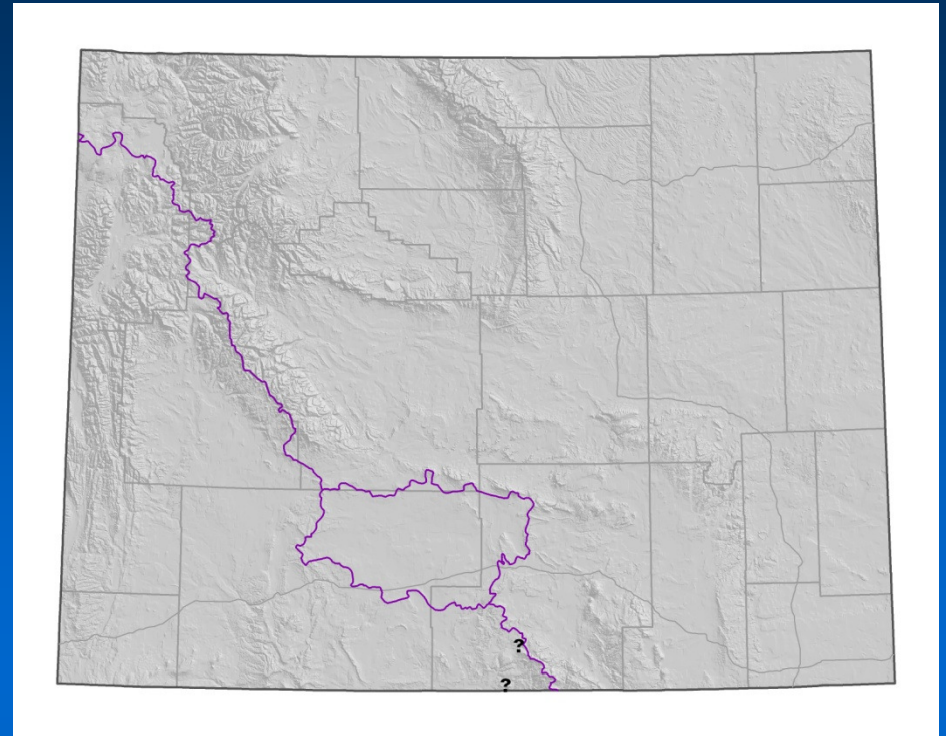
Ipomopsis aggregata
ssp. weberi
Weber's scarlet gilia



- Federal status: USFS sensitive
- Heritage ranks: G5T2/S2
- Global distribution: Regional endemic of northern Idaho, south-central Wyoming, and north-central Colorado (Grand, Routt and Jackson counties)
- Last observed in Colorado: 2009
- Colorado occurrences: 17 (4 are historical)
- Colorado individuals: >5300
- Primary threats: recreational use of habitat
- Land ownership/management: USFS, state, private

Ipomopsis aggregata
var. weberi
Weber's scarlet gilia

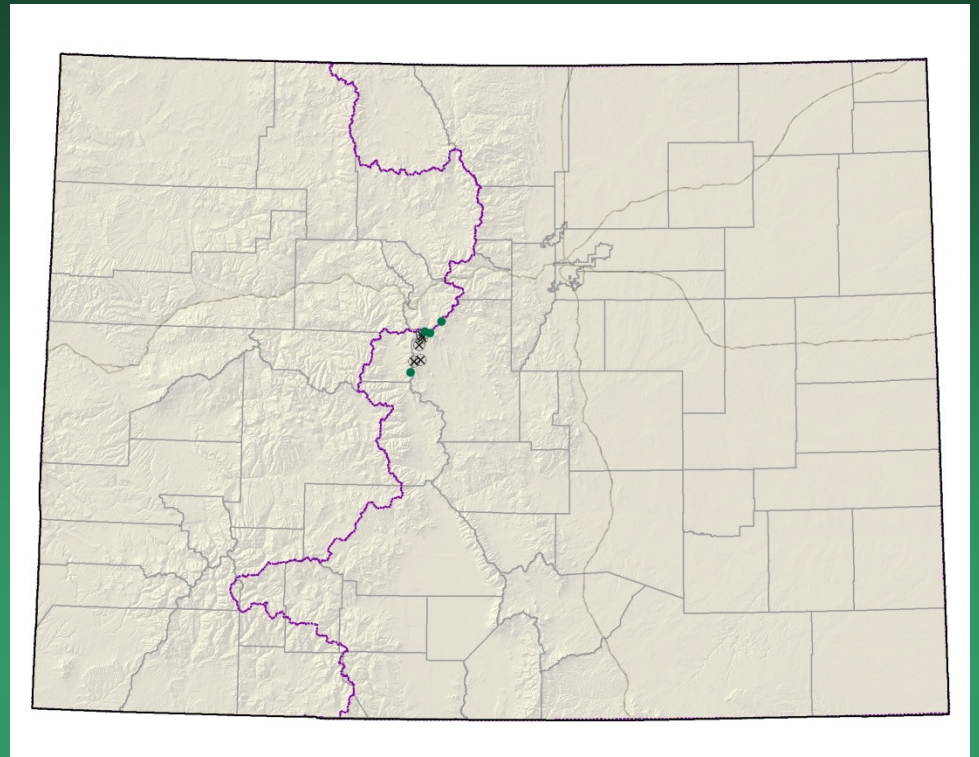
- Federal status: BLM Sensitive, USFS R2 Sensitive
- Heritage ranks: G2?/S1
- Last observed in Wyoming: 2009
- Wyoming occurrences: 1-5?
- Primary threats: grazing, shrub encroachment
- Land ownership/management: BLM Rawlins FO?, Medicine Bow-Routt NF? State?



Ipomopsis aggregata ssp. *weberi*



Ipomopsis globularis globe gilia

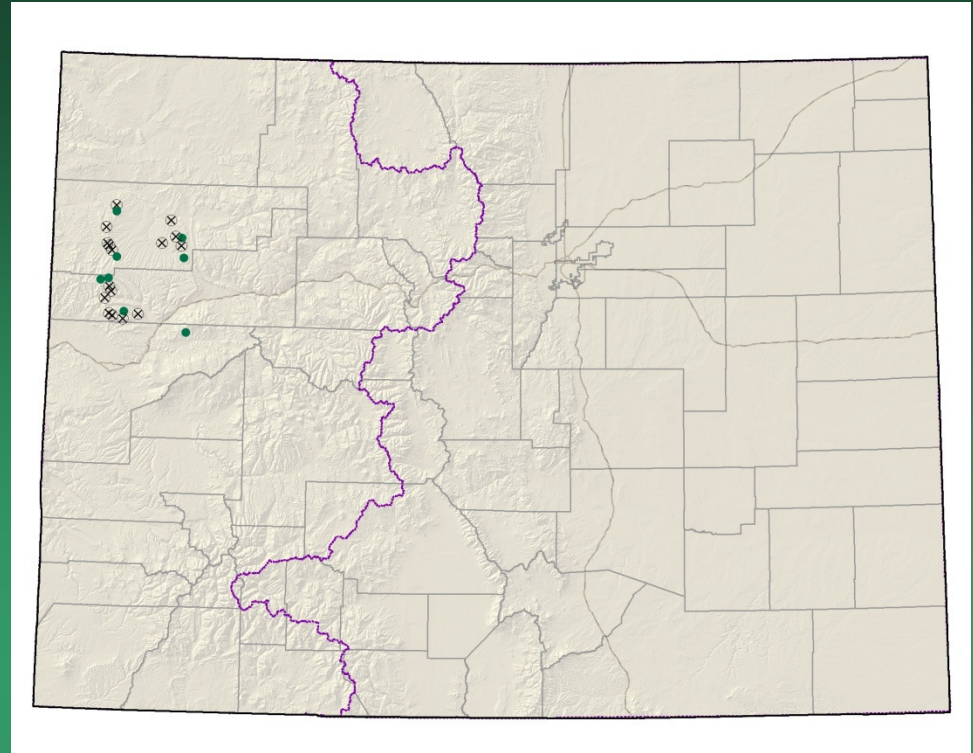


- Federal status: USFS sensitive
- Heritage ranks: G2/S2
- Global distribution: Colorado endemic (Lake, Park, and Summit counties)
- Last observed in Colorado: 2008
- Colorado occurrences: 9 (5 are historical)
- Colorado individuals: estimated 6,000 - 11,000
- Primary threats: motorized recreation, mining development
- Land ownership/management: USFS

Ipomopsis globularis



Lesquerella parviflora
Piceance bladderpod



- Federal status: BLM sensitive
- Heritage ranks: G2/S2
- Global distribution: Colorado endemic (Rio Blanco, Garfield, and Mesa counties)
- Last observed in Colorado: 2007
- Colorado occurrences: 24 (16 are historical)
- Colorado individuals: >230,000
- Primary threats: Oil shale mining and oil and gas development
- Land ownership/management: BLM, private, state, USFS



Lesquerella parviflora

Limnorchis zothecina
(=*Platanthera zothecina*)
alcove bog orchid



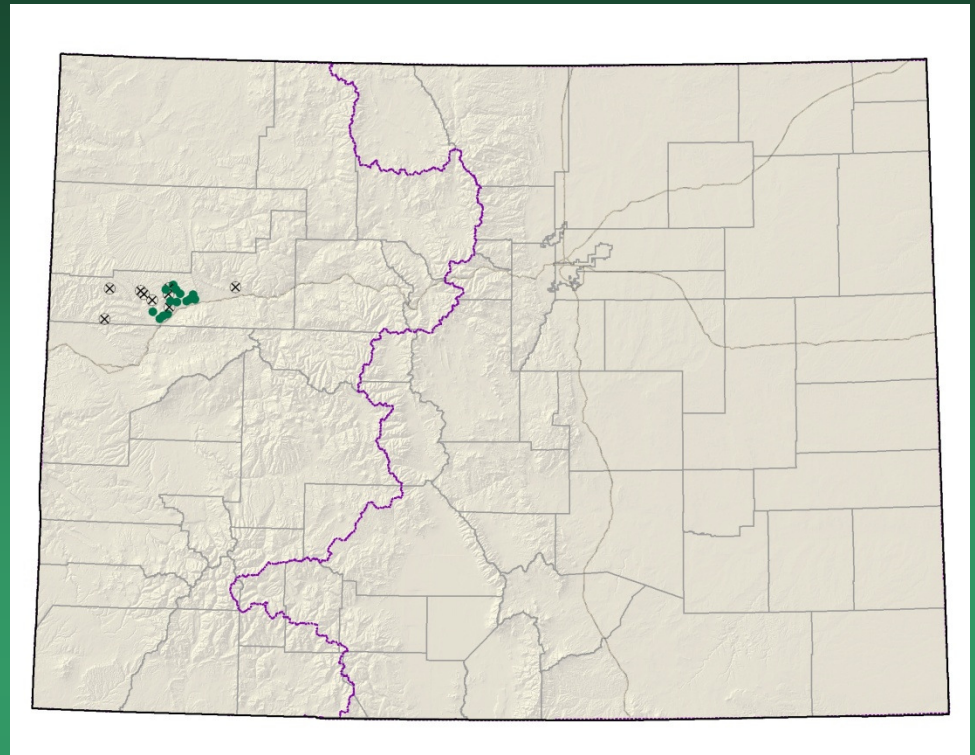
- Federal status: none
- Heritage ranks: G2/S1
- Global distribution: Utah, Arizona, and Colorado (Moffat County)
- Last observed in Colorado: 1989
- Colorado occurrences: 3 (2 are historical)
- Colorado individuals: ~100
- Primary threats: none known
- Land ownership/management: NPS

Limnorchis zothecina



Mentzelia rhizomata

Roan Cliffs blazing star

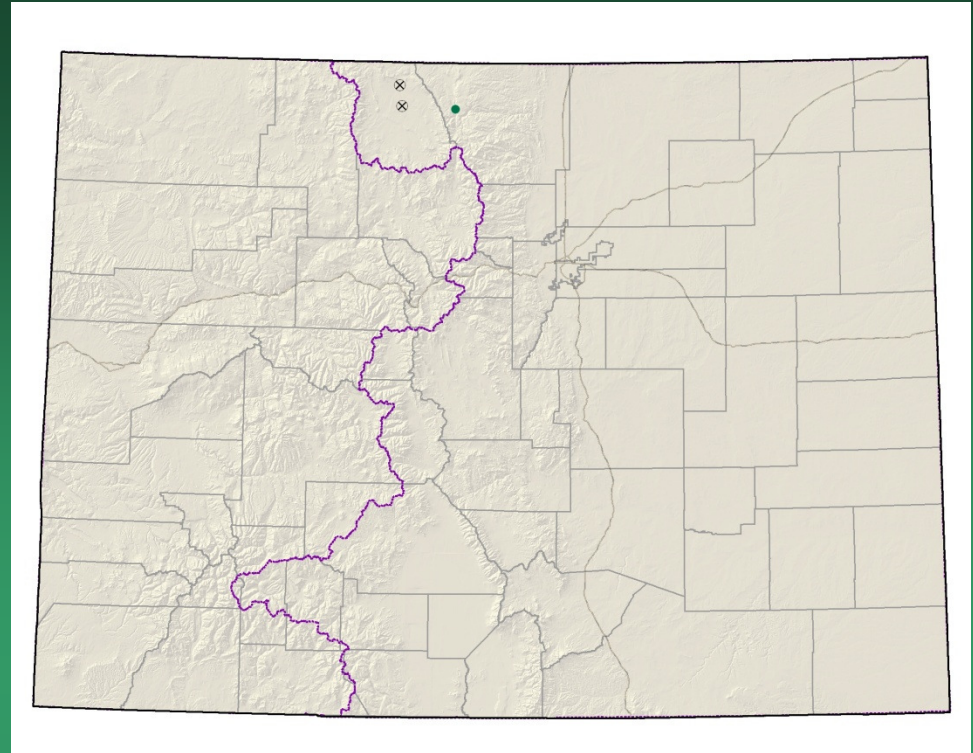


- Federal status: none
- Heritage ranks: G2/S2
- Global distribution: Colorado endemic (Rio Blanco County)
- Last observed in Colorado: 2001
- Colorado occurrences: 24 (9 are historical)
- Colorado individuals: >24,500
- Primary threats: Oil shale mining and oil and gas development
- Land ownership/management: BLM, private

Mentzelia rhizomata

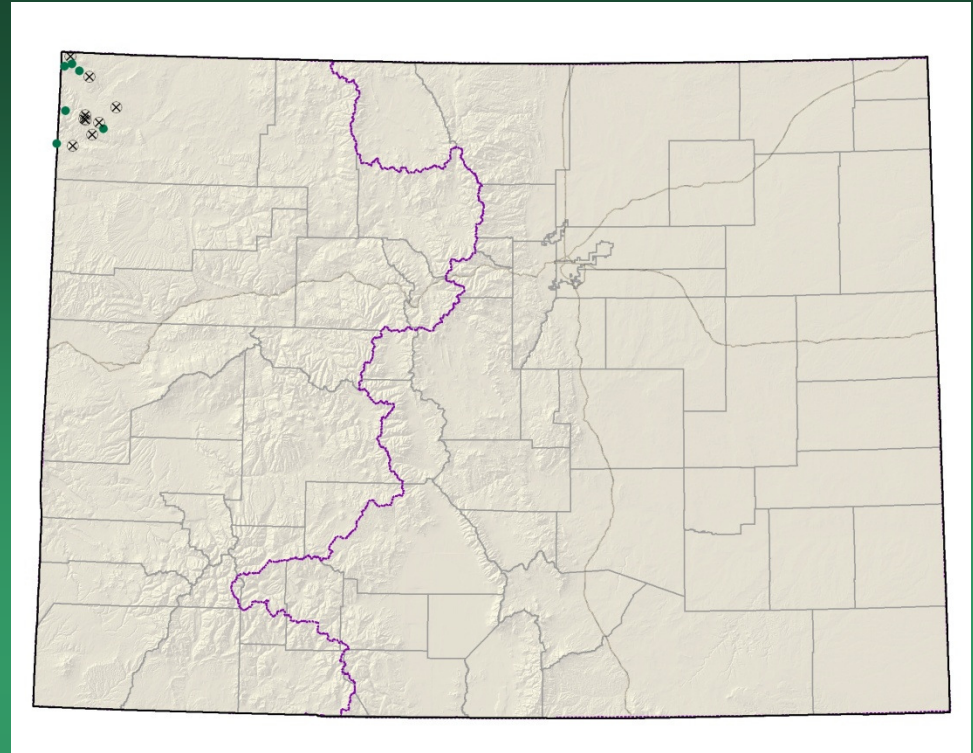


Mertensia humilis Rocky Mountain bluebells



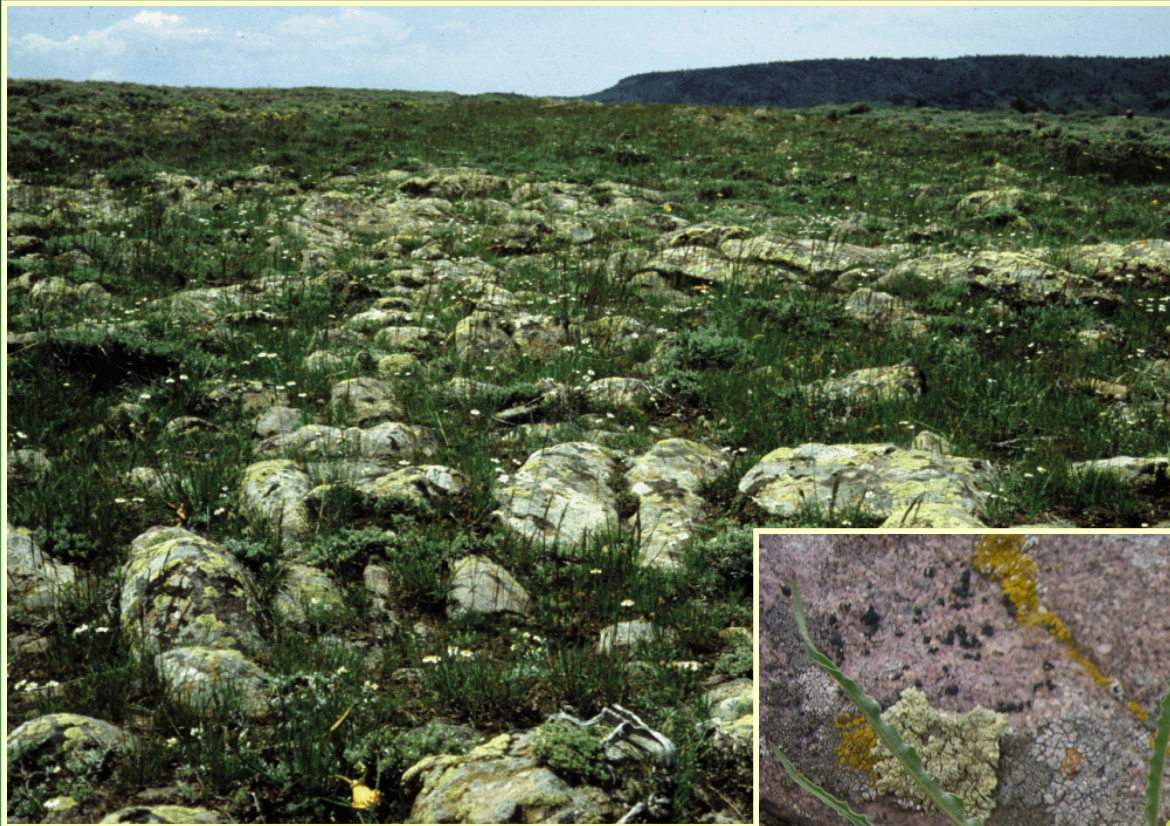
- Federal status: none
- Heritage ranks: G2/S1
- Global distribution: Wyoming and Colorado (Jackson and Larimer counties)
- Last observed in Colorado: 2001
- Colorado occurrences: 3 (2 are historical)
- Colorado individuals: unknown
- Primary threats: none known
- Land ownership/management: private, USFS

Oenothera acutissima
narrow-leaf
evening-primrose

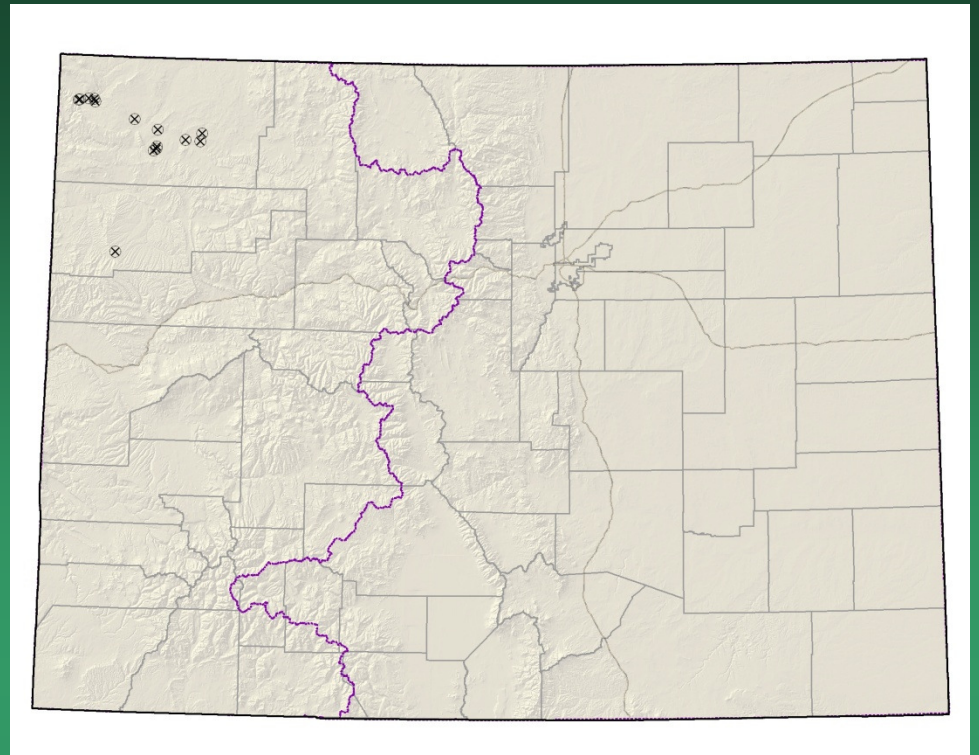


- Federal status: BLM sensitive
- Heritage ranks: G2/S2
- Global distribution: Utah and Colorado (Moffat County)
- Last observed in Colorado: 2008
- Colorado occurrences: 15 (9 are historical)
- Colorado individuals: >4,000
- Primary threats: hydrologic alteration, habitat degradation from livestock use
- Land ownership/management: BLM, state, private, NPS

Oenothera acutissima



Oxytropis besseyi var.
obnapiformis
Bessey's locoweed

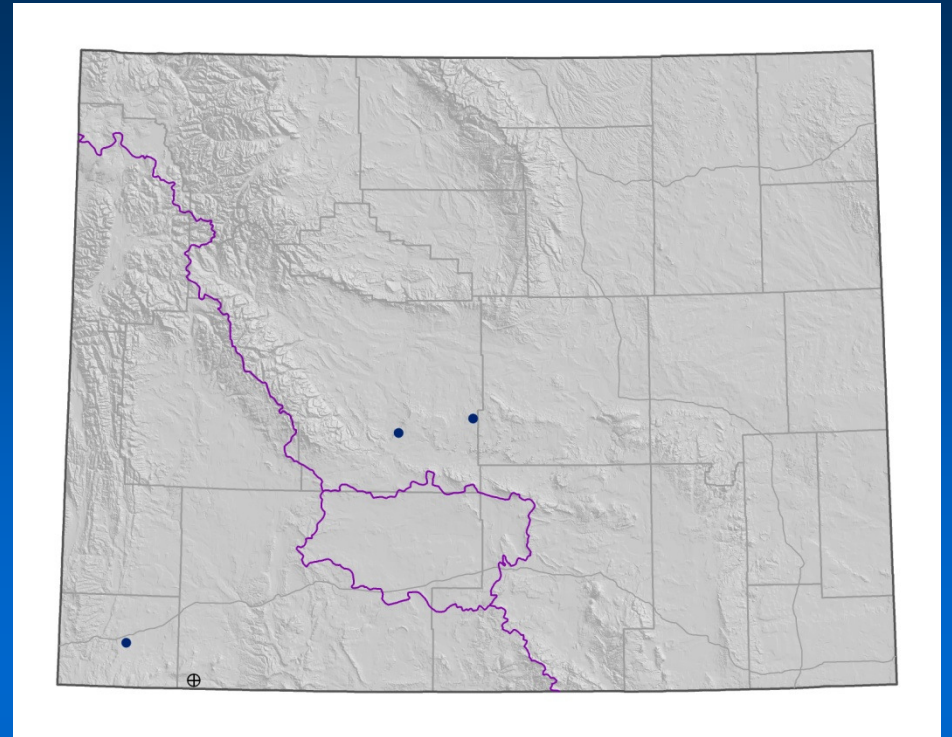


- Federal status: none
- Heritage ranks: G5T2/S2
- Global distribution: Utah, Wyoming, and Colorado (Moffat and Rio Blanco Cos.)
- Last observed in Colorado: 1988
- Colorado occurrences: 14 (all are historical)
- Colorado individuals: unknown, perhaps in the 100s
- Primary threats: oil and gas development
- Land ownership/management: BLM, NPS, private

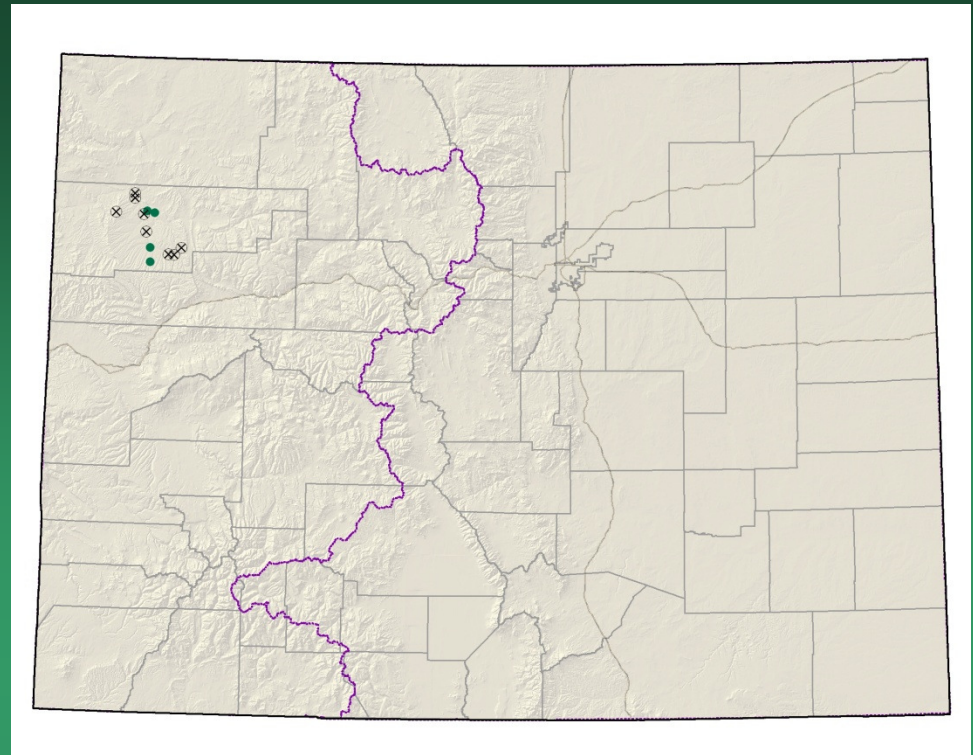
Oxytropis besseyi var.
obnapiformis

Maybell locoweed or
Bessey's locoweed

- Federal status: None
- Heritage ranks: G5T2/S1
- Last observed in Wyoming: 1997
- Wyoming occurrences: 4 (1 historic)
- Primary threats: mining, OHV
- Land ownership/management: BLM
Kemmerer FO, BLM Lander FO, State



Penstemon fremontii
var. glabrescens
Fremont's beardtongue

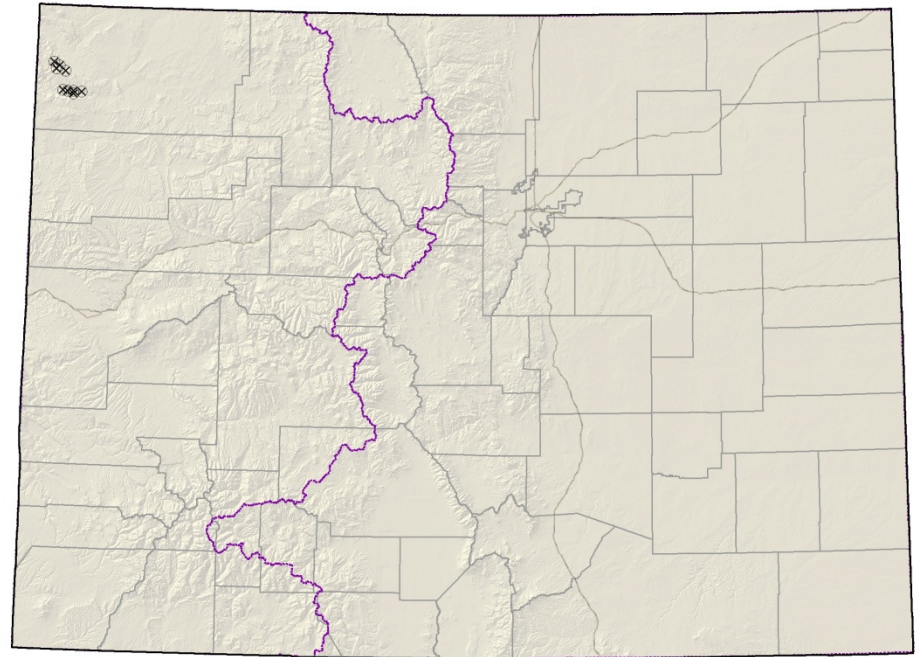


- Federal status: none
- Heritage ranks: G3G4T2/S2
- Global distribution: Colorado endemic (Rio Blanco County)
- Last observed in Colorado: 1991
- Colorado occurrences: 12 (8 are historical)
- Colorado individuals: unknown
- Primary threats: oil and gas development
- Land ownership/management: BLM, state

Penstemon fremontii var. *glabrescens*



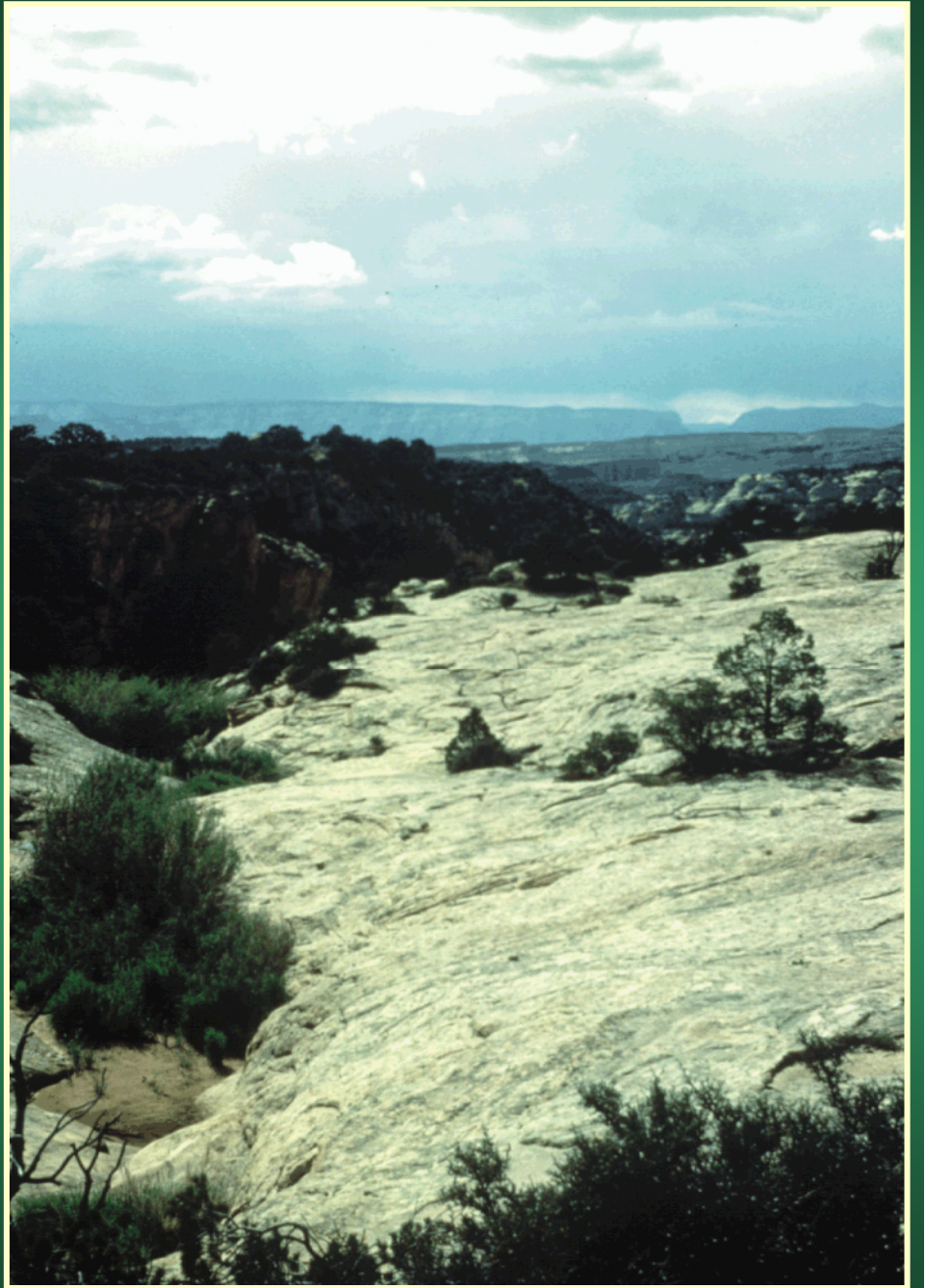
Penstemon scariosus
var. cyanomontanus
Blue Mountain beardtongue



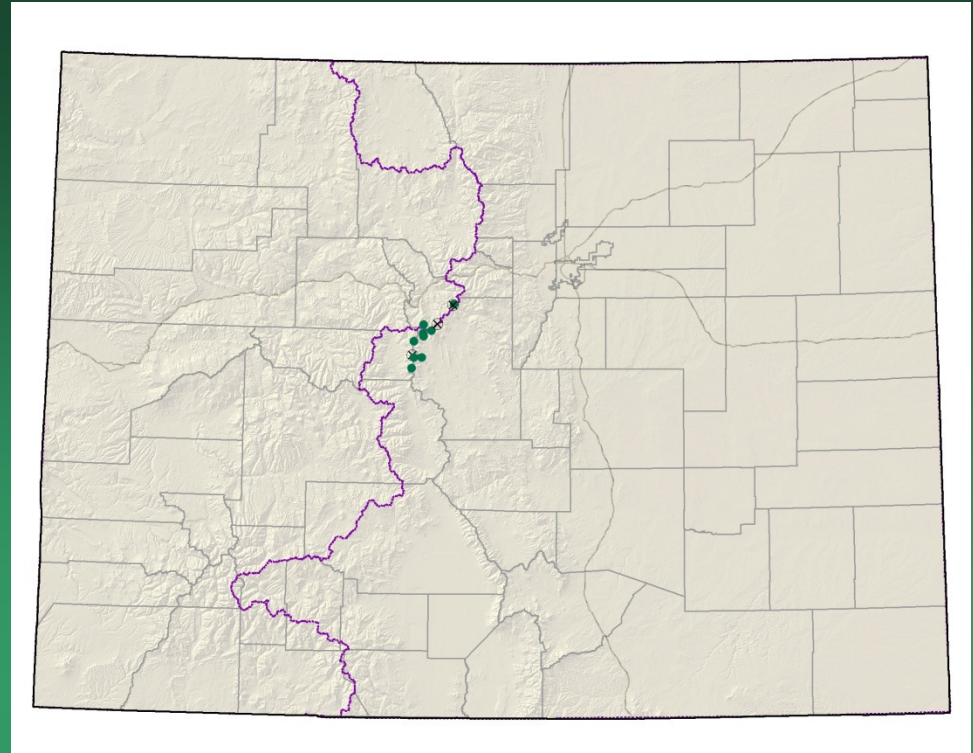
- Federal status: none
- Heritage ranks: G4T2/S2
- Global distribution: Utah and Colorado (Moffat County)
- Last observed in Colorado: 1988
- Colorado occurrences: 9 (all are historical)
- Colorado individuals: >16,000
- Primary threats: incompatible grazing
- Land ownership/management: NPS, BLM



Penstemon scariosus var. *cyanomontanus*



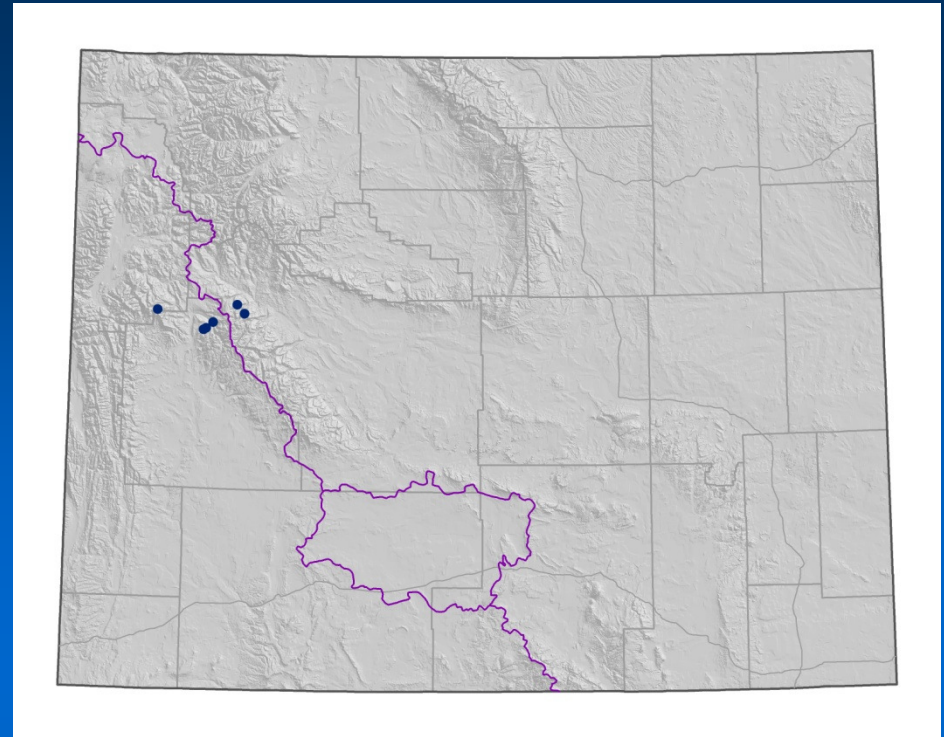
Saussurea weberi Weber's saw-wort



- Federal status: BLM sensitive
- Heritage ranks: G2G3/S2
- Global distribution: Regional endemic of southwest Montana, northwest Wyoming, and central Colorado (**Custer**, Park and Summit counties)
- Last observed in Colorado: **2009**
- Colorado occurrences: **13** (3 are historical)
- Colorado individuals: >6300
- Primary threats: may be threatened by mining and alpine grazing
- Land ownership/management: USFS, private

Saussurea weberi Weber's saw-wort

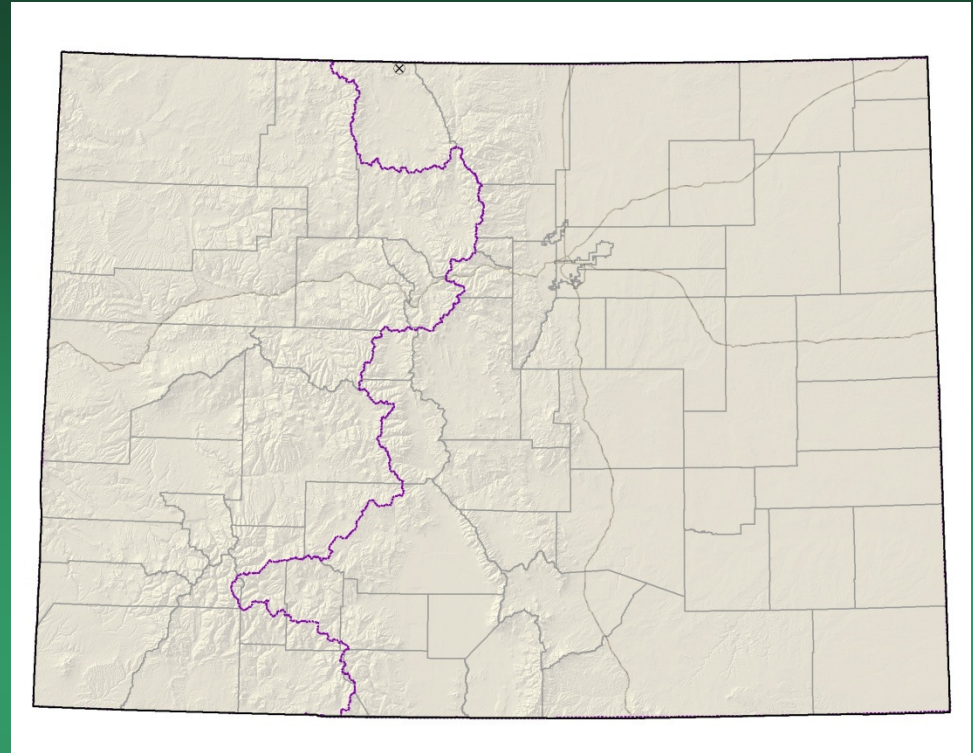
- Federal status: USFS R4 Sensitive
- Heritage ranks: G2G3/S2
- Last observed in Wyoming: 2006
- Wyoming occurrences: 6
- Primary threats: possibly recreational use
- Land ownership/management: Bridger-Teton NF, Shoshone NF



Saussurea weberi



Thelypodium paniculatum Northwest thelypody



- Federal status: none
- Heritage ranks: G2/SH
- Global distribution: Idaho, Montana, Wyoming, and Colorado (Jackson County)
- Last observed in Colorado: 1903
- Colorado occurrences: 1 historical
- Colorado individuals: unknown
- Primary threats: altered hydrology?
- Land ownership/management: USFS

Thelypodium paniculatum

No photo available

Thanks to all who have contributed pictures to the presentations

Dave Anderson

John Anderson

Janet Coles

Carolyn Crawford

Carol Dawson

Robert Dorn

Georgia Doyle

Dean Earhard

Ron Hartman

Ken Heil

Bill Hevron

Janis Huggins

Bill Jennings

Barry Johnston

W. Kelley

Kevin Kovacs

Andy Kratz

Paula Lehr

Peggy Lyon

Betsy Neely

Stephanie Neid

Steve O'Kane

Steve Olson

Susan Panjabi

J.S. Peterson

R. Price

David C. Reed

James Reveal

Renée Rondeau

John Sanderson

Bobbi Siems

Bob Sivinski

Scot Smith

Joe Stevens

J. Stewart

T. Todsén

Phil Tonne

April Wasson

Lorraine Yeatts

Colorado Natural Heritage Program

The Nature Conservancy

And others – let us know if you recognize a photo

Colorado Natural Heritage Program:
www.cnhp.colostate.edu
cnhpblog.blogspot.com

Jill.Handwerk@colostate.edu
Susan.Panjabi@colostate.edu