

Light collection and wavelength calibration for an extreme ultraviolet diode array spectrograph

M. C. Marconi, J. F. Schmerge, and J. J. Rocca

Electrical Engineering Department, Colorado State University, Fort Collins, Colorado 80526

(Received 19 September 1988; accepted for publication 3 January 1989)

We describe the use of a simple spherical aluminum-coated mirror to image the radiation of a distant XUV-emitting plasma in the slit of a vacuum spectrograph. Calculations to determine the optimum position and curvature radius of the mirror as a function of the divergence of the emitted plasma radiation are described. Efficient light collection by the grazing incidence mirror allows calibration of an intensified diode array used as a detector with a low-pressure (10^{-4} Torr) dc capillary discharge that does not require a complex differential pumping system.

The spectroscopic study of the light emitted by a plasma is a powerful tool to determine its physical characteristics. Important data from dense plasmas can be obtained at extreme ultraviolet (XUV) wavelengths where the plasma is generally optically thin allowing the recording of well-defined line spectra. However, working in this spectral region requires the use of experimental procedures that complicate the detection setup compared with visible light spectroscopy. For example, optical windows are not available and lenses cannot be used to focus the radiation.^{1,2} Mirror systems are commercially available to increase the light gathering capabilities of XUV spectrographs but they are relatively expensive.³

Here, we describe the use of an inexpensive spherical aluminum-coated mirror to image the divergent extreme ultraviolet radiation from a plasma source into the slit of a vacuum spectrograph. The position and width of the produced image depends strongly on the divergence of the radiation produced by the source. It also depends on the curvature radius of the mirror, the distance between the mirror and the source, and the grazing incidence angle. We describe a program developed to calculate, from geometrical considerations, the image position obtained by a spherical mirror from a divergent source taking into account the incidence angle and the curvature radius of the mirror. The program also allows the calculation of the required radius of curvature for the mirror, considering that the distance between the plasma source and the spectrometer is fixed. The experimental implementation and the results obtained are also discussed.

We have recently proposed the plasma of highly ionized capillary discharges as a laser source in the XUV and soft x ray.⁴ Capillary discharges can create dense highly ionized plasmas with relatively modest excitation energy.⁵ Rapid plasma cooling occurring at the decay of the discharge pulse is expected to result in large electron-ion recombination rates and the possibility of optical gain at short wavelengths. To study the capillary plasma and the possibility of XUV amplification, we are using a 1-m normal incidence $f = 10.4$ vacuum spectrograph in order to analyze the emitted light in the VUV and XUV region. The detector used in the spectrograph is an optical multichannel analyzer (OMA) com-

posed of two multichannel plate intensifiers stacked in front of a 1024 photodiode array. The detector is similar to other windowless multichannel plate array detectors described in the literature^{6,7} but with the difference that it contains two close-spaced multichannel plates for increasing the sensitivity. The front surface of the first multichannel plate, which faces the light, is coated with copper iodide for increased VUV and XUV response.⁸ A second multichannel plate is placed behind the front plate to achieve additional electron multiplication and a gain as high as 10^7 .⁹ Electrons emerging from the second plate are accelerated towards a phosphorus screen where they produce optical radiation which is guided by a fiber optic bundle and detected by the photodiode array. The multichannel plate intensifier was provided by Galileo Electro Optics (Sturbridge, MA) and interfaced to an array of 25- μm diodes manufactured by Princeton Instruments. The detector is placed in the focal plane of the spectrograph allowing the simultaneous recording of a spectrum 420 Å wide, using a 600-lines-per-mm grating. The resolution of the system with this grating is 0.41 Å per channel.

The windowless OMA is connected to a personal computer which digitalizes and stores the acquired data. The detection system involves electronics which should be protected from the electromagnetic noise produced by the fast high-current discharge, so the entire detection system is located inside a Faraday enclosure. The spectrograph is also located inside this electromagnetic shield, and its entrance slit is located more than 1-m from the plasma source. Consequently, light collection for an entrance slit width of the order of 20 μm is small, and some kind of focusing device is necessary to increase the signal.

A scheme of the light collection system we implemented is shown in Fig. 1. Light collection by the spherical grazing incidence mirror is very efficient, producing a vertical linear image that matches the vertical entrance slit of the spectrograph. The use of the focusing mirror has the extra advantage of stopping the particles emitted by the expanding plasma protecting in this way the expensive spectrograph diffraction grating. This avoids the use of complex fast shutters to stop the plasma particles.¹⁰ The relatively inexpensive mirror can be cleaned or eventually replaced if damage occurs by particle deposition.

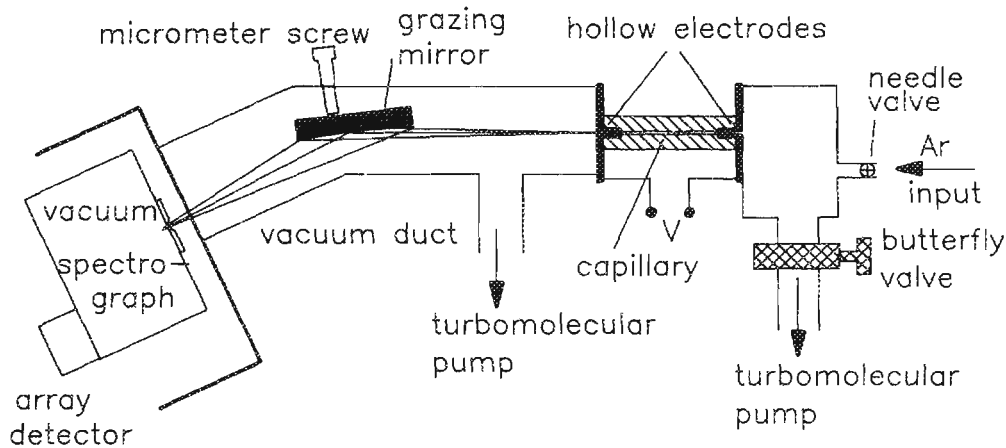
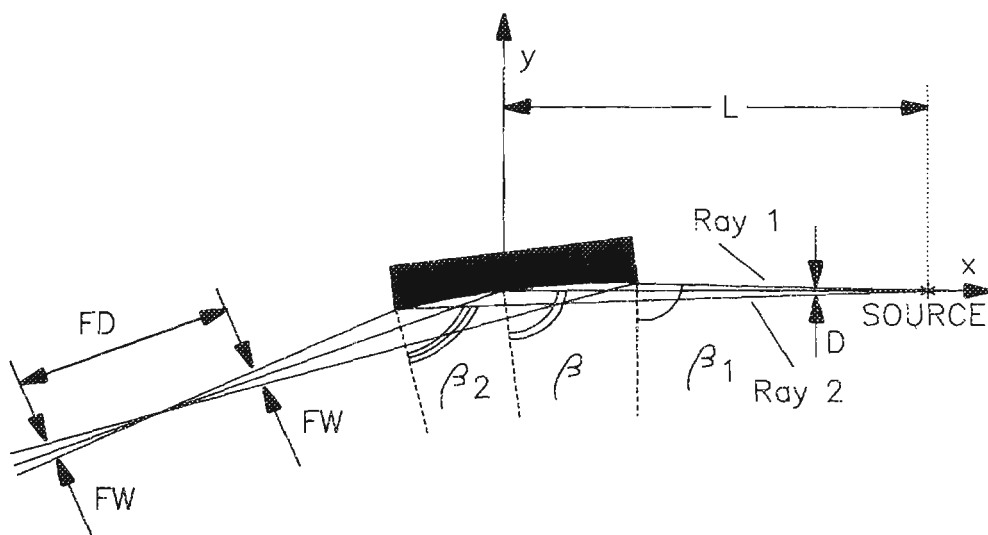


FIG. 1. (a) Experimental setup showing the grazing incidence mirror used to image the radiation in the spectrograph slit. (b) Detail of the mirror assembly showing the parameters used in the code listed in Appendix A.



For design calculations purposes in the case of a capillary plasma, we considered the divergence of our source as the average value obtained by calculating the solid angle subtended from the center of the capillary. For our purposes this is a good approximation of the divergence of the incoherent plasma radiation. The code listed in Appendix A¹¹ calculates the path of the two extreme beams incident on the mirror edges and the central beam [Fig. 1(b)]. Working in grazing incidence, the mirror does not perfectly focus these three beams at the same point. However, the deviation from a perfect focus can be neglected since it is usually small. Nonetheless, the program estimates the image sharpness and calculates the focal depth. From the three calculated paths, the program determines the locations where the image has a given transverse size. The values obtained with the program were experimentally verified within a measurement error of less than 5% using a HeNe plasma tube as the incoherent light divergent source. This plasma has a divergence similar to our capillary discharge.

We used the code to design the light collection system for our vacuum spectrograph located at 1.41 m from a 500- μm -diam 40-mm-long capillary discharge. After running the code we selected for our experiment a 3-m-curvature radius aluminum-coated mirror of 1.5 in. diam placed at 56 cm from the discharge and giving an image at 85 cm from the

mirror. The image in this case has a width less than 100 μm within a 0.6-cm-region centered in the focal point. The mirror was placed vacuum-mounted in a holder which allows adjustment of the incidence angle. The vacuum duct is fixed in such a way that the grazing angle on the mirror is 13° [that gives a reflectivity for aluminum better than 60% for wavelengths as low as 530 \AA (Ref. 12)]. A micrometer screw permits, through a vacuum feedthrough, the final adjustment of the angle, thereby fixing the final image position on the spectrograph slit. Easy alignment of the system is achieved by visually observing the relative position of the focal line of the visible radiation reflected by the mirror with respect to the spectrograph slit through a window built in front of the spectrograph for that purpose.

The efficient light collection by the mirror allows the wavelength calibration of the instrument using a low-pressure low-current dc capillary discharge. This low-pressure discharge produces enough light to calibrate the system. In comparison with previously used high-pressure capillary discharges, the low-pressure discharge has the advantage that no differential pumping other than the one provided by the discharge capillary and spectrograph slit itself is necessary allowing a pressure of 1×10^{-4} Torr in the capillary region and at the same time a pressure of 1×10^{-6} Torr in the spectrograph. In this regime a dc discharge can be estab-

lished in the capillary by applying 15 kV between the electrodes. For calibration purposes we used a 20-mA argon discharge through a 500- μm , 4-cm capillary. Two hollow graphite electrodes are positioned at each end of the capillary allowing a clear optical path for light collection. The capillary was pumped from both ends using a 400- ℓ/s turbomolecular pump. Argon gas is admitted through a needle valve to the capillary end opposite the spectrograph and is pumped through the discharge channel in such a way that a continuous flux of argon can be established in the capillary. The Ar spectra allow a very easy and accurate calibration of the system in the VUV and XUV with no extra equipment than the discharge setup. Other gases can also be used to obtain other calibration spectra at different wavelengths if necessary. A typical extreme ultraviolet calibration spectrum obtained is presented in Fig. 2 where 18 lines of ArII and ArIII can be easily identified, permitting a precise calibration of the detector array spectrograph. To obtain these spectra the back face of the second multichannel plate, which faces the phosphorus screen, is grounded and the screen is positively biased to 4 kV with a dc power supply. The front face of the second plate is biased negatively to -850 V and -800 V is applied across the first multichannel plate. The main advantage of this calibration method is the simplicity, and in our case the fact that the same capillary

structure that is the subject of our present study is used in the calibration procedure allowing an *in situ* wavelength calibration and a good optical alignment of the system. If required, an absolute intensity calibration in the extreme ultraviolet could be obtained by the method of branching ratios of visible and XUV transitions having the same upper level using a calibrated visible monochromator to measure the intensity of the radiation emitted through the other end of the capillary.

The high light-collection efficiency of the spherical mirror allows time-resolved single shot XUV spectra of the emission of a short pulse (50 ns FWHM) capillary discharge excited with only a few Joules of energy. A time-resolved single shot spectrum from the axial emission of a lithium hydride capillary discharge 500 μm diam and 40 mm in length excited by a 5 J current pulse is shown in Fig. 3. The spectrum was obtained by gating the gain of the front multichannel plate with a 15-ns pulse centered at 23 ns after the peak current of a 50 ns FWHM, 5-kA discharge current pulse. To record these spectra, a negative bias of 780 and 180 V were applied across the second and first multichannel plate, respectively. With this low bias voltage across the first plate the gain of the detector is very low, and no light is detected. Switching of the gain is achieved by increasing the voltage drop across this plate by applying an additional

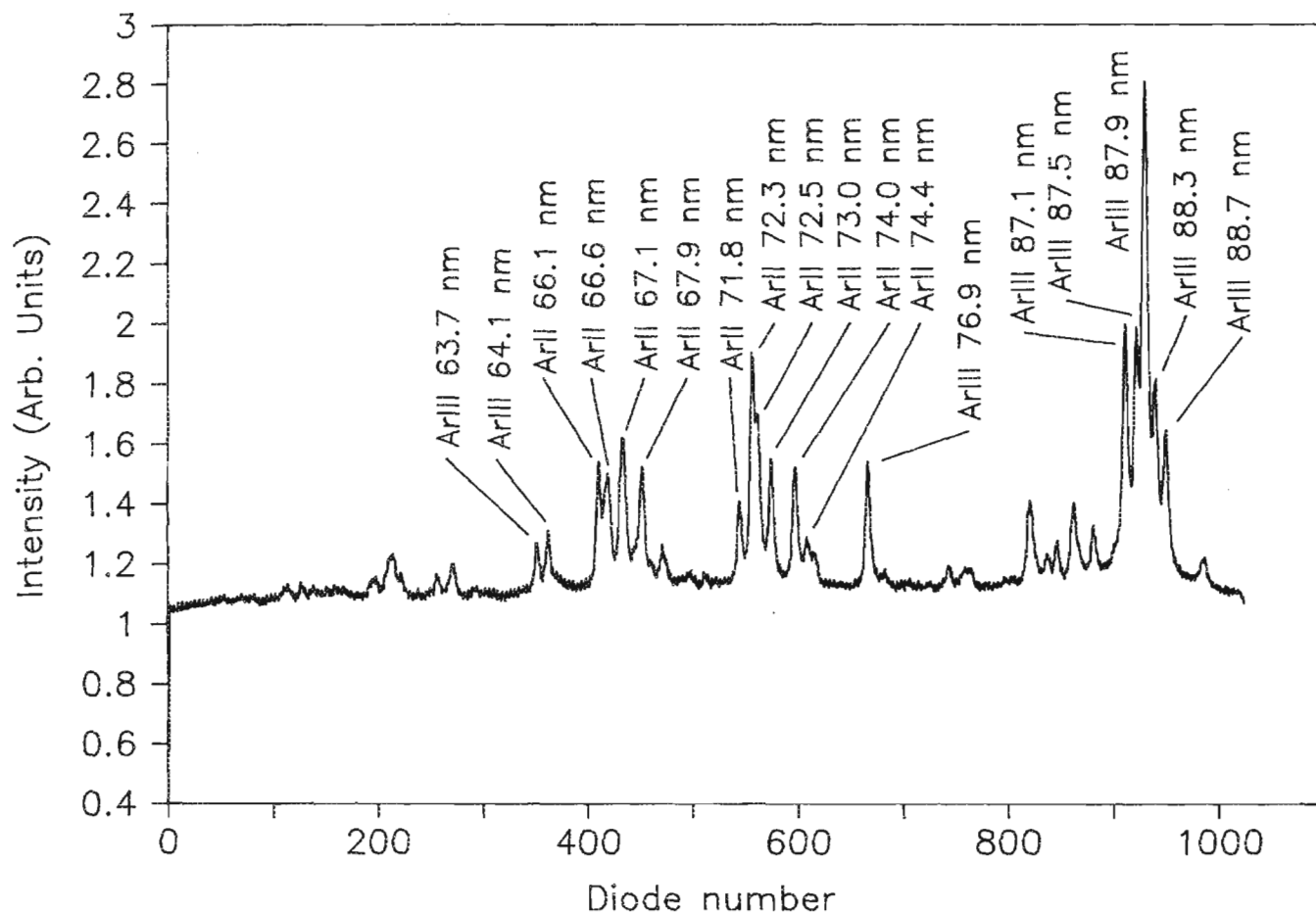


FIG. 2. Extreme ultraviolet calibration spectrum obtained from a low-pressure dc Ar capillary discharge.

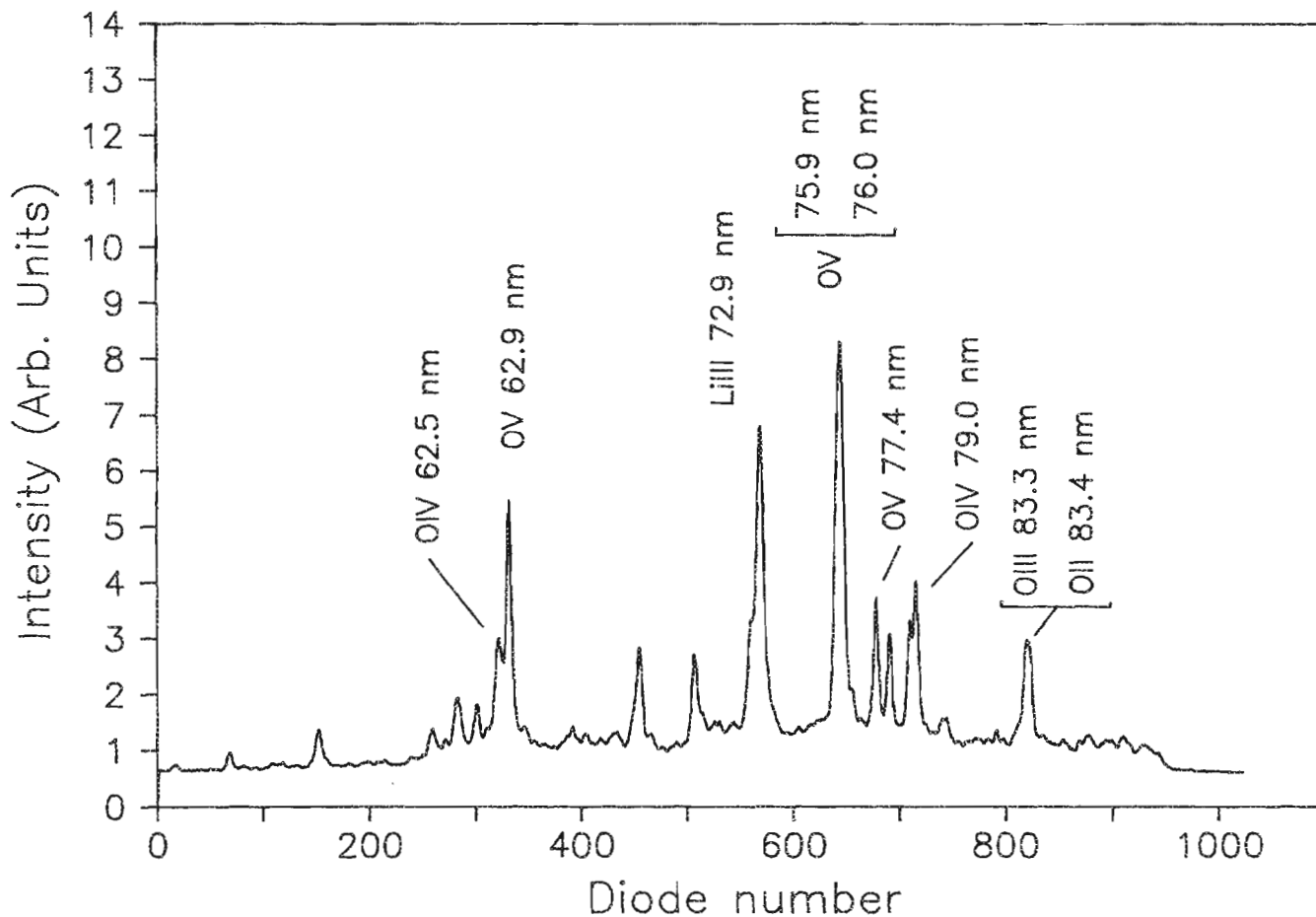


FIG. 3. Time-resolved single shot XUV spectrum from the axial emission of a LiH capillary discharge.

— 500-V pulse. This scheme has the advantage of reducing the voltage requirements of the pulser to 500 V allowing its implementation by discharging a transmission line through a commercially available switch. The switch that discharges the transmission line into the plate uses a single MOSFET and is manufactured by Directed Energy (Fort Collins, CO).¹³ The length of the transmission line determines the width of the pulse, which in our experiment was 15 ns. The LIII 729-Å line and multiple ionized oxygen impurity lines are easily identified based on the Ar calibration spectra of Fig. 2.

This work was supported by the National Science Foundation Grant No. ECS 8606226. M. C. Marconi was supported by a fellowship from Universidad Nacional de Buenos Aires and Consejo Nacional de Investigaciones Científicas y Técnicas de la República Argentina. We acknowledge George J. Krausse from Directed Energy Inc. for his valuable assistance with the construction of the fast high-voltage pulser used to gate the multichannel plate and Y. Talmi from Princeton Instruments for fruitful discussions. J.J.R. is a National Science Foundation Presidential Young Investigator.

¹A. N. Zaidel and E. Ya. Shreider, *Vacuum Ultraviolet Spectroscopy* (Humphrey Science, London, 1970).

²J. A. R. Samson, *Techniques of Vacuum Ultraviolet Spectroscopy* (Wiley, New York, 1967).

³Acton Research Corporation Catalog, Box 215, 525 Main Street, Acton, MA 01720.

⁴J. J. Roeca, D. C. Beethe, and M. C. Marconi, *Opt. Lett.* **13**, 565 (1988).

⁵P. Bogen, H. Conrands, G. Gatti, and W. Kohlhaas, *J. Opt. Soc. Am.* **58**, 2 (1968); R. A. McCorkle, *Appl. Phys. A* **26**, 261 (1981).

⁶J. Fonk, A. T. Ramsey, and R. V. Yelle, *Appl. Opt.* **21**, 2115 (1982).

⁷D. F. Register, G. L. Jackson, and S. E. Walker, in *5th Topical Conference on High Temperature Plasma Diagnostics*, edited by E. M. Campbell and G. W. Leppelmeier (AIP, New York, 1985).

⁸R. K. Richards, *Rev. Sci. Instrum.* **49**, 1210 (1978).

⁹J. L. Wiza, *Nucl. Instrum. Methods* **162**, 587 (1979).

¹⁰P. R. A. Lyons, D. Kilpin, and S. L. Gai, *J. Phys. E* **17**, 108 (1984).

¹¹See AIP document No. PAPS RSINA-60-966-02 for 2 page of Appendix A computer program. Order by PAPS number and journal reference from American Institute of Physics, Physics Auxiliary Publication Service, 335 East 45th Street, New York, NY 10017. The price is \$1.50 for each microfiche (98 pages) or \$5.00 for photocopies of up to 30 pages, and \$0.15 for each additional page over 30 pages. Airmail additional. Make checks payable to American Institute of Physics.

¹²R. F. Malina and W. Cash, *Appl. Opt.* **17**, 3309 (1978).

¹³FPS3N Data Sheet, Directed Energy, 2301 Research Boulevard, Fort Collins, CO 80526.