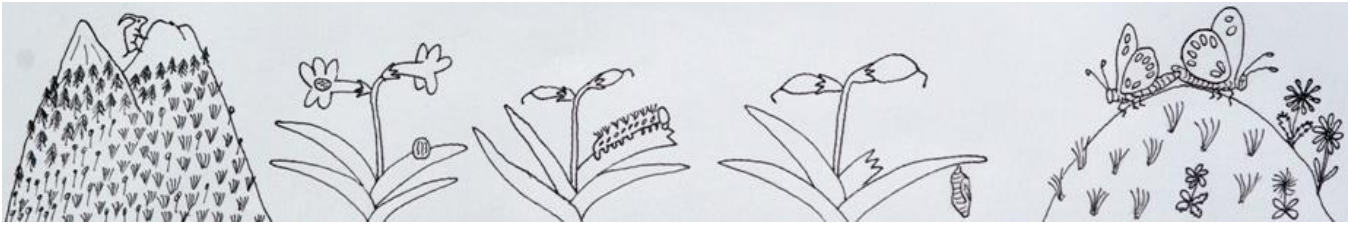


PAPILIO (NEW SERIES) # 31

2020 ISSN 2372-9449



BUTTERFLIES OF THE SOUTHERN ROCKY MOUNTAINS AREA, AND THEIR NATURAL HISTORY AND BEHAVIOR: PHOTOS OF MOSTLY EGGS LARVAE PUPAE. PART IV LYCAENIDAE

James A. Scott

These four issues of Papilio (New Series) are photos for my book “Butterflies of the Southern Rocky Mts. Area, and their Natural History and Behavior”, showing some adults but mostly early stages (eggs, 1st-stage, mature larvae, and pupae) of as many of the species as possible, primarily from the Southern Rockies area (I added a few other interesting species that do not occur in the area). They have been cropped and downsized to illustrate just the butterflies and conserve kilobytes, rather than serve as artistic images. They are arranged by evolutionary relationship, as in the book text.

Localities of photos are Colorado especially the Denver/Front Range area, unless noted. Most were taken by J. Scott, some by others.

Abbreviations: M=male, F=female, A=adult (difficult to determine sex), E=egg, L=larva (L1=1st-stage, L2=2nd-stage, L3=3rd-stage, L4=4th-stage, L5=5th-stage usually mature, L6=6th stage mature), P=pupa

Lycaenidae, Riodininae



Apodemia mormo pueblo E, L1



Apodemia nais nais F, 2E, L1

Lycaenidae, Lycaeninae, Lycaenini



Lycaena cupreus snowi M, E, L1, L4, L2-3, P dead dried



Lycaena phlaeas hypophlaeas Ontario E, L4



Lycaena helloides helloides MF, E (too pale), L4 Chaffee Co., 7P Chaffee Co.



Lycaena florus florus MF, M, M & dark F, E, E, L1, older L1, L1?, L4, L4, L4, P new, P fairly new, P, P



Lycaena hyllus=thoe F, E, L4, P new, P



Lycaena heteronea gravenotata MF, M, E, L4



Lycaena rubidus M, E, L4 Sheridan Co. Neb.



Lycaena dione E



Lycaena xanthoides "editha" vurali M, F, E



Lycaena arota virginiensis F, E

Lycaenidae, Lycaeninae, Theclini



Hypaurotis crysalus F, M, E, L3, L4, P new, P

Lycaenidae, Lycaeninae, Eumaeini



Satyrium fuliginosum semiluna M, E



Satyrium behrii crossi M



Satyrium liparops aliparops F, E



Satyrium calanus godarti L4, P; ssp. *falacer* NE Neb. L4



Satyrium saepium saepium MF, E



Satyrium californica "helenae" F, 2E



Satyrium acadica FM, E in hole, L4 Penn.



Satyrium sylvinus putnami FM, E



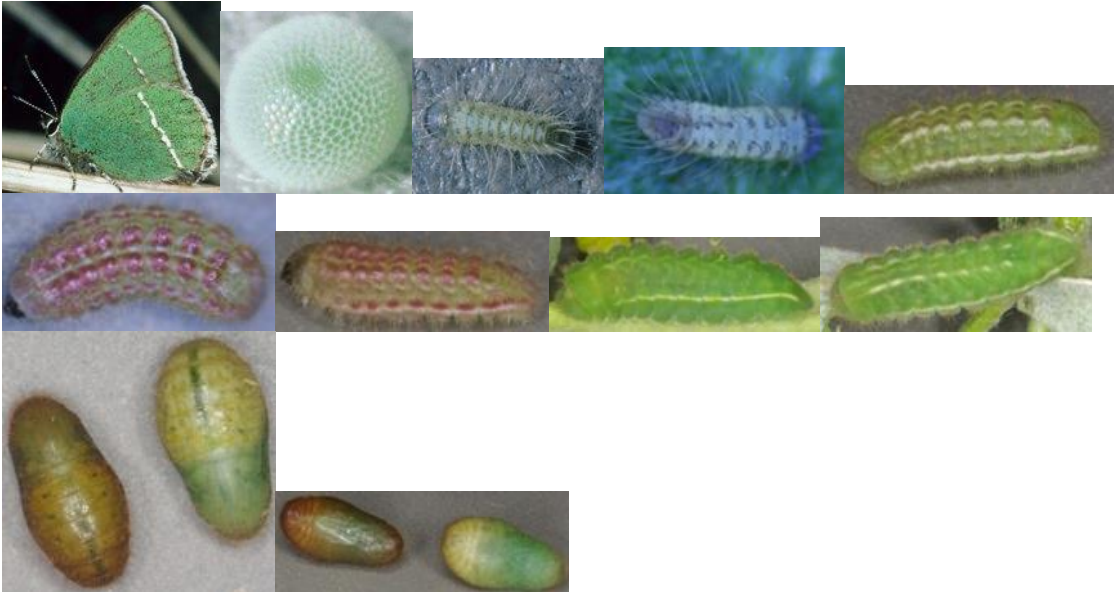
*Satyrium titus watsoni*Ximmaculosus F, E, ssp. *titus* L4 Penn.



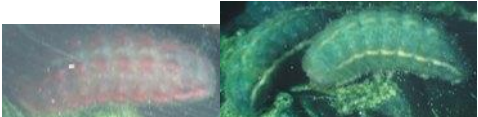
Callophrys dumetorum homoperplexa MF, E, L1, L3, L3, L3, 3P



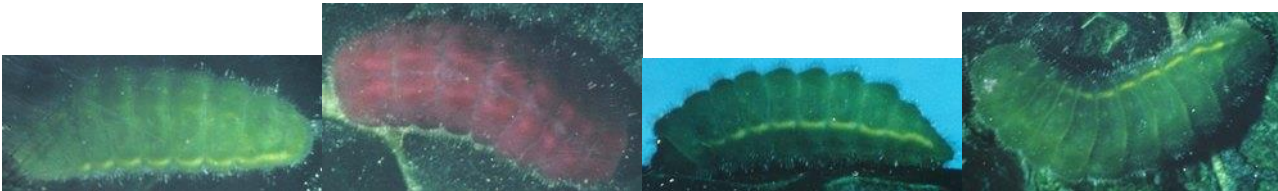
Callophrys dumetorum affinis Humboldt Co. Nev. L4



Callophrys sheridanii sheridanii M, E, L1, Grand Co.: L1, L3, L3, L3, L4, L4, 2P, 2P



Callophrys sheridanii lemberti Salmon Mts. N Calif., L4, 2L4



Callophrys sheridanii pseudodumetorum Trinity Co. Calif. L4, L4, L4, Stanislaus Co. Calif. L4



Callophrys sheridanii paradoxa Mesa Co. L4, L4, 3P, ssp. *comstocki* Clark Mtn. Calif. L4, L4



Callophrys sheridanii viridis Monterey Co. Calif. L4



Callophrys gryneus siva F, near-*siva* (some *gryneus* intergrades here) Dawson Co. Neb.



Callophrys hesseli hesseli NJ F, L4



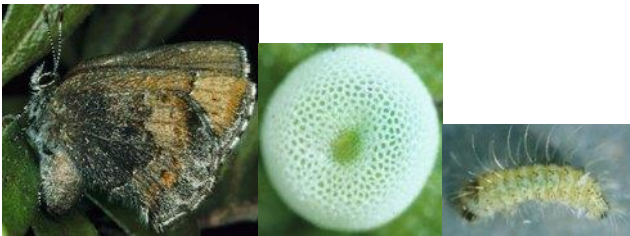
Callophrys spinetorum spinetorum M



Callophrys mossii schryveri M, 2L4, ssp. *windi* El Dorado Co. Calif. L4



Callophrys augustinus augustinus FM, E, L4 Ontario



Callophrys polios F, E, L1



Callophrys eryphon eryphon M



Callophrys niphon niphon Ontario L4



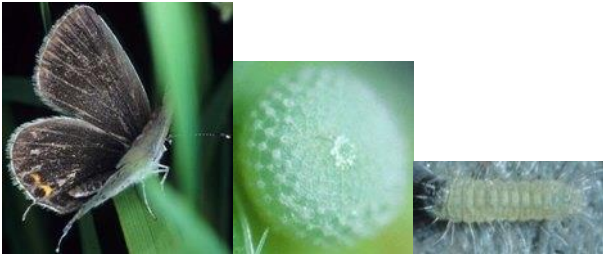
Strymon melinus melinus M, E, L1, 9L4



Lycaenidae, Lycaeninae, Polyommataini



Leptotes marina MF, E



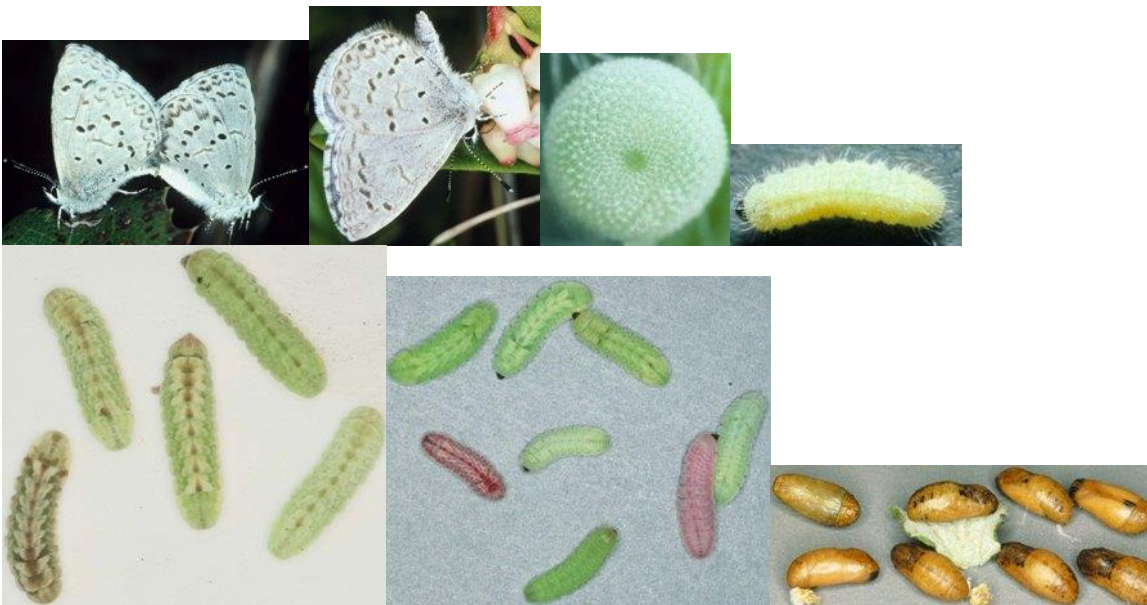
Cupido comyntas comyntas F Minn., E Iowa, L1 Minn.



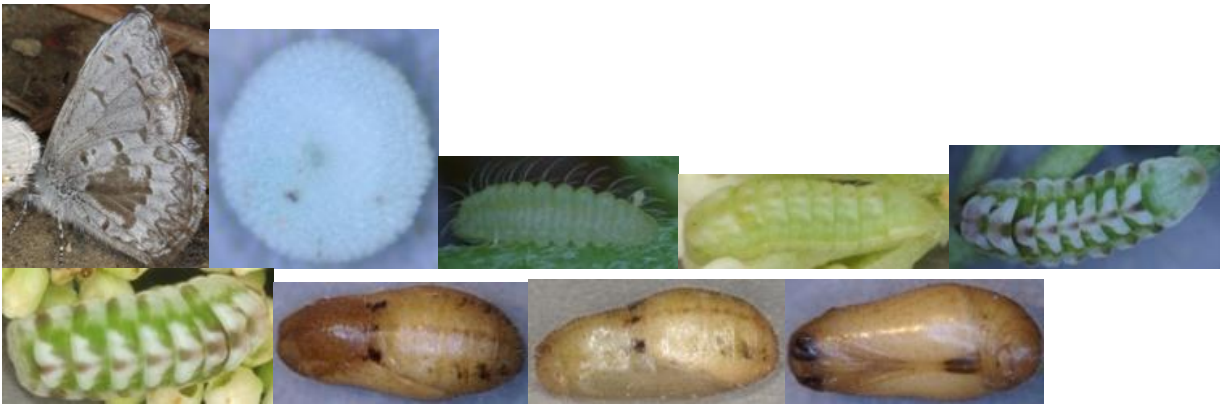
Cupido amyntula FM



Celastrina neglecta on *Prunus virginiana* leaf galls Minn. E, ~L4, L4, 2P, 2P



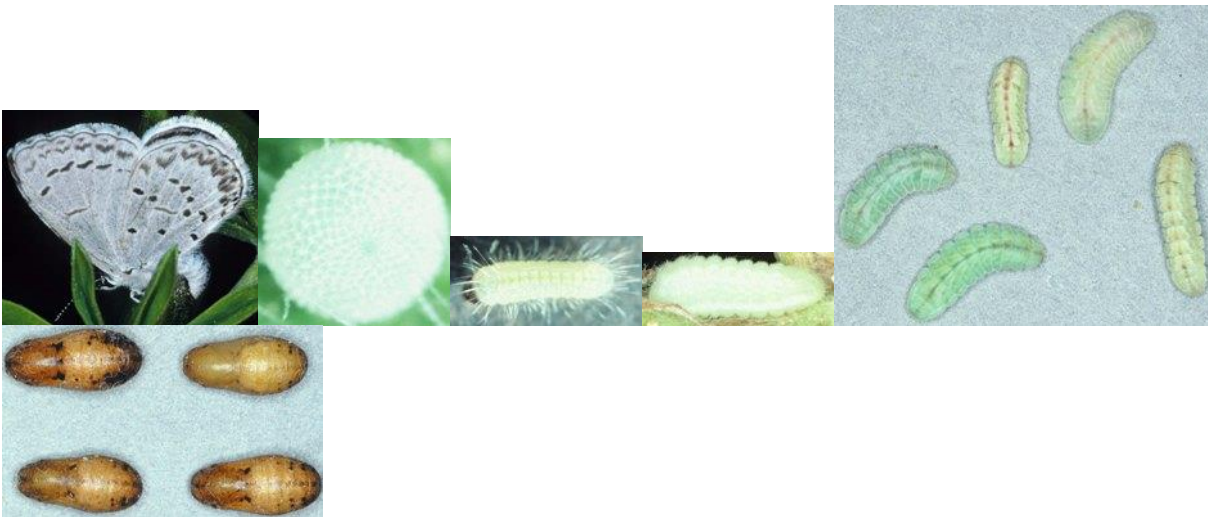
Celastrina lucia sidara MF, M on *Arctostaphylos uva-ursi*, E, L1, 5L4, 8L4, 8P



Celastrina lucia lumarco Garfield Co. Colo. M, E, L1, ~L3, L4, L4, P, P, P



Celastrina humulus hop-ecotype F ovipositing, E, L1, L4, 6L4, P, 2P



Celastrina humulus lupine-ecotype F ovip. on *Lupinus argenteus* var. ~*ingrata*, E, L1, ~L3, 5L4, 4P



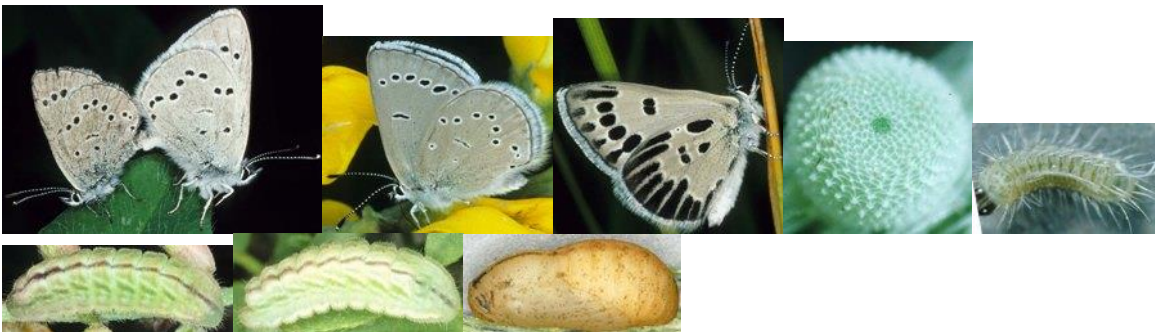
Euphilotes glaucon centralis E, ssp. *comstocki* Kern Co. Calif. MF



Euphilotes ancilla barnesi FM, E, L1



Glaucopsyche piasus daunia M mud, F, F, L1



Glaucopsyche lygdamus oro FM, M, F aberration, E, L1, L4, L4, P



Hemiargus isola F ovipositing, E, E, L1, M too dark, P too dark



Plebejus melissa melissa MF, M & crab spider, E, 2L4 Campbell Co. Wyo., P Saguache Co. Colo.



Plebejus melissa pseudosamuelis M



Plebejus atrapraetextus benwarner E



Plebejus saepiolus near-gertschi MF, F, E, E, ssp. *saepiolus* L1 Grand Co. Colo.



Plebejus icarioides lycea M, E (ssp. *pembina* Grand Co. Colo.), L1



Plebejus shasta pitkinensis E, P San Juan Mts. Colo.



Plebejus alupini texanus M, ssp. *lutzi* F



Plebejus alupini cotundra M, M, E, L1, L3, L3



Plebejus (Agriades) glandon rustica Summit Co. FM, E, L1