

• COLORADO NATURAL
HERITAGE PROGRAM •



Welcome to the 2016 CNHP Partners Meeting!



Lory Student Center Grand Ballroom B
8:00-4:00 January 14th, 2016

Welcome to CSU!



Upcoming University Projects Starting Spring 2015

Colorado State University

The map shows the following projects:

- Chemistry Research Building** (Winter 2016 - Fall 2017)
- Biology Building** (Fall 2015 - Fall 2017)
- S. College Avenue Parking Garage** (Fall 2015 - Summer 2016)
- Stadium** (Spring 2015 - August 2017)
- Aggie Village Redevelopment** (Winter 2015 - Summer 2016)
- UCA Fine Arts** (Spring 2015 - Winter 2015)
- CSU Health & Medical Center** (Winter 2016 - Spring 2017)
- Equine Hospital**
- Institute for Biological & Translational Therapies**
- Research Boulevard Parking Lot**
- Aggie Village Redevelopment** (Winter 2015 - Summer 2016)
- Aggie Village Redevelopment** (Winter 2015 - Summer 2016)

FACILITIES MANAGEMENT
DRAFT Oct. 21, 2015



Wifi Access

Network name (SSID): “csu-guest”

Once connected: open a web browser and you should be prompted to accept the CSU Acceptable Usage Policy to go online.



Colorado Natural Heritage Program

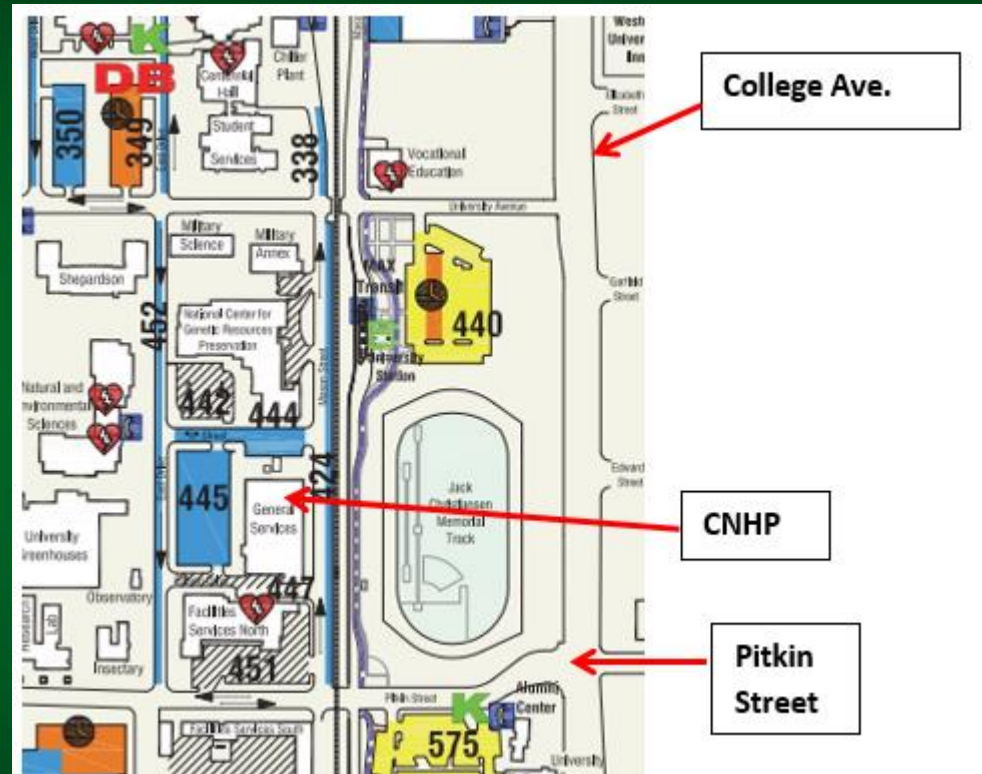


CNHP is part of CSU

Colorado
State
University



WARNER COLLEGE OF
Natural Resources



College Ave.

CNHP

Pitkin
Street



We are part of the NatureServe Network



Acknowledgments

- John Hayes, WCNR Dean
- Ken Wilson and the FWCB Department
- Allan Cox, Montana NHP
- Lee Grunau, CNHP
- CSU Students
- All of our speakers today
- CSU Conference Services
- And of course, you!



The Partners Meeting

- First Partners Meeting: January 14, 2014
- 75 in attendance, 32 organizations
- The whole meeting is on our website- this one will be too
- Invited conservation leaders, practitioners, and innovators
- This year:
 - 141 RSVPed
 - 63 Organizations



The screenshot shows the Colorado Natural Heritage Program website. The header features the program's logo and name, "Colorado Natural Heritage Program Connecting Conservation and Science". A search bar is located in the top right corner. Below the header is a navigation menu with links for "Donate Now", "Documents/Reports & Web Projects", "Map Products", "Request Data", and "Submit Data". The main content area is titled "CNHP Partners Meeting January 14, 2014" and includes a video player showing a group of people in a meeting room. To the right of the video is a "Related Topics" section with links to various documents and reports. Below the video is a paragraph describing the meeting's focus and a list of presentations, including "CNHP PowerPoint", "Partner Presentations" (with sub-links for CPW, EPA, SR LCC, State Land Board, and US Air Force Academy), "Recorded Presentations", and "Partner Presentation Notes".

Colorado Natural Heritage Program
Connecting Conservation and Science

Search CNHP 

Search

[Donate Now](#) | [Documents/Reports & Web Projects](#) » | [Map Products](#) » | [Request Data](#) » | [Submit Data](#) »

Home
[Conserving Biodiversity](#)
[About CNHP](#) »
[Our Teams](#) »
[Biodiversity Scorecard](#)
[Get Involved](#) »
[Contact Us/Directory](#)
[Field Guides](#) »
[2015 Annual Report](#)

Colorado State University
[Disclaimer](#)
[Equal Opportunity](#)
[Privacy Statement](#)

CNHP Partners Meeting

January 14, 2014



Related Topics
[CNHP Documents and Reports](#)
[CNHP Free Maps and Map Layers](#)
[Requesting Data from CNHP](#)
[Submitting Data to CNHP](#)
[CNHP Biodiversity Scorecard](#)

The main focus of this meeting was to connect the key members of Colorado's conservation community, discuss what we are doing now, and think about the future of conservation and how CNHP can support that vision. Thank you to our presenters and attendees for all you do, and all that you brought to the meeting.

CNHP Presentation
[CNHP PowerPoint](#)

Partner Presentations
[CPW PowerPoint](#)
[EPA PowerPoint](#)
[SR LCC PowerPoint](#)
[State Land Board PowerPoint](#)
[US Air Force Academy PowerPoint](#)

Recorded Presentations (all presentations, including above)
[CNHP Presentations](#)
[CNHP Partner Presentations](#)

Partner Presentation Notes
[CNHP 2014 Partner's Meeting Notes](#)



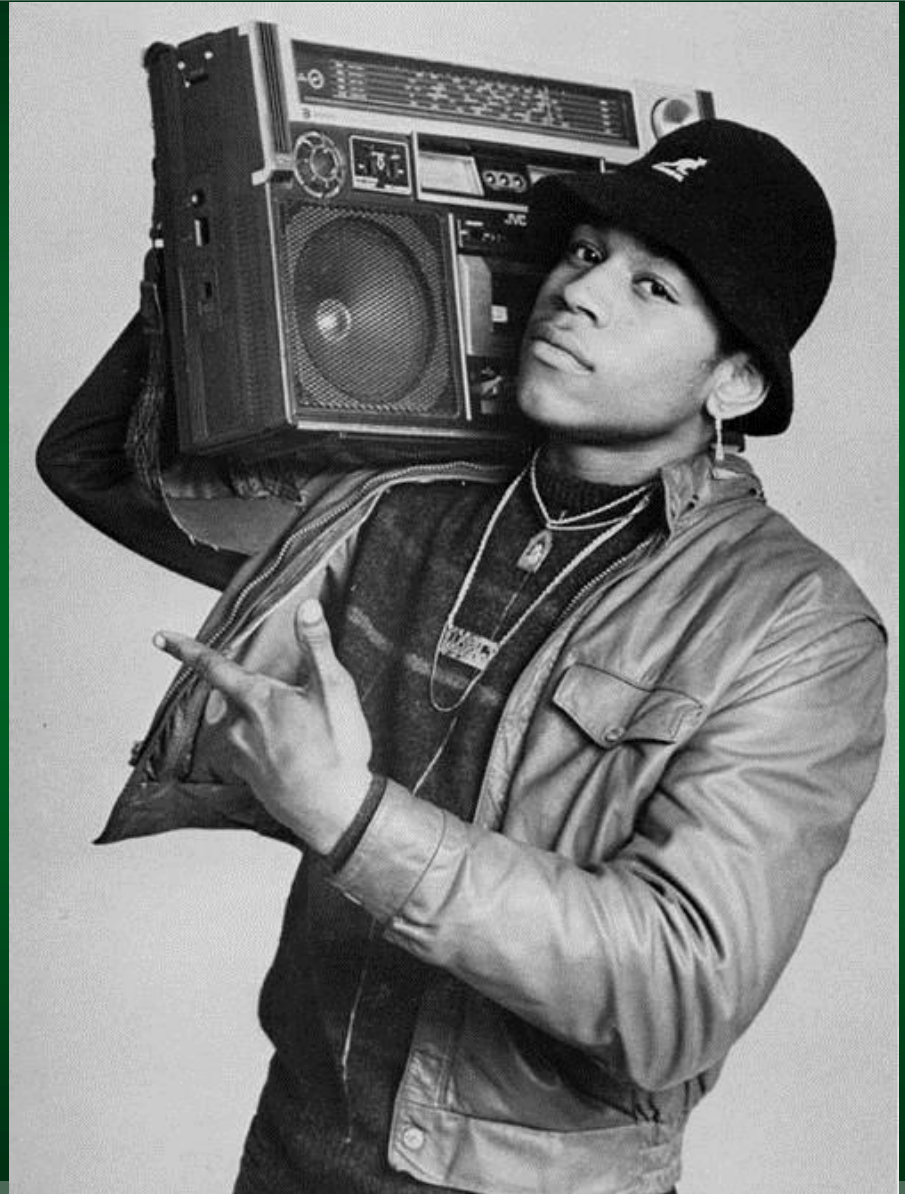
Purpose of Today's Meeting

- Connect the key members of Colorado's Conservation Community
- Provide a forum for communication across conservation efforts
- Enhance our collective effectiveness (networking, de-siloing, leveraging)
- Highlight successes and important developments
- What priorities can we address together, and how can we do that?
- We will provide you with a summary of the outcomes from this meeting



Purpose of Today's Meeting

- Happy Birthday LL Cool J!



Agenda

- | | |
|--------------------|--------------------------------------------------------|
| 8:00-9:00 | Sign-in, coffee, snacks, networking |
| 9:00 – 9:30 | Welcome and Introductions |
| 9:30-10:05 | Achievements for Conservation in 2015 |
| 10:05-10:45 | CNHP and Partner updates by theme |
| 10:45-11:10 | Break |
| 11:10-12:00 | Continued updates by theme |
| 12:00-12:55 | Catered Lunch (Taco Bar) |
| 12:55-1:00 | Proceed to break-out group rooms |
| 1:00 - 2:00 | Break-out group discussion |
| 2:00-2:15 | Break |
| 2:15-3:45 | Each break-out group report back and discussion |
| 3:45-4:00 | Wrap up and next steps |
| 4:00 | Adjourn |
| 4:15-6:00 | Happy Hour at The Mayor of Old Town |



Rob Schorr- Timer



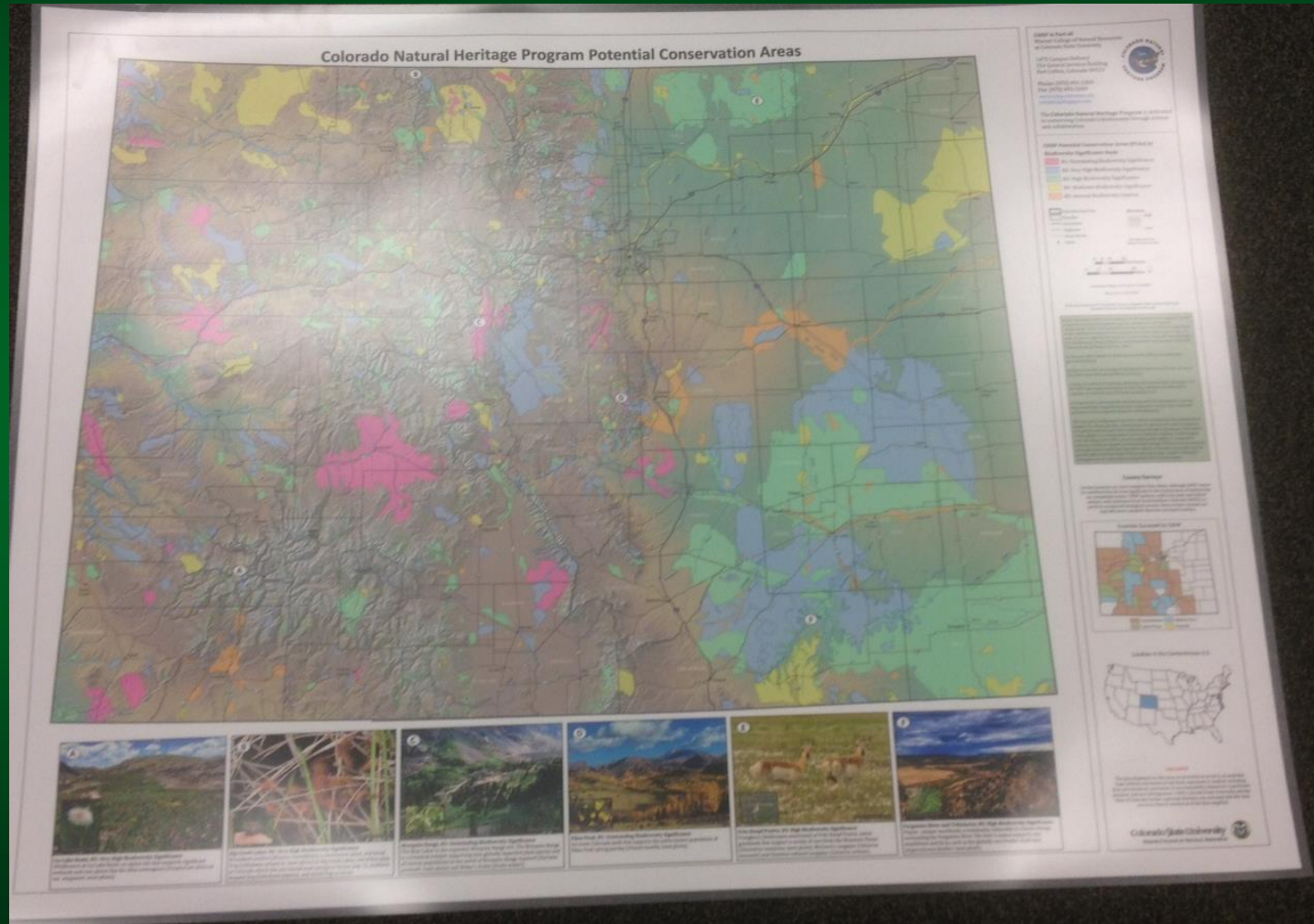
Welcome and Introductions

- Purpose, overview of the day
- Welcome from Dean Hayes
- Intro around the room
- Meet your neighbor
- Meet the students



Door Prize

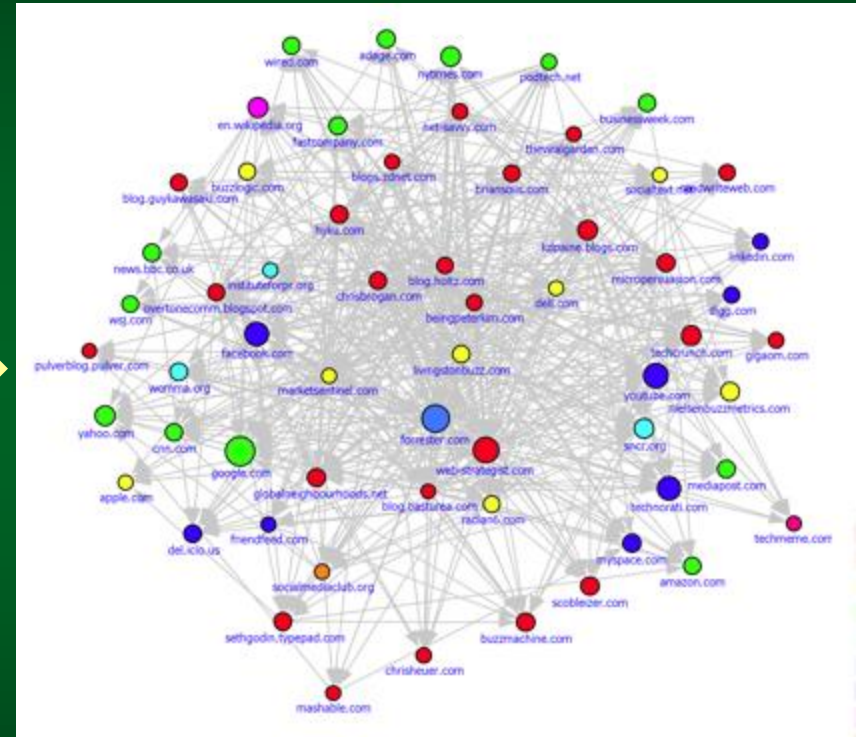
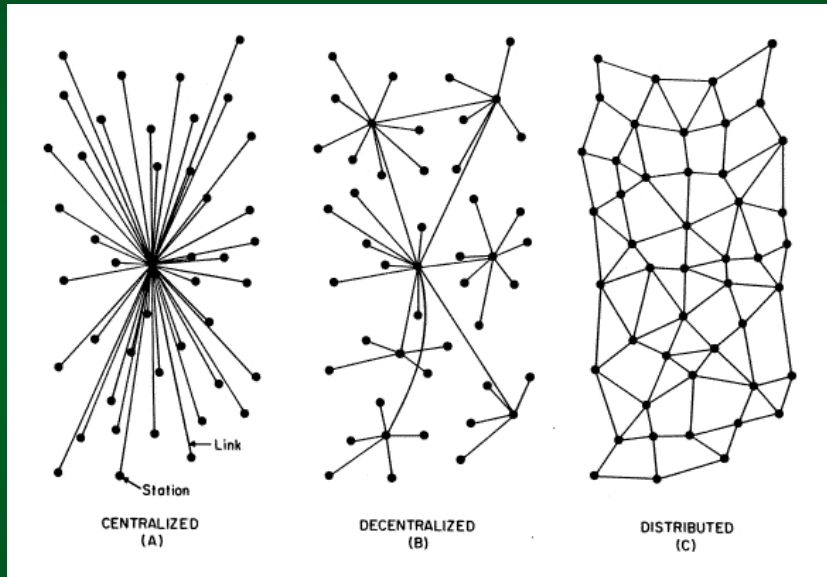
- Reach under your seat...



Welcome from WCNR Dean John Hayes



Topology of Social Networks



Introduction to our Students!

Students working at CNHP

Sierra Crumbaker

Rob Fredericks

David Hu

Rachel Maison

Cora Marrama

Alyssa Meier

Stephanie Moothart

Savanna Smith

Brandi Thomas

Joe Tort

CLTL Students

Kaylin Clements

Saleh Dadjouy

Anna Kellogg

Eric Rubenstahl

Kristen Nelson



CNHP Internship Program

Thank you Bill and Diane Siegele!

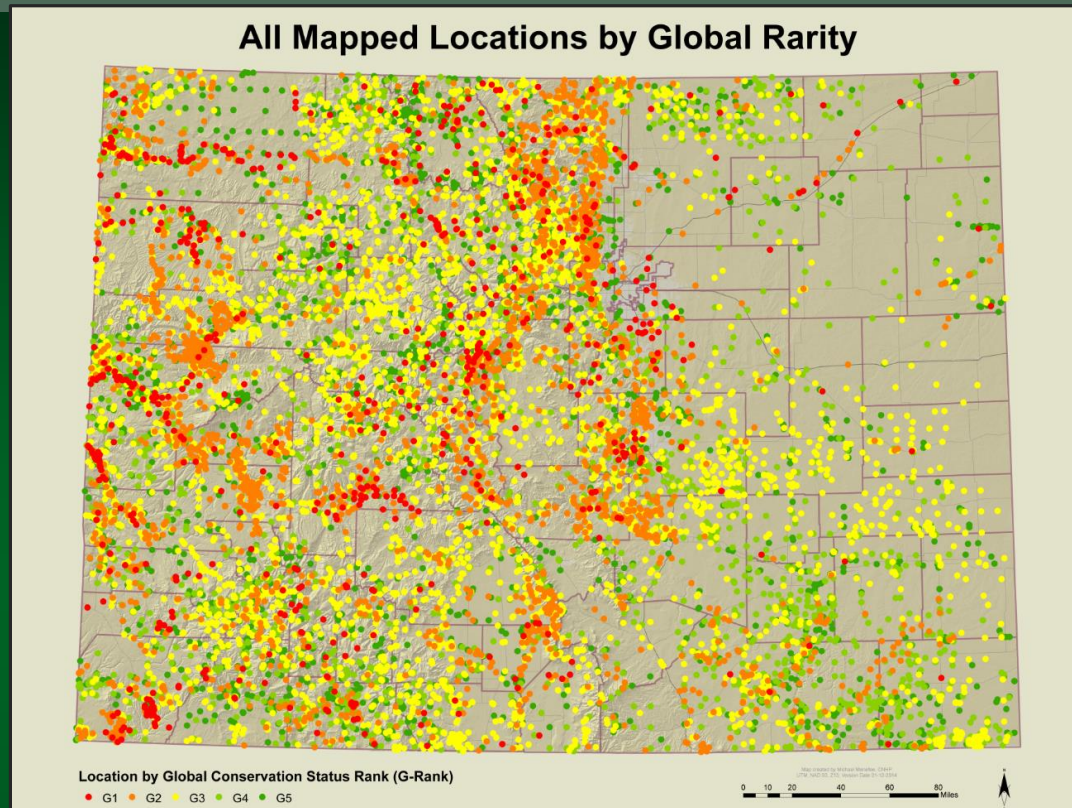


Achievements for Conservation in 2015

- JE Canyon (Erik Glenn, John Sanderson)
- CO Habitat Exchange (Terry Fankhauser)
- Browns Canyon National Monument (Bruce Rittenhouse, Steve Olson)
- SWAP (David Klute)
- GOCO (Chris Yuan-Farrell, Michele Frishman, Danielle Levine)



Achievements for Conservation in 2015



- 26,281 mapped locations of rare species and significant communities tracked by CNHP
- 5,729 observations of species on CNHP's watch list
- 1,907 Potential Conservation Areas
- 34 Networks of Conservation Areas



JE Canyon Ranch

Erik Glenn, John Sanderson





JE Canyon









Colorado Habitat Exchange

Terry Fankhauser



CNHP Partners Meeting
January 14, 2016

COLORADO HABITAT EXCHANGE

Colorado market for species habitat



COLORADO HABITAT EXCHANGE



Protect and Restore Habitat

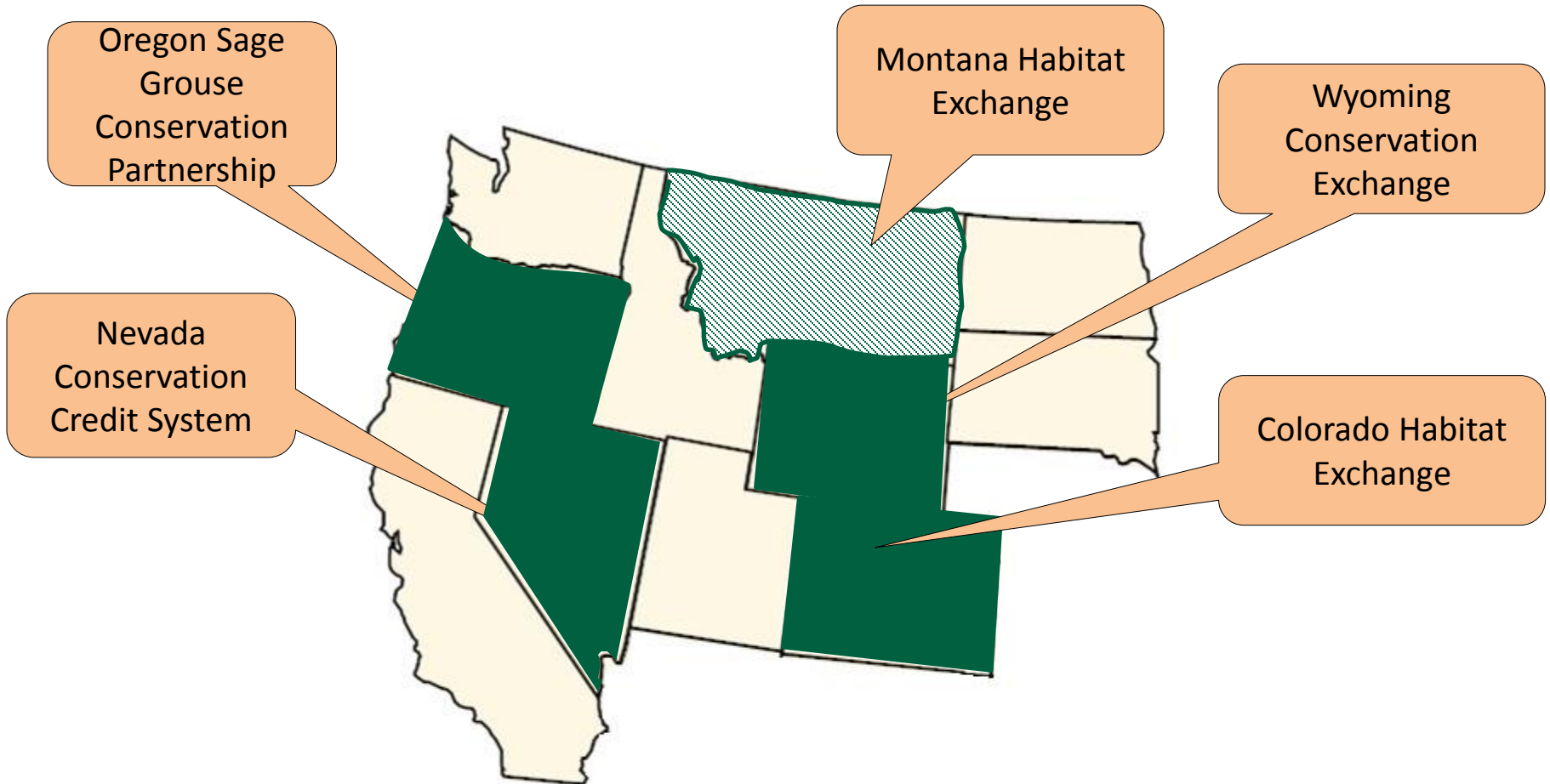


Purchase Credits for Mitigation



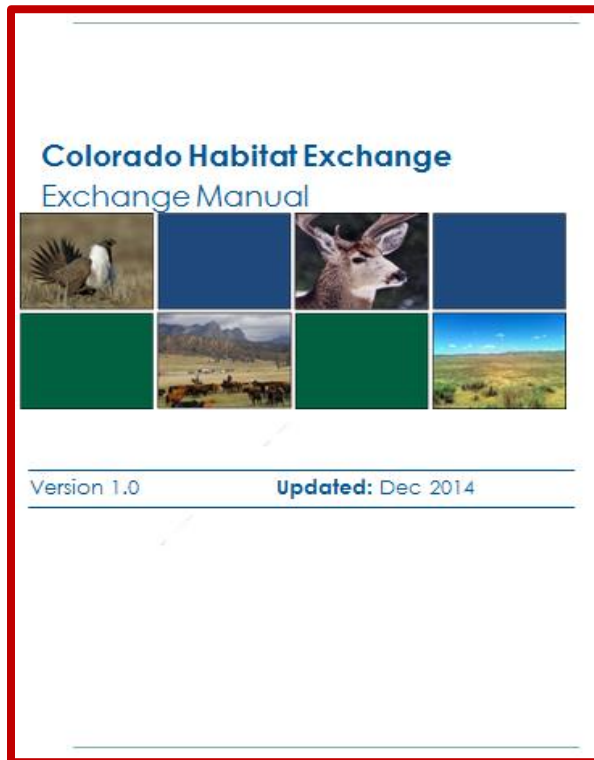
NET CONSERVATION BENEFIT

Similar GSG Efforts Range-Wide



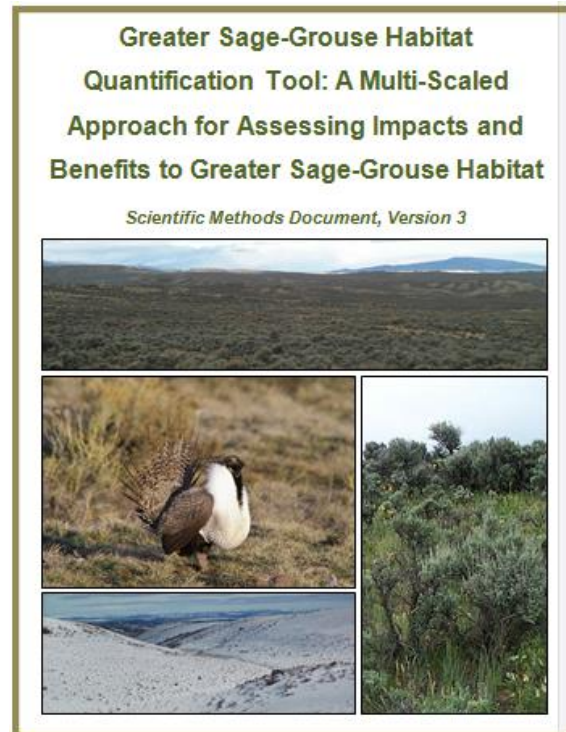
Exchange Documents

Exchange Manual



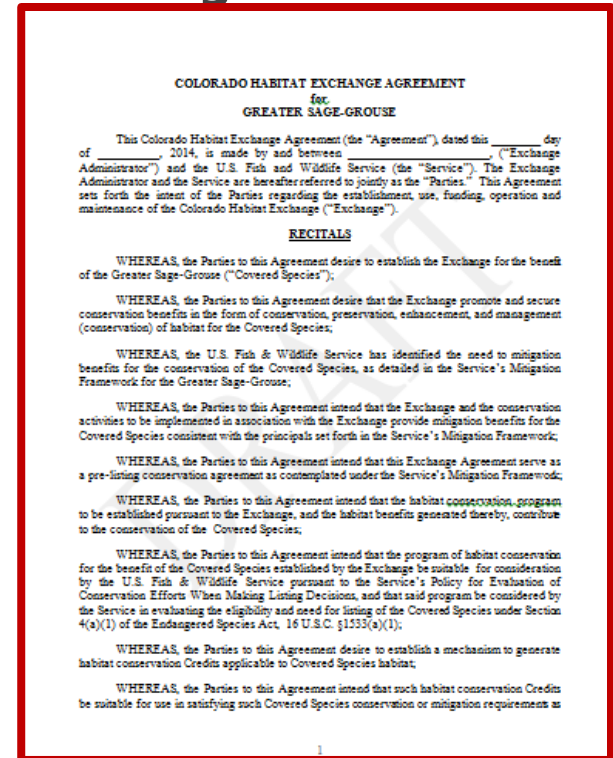
Policy Document

Habitat Quantification Tool



Science Document

Exchange Agreement



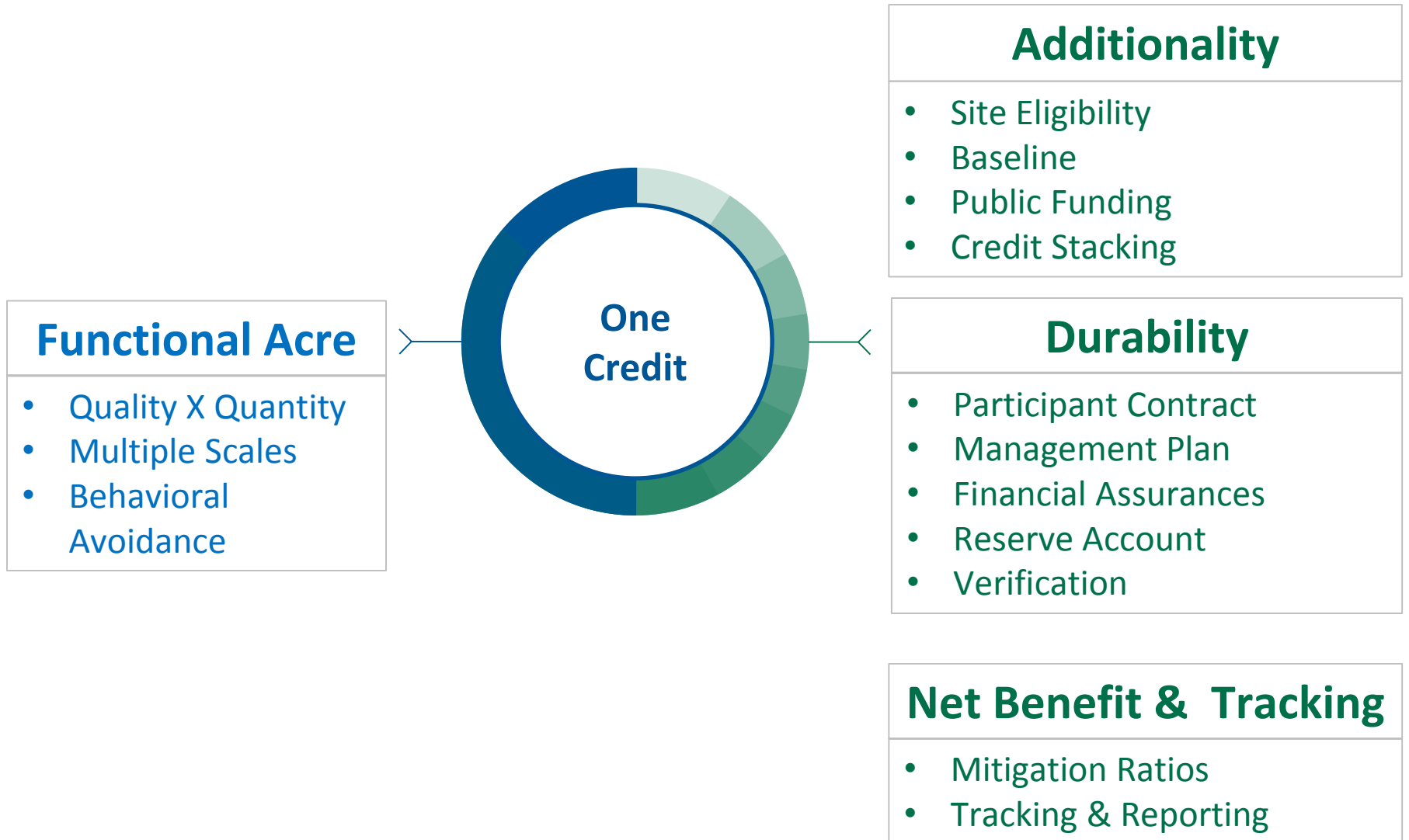
Legal Document

SCIENCE FRAMEWORK

Habitat Quantification Tool

POLICY FRAMEWORK

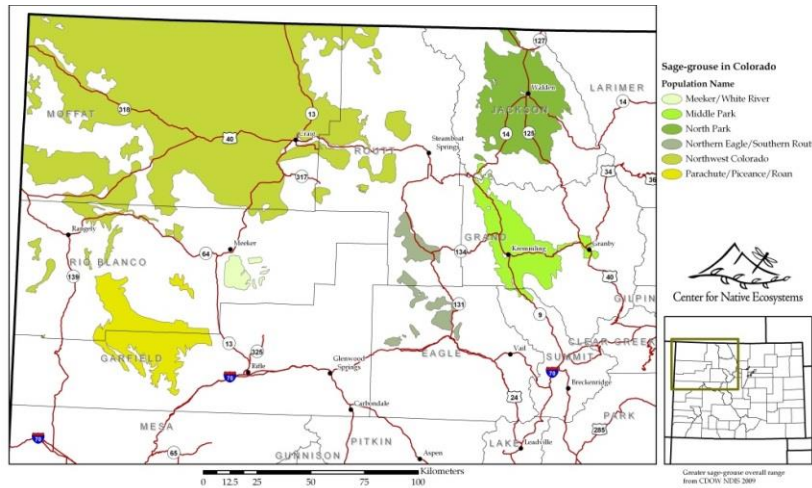
Manual & Agreement



HQT - Landscape Scale

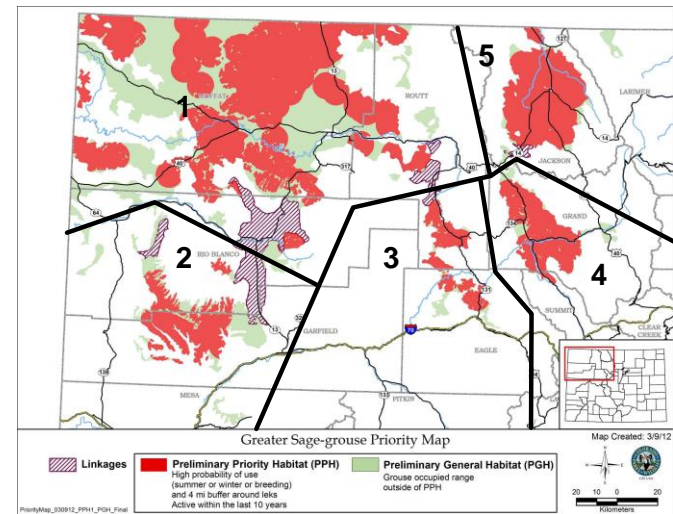
1st Order

Occupied range for the species in CO



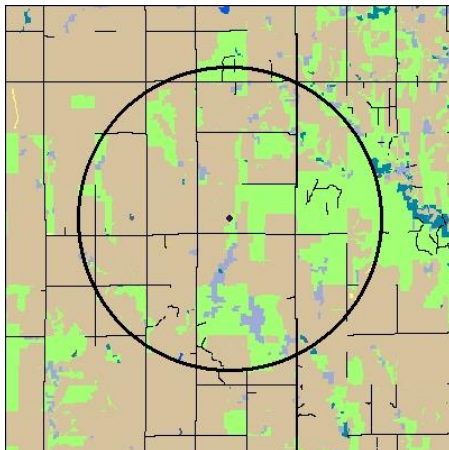
2nd Order

Habitats required by subpopulations



3rd Order

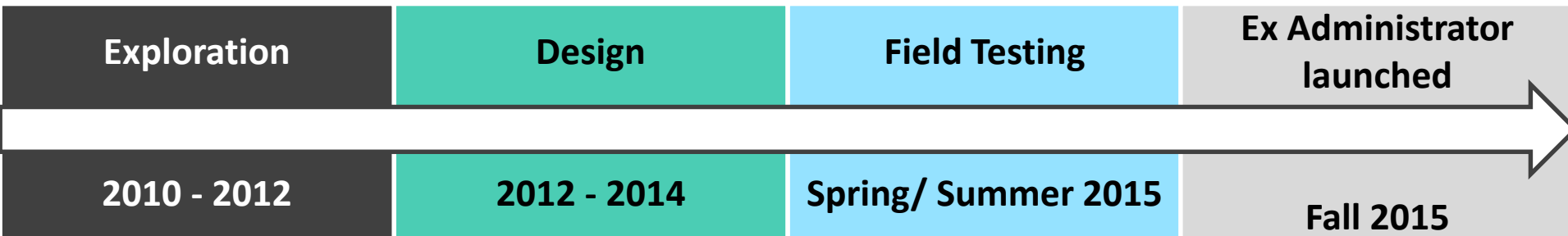
Habitats used by individuals in the subpopulation



4th Order

Habitat conditions at the site of proposed activities

Timeline



- Sent full draft documents to USFWS & BLM - December 2014
- Complete field tests of Exchange processes through early summer 2015

COLORADO HABITAT EXCHANGE

Colorado market for species habitat

QUESTIONS?



Browns Canyon National Monument

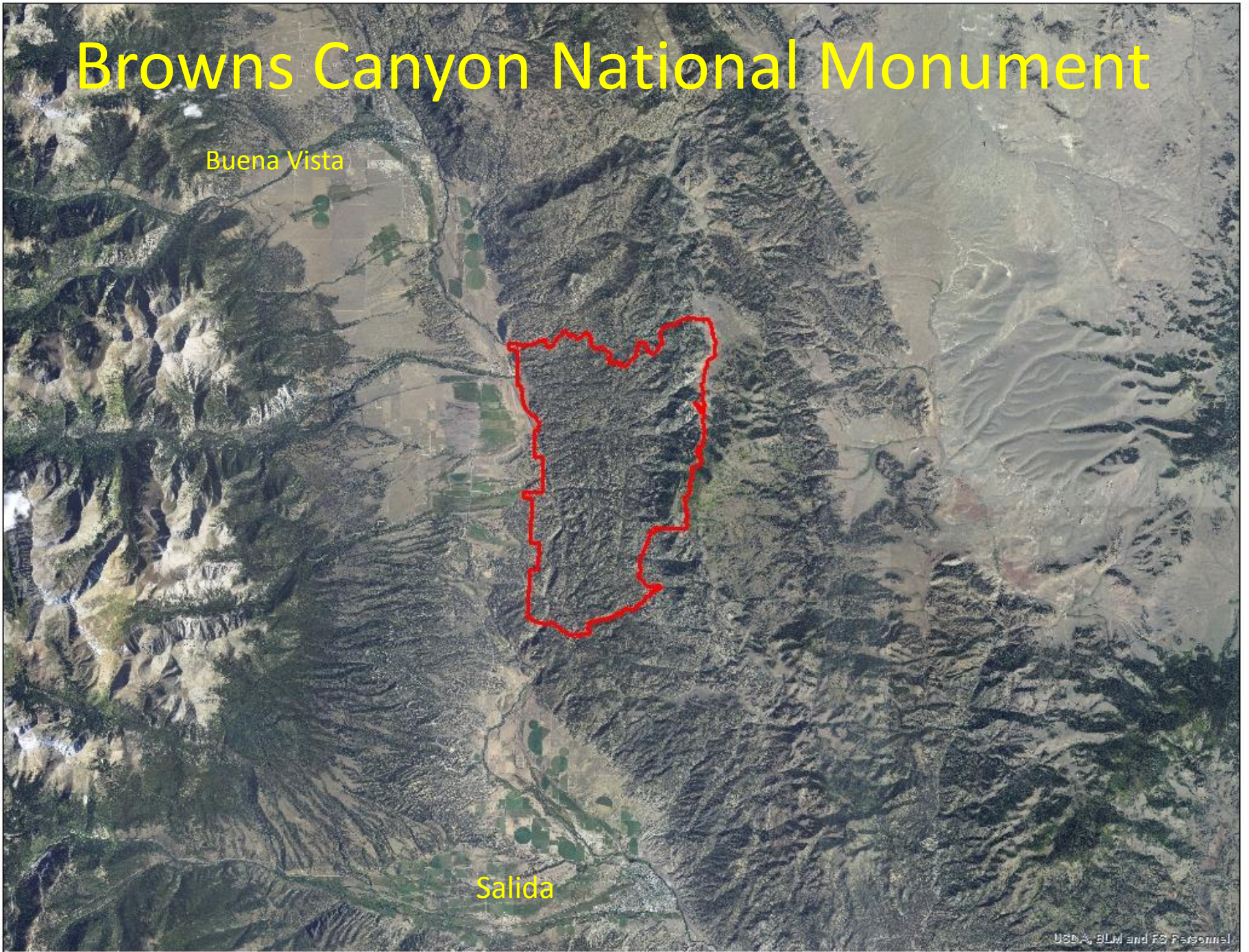
Bruce Rittenhouse, Steve Olson



Browns Canyon National Monument

Buena Vista

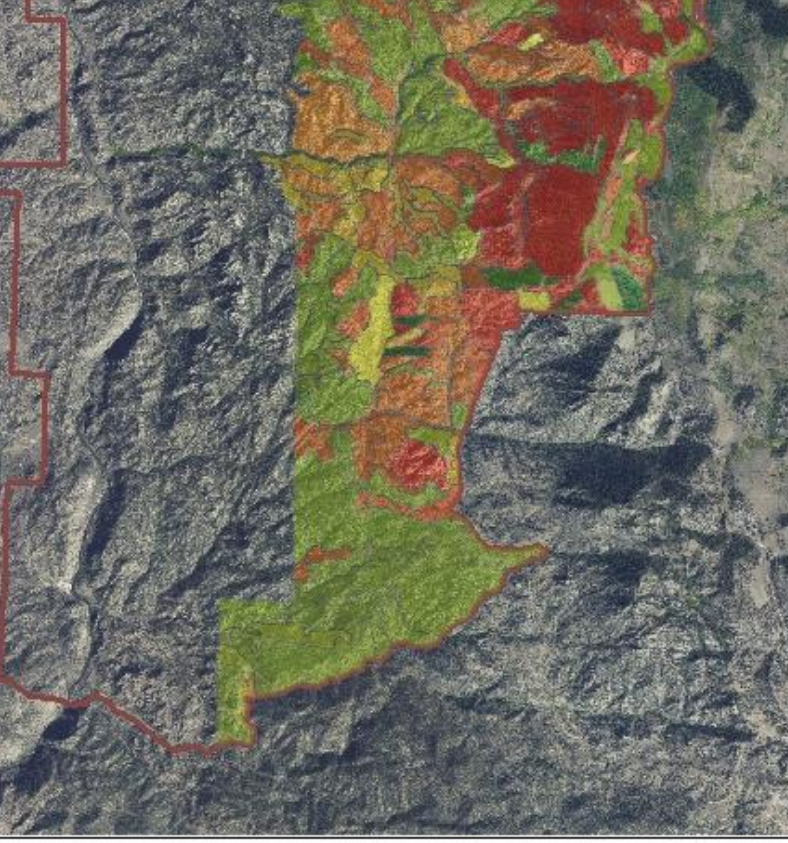
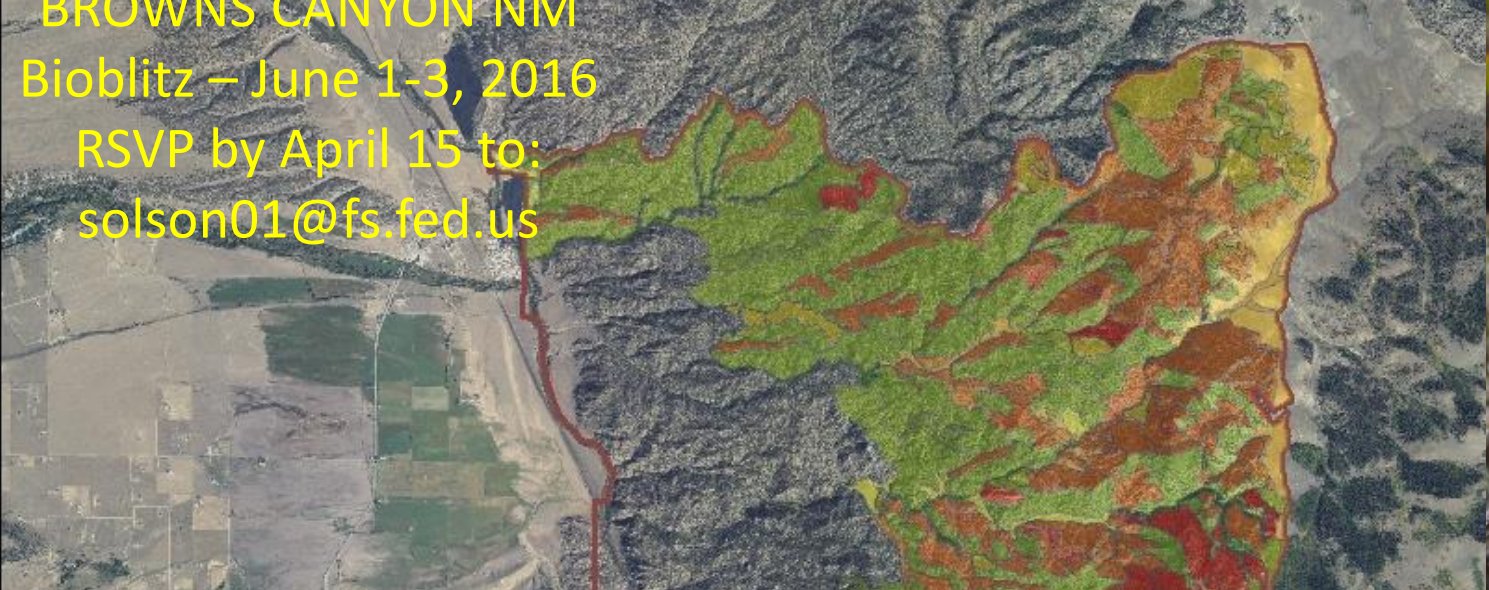
Salida



BROWNS CANYON NIM

Bioblitz – June 1-3, 2016

RSVP by April 15 to:
solson01@fs.fed.us

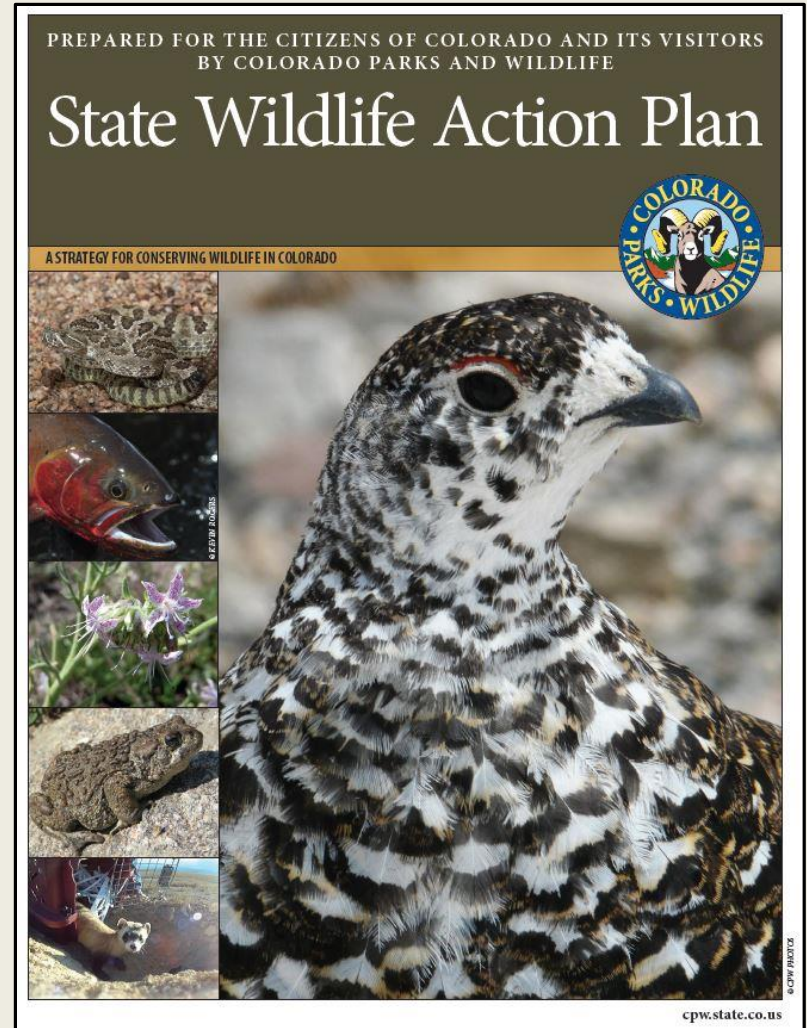


CO State Wildlife Action Plan

David Klute



Colorado's State Wildlife Action Plan



COLORADO
Parks and Wildlife

Department of Natural Resources

CNHP Partners Meeting
14 January 2016
David Klute, CPW

Basic tenets of SWAP and State Wildlife Grants

- Develop clear and compelling conservation goals
- Establish prioritized framework for conservation of rare and imperiled species
- ID important conservation areas
- Support conservation efforts that preclude the need to list species under the ESA
- Help keep common species common
- Engage the public and partners in wildlife and habitat conservation



Highlights of changes through the revision

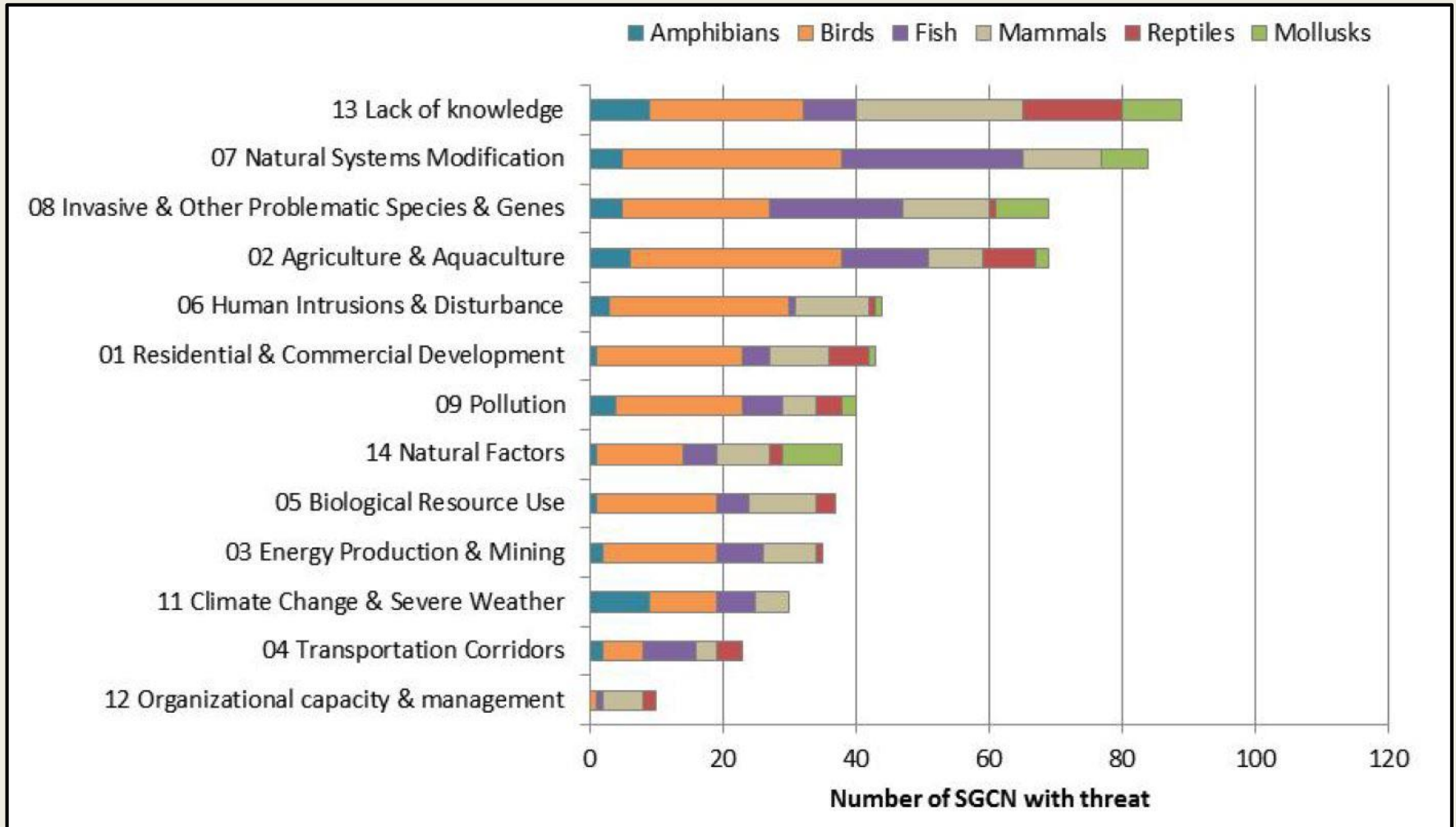
- Further prioritization to provide more direction on true conservation priorities
- More descriptive narratives for threats and conservation actions for SGCN and habitats
- Utilized standardized taxonomy for Threats and Actions
- Inclusion of analysis of plants
- Climate Change Vulnerability analysis
- Conservation Opportunity Areas

Tier 1 Species of Greatest Conservation Need

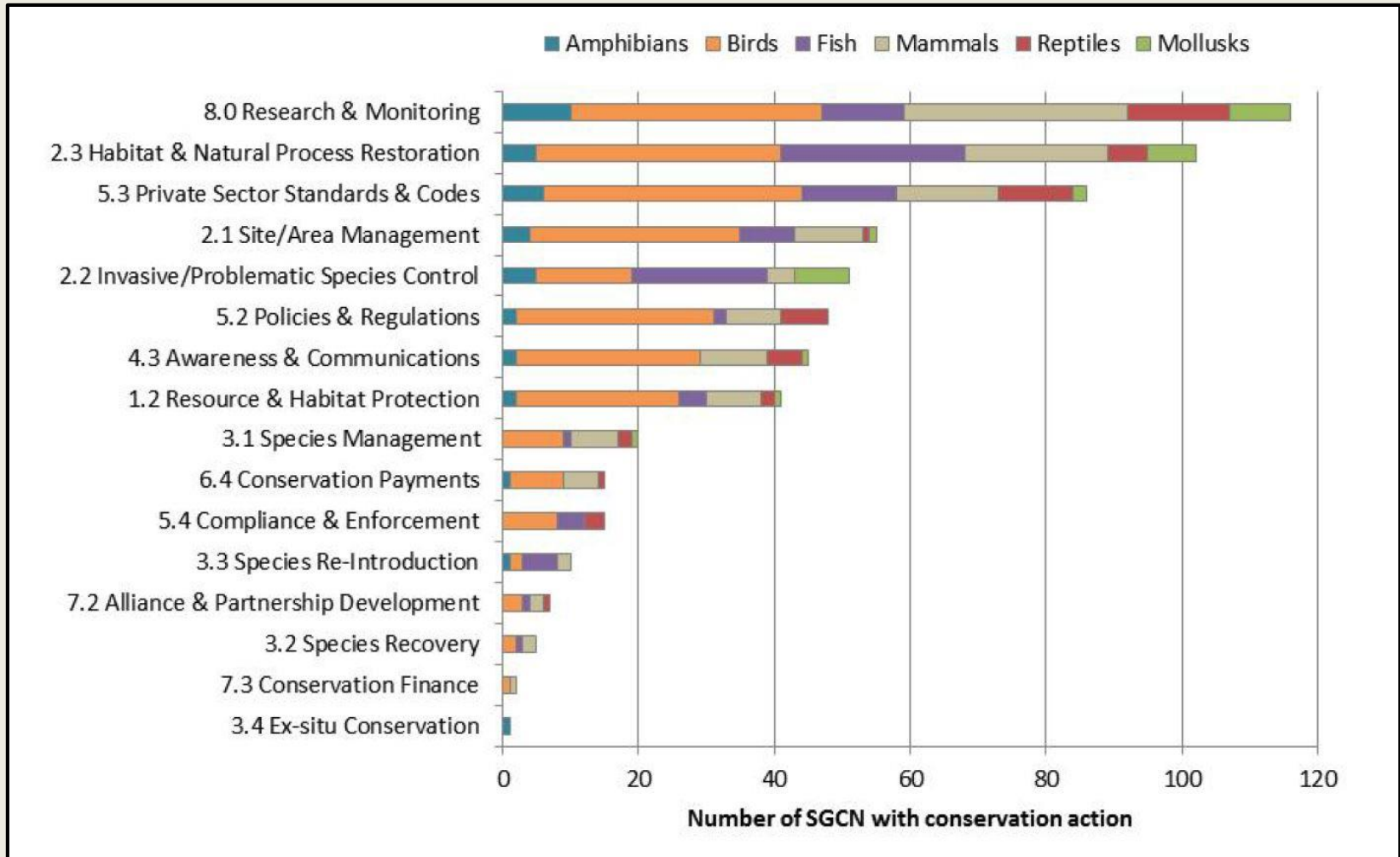
BIRDS	AMPHIBIANS
Brown-capped rosy-finch	Boreal toad (Southern Rocky Mountain Population)
Burrowing owl	Northern leopard Frog
Columbian sharp-tailed grouse	FISH
Golden eagle	Arkansas darter
Greater sage-grouse	Bluehead sucker
Greater sandhill crane	Bonytail chub
Gunnison sage-grouse	Brassy minnow
Lesser prairie-chicken	Colorado pikeminnow
Mountain plover	Colorado River cutthroat trout
Plains sharp-tailed grouse	Common shiner
Southwestern willow flycatcher	Flannelmouth sucker
Western yellow-billed cuckoo	Flathead chub
White-tailed ptarmigan	Greenback cutthroat trout
MAMMALS	Humpback chub
American pika	Mountain sucker
Black-footed ferret	Northern redbelly dace
Fringed myotis	Orangespotted sunfish
Gunnison's prairie dog	Orangethroat darter
Little brown myotis	Plains minnow
Lynx	Plains topminnow
New Mexico meadow jumping mouse	Razorback Sucker
Olive-backed pocket mouse	Rio Grande chub
Prebles meadow jumping mouse	Rio Grande cutthroat trout
Spotted bat	Rio Grande sucker
Townsend's big-eared bat ssp.	Roundtail chub
White-tailed prairie dog	Southern redbelly dace
Wolverine	Stonecat
REPTILES	Suckermouth minnow
Colorado checkered whiptail	
Massasauga	



Threats to SGCN



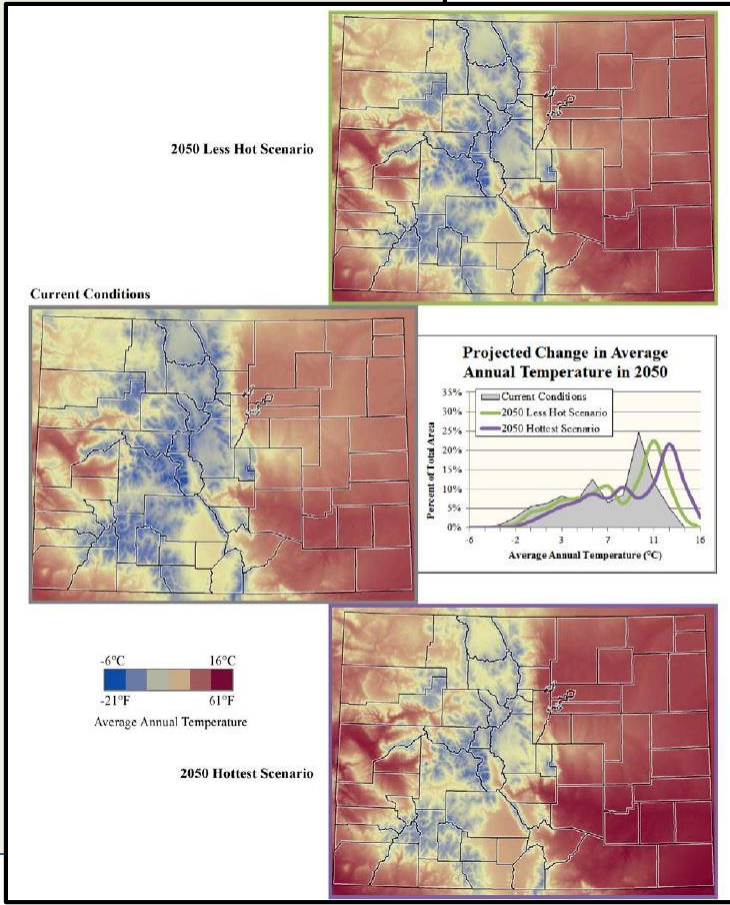
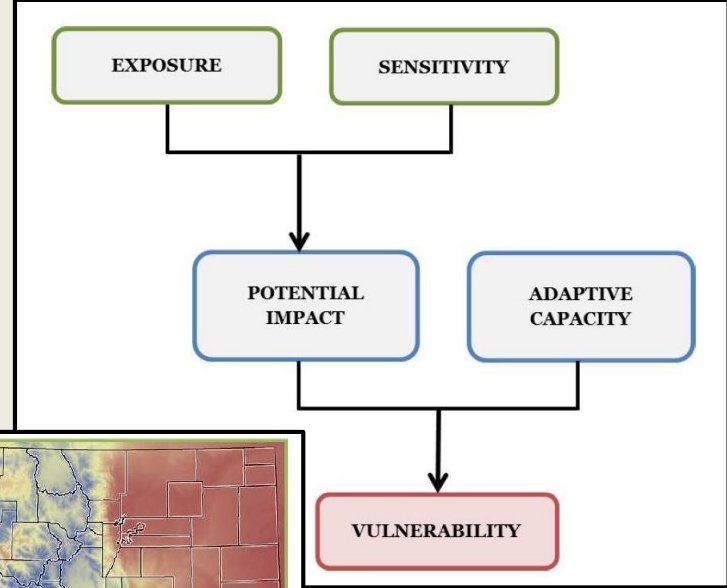
Actions to address threats



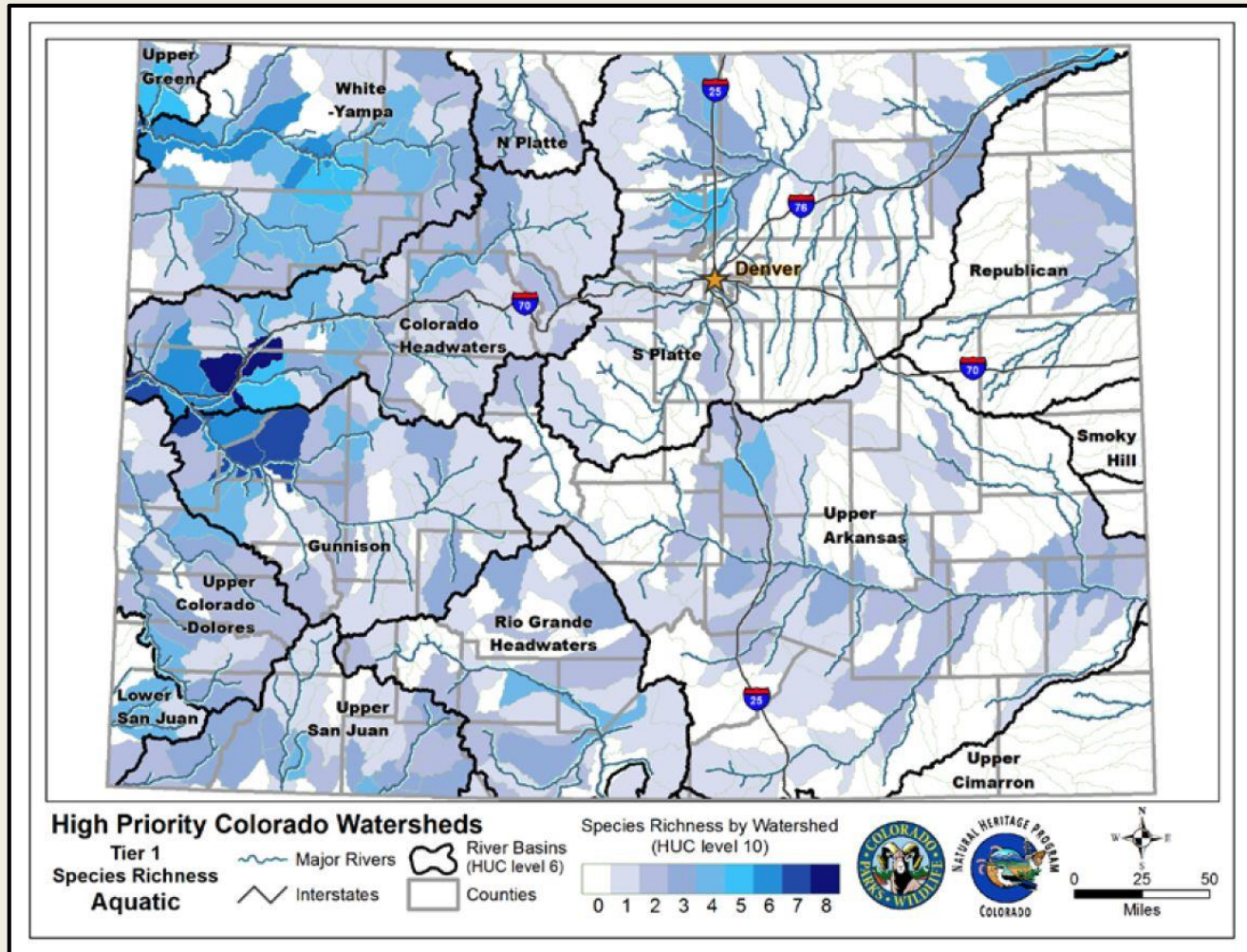
Colorado Wildlife Action Plan: Proposed Rare Plant Addendum



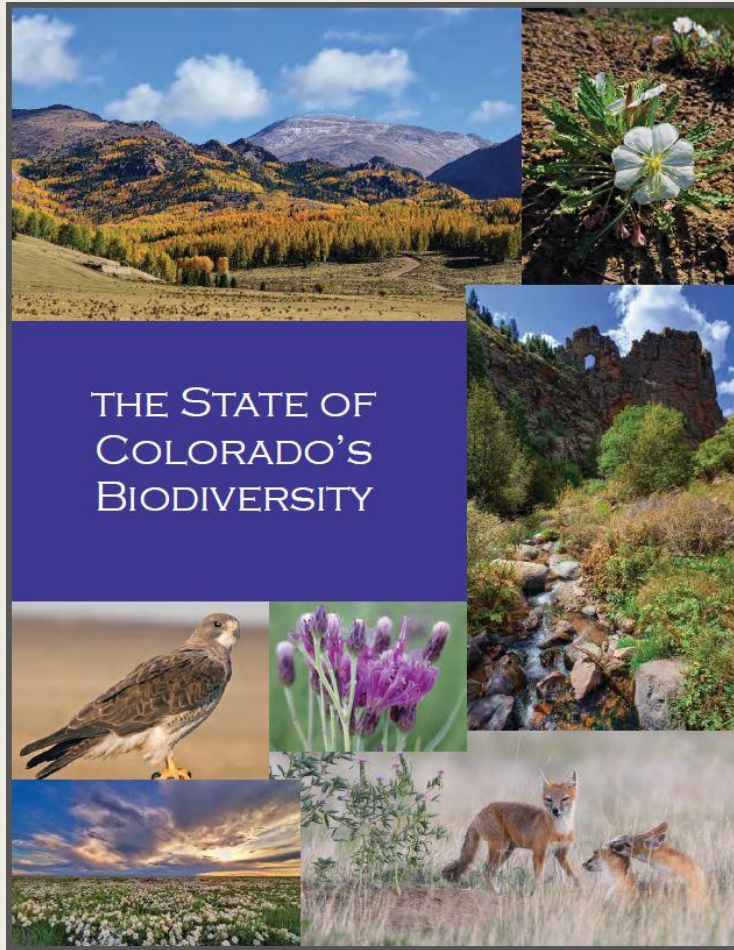
By Colorado Natural Heritage Program
For
The Colorado Rare Plant Conservation Initiative
June 2011



Aquatic Priority Watersheds



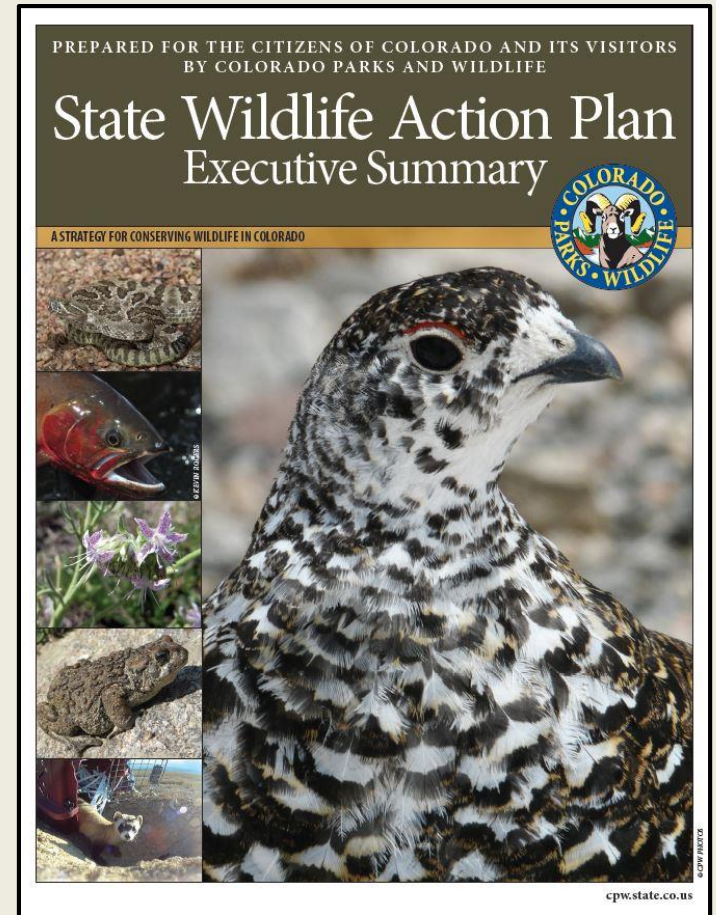
Monitoring and Evaluation



- CNHP and TNC developed Scorecard
- Used to assess if the 'conservation needle' is being moved

Process

- The document has been reviewed and recommended for approval by the FWS review committee.
- Anticipate final approval by FWS in spring 2016



Questions?

<http://cpw.state.co.us/aboutus/Pages/StateWildlifeActionPlan.aspx>



Great Outdoors Colorado

**Michele Frishman, Chris Yuan-Farrell,
Danielle Levine**





Open Space Program

Michele Frishman

Open Space Program Manager

Chris Yuan-Farrell

Open Space Program Coordinator



Conservation in 2015

South Boulder Creek Forest Legacy (Toll) | The Conservation Fund





Conservation in 2015

Sawtooth Mountain Ranch | Trust for Public Land





Conservation in 2015

Ute Valley Gateway | Colorado Springs/Trust for Public Land





Conservation in 2015

BX Ranch | Palmer Land Trust





Conservation in 2015

Ward Trust Property | City of Loveland





Conservation in 2015

Horsetooth Mountain Open Space Expansion | Larimer County



Horsetooth Mountain Open Space



Bison at Soapstone and Red Mountain



SEEING BISON

AT SOAPSTONE PRAIRIE NATURAL AREA



American bison have taken their place as part of the shortgrass prairie ecosystem!

The Laramie Foothills Bison Conservation Herd is unique because it addresses the three key challenges to bison conservation: disease, genetics, and habitat.

Support the Herd! Please consider a donation to fund fencing, supplies, veterinary staff, and bison care advancing.colostate.edu/BISON.



Bison in my Freezer



Stinky



- *Amorphophallus titanum*



Updates by Theme (10:05-10:45)

- Climate Change vulnerability and adaptation
 - Adaptation Forums (Kevin Johnson)
 - BLM Vulnerability and Adaptation (Bruce Rittenhouse)
 - Scenario Planning for Climate Change in SW CO (Betsy Neely, Nina Burkardt)
- Welcome from CSU Provost Rick Miranda

BREAK





SOUTHERN ROCKIES

Landscape Conservation Cooperative

Adaptation Forums and Landscape Conservation Design

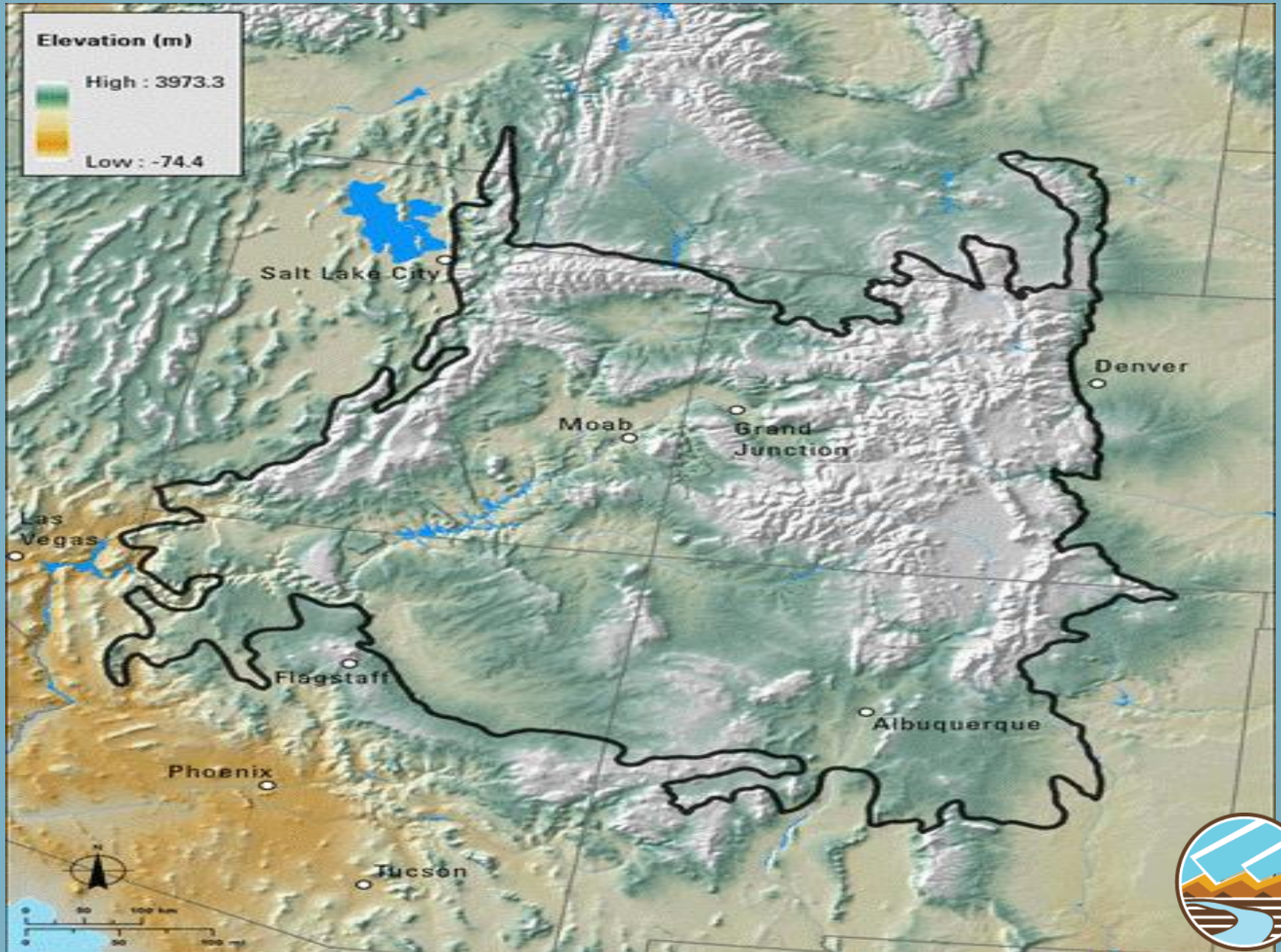
2016 CNHP Partners Meeting

January 14, 2016

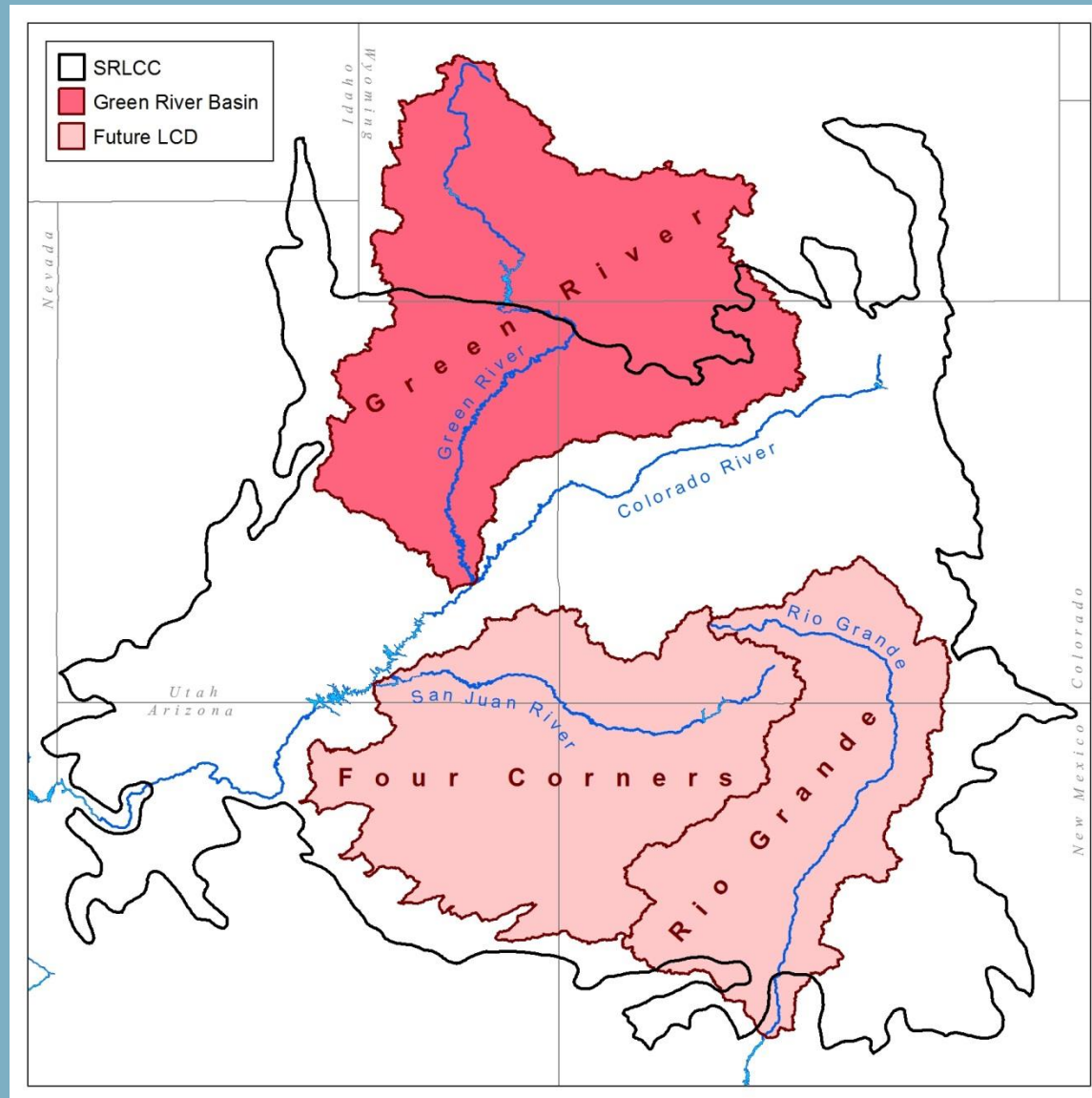
Colorado State University, Fort Collins, CO



SRLCC AREA



FOCAL AREAS



Landscape Conservation Design

- partnership-driven
- assess current and anticipated future conditions
- spatially-explicit depiction
- both a process and a product

Adaptation Forums

- Connect science and managers (cultural and natural)
- Important resources and landscape-scale stressors
- Managers' most pressing needs and questions
- Vulnerability Assessments and Adaptation Strategies

- REOCCURRING



BLM Vulnerability and Adaptation

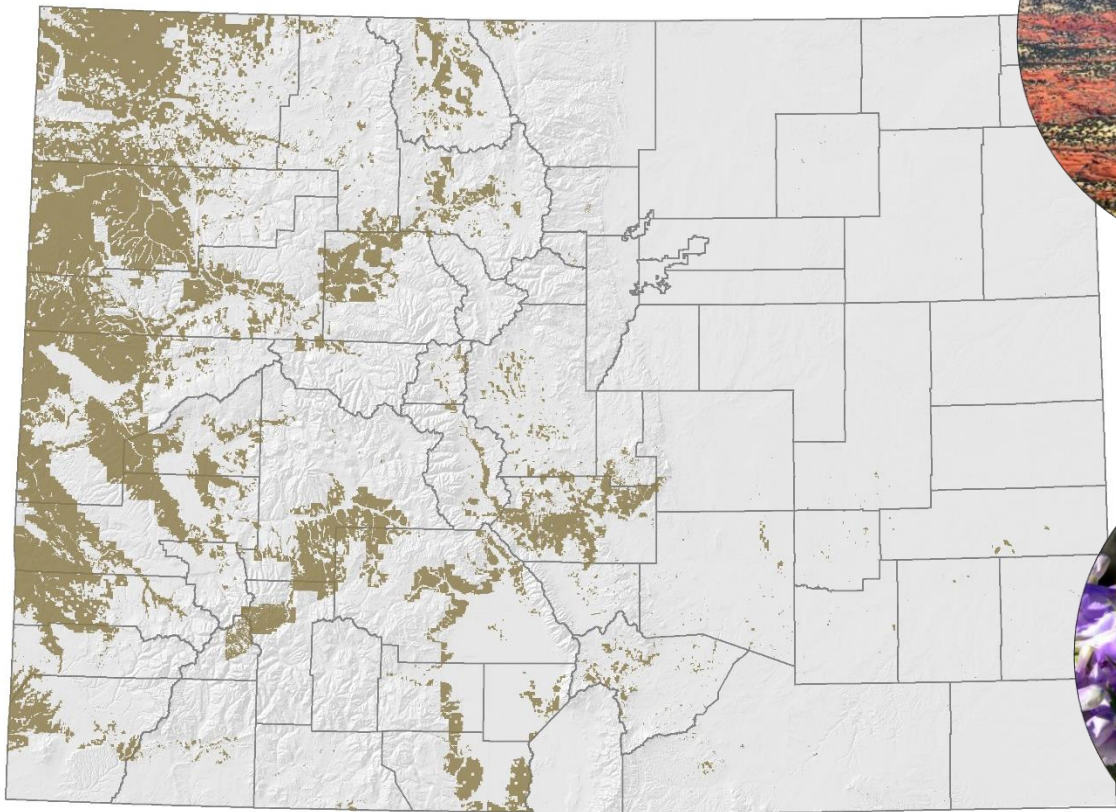
Bruce Rittenhouse





Climate Change Vulnerability Analysis Colorado Bureau of Land Management

BLM is responsible for 8.4 million surface acres in Colorado



22 ecosystem types



36 animal spp.



62 plant spp.

Vulnerability → Adaptation

Scanning the Conservation Horizon

A Guide to Climate Change Vulnerability Assessment



Environmental Management (2012) 50:341–351
DOI 10.1007/s00267-012-9893-7

PROFILE

The Adaptation for Conservation Targets (ACT) Framework: A Tool for Incorporating Climate Change into Natural Resource Management

Molly S. Cross · Erika S. Zavaleta · Dominique Bachelet · Marjorie L. Brooks · Carolyn A. F. Enquist · Erica Fleishman · Lisa J. Gramlich · Craig R. Groves · Lee Hannah · Lara Hansen · Greg Hayward · Marni Koopman · Joshua J. Lawler · Jay Malcolm · John Nordgren · Brian Petersen · Erika L. Rowland · Daniel Scott · Sarah L. Shafer · M. Rebecca Shaw · Gary M. Tabor

Received: 3 April 2010 / Accepted: 29 May 2012 / Published online: 7 July 2012
© The Author(s) 2012. This article is published with open access at Springerlink.com

Abstract As natural resource management agencies and conservation organizations seek guidance on responding to climate change, myriad potential actions and strategies have been proposed for increasing the long-term viability of some attributes of natural systems. Managers need practical tools for selecting among these actions and strategies to develop a tailored management approach for specific targets at a given location. We developed and present one such tool, the participatory Adaptation for Conservation Targets (ACT) framework, which considers

the effects of climate change in the development of management actions for particular species, ecosystems and ecological functions. Our framework is based on the premise that effective adaptation of management to climate change can rely on local knowledge of an ecosystem and does not necessarily require detailed projections of climate change or its effects. We illustrate the ACT framework by applying it to an ecological function in the Greater Yellowstone Ecosystem (Montana, Wyoming, and Idaho, USA)—water flows in the upper Yellowstone River. We

M. S. Cross (✉)
Wildlife Conservation Society, 301 N. Wilson Avenue,
Bozeman, MT 59715, USA
e-mail: mcross@wcs.org

E. S. Zavaleta
Environmental Studies Department, University of California,
Santa Cruz, CA, USA

D. Bachelet
Conservation Biology Institute, Corvallis, OR, USA

M. L. Brooks
Department of Zoology, Southern Illinois University,
Carbondale, IL, USA

C. A. F. Enquist
The Wildlife Society, Bethesda, MD, USA

C. A. F. Enquist
USA National Phenology Network, Tucson, AZ, USA

E. Fleishman
Bren School of Environmental Science & Management,
University of California, Santa Barbara, CA, USA

E. Fleishman
John Muir Institute of the Environment, University of California,
Davis, CA, USA

L. J. Gramlich
College of the Environment, University of Washington, Seattle,
WA, USA

C. R. Groves
The Nature Conservancy, Bozeman, MT, USA

L. Hannah
Center for Applied Biodiversity Science (CABS), Conservation
International, Arlington, VA, USA

L. Hansen
EcoAdapt, Bainbridge Island, WA, USA

G. Hayward
Rocky Mountain Regional Office, U.S. Forest Service, 750
Simms Street, Golden, CO, USA

M. Koopman
Gene Institute, Ashland, OR, USA

J. J. Lawler
School of Environmental and Forest Sciences, University of
Washington, Box 352100, Seattle, WA, USA

J. Malcolm
Faculty of Forestry, University of Toronto, Toronto, ON, Canada

Springer

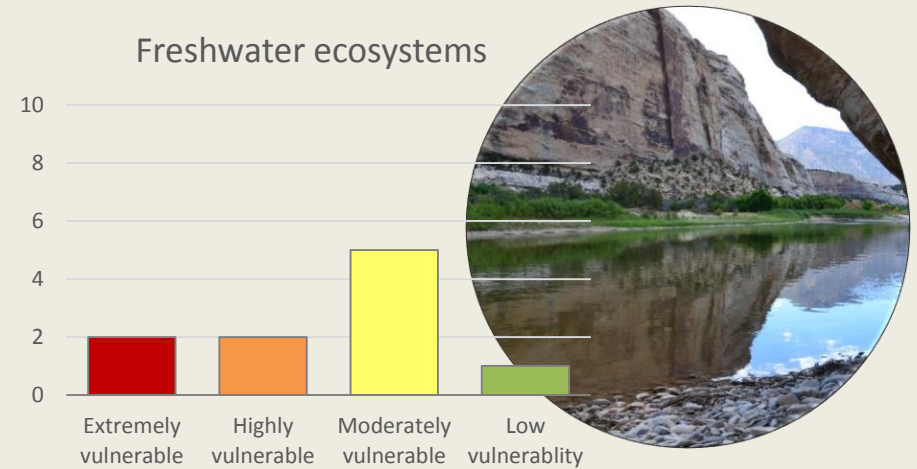
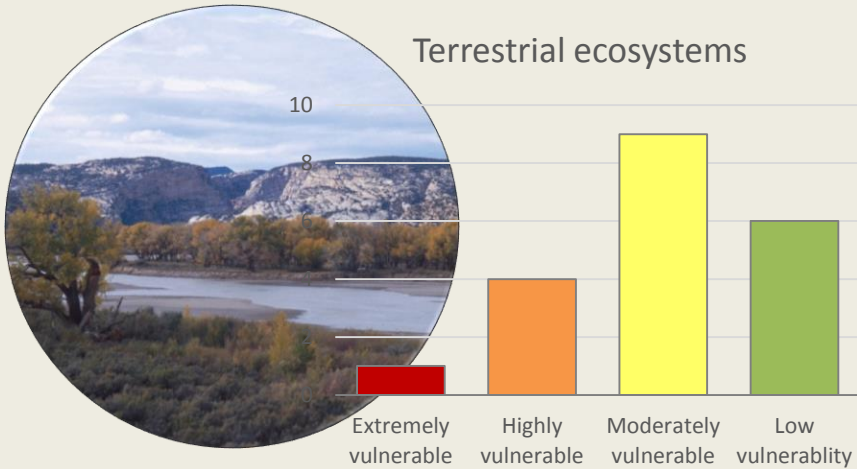
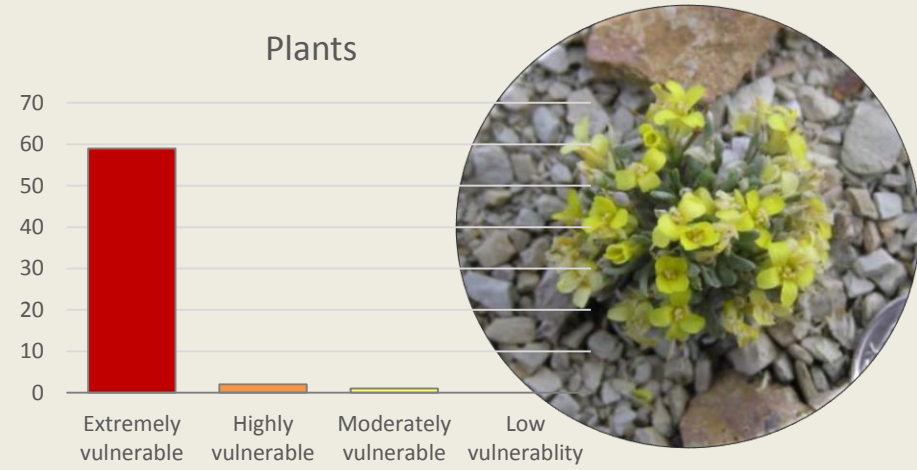
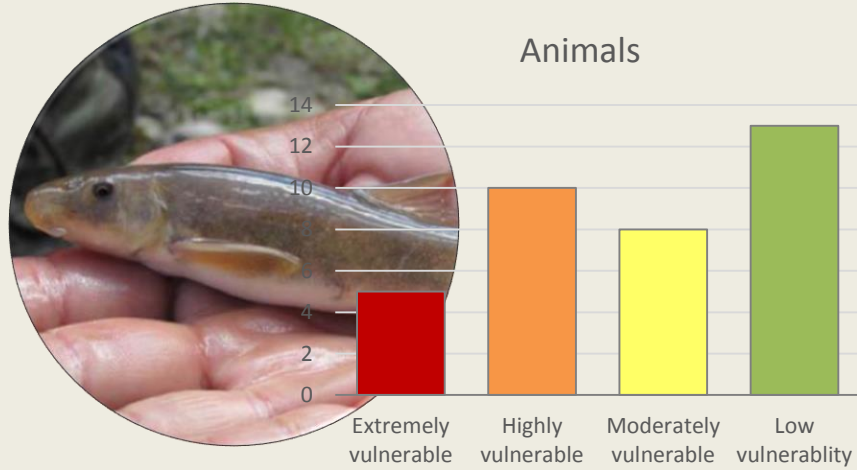
Climate-Smart Conservation

Putting Adaptation Principles into Practice






Climate Change Vulnerability Analysis



Climate Change Vulnerability

<http://www.cnhp.colostate.edu/download/reports.aspx>



San Juan / Tres Rios Climate Change Ecosystem Vulnerability Assessment


Colorado Wildlife Action Plan Enhancement: Climate Change Vulnerability Assessment

December 2014



Climate Change Vulnerability Assessment for Colorado Bureau of Land Management

December 2015



Climate Change Vulnerability Assessment for Rare Plants of the San Juan Region of Colorado



May 2014

gram
475

PREPARED FOR THE CITIZENS OF COLORADO AND ITS VISITORS
BY COLORADO PARKS AND WILDLIFE

State Wildlife Action Plan

A STRATEGY FOR CONSERVING WILDLIFE IN COLORADO



cpw.state.co.us

Scenario Planning for Climate Change

Betsy Neely, Nina Burkardt



Welcome from CSU Provost Rick Miranda



Anthony A. Frank, President



Break



Updates by Theme (11:10-12:00)

- Climate Change monitoring and research
 - Pueblo Chemical Depot (Clark Jones)
- Avoidance and Mitigation
 - Decision Support for Integrated Regional Transportation Planning (Patrick Crist)
- Data development and sharing
 - STReaMS database (Amy Greenwell)
 - Colorado Management and Protection Map (COMaP) (Amanda Barker)
 - Colorado the Beautiful (Seth McClean)
- Wetlands
 - Colorado Wetland Information Center (Billy Bunch)

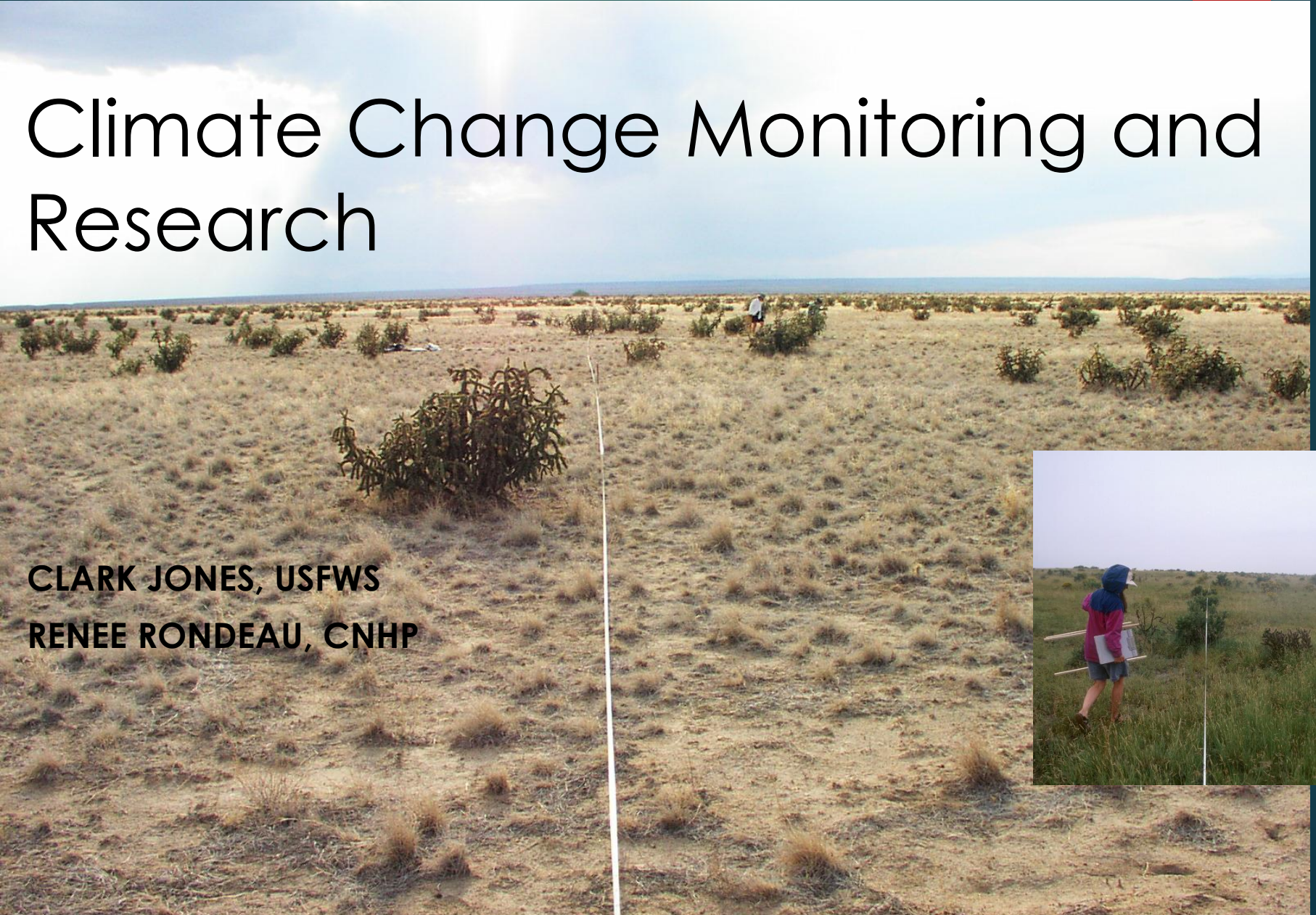
LUNCH



Climate Change Monitoring and Research

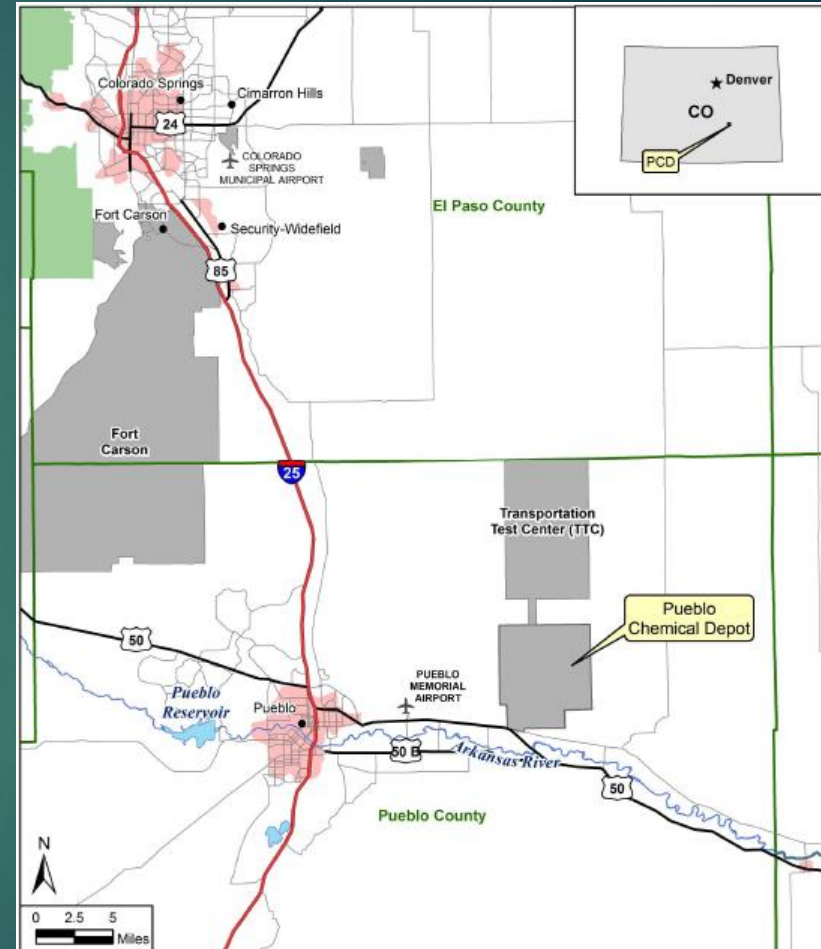
CLARK JONES, USFWS

RENEE RONDEAU, CNHP

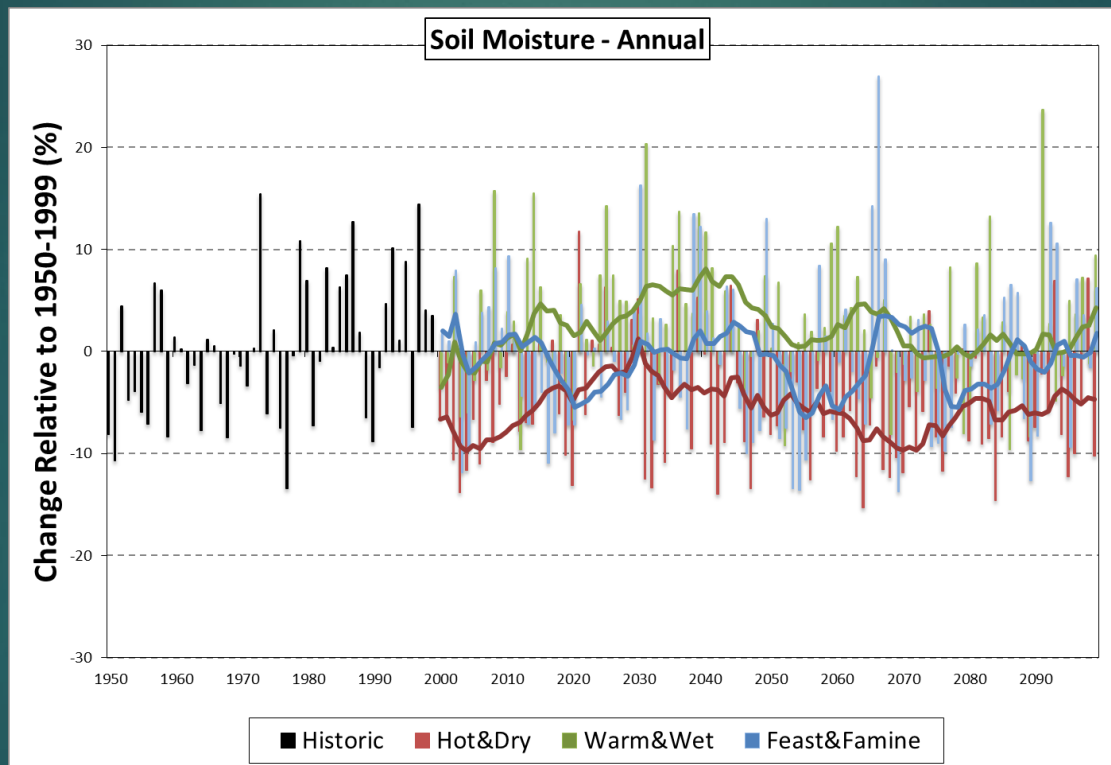


Background

- ▶ Pueblo Chemical Depot ~23,000 acres
- ▶ Shortgrass prairie habitat previously grazed 1943-1998.
- ▶ Vegetation was severely impacted by overgrazing
- ▶ PCD began working with CNHP in 1998 to monitor vegetation recovery and compare grazed and ungrazed areas.
- ▶ CNHP has sampled 9 times since 1998 through wet and drought years.



Future Climate Scenarios: Droughts could intensify and last longer



1999



2001



2002



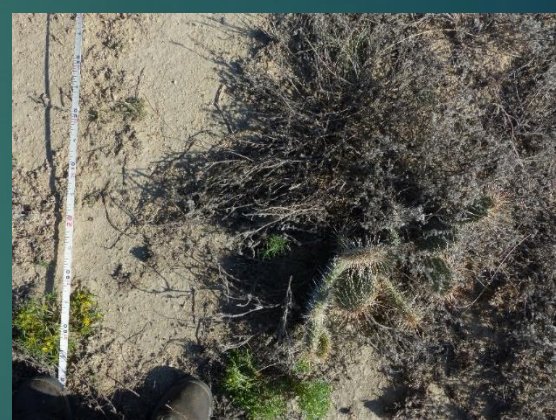
2003



2010



2015

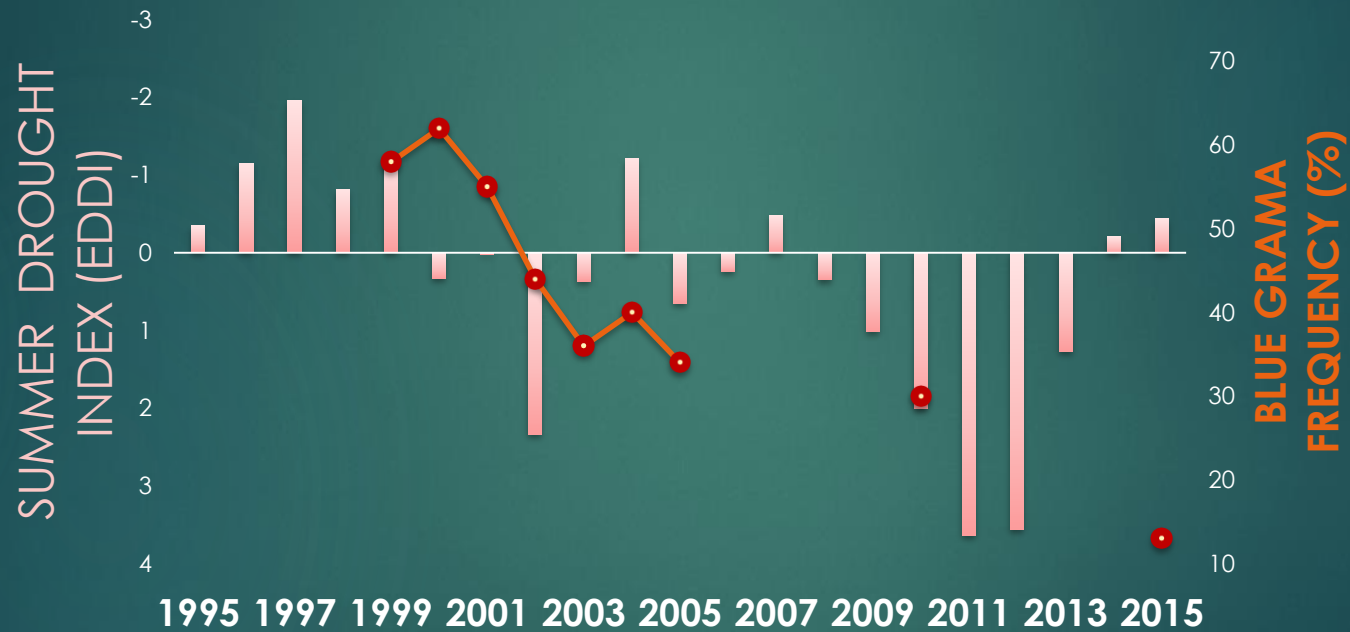


sg68n28m

In sg68, Blue grama cover went from an average of 41% in 1999 to 0.5% in 2015

In sg68, blue grama frequency (F3) went from 93% in 1999 and 2001 to 12% in 2015

Drought negatively impacts blue grama



Conclusion

- ▶ While many monitoring projects are not set up with climate change in mind, we find that a long-term data set can be extremely valuable in understanding the impacts from a future climate.
- ▶ Pueblo Chemical Depot will use this data to help inform management decisions, e.g., whether or not to support grazing reintroduction and at what intensity to recommend.



Decision Support for Integrated Regional Transportation Planning

Patrick Crist



Decision support for Integrated Regional Mitigation Planning

CNHP Partners Meeting

January 14, 2016

Patrick Crist, NatureServe

Michelle Fink, CNHP

Lee Grunau, CNHP

Karin Decker, CNHP

Richard Muzzy, PPACG

Craig Casper, PPACG



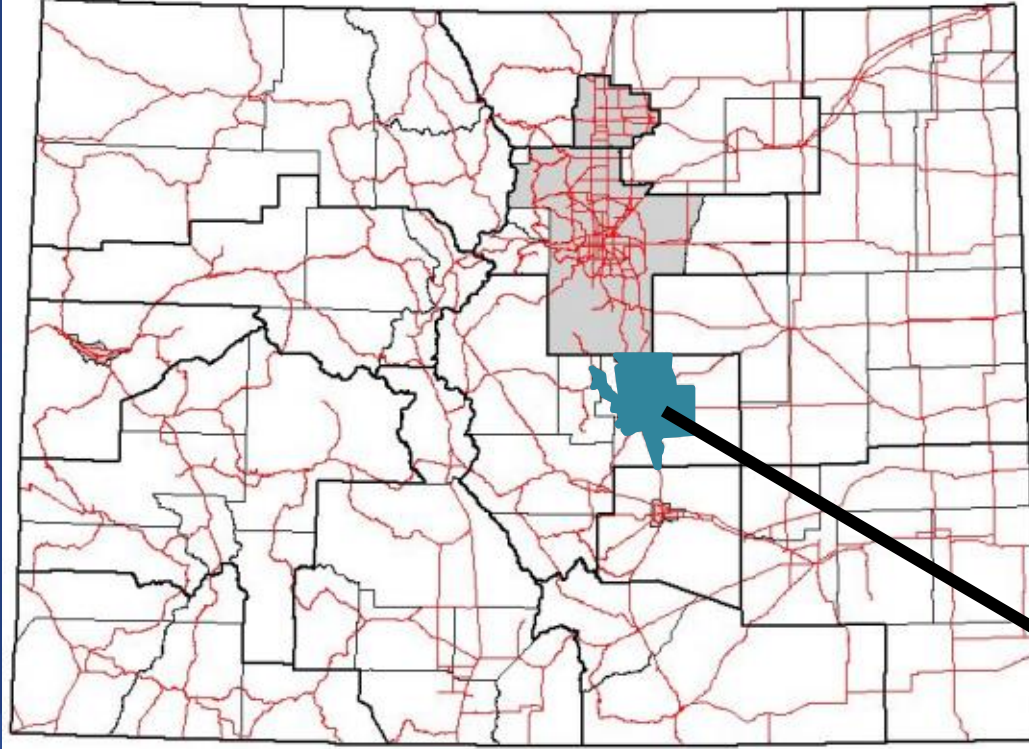
Objectives

- Identify potential conservation impacts and opportunities for highest conservation contribution of mitigation
- Provide a framework to collaborate on mitigation needs
- Streamline permitting processes
- Integrate planning and decision making between agencies

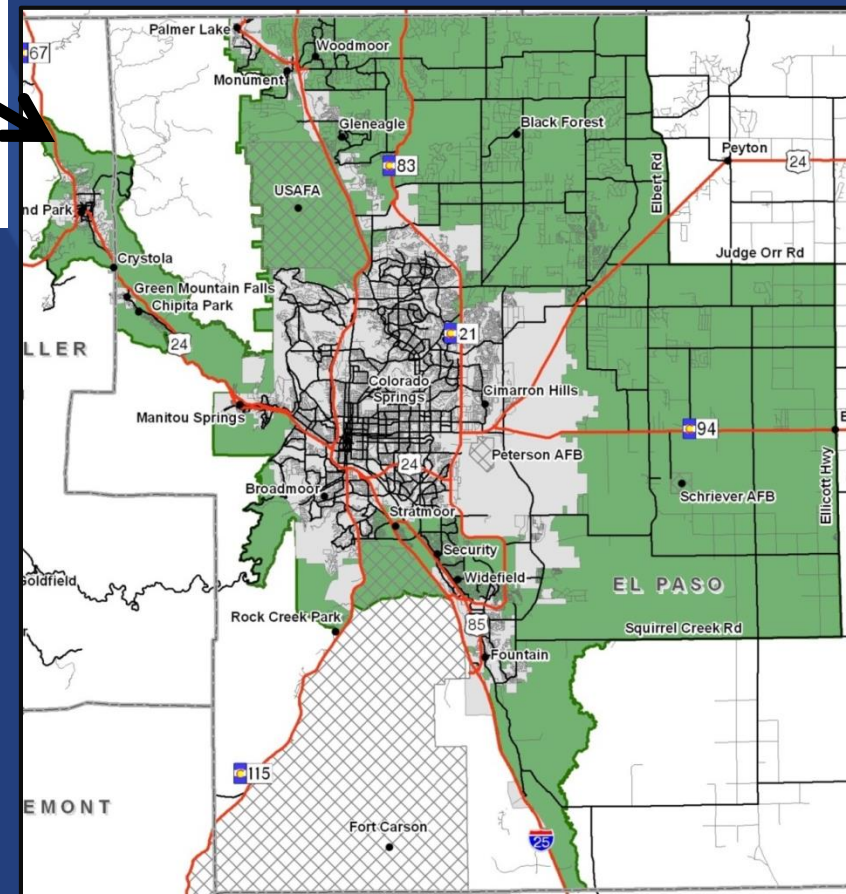
What is an Integrated Regional Mitigation Plan?

- Addresses all impacts in an LRTP, not single project
- A database for dynamic queries, not a static map
- Links specific projects and their expected impacts to a set of places that can provide the needed mitigation (plus potentially added values)
- These places can include
 - existing conservation areas (needing restoration)
 - planned conservation/mitigation projects (needing funding)
 - partner priority conservation areas (needing acquisition and or restoration)

Project Area



Colorado



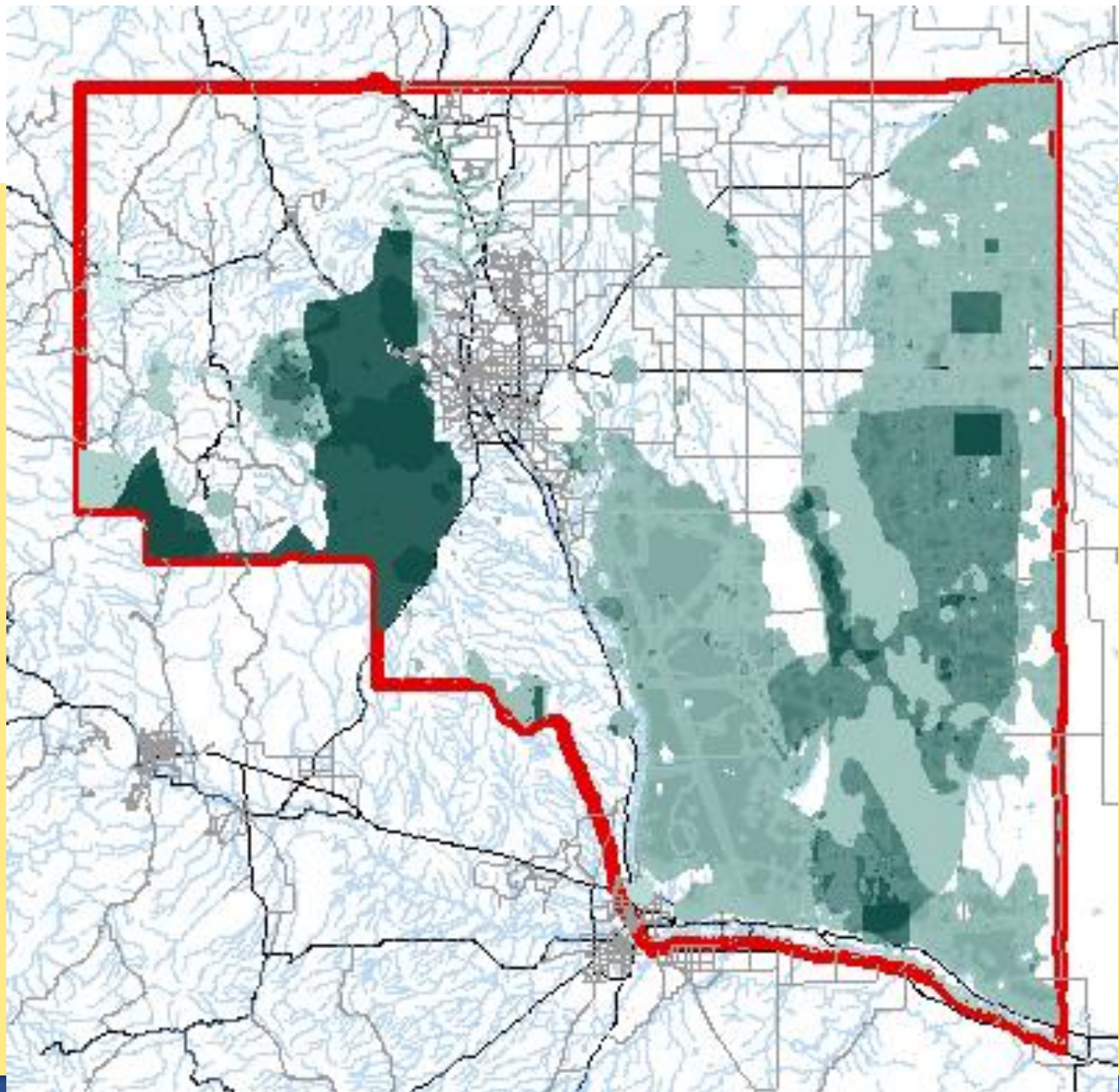
Colorado Springs MPO
Planning Boundary

Methods

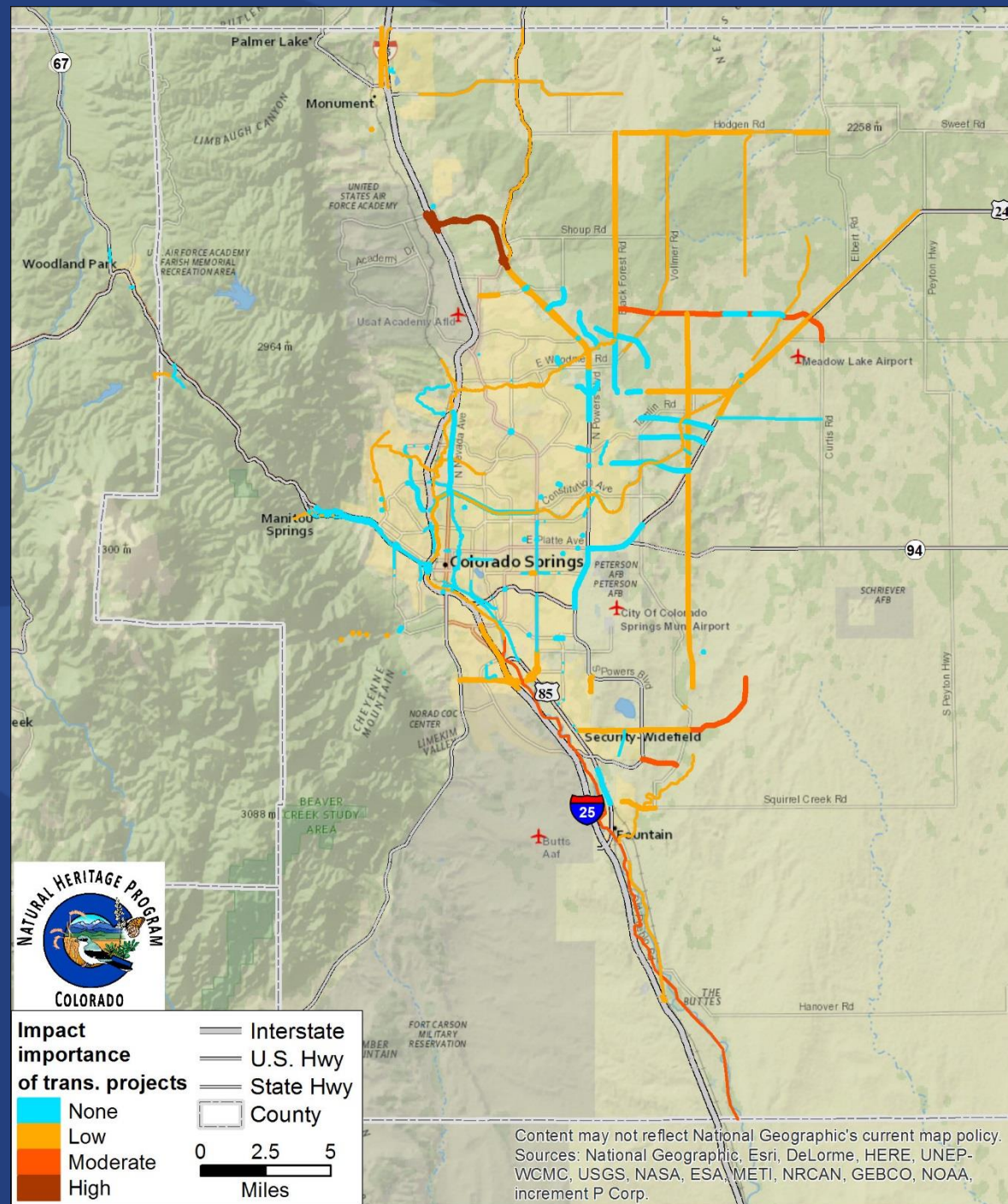
1. Create the regional ecological framework
2. Conduct cumulative effects assessment
3. ID “additional values” to attract mitigation to otherwise equal sites
4. Score areas for value
5. Calculate mitigation value scores for all sites
6. Make database available to partners

Biodiversity Targets

Shades of green indicate higher numbers of elements weighted by presence of endangered species



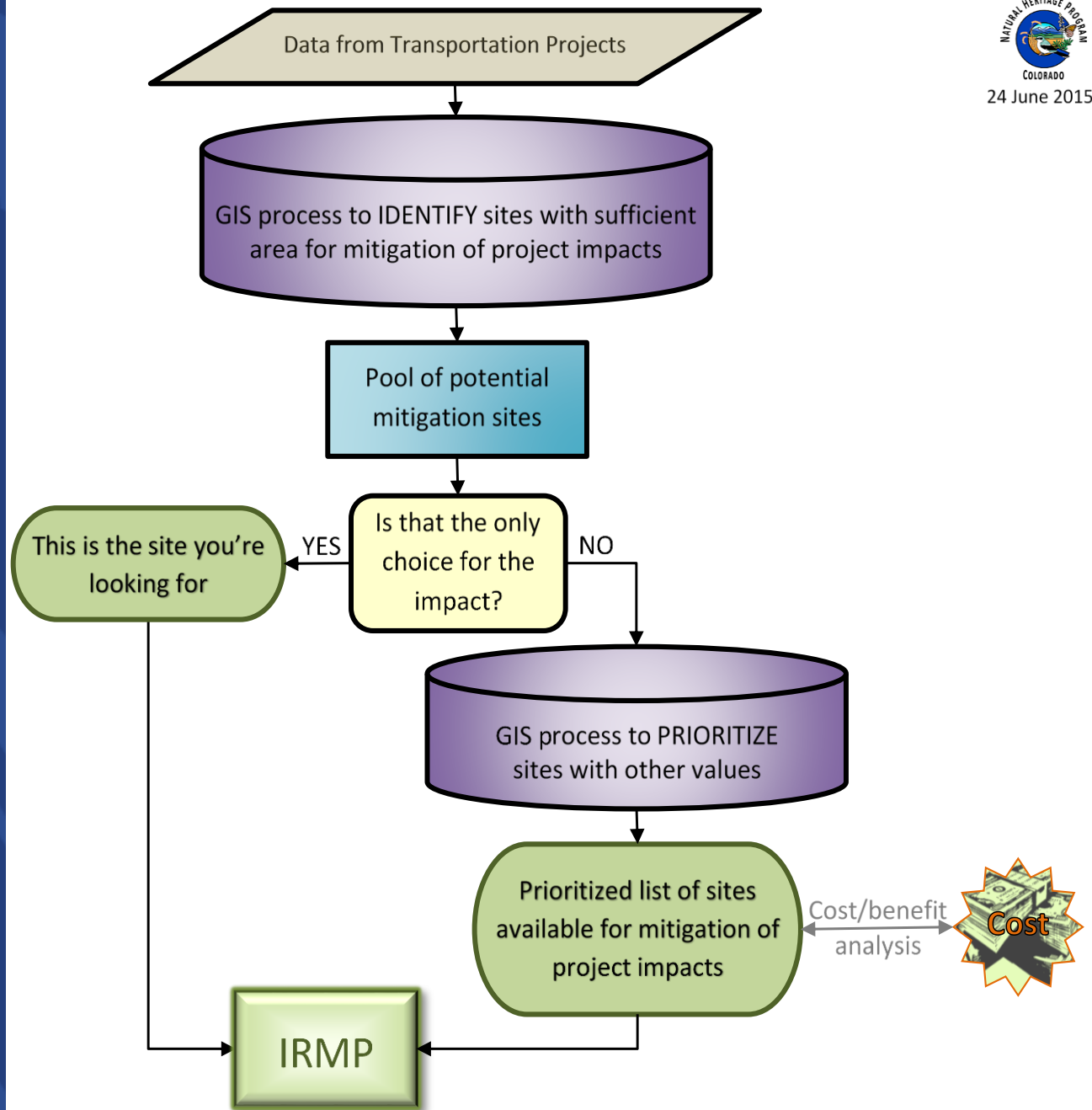
Evaluate 200 projects' impacts to inform project decision making (projects of highest transportation need and lowest impact are prioritized)



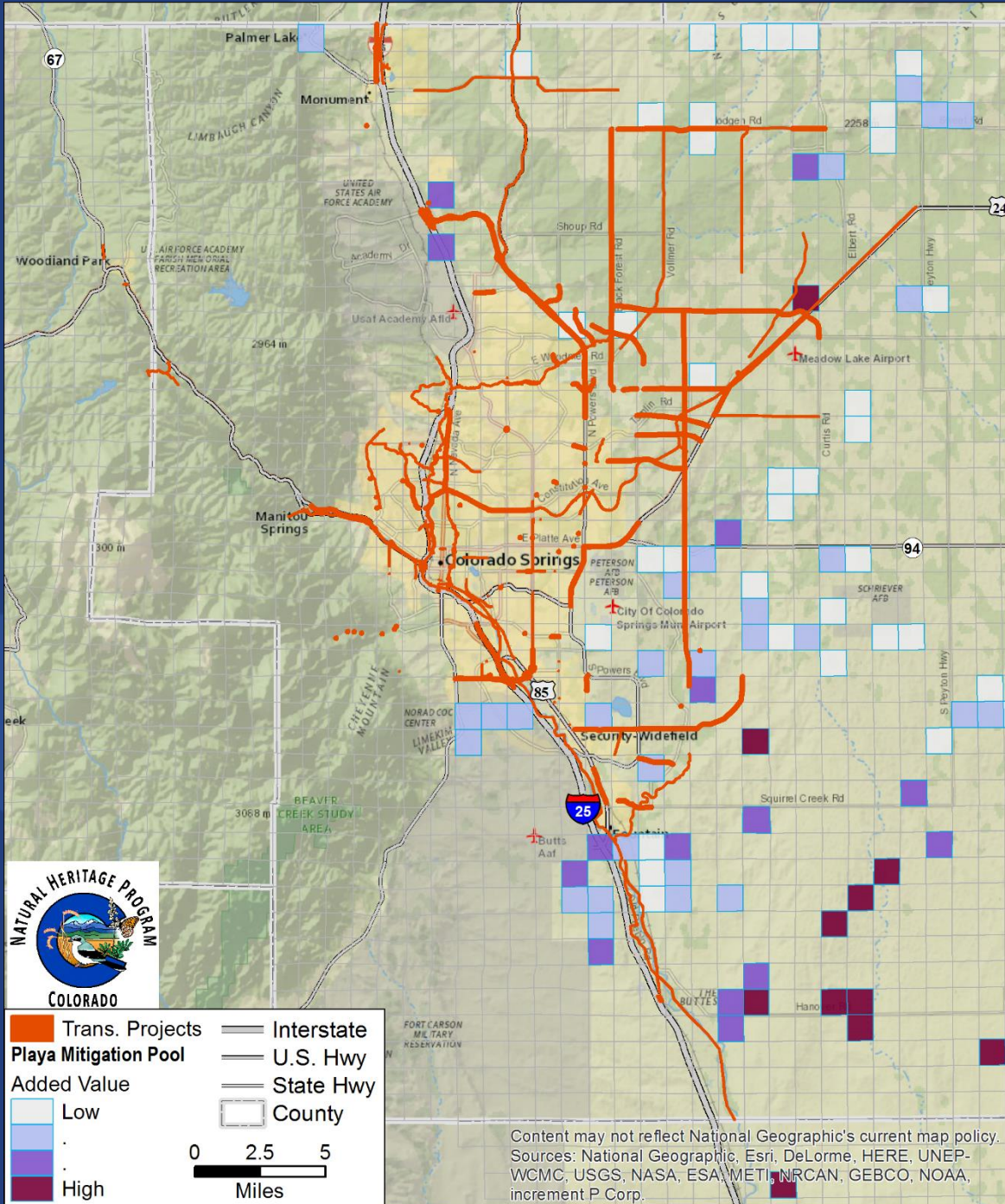
Project Impacts Database

PROJ_ID	Project Name	Actual Impact Acres	Total Project Acres	% of Project Creating Impact	% Target Ac in Bin1	% Target Ac in Bin2	% Target Ac in Bin3	Impact Importance
10	Academy Blvd. widening: Drennan Rd to Hwy 115	0.30	377.39	0.1%	0%	0%	100%	0.0
21	Black Forest Road Improvements: Woodmen Rd. to Hodgen Rd.	46.98	793.01	5.9%	0%	0%	100%	4.5
27	Briargate Pkwy./Stapleton Rd. Connection	182.29	765.84	23.8%	0%	0%	100%	17.3
44	Eastonville Rd. South Improvements: Meridian Ranch Rd. to Londonderry Dr.	11.58	40.90	28.3%	0%	0%	100%	1.1
52	Fontaine Blvd. Improvements: Easy St. to Marksheffel Rd.	175.31	377.78	46.4%	0%	0.1%	100%	16.7
55	Fountain Creek Regional Trail (#16) Construction	122.74	553.64	22.2%	11%	0%	89%	19.0
57	Fountain Creek Trail Bridge Repair	0.19	0.72	26.1%	100%	0%	0%	0.1
69	Historic Bridges Repair and Restoration	2.10	8.43	24.9%	100%	0%	0%	1.3
70	Hodgen Rd. Improvements: Black Forest Rd. to Meridian Rd. and from Eastonville Rd. to Elbert Rd.	4.20	562.14	0.7%	0%	0%	100%	0.4

Process to ID opportunity areas



Example: selecting opportunity areas for a mitigation target



Conclusions & Next Steps

- ICOET paper available
- NatureServe plans to build on this work and previous tools to develop a Mitigation Planning Tool
 - Automate the complex, technical steps as a companion to NatureServe Vista DSS for broad-based assessment and planning
- Assist more Colorado communities with this process
- Key contacts:
 - Lee Grunau, CNHP
 - Patrick Crist, NatureServe

STReaMS Database

Amy Greenwell



COMaP

Amanda Barker



Colorado the Beautiful

Seth McClean



Colorado Wetland Information Center

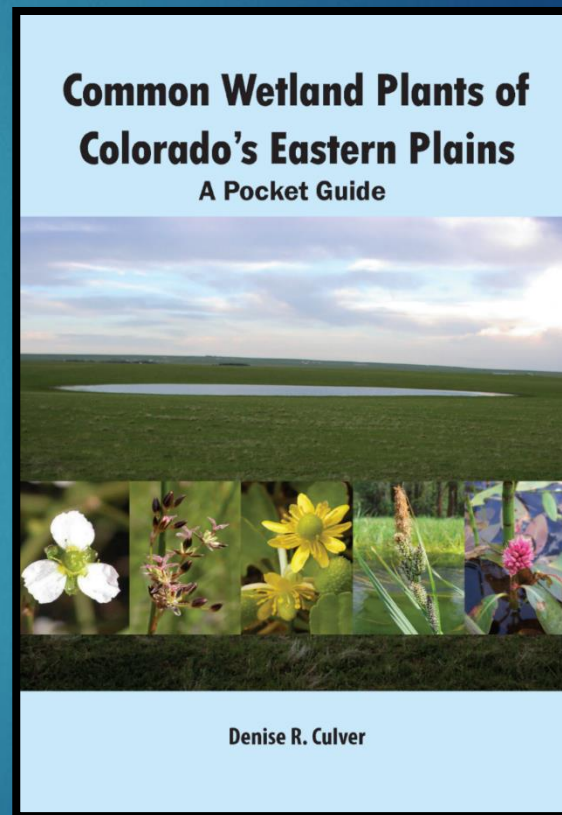
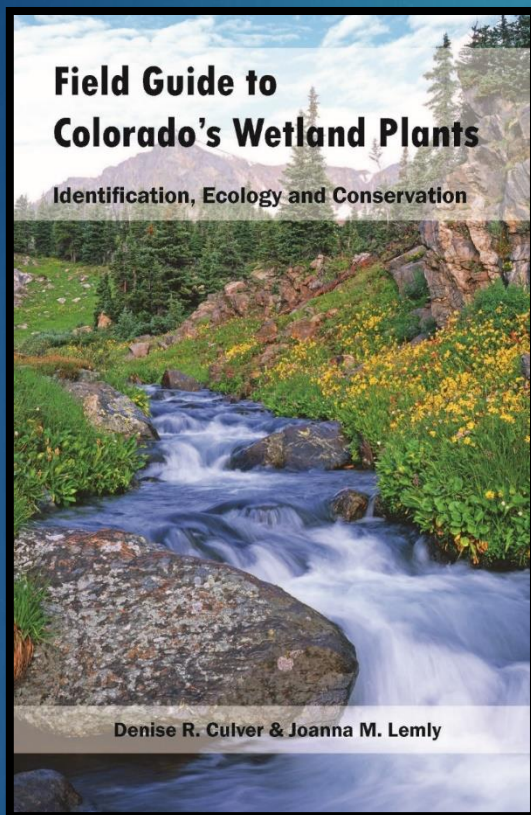
Billy Bunch



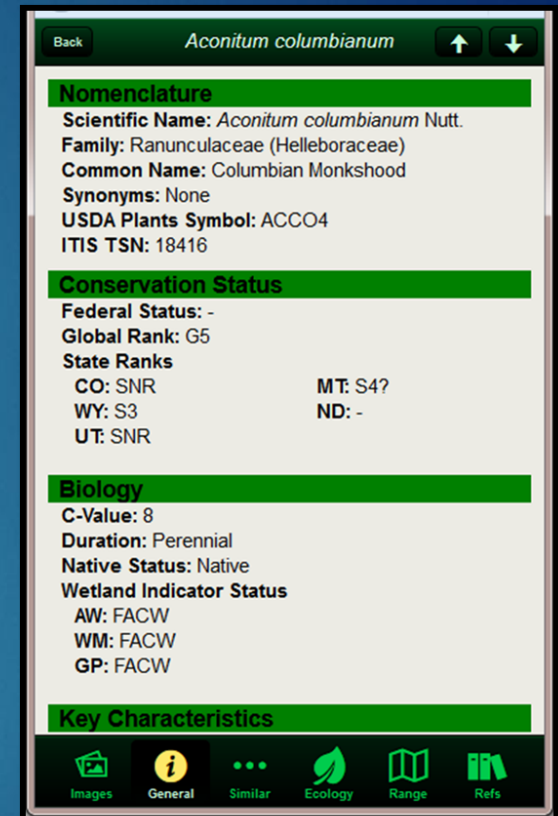
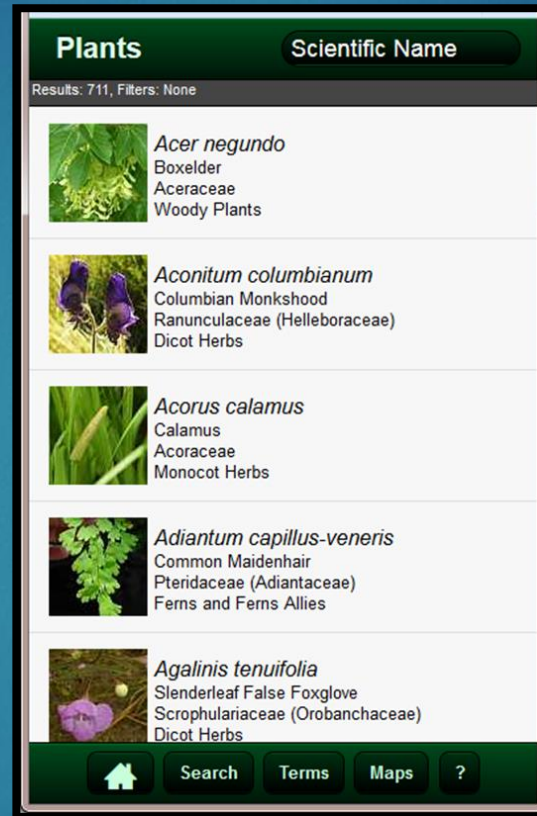
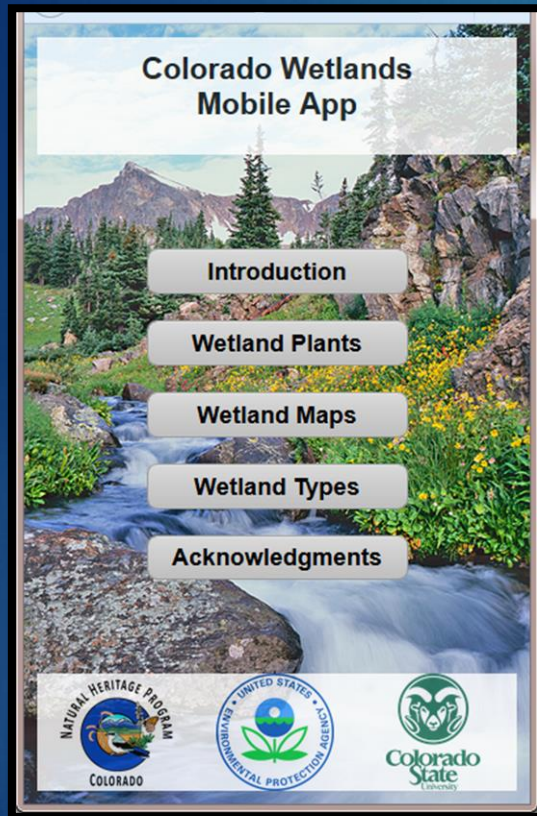
Wetlands Protection Through Collaboration: Colorado Natural Heritage Program & Environmental Protection Agency



Field Guides & Plant ID Trainings



Colorado Wetland Plants App



Download it now on Android!

...search for Colorado Wetlands Mobile App on Google Play

Colorado Wetland Information Center

[Website Link](#)

Colorado Wetland Information Center

[CWIC Home](#) [Classification »](#) [Mapping »](#) [Assessment »](#) [Conservation »](#) [Regulations](#)

[Wetland Publications](#)
[Landowner Resources](#)
[Educator Resources](#)
[CNHP Home](#)

Colorado's source for comprehensive wetland information!

Colorado's wetlands range from alpine wet meadows at the base of Mount Elbert to marshes along the Arikaree River at the Kansas border. Though they cover only 2% of the state, wetlands and riparian areas are by far the most ecologically and economically significant ecosystem in Colorado.



What is the Colorado Wetland Information Center?

The Colorado Wetland Information Center (CWIC) is a resource developed by the Colorado Natural Heritage Program through funding from the U.S. Environmental Protection Agency and Colorado Parks and Wildlife. Information within the CWIC is organized to answer five core questions:

- Classification:** What kinds of wetlands occur in Colorado?
- Mapping:** How many acres of wetlands exist in Colorado and where are they located?
- Assessment:** How many acres of wetlands exist in Colorado and where are they located?
- Conservation:** Which of Colorado's wetlands are most significant?
- Regulation:** How are wetlands regulated in Colorado?

These questions also form the backbone of CNHP's [Wetland Program Plan](#), a five-year strategic plan for our work on wetlands.

In addition, the CWIC also includes:

- Wetland Publications:** Links to all of CNHP's wetland-related books and reports.
- Landowner Resources:** Information for landowners interested in management and conservation of wetlands on their lands.
- Educator Resources:** Wetland and water oriented curriculum and ideas for

CNHP Blog

The Colorado Wetland Plant Field Guide has been published! [Buy it now!](#)

Below are the most recent articles from the [CNHP Blog](#); where CNHP staff, our partners, and the public discuss current events about CNHP and conservation in Colorado.

- [CNHP Releases STreaMS, An Endangered Fish Database](#)
- [Searching for Pocket Mice in the San Luis Valley](#)
- [Catching Colorado River Cutthroat Trout Near Trapper's Lake](#)

Collaborations & Partnerships



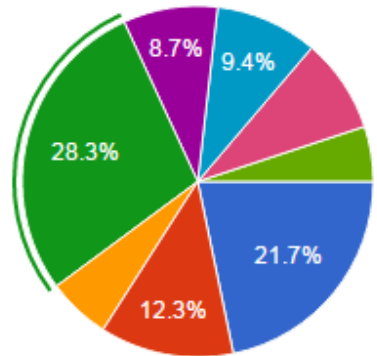
Lunch

12:00 to 12:55



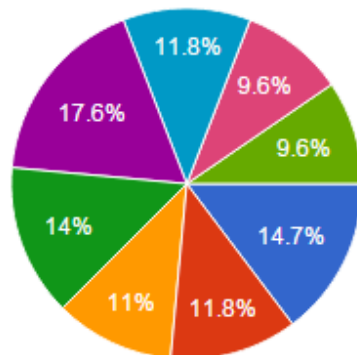
Break-out Groups

6. What breakout topic are you most interested in? (138 responses)



- Climate Change Vulnerability and Adaptation
- Climate Change Monitoring and Research
- Avoidance and Mitigation
- Surveys and Monitoring for At-Risk...
- Modeling Habitat and Distribution
- Data Development and Sharing
- Wetlands
- Invasive Species

7. What is your second favorite breakout topic? (136 responses)



- Climate Change Vulnerability and Adaptation
- Climate Change Monitoring and Research
- Avoidance and Mitigation
- Surveys and Monitoring for At Risk...
- Modeling Habitat and Distribution
- Data Development and Sharing
- Wetlands
- Invasive Species



Break-out Groups

This morning we heard about:

- Leveraging
- New things happening
- Novel partnerships
- Novel approaches to conservation



Break-out Groups

Surveys and Monitoring: Grand Ballroom B

Group 1 (Facilitator: Rob Schorr)

Group 2 (Facilitator: Brad Lambert)

Climate Change Vulnerability and Adaptation: Grey Rock Room

Group 1 (Facilitator: Karin Decker)

Group 2 (Facilitator: Renée Rondeau)

Climate Change Monitoring and Research: Virginia Dale Room (Facilitator: Jill Handwerk)

Avoidance and Mitigation: Room 390 (Facilitator: Patrick Crist)

Modeling Habitat and Distribution: Grand Ballroom B (Facilitator: Michelle Fink)

Data Development and Sharing: Grand Ballroom B (Facilitator: Michael Menefee)

Wetlands: Laporte Room (Facilitator: Joanna Lemly)

Invasive Species: Room 392 (Facilitator: Pam Smith)



Break-out Questions

- What are the current critical needs for this topic?
- What existing resources could be devoted to needs for this topic?
- What new resources are needed to move forward?
- What new partnerships are needed to address this topic?
- How can CNHP and others here help you better?



Break-Out Group Reports and Discussion

- What are the current critical needs for this topic?
- What existing resources could be devoted to needs for this topic?
- What new resources are needed to move forward?
- What new partnerships are needed to address this topic?
- How can CNHP and others here help you better?



Reports from Break-out Groups

Surveys and Monitoring: Grand Ballroom B

Group 1 (Facilitator: Rob Schorr)

Group 2 (Facilitator: Brad Lambert)

Climate Change Vulnerability and Adaptation: Grey Rock Room

Group 1 (Facilitator: Karin Decker)

Group 2 (Facilitator: Renée Rondeau)

Climate Change Monitoring and Research: Virginia Dale Room (Facilitator: Jill Handwerk)

Avoidance and Mitigation: Room 390 (Facilitator: Patrick Crist)

Modeling Habitat and Distribution: Grand Ballroom B (Facilitator: Michelle Fink)

Data Development and Sharing: Grand Ballroom B (Facilitator: Michael Menefee)

Wetlands: Laporte Room (Facilitator: Joanna Lemly)

Invasive Species: Room 392 (Facilitator: Pam Smith)



Thank You!

Contacts for anything connected to today's meeting:

- David G. Anderson
 - 970-980-4680
- Lee Grunau
 - 970-491-2844



Follow up steps:

- We'll send you notes from the break-outs and discussion
- We'll send you a link to our website with video, notes, and presentations from today when they are ready
- We'll have a short survey to help us make this better in the future



The Mayor of Old Town

