



Artist Statement:

Katie Abdel

I was raised in Colorado and I am currently a senior at Colorado State University double majoring in graphic design and marketing. I fell in love with art at a very young age. I have always been more shy and introverted, and throughout the years I have learned that art is the best way for me to express myself and have a strong, unique voice. The best feeling in the world is when my artwork makes someone actually want to stop and appreciate it.

When I was younger, I loved to draw. About 8 years ago, I started taking more art classes and I fell in love with painting. I will always love getting paint all over my hands and my clothes, that is how you know you're creating great art. The messier I am when I have finished a piece, the more I love it. In college, I decided to try graphic design. I enjoy how bold and precise the colors and the shapes can be. I love creating a lot of detail in my artwork, I believe that details are what draws someone into a work of art.

Title**Original Format**

Figure 1: Sweet Dreams Dinosaurs	Photoshop and Illustrator, 8 in x 10 in pages
Figure 2: Sweet Dreams Dinosaurs (detail)	Photoshop and Illustrator, 8 in x 10 in pages
Figure 3: Sweet Dreams Dinosaurs (detail)	Photoshop and Illustrator, 8 in x 10 in pages
Figure 4: The Shining Book Jacket	Illustrator, 21 in x 9.5 in
Figure 5: Graduated Style Magazine	InDesign, 8.25 in x 11.75 in pages
Figure 6: ONYX Logo	Illustrator, 17 in x 11 in
Figure 7: Ragtime Vinyl Album	Illustrator, 17 in x 11 in
Figure 8: Penguin Classics Book Series	Illustrator and Photoshop, 17 in x 11 in
Figure 9: Archetype	Illustrator, 17 in x 11 in
Figure 10: The Electric Touch	Illustrator, 17 in x 11 in

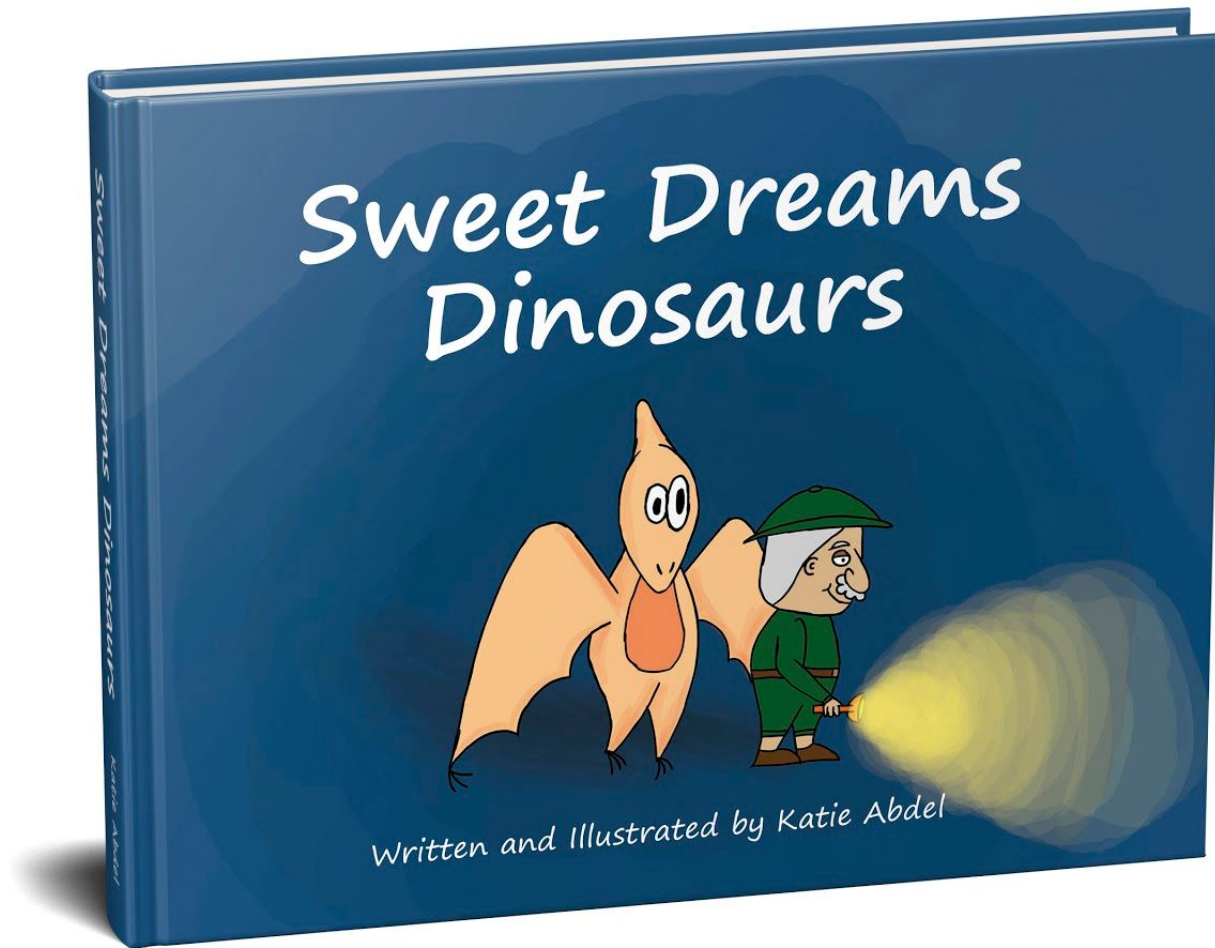


Figure 1: Sweet Dreams Dinosaurs



Figure 2: Sweet Dreams Dinosaurs (detail)



Figure 3: Sweet Dreams Dinosaurs (detail)



Figure 4: The Shining Book Jacket



Figure 5: Graduated Style Magazine



Figure 6: ONYX Logo



Figure 7: Ragtime Vinyl Album



Figure 8: Penguin Classics Book Series

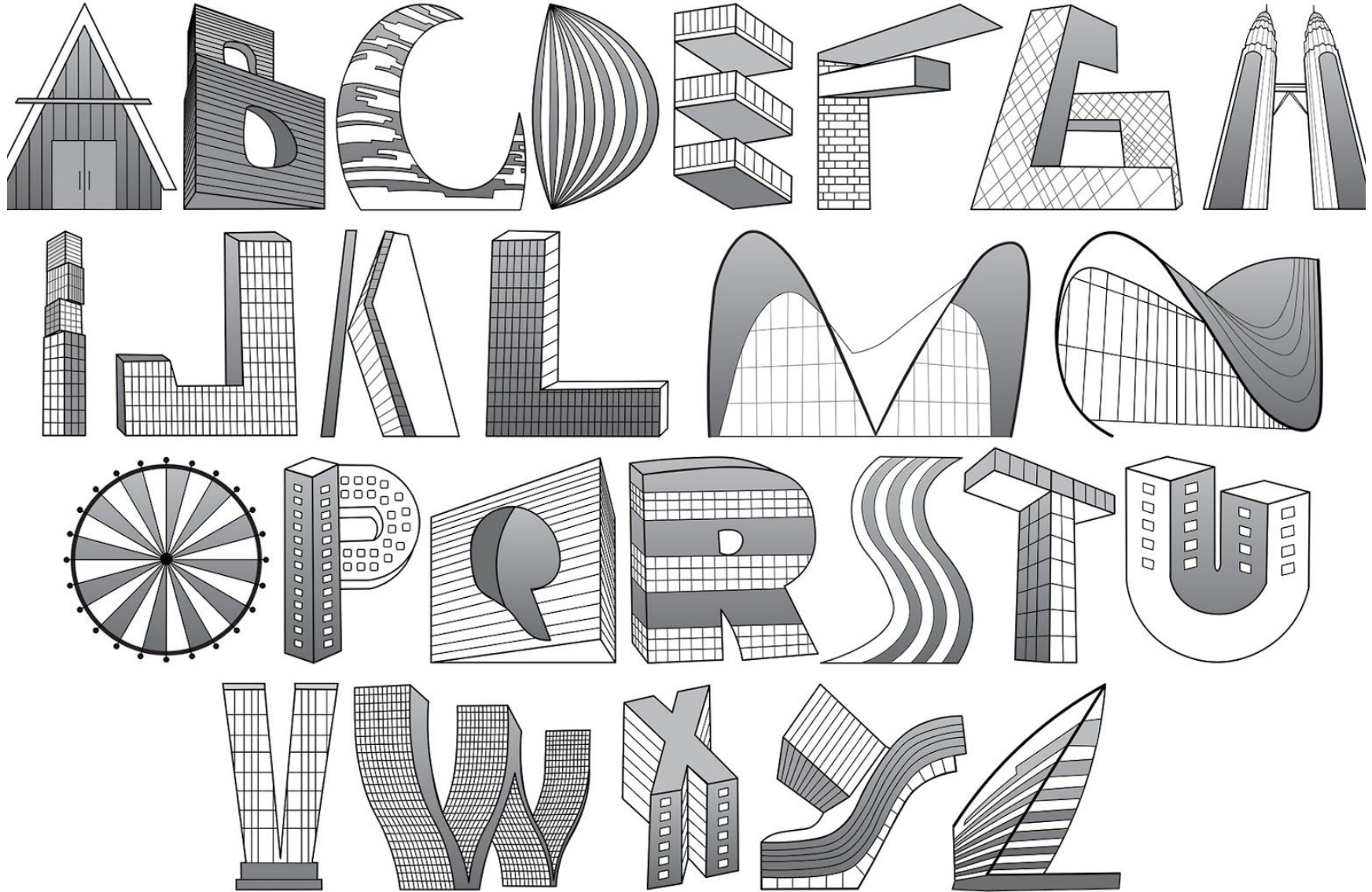


Figure 9: Archetype

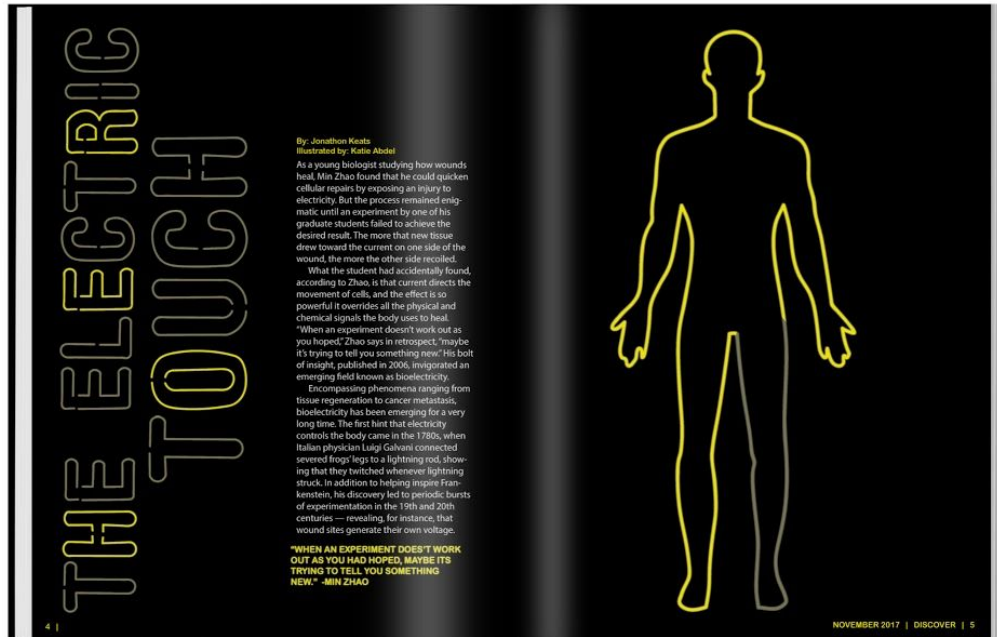


Figure 10: The Electric Touch