

# Library Connection

Vol. 7, No. 1

September 1992

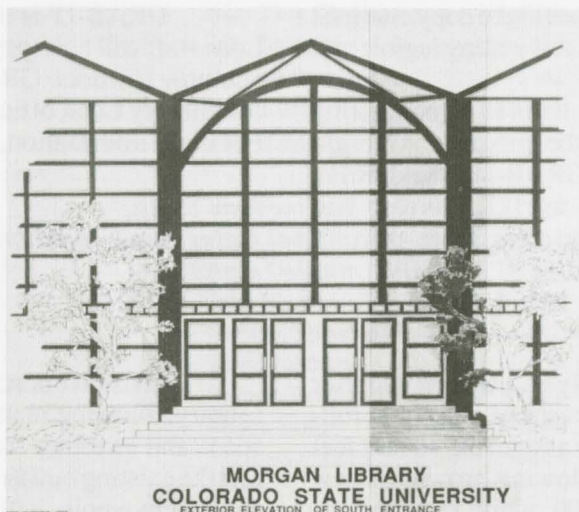
Colorado State University Libraries

## Students Design New Library

During spring semester 1992, students enrolled in a junior-level Interior Design course (ID 366) taught by Professor Larry Bamford were assigned the new addition to Morgan Library as their term project. The focus of the project was to assist the library planners to conceptualize and visualize a library for the 21st century.

As a part of the research phase of the design process, the students attended briefings and met extensively with library staff. Each student then independently designed a three-part project.

While there was considerable latitude for creativity and innovation, as well as freedom to experiment with materials within a given format, each project was required to include a floor plan for the renovation and redesign of the first floor of Morgan Library, an elevation of the exterior design for the new addition to Morgan



Library (see picture accompanying this article), and a detailed perspective of one office, area, or service point.

The final requirement was to assume the role of a professional designer presenting a design proposal to a prospective client – in this case, the library planners. The individual presentations were made before a panel of jurors, who evaluated both the projects and the presentations and shared their criticism and their acclaim with each student. Four projects received

awards ranging from \$200 to \$50, and three additional projects were singled out for honorable mention.

Several of the projects will be on exhibit in Morgan Library during November and December.

*Joan Chambers*  
Director of Libraries

## State Board of Agriculture Endorses Library Plan

At its meeting in May, the State Board of Agriculture endorsed the program plan for the remodel and new addition to Morgan Library – a four-phased plan to bring Colorado State University Library into the 21st century.

Phase I will add climate control to the Library's existing storage facility and will replace the raw wooden shelves with metal moveable compact and high-density

shelving to gain shelf space needed until the completion of Phase II. Phase I is scheduled to be implemented between December 1992 and December 1993 and is expected to cost \$775,000.

Phase II will add 100,140 assignable square feet to Morgan Library, providing for the many information services for the 21st century that will require increased

**continued on page 2**



## “GRAB-IT” from Interlibrary Loan

Now interlibrary loan (ILL) services are quick and easy from any electronic database. GRAB-IT, a computer program designed and written by the staff of the University Libraries' Interlibrary Loan Department, lets you capture citations from any electronic database. It then formats those citations into a file that you e-mail to the Interlibrary Loan Department. If you are on the VINES network, your requests are e-mailed automatically.

GRAB-IT, which debuted as a test project in March 1992, has been very successful. Users enjoy not having to copy citations by hand and the ILL staff appreciates getting legible and complete citations.

ILL patrons have been helpful in suggesting changes and enhancements to the program. “We are working on a new version of GRAB-IT,” said Brian Ashworth, student programmer for ILL. “We’ve had requests from people wanting to save more than 15

*Users enjoy not having to copy citations by hand and the ILL staff appreciates getting legible and complete citations.*

citations, and we’d like to allow downloading to diskette.” The new version will be available in early November.

GRAB-IT currently runs on IBM PCs and compatibles. The ILL Department was hoping to release a Macintosh version this year, but the necessary equipment is not yet available. “So many in our campus community are in a Macintosh environment,” said Ashworth, “we’d like to also provide them with this easy ILL access. We simply lack the equipment.”

GRAB-IT is simple to use and the Interlibrary Loan staff will be happy to visit your department to show you how it works. GRAB-IT is available free from the Interlibrary Loan office in Morgan Library, Room 210. For more information, call them at ext. 1-1867.

*Jane Smith,  
Acting Head, Interlibrary Loan Department*

### Library Plan from page 1

power and communication supply and will enable user seating to be increased to 12 percent of student enrollment. Of the total added, 44,800 assignable square feet will be used for book stacks, allowing growth of new collections through the year 2000, while reducing the percentage of collections stored to 30 percent.

Phase II is scheduled to be completed between June 1993 and June 1996 at a cost of \$13,255,000.

Phase III is renovation of the existing Morgan Library, allowing many departments to move into new space and enabling reassignment of released space, so that the existing building and the addition can function as a coherent whole, with effective and flexible use of all library space. Phase III is scheduled to be carried out between June 1996 and November 1998 at a cost of \$3,538,000.

Of the total cost, Colorado State University is committed to raising \$5,000,000 in gifts and donations, while the remaining \$12,318,000 will be requested from the Legislature.

Phase IV consists of a second addition to Morgan Library, allowing for collection growth through the year 2005 and enabling the return of materials now inappropriately located in storage. The second addition will result in reducing the percentage of all collections stored to 20 percent and increasing user seating to 18 percent of the student body. Due to the dynamic nature of technologies, campus enrollment activities, and budget concerns, Phase IV will be covered in a new program plan in approximately 1998-99. This will allow for a more complete and accurate assessment of the needs at that time, as well as our needs beyond the year 2005. It is projected that Phase IV will be implemented between May 1999 and March 2002 at a cost estimated to be \$7,925,000.

*Joan Chambers, Director of Libraries*

## Exhibits Calendar

Second floor, Morgan Library  
September through December 1992

“Columbus Quincentenary:  
Age of Discovery, Age of Conflict”  
September and October

“International Week”  
November 1-November 15

“Library of the 21st Century”  
November 16-December 21



## Recent Faculty Appointments

### Minna Sellers

The newest faculty member of the Libraries is Minna Sellers. Minna joined the Libraries on July 1 as an assistant professor in the Sciences and Technology Department. She will serve as a science reference librarian and materials selector for the biomedical sciences and veterinary medicine as well as supervisor of the Veterinary Teaching Hospital Branch Library.

For the past three years, she has been a reference librarian and education coordinator at the Rush-Presbyterian-St. Luke's Medical Center, Rush University, Chicago, Illinois. She received a B.A. from the University of New Mexico and an M.S. from the Graduate Library School, University of Chicago. Minna brings with her both extensive online database searching experience and a love of the health sciences. Minna's office is in Room 214, Morgan Library, phone 1-1877.



*Minna Sellers (Photo by Tom Delaney)*



*Susan Schwellenbach (Photo by Tom Delaney)*

### Susan Schwellenbach

In response to the increase in off-campus courses and University programs, the Libraries recruited Susan Schwellenbach to serve in a temporary capacity as off-campus library services librarian. Susan is a graduate of Colorado State University with a B.A. in humanities. She went on to graduate school at the University of Denver and received an M.A. in library science.

Prior to coming to the Libraries, Susan was an information resource manager at Design Workshop, Inc. Since joining the staff on May 26, she has been working closely with the academic vice president's office and Continuing Education and is conducting a needs assessment complete with funding proposals for extended library services to existing Colorado State University programs. Susan's office is located in Room 2, Morgan Library, phone 1-6952.

## Ann Okerson: Libraries' 1992-93 Guest Scholar

Ann Lillian Okerson, the current Director of the Office of Scientific and Academic Publishing (OSAP), Association of Research Libraries (ARL), will be speaking November 12 in Room 202-204 of the Lory Student Center. The topic of her talk will be the current state of scholarly communication and the effect of new technologies upon publishing.

Ms. Okerson has been the Director of OSAP since 1990. This is a new office established by the ARL membership in 1989; it was designed to address the significant problem they perceived with the existing scholarly publishers' difficulties in dealing with the economic issues of libraries and their users. The purpose of OSAP is fourfold: (1) to educate library, scholarly and publishing communities about this problem; (2) to sup-

port not-for-profit publishing; (3) to explore technical alternatives to traditional publishing methods; and (4) to take an interest in the quantity and quality of academic publishing.

Ms. Okerson travels extensively, speaking to universities, publishers, libraries, and scholars on these topics. Her background has prepared her well: she served as head of the Serials Division of Simon Fraser University Library in Vancouver, B.C., for a number of years and later was manager of library services for Jerry Apler, Inc. (Antiquarian Booksellers) in New York City. She has written a number of articles on subjects such as electronic journals and other issues related to scholarly publishing.

*Jean Beam, Social Sciences and Humanities Librarian*



# Materials Selection Responsibility

Major responsibility for the growth and development of the Libraries collections falls to the selector assigned to each subject area. The librarians listed below serve as liaisons for the departments and/or subject areas indicated.

SUBJECTS	SELECTOR	PHONE	VINES E-MAIL ADDRESS
Accounting and Taxation	Doug Ernest	1-1861	DErnest@socsci@libraries
Agricultural and Resource Economics	Joan Beam	1-1861	JBeam@socsci@libraries
Agricultural and Chemical Engineering	Michael Culbertson	1-1874	MCulbertson@scitech@libraries
Agronomy (includes General Agriculture)	May Ying Chau	1-1877	MChau@scitech@libraries
Anatomy and Neurobiology	Minna Sellers	1-1877	MSellers@scitech@libraries
Animal Rights	Barbara Branstad	1-1862	BBranstad@socsci@libraries
Animal Sciences	Minna Sellers	1-1877	MSellers@scitech@libraries
Anthropology	Anna DeMiller	1-1858	ADeMiller@socsci@libraries
Art	Joel Rutstein	1-1838	JRutstein@admin@libraries
Atmospheric Science	Michael Culbertson	1-1874	MCulbertson@scitech@libraries
Biochemistry	Minna Sellers	1-1877	MSellers@scitech@libraries
Biology	Suzanne Johnson	1-6847	SJohnson@scitech@libraries
Biomedical Sciences	Minna Sellers	1-1877	MSellers@scitech@libraries6
Chemistry	Tom Moothart	1-1875	TMoothart@scitech@libraries
Civil Engineering	Michael Culbertson	1-1874	MCulbertson@scitech@libraries
Clinical Sciences	Minna Sellers	1-1877	MSellers@scitech@libraries
Colorado Documents	Suzanne Taylor	1-1880	STaylor@govdoc@libraries
Communication Disorders	Beth Fuseler	1-1876	BFuseler@scitech@libraries
Computer Information Systems	Doug Ernest	1-1861	DErnest@socsci@libraries
Computer Science	Tom Moothart	1-1875	TMoothart@scitech@libraries
Current Awareness	Barbara Branstad	1-1862	BBranstad@socsci@libraries
Design, Merchandising, and Consumer Sciences	Barbara Branstad	1-1862	BBranstad@socsci@libraries
Earth Resources	Tom Moothart	1-1875	TMoothart@scitech@libraries
Economics	Joan Beam	1-1861	JBeam@socsci@libraries
Education	Judy Berndt	1-1860	JBerndt@socsci@libraries
Electrical Engineering	Michael Culbertson	1-1874	MCulbertson@scitech@libraries
Engineering Sciences	Michael Culbertson	1-1874	MCulbertson@scitech@libraries
English Language and Literature	Evelyn Haynes	1-1859	EHaynes@socsci@libraries
Entomology	Suzanne Johnson	1-6847	SJohnson@scitech@libraries
Environmental Health	Suzanne Johnson	1-6847	SJohnson@scitech@libraries
Exercise and Sport Science	Beth Fuseler	1-1876	BFuseler@scitech@libraries
Federal Documents (U.S.)	Fred Schmidt	1-1881	FSchmidt@govdoc@libraries
Fiction	Barbara Branstad	1-1862	BBranstad@socsci@libraries
Finance and Real Estate	Doug Ernest	1-1861	DErnest@socsci@libraries
Fishery and Wildlife Biology	Suzanne Johnson	1-6847	SJohnson@scitech@libraries
Food Science and Human Nutrition	Beth Fuseler	1-1876	BFuseler@scitech@libraries
Foreign Language and Literature	Judy Berndt	1-1860	JBerndt@socsci@libraries
Forest Sciences	May Ying Chau	1-1877	MChau@scitech@libraries
General Interest	Barbara Branstad	1-1862	BBranstad@socsci@libraries
General Sciences	Dorothy Leising	1-5227	DLeising@scitech@libraries
History	Doug Ernest	1-1861	DErnest@socsci@libraries
Horticulture	May Ying Chau	1-1877	MChau@scitech@libraries
Human Development and Family Studies	Anna DeMiller	1-1858	ADeMiller@socsci@libraries
Industrial Sciences	Michael Culbertson	1-1874	MCulbertson@scitech@libraries
Law	Judy Berndt	1-1860	JBerndt@socsci@libraries
Library Science	Halcyon Enssle	1-1865	HEnssle@access@libraries
Management	Doug Ernest	1-1861	DErnest@socsci@libraries
Maps	Suzanne Taylor	1-1880	STaylor@govdoc@libraries
Marketing	Doug Ernest	1-1861	DErnest@socsci@libraries
Mathematics	Tom Moothart	1-1875	TMoothart@scitech@libraries



<b>SUBJECTS</b>	<b>SELECTOR</b>	<b>PHONE</b>	<b>VINES E-MAIL ADDRESS</b>
Mechanical Engineering	Michael Culbertson	1-1874	MCulbertson@scitech@libraries
Microbiology	Minna Sellers	1-1877	MSellers@scitech@libraries
Military Science	Doug Ernest	1-1861	DErnest@socsci@libraries
Music, Theatre, and Dance	Joan Beam	1-1861	JBeam@socsci@libraries
Newspapers	Emily Taylor	1-0593	ETaylor@socsci@libraries
Occupational Therapy	Judy Berndt	1-1860	JBerndt@socsci@libraries
Pathology	Minna Sellers	1-1877	MSellers@scitech@libraries
Philosophy	John Schmitt	1-1859	JSchmitt@socsci@libraries
Physics	Tom Moothart	1-1875	TMoothart@scitech@libraries
Physiology	Minna Sellers	1-1877	MSellers@scitech@libraries
Plant Pathology and Weed Sciences	May Ying Chau	1-1877	MChau@scitech@libraries
Political Science	John Schmitt	1-1859	JSchmitt@socsci@libraries
Psychology	Barbara Branstad	1-1862	BBranstad@socsci@libraries
Radiological Health Sciences	Minna Sellers	1-1877	MSellers@scitech@libraries
Range Science	May Ying Chau	1-1877	MChau@scitech@libraries
Recreation Resources and Landscape			
Architecture	Beth Fuseler	1-1876	BFuseler@scitech@libraries
Social Work	Anna DeMiller	1-1858	ADeMiller@socsci@libraries
Sociology	Anna DeMiller	1-1858	ADeMiller@socsci@libraries
Special Collections	John Newman	1-1844	JNewman@admin@libraries
Speech Communication	Barbara Branstad	1-1862	BBranstad@socsci@libraries
Statistics	Tom Moothart	1-1875	TMoothart@scitech@libraries
Technical Journalism	Barbara Branstad	1-1862	BBranstad@socsci@libraries
Veterinary Medicine	Minna Sellers	1-1877	MSellers@scitech@libraries
Wildlife Biology	Suzanne Johnson	1-6847	SJohnson@scitech@libraries
<b>DIVERSITY</b>			
Asian-American	John Schmitt	1-1859	JSchmitt@socsci@libraries
Black	Joan Beam	1-1861	JBeam@socsci@libraries
Disabled	Jean Winkler	1-1847	JWinkler@catalog@libraries
Gay and Lesbian	Judy Berndt	1-1860	JBerndt@socsci@libraries
Hispanic	Nora Copeland	1-1846	NCopeland@catalog@libraries
Native American	Doug Ernest	1-1861	DErnest@socsci@libraries
Women	Barbara Branstad	1-1862	BBranstad@socsci@libraries
<b>INTERDISCIPLINARY PROGRAMS</b>			
Asian Studies	John Schmitt	1-1859	JSchmitt@socsci@libraries
Criminal Justice Studies	Anna DeMiller	1-1858	ADeMiller@socsci@libraries
Ecology	Suzanne Johnson	1-6847	SJohnson@scitech@libraries
Gerontology Studies	Anna DeMiller	1-1858	ADeMiller@socsci@libraries
Latin American Studies	Doug Ernest	1-1861	DErnest@socsci@libraries
Religious Studies	John Schmitt	1-1859	JSchmitt@socsci@libraries
Russian and East Central European Studies	John Schmitt	1-1859	JSchmitt@socsci@libraries
Women's Studies	Barbara Branstad	1-1862	BBranstad@socsci@libraries
<b>REFERENCE</b>			
General	Anna DeMiller	1-1858	ADeMiller@socsci@libraries
Sciences and Technology	Suzanne Johnson	1-6847	SJohnson@scitech@libraries
Social Sciences and Humanities	Anna DeMiller	1-1858	ADeMiller@socsci@libraries

## *The Corner on Collection Development*

# The Professional Travel Corporation Endowment

Several years ago, when the Libraries' ARL (Association of Research Libraries) status was in jeopardy, the Professional Travel Corporation (a travel agency with an office in Fort Collins) offered to help redress the situation by contributing to the Libraries a portion of monies from travel booked by University staff.

This generous act has resulted in the establishment of an endowed fund used for the purchase of books. Over the years the fund has grown until it is now one of the Libraries' largest endowments. Reflecting the company's mission, books bought with the fund emphasize the international arena, including overseas development, foreign languages, history, international commerce and trade, and, of course, travel and exploration. These books have gift plates stating the following: "The purchase of this book was made possible by a contribution from the Professional Travel Corporation."

Professional Travel Corporation's contributions will be highlighted in a forthcoming library exhibit on the Columbian quincentenary (see the Exhibits Calendar in this newsletter). Several books going on display were purchased from this endowment. Examples of titles are *Atlas of Columbus and the Great Discoveries*, *Stolen*

*Continents: the Americas Through Indian Eyes Since 1492*, and *The Double Reckoning of Christopher Columbus* (poems). A large twelve-volume set, *Biblioteca Iberoamericana*, is on order from Madrid, Spain.

This exhibit exemplifies how Professional Travel Corporation is enriching the collections of the University Libraries. To honor their support, a reception is planned in the early fall. Watch for announcements.

*Joel Rutstein*  
Collection Development Officer

*Library Connection* is published four times during the academic year to acquaint users with the resources of Colorado State University Libraries. Requests to be placed on the mailing list or comments about the newsletter should be referred to the Newsletter Editorial Board: Anna DeMiller, Chair (491-1858 or [ademille@vines.colostate.edu](mailto:ademille@vines.colostate.edu)), Tom Delaney, and Halcyon Enssle.

**Colorado  
State**  
University

Colorado State University Libraries  
Fort Collins, Colorado 80523