



## **Artist Statement**

**Abigail Galvin**

Through documentation or metaphor, I seek to understand how both our sense of agency and our sense of restriction are deeply tied to an awareness of our own bodies. The result of this process is two interrelated series of work. On one hand, I use abject elements of the body to analyze issues of identity and control. On the other hand, motion and interaction explore an ecstatic sense of freedom and connection. In all of the work, the human body is focused on as an interface where these conflicting senses merge and create tension.

	<u>Title</u>	<u>Media</u>	<u>Original Format</u>
<b>Figure 1:</b>	Squilt	Fibers	Graphite, thread, gut paper, 60 in x 36 in
<b>Figure 2:</b>	Squilt (detail)	Fibers	Graphite, thread, gut paper, 60 in x 36 in
<b>Figure 3:</b>	White Walls	Installation	Mixed media, 72 in x 72 in x 90 in
<b>Figure 4:</b>	White Walls (detail)	Installation	Mixed media, 72 in x 72 in x 90 in
<b>Figure 5:</b>	Sorry/Not Sorry	Photo/performance	Mixed media, 36 in x 48 in
<b>Figure 6:</b>	Sorry/Not Sorry (detail)	Photo/performance	Mixed media, 36 in x 48 in
<b>Figure 7:</b>	Meat People	Photo	Digital print, 11 in x 14 in
<b>Figure 8:</b>	Self Portrait	Fibers	Fibers and found objects, 60 in x 36 in
<b>Figure 9:</b>	Self Portrait (detail)	Fibers	Fibers and found objects, 60 in x 36 in
<b>Figure 10:</b>	Large Useless Body	Sculpture (video)	Plastic, fans, microprocessor, MP4, 1920x1080, 00:29min, 344 Mb <b>Date of Creation:</b> 12/10/16 <b>Course:</b> ART 495-L01 <b>Programs Used:</b> Adobe Quicktime Player



**Figure 1: Squilt**

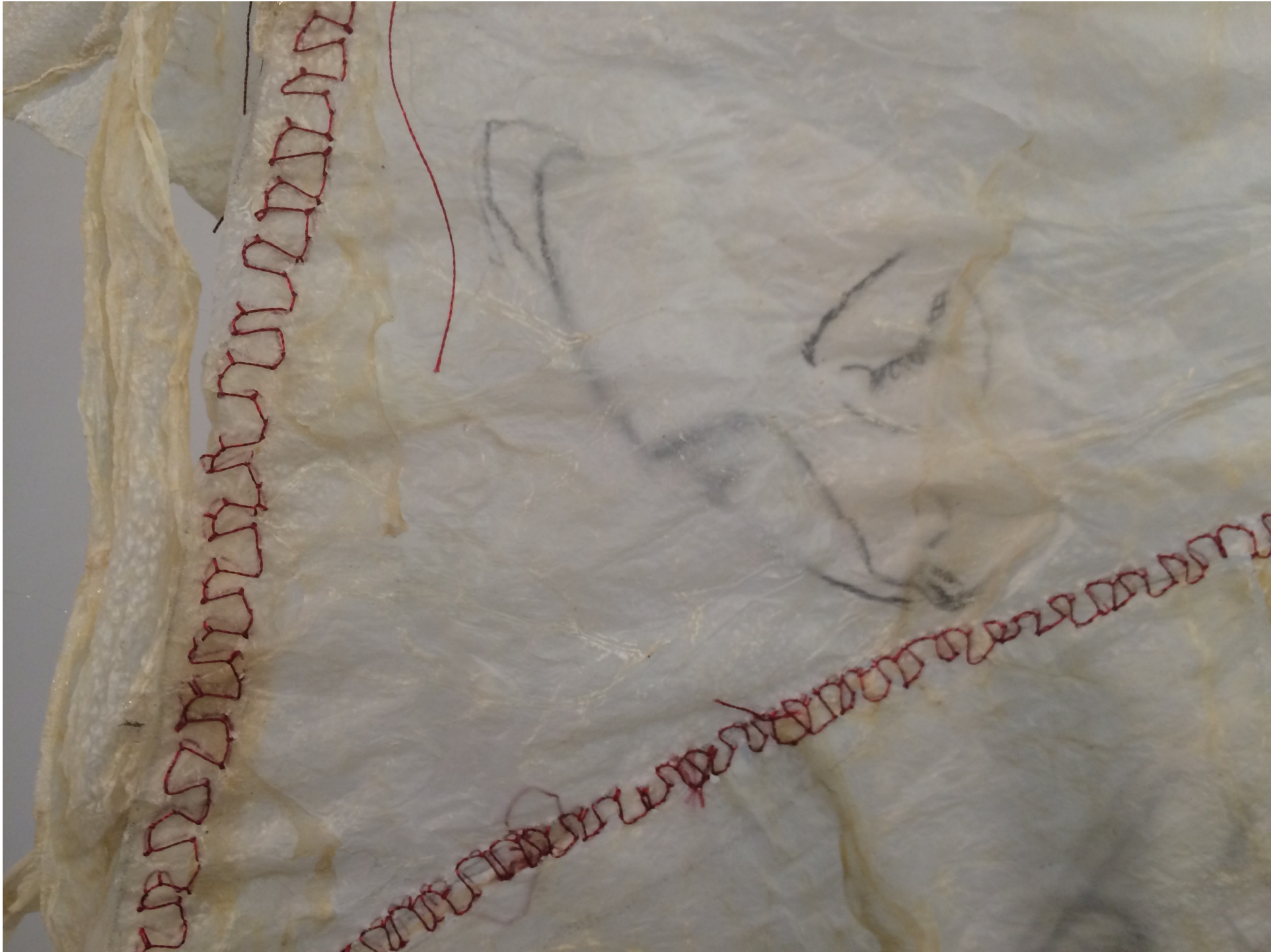


Figure 2: Squilt (detail)



**Figure 3: White Walls**



Figure 4: White Walls (detail)



Figure 5: Sorry/Not Sorry



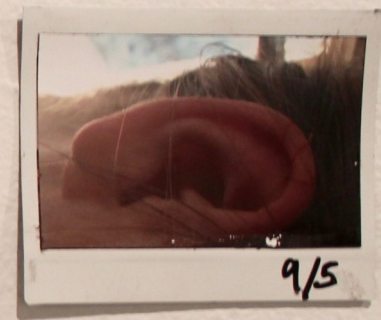
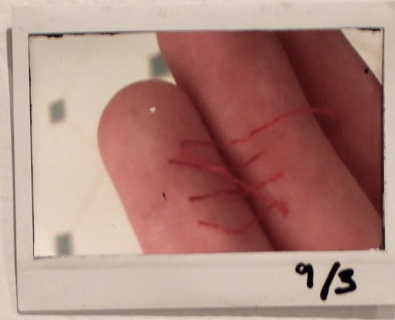


Figure 6: Sorry/Not Sorry (detail)



**Figure 7: Meat People**



Figure 8: Self Portrait



Figure 9: Self Portrait (detail)