

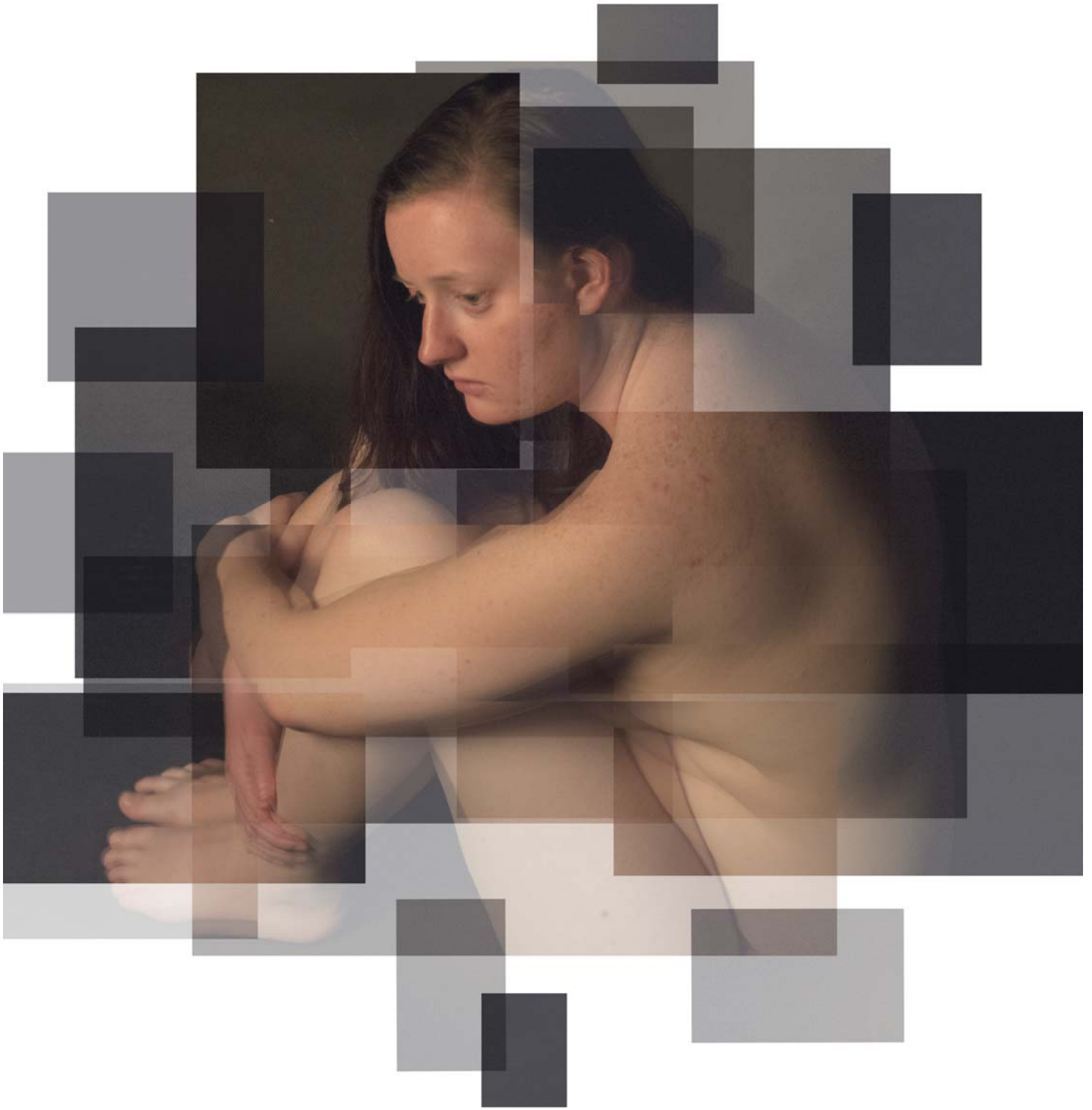


## **Artist Statement**

### **Gabrielle Mouton Kenemuth**

Throughout the lifetime of every individual there is an evolution of self that takes place. With every new experience we shatter, and undergo a process of reconstruction. Assimilating pieces of our world and drawing from our relationships, we evaluate the newly filled and reflect on the remaining spaces, recombining ourselves into a new whole. My work focuses on this shared human experience of striving to be whole, dealing with the psychological content behind growth, fragmentation, views of self and states of being.

	<u>Title</u>	<u>Media</u>	<u>Original Format</u>
<b>Figure 1:</b>	Veronika: Build II	Digital Photography	Archival Pigment Print, 20 in x 24 in.
<b>Figure 2:</b>	Vanessa: Splice	Digital Photography	Archival Pigment Print, 16.5 in x 20 in
<b>Figure 3:</b>	Veronika: Build I	Digital Photography	Archival Pigment Print, 20 in x 24 in
<b>Figure 4:</b>	Taylor: Splice	Digital Photography	Archival Pigment Print, 20 in x 24 in
<b>Figure 5:</b>	Taylor: Build	Digital Photography	Archival Pigment Print, 16.5 in x 20 in
Figure 6:	Lauren: Build	Digital Photography	Archival Pigment Print, 20 in x 24 in.
<b>Figure 7:</b>	Dotson: Splice	Digital Photography	Archival Pigment Print, 20 in x 24 in.
<b>Figure 8:</b>	Dotson: Build	Digital Photography	Archival Pigment Print, 20 in x 24 in.
<b>Figure 9:</b>	Colin: Splice	Digital Photography	Archival Pigment Print, 20 in x 24 in.
<b>Figure 10:</b>	Colin: Build	Digital Photography	Archival Pigment Print, 20 in x 24 in.



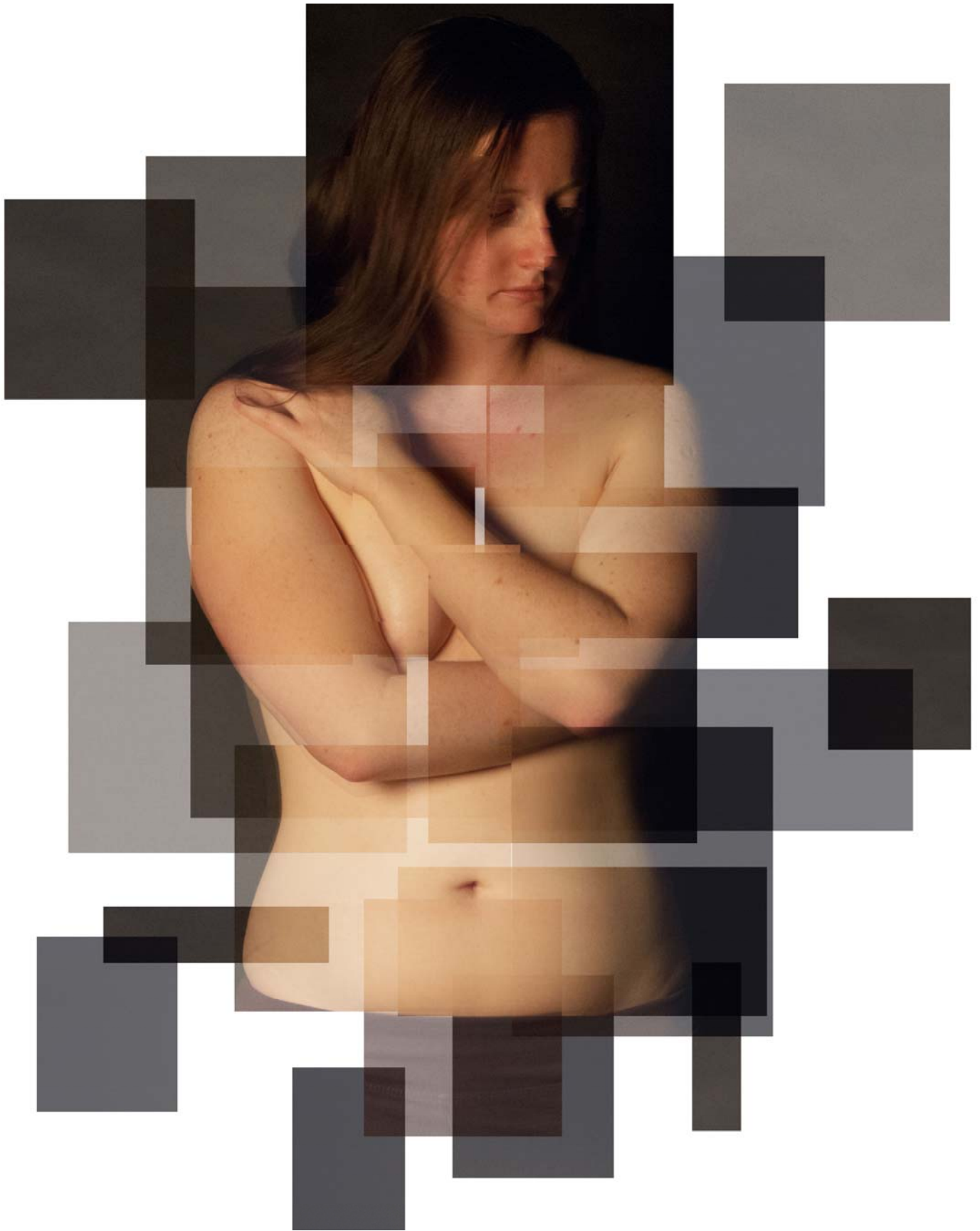
**Figure 1: Veronika: Build II**





Figure 2: Vanessa: Splice





**Figure 3: Veronika: Build I**



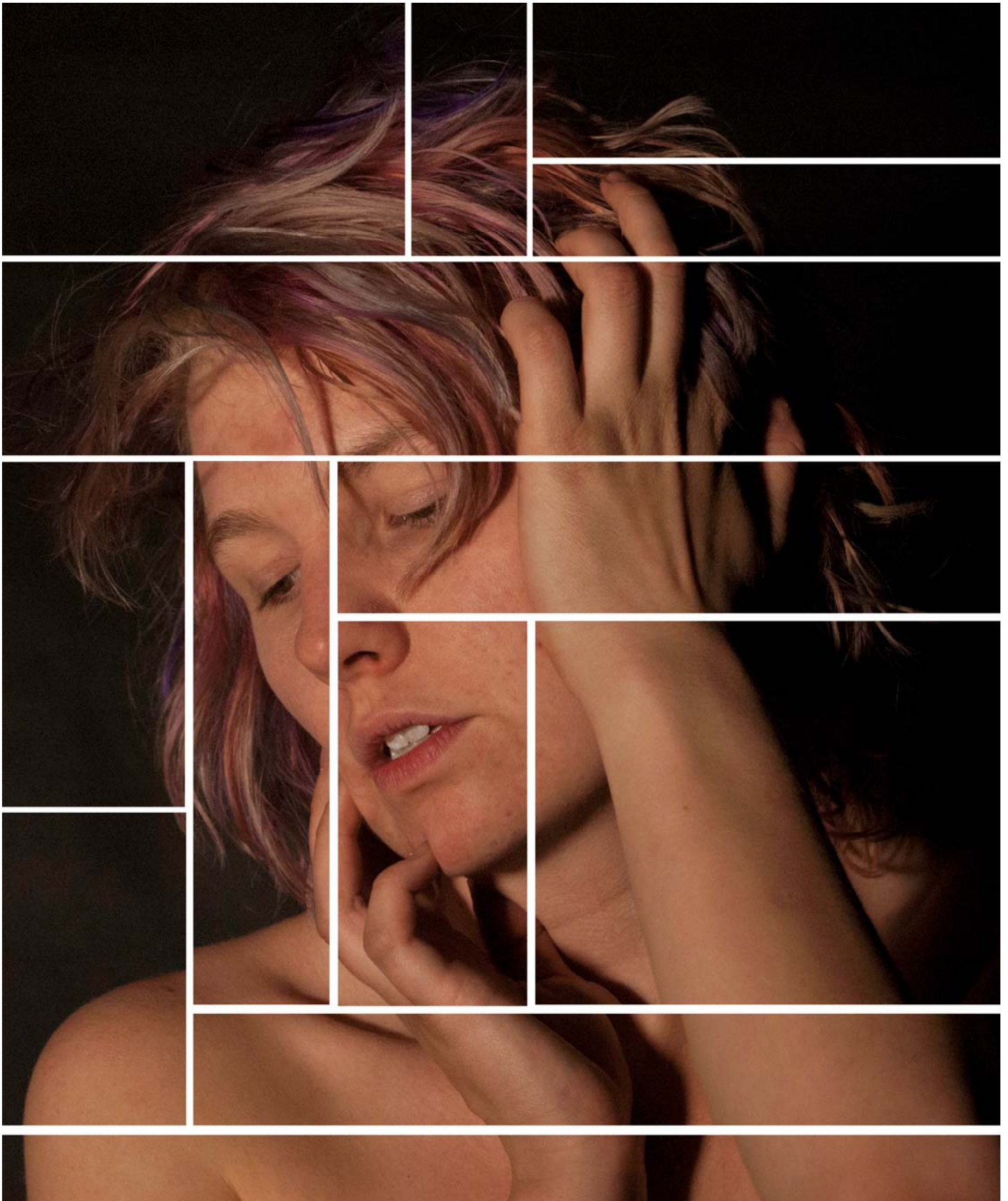


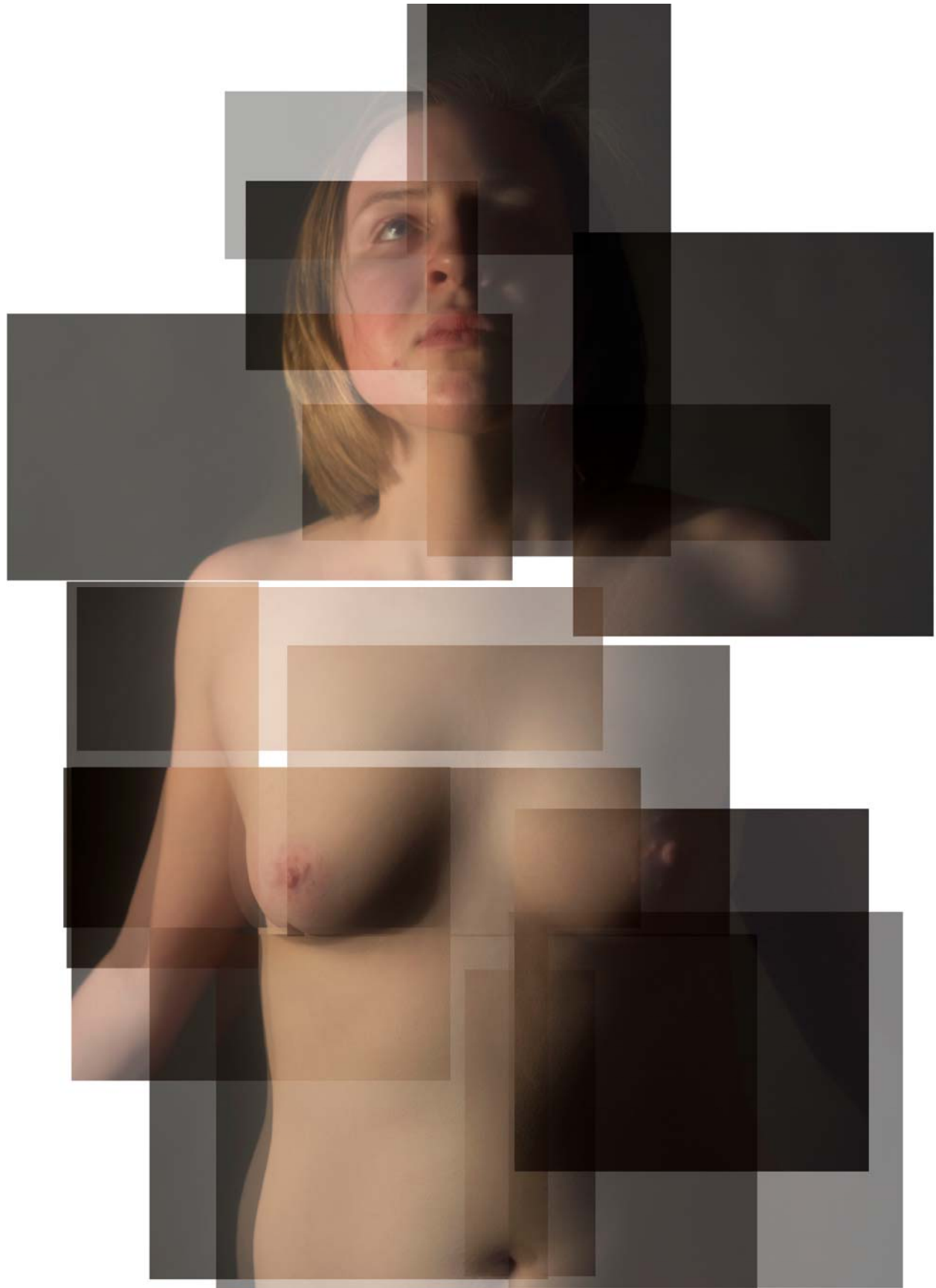
Figure 4: Taylore: Splice





**Figure 5: Taylore: Build**





**Figure 6: Lauren: Build**



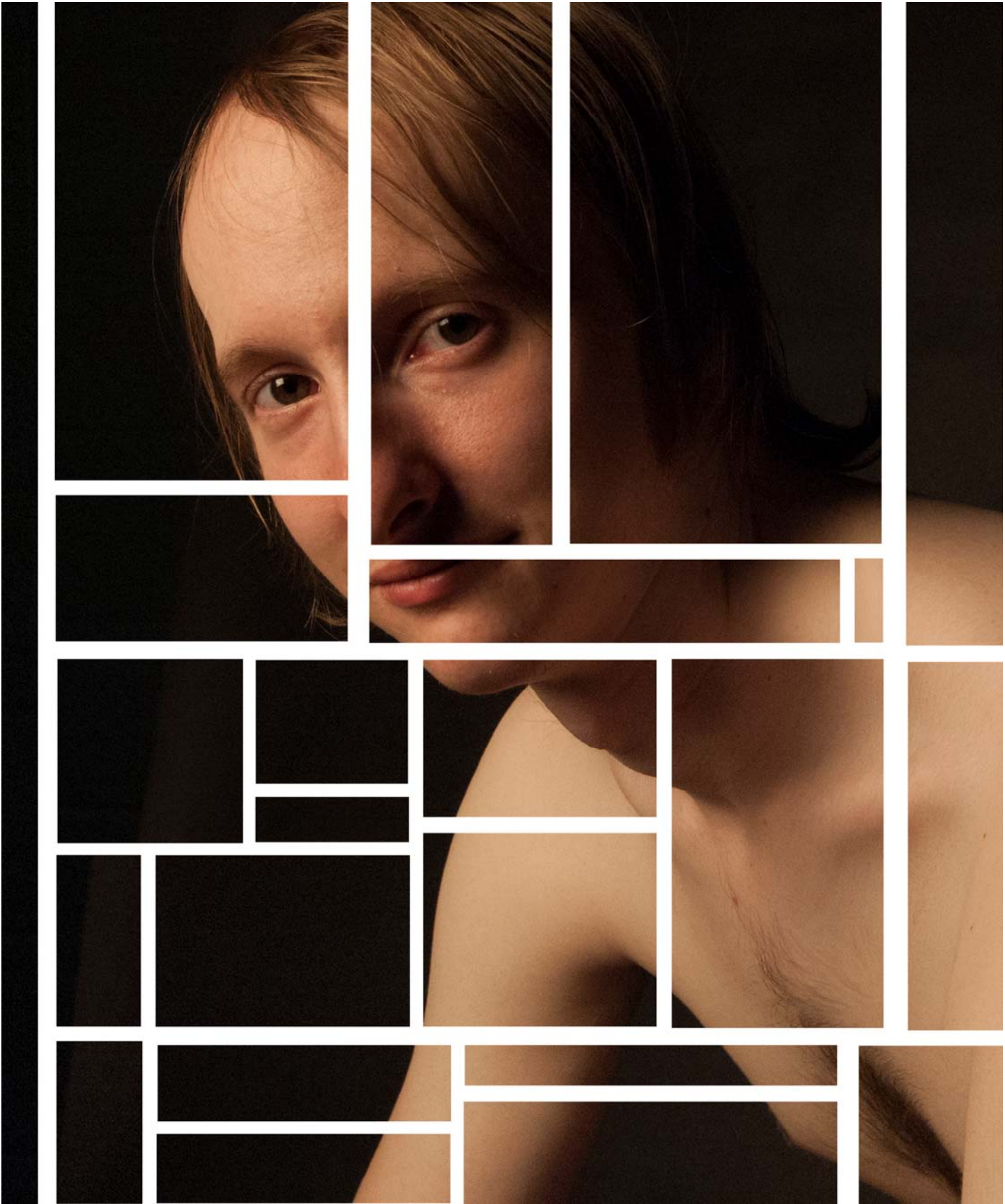
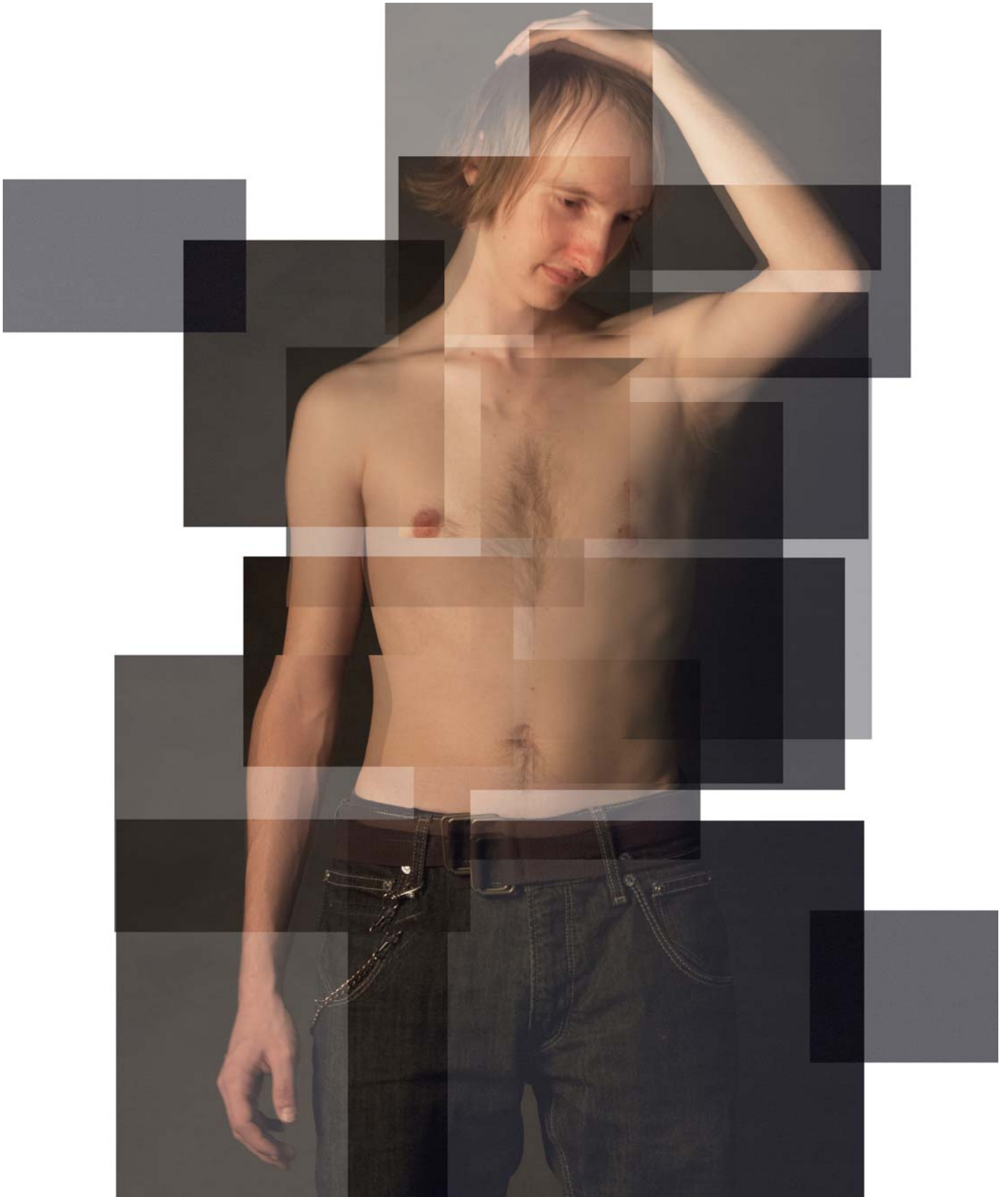


Figure 7: Dotson: Splice





**Figure 8: Dotson: Build**



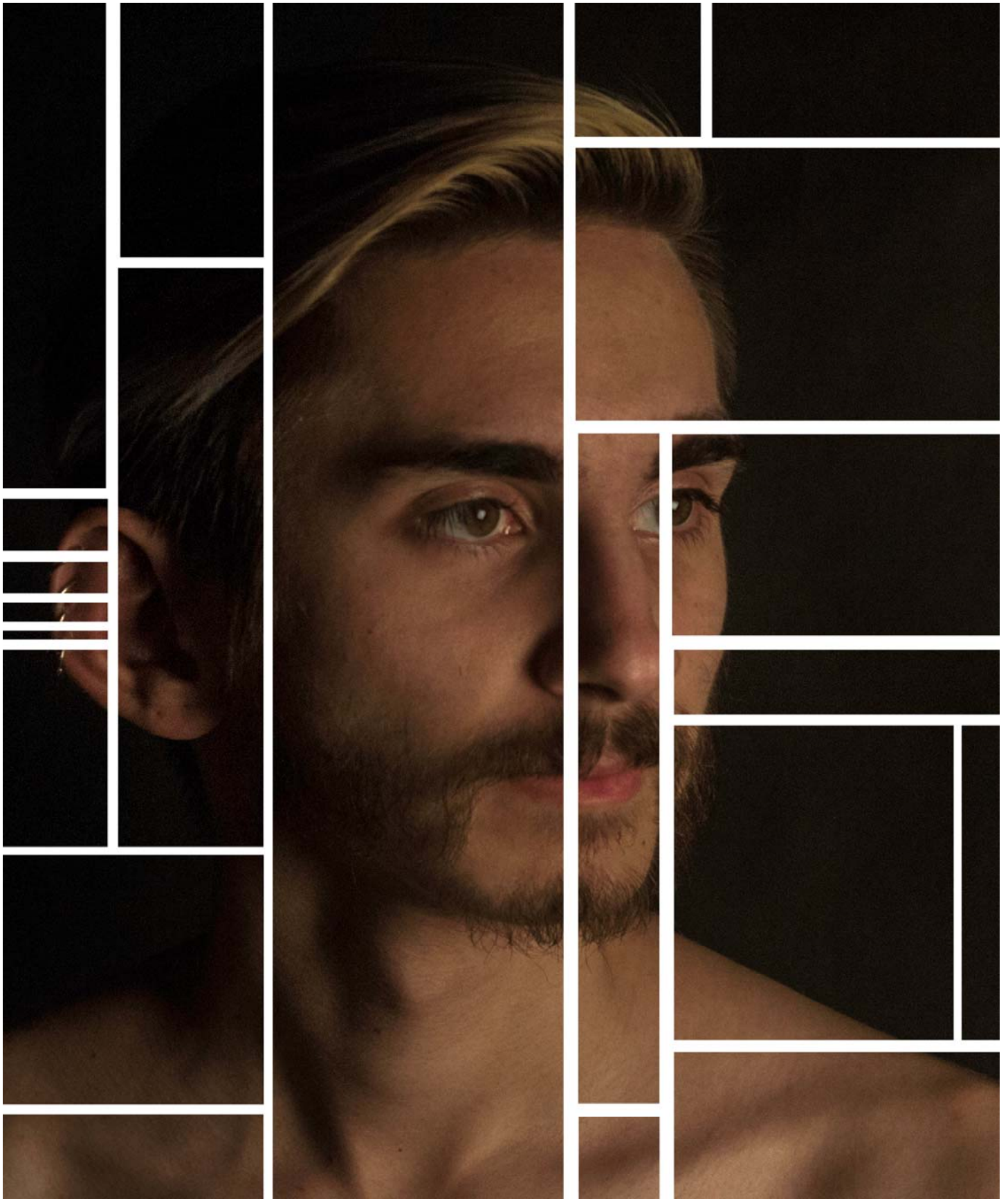


Figure 9: Colin: Splice





**Figure 10: Colin: Build**