

THESIS

THE HUMAN FIGURE AS
FRAGMENTED FORM IN SPACE

Submitted by
David M. Dirrim
Department of Art


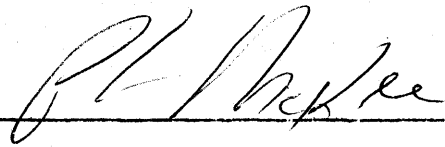
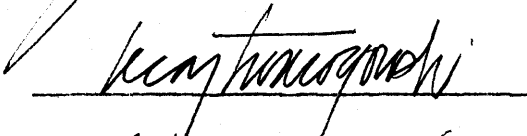
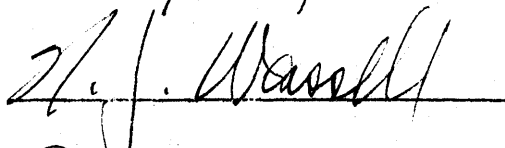
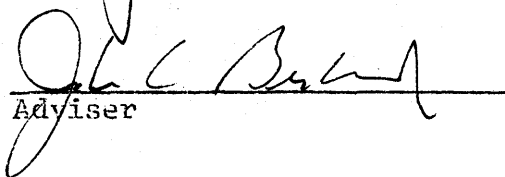
In partial fulfillment of the requirements
for the Degree of Master of Fine Arts
Colorado State University
Fort Collins, Colorado
Spring, 1982

COLORADO STATE UNIVERSITY

April 9, 1981

WE HEREBY RECOMMEND THAT THE THESIS PREPARED UNDER OUR SUPERVISION BY DAVID M. DIRRIM, ENTITLED THE HUMAN FIGURE AS FRAGMENTED FORM IN SPACE, BE ACCEPTED AS FULFILLING IN PART REQUIREMENTS FOR THE DEGREE OF MASTER OF FINE ARTS.

Committee on Graduate Work

Adviser

ABSTRACT

THE HUMAN FIGURE AS FRAGMENTED FORM IN SPACE

The works in the Master's Thesis exhibition are the result of the past five months of growth and study.

The thesis represents the experimentation with the human figure as fragmented form in space, in relationship with a spontaneous intuitive approach to the casting process.

Throughout the creative act, an attempt has been made to utilize the various steps of the casting procedure (modeling, mold making, wax, investing) in such a manner that they become essential in the communication of a spontaneous and immediate attitude.

To further convey a spontaneity in approach, traditional attitudes of refining the work have been replaced with a selective approach to the finishing process. In each of the individual works, a variable use of color has been used in order to convey a natural aging process.

David M. Dirrim
Art Department
Colorado State University
Fort Collins, Colorado 80523
Spring, 1981

TABLE OF CONTENTS

<u>Illustration</u>		<u>Page</u>
1	Desire	2
2	Anima	4
3	July Vestige	6
4	Portrait	8
5	Untitled	10
6	Armor Vestige	12
7	Traces	14
List of Patinas		15
APPENDIX		16

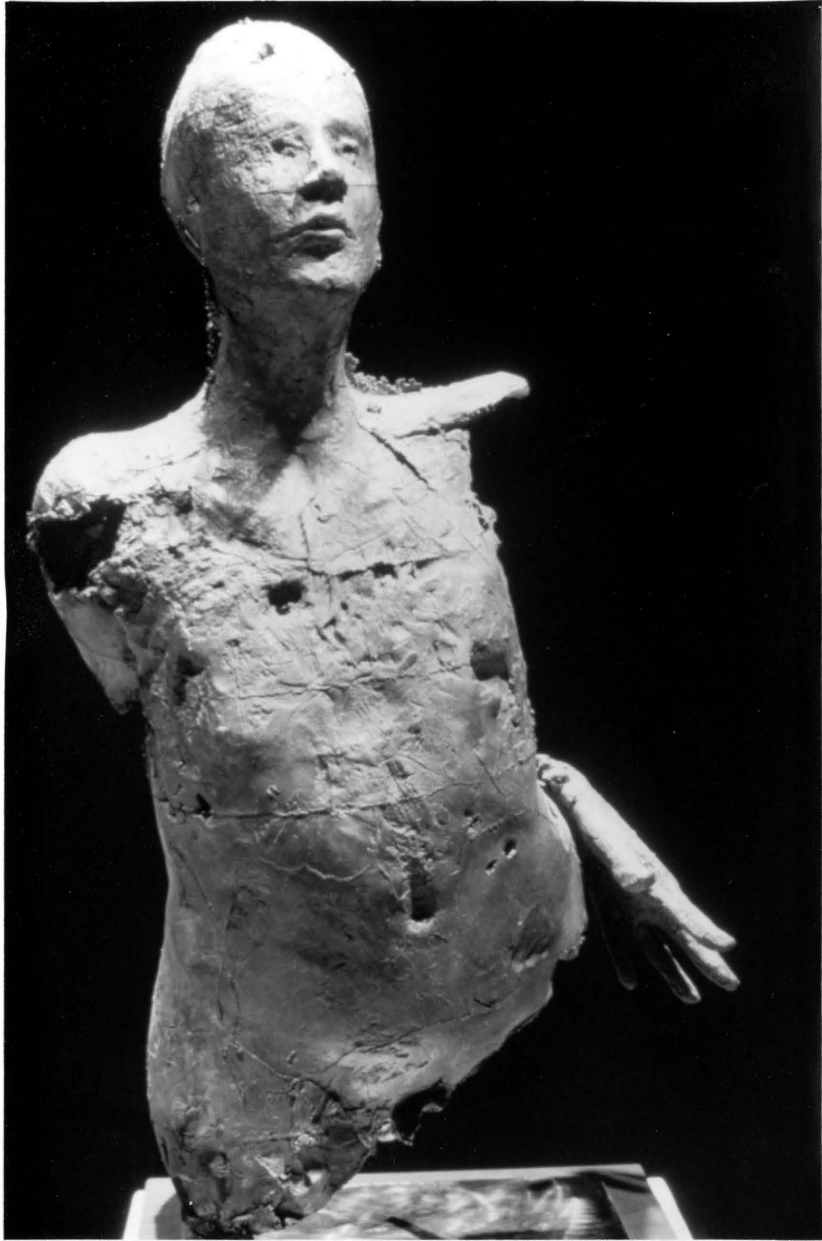
1. Desire - 16" x 16" x 67"

Cast Bronze



2. Anima - 22" x 15" x 37"

Cast Bronze



3. July Vestige - 12" x 10" x 36"

Cast Bronze



4. Portrait - 9" x 7" x 13"

Cast Bronze



5. Untitled - 7" x 9" x 13"

Cast Bronze



6. Armor Vestige - 14" x 12" x 20"

Cast Bronze



7. Traces - 13" x 9" x 27"

Cast Bronze



LIST OF PATINAS

1. Desire
Wire brush, potassium dichlorate, copper green*, red acrylic, buried.
2. Anima
Wire brush, potassium sulfate, copper green*, buried.
3. July Vestige
Wire brush, ferric nitrate, copper green*, wire brush.
4. Portrait
Potassium sulfate, buried, wire brush.
5. Untitled
Wire brush, buried.
6. Armor Vestige
Wire brush, potassium dichlorate, copper green*, buried.
7. Traces
Wire brush, potassium dichlorate, burial, potassium dichlorate.

*Copper green: copper nitrate, calcium carbonate, ammonium chloride, water.

APPENDIX

THESIS PROPOSAL

The thesis will be concerned with the human figure as fragmented form in space. These images, created from the waste mold and cer-perdue casting process, will involve external form in relation to internal space.

Through all aspects of the casting process, an attempt will be made to convey spontaneity and immediacy in the creative act.

David M. Dirrim