



Artist Statement

Nanette Bertoni

When I was young, leaving the ocean after a family trip gave me a sense of emptiness. The ocean represents serenity and contentment. My work speaks of this wonderful and somewhat elusive world. I use various fiber methods such as painting with thread or sculpting weavings, to embody oceanic themed pieces. These forms, using abstraction or representation, help convey my love and interest in life of the ocean. One day I'll visit the ocean again, but until then, I'll keep creating artwork in remembrance of my favorite place on earth.

	<u>Title</u>	<u>Media</u>	<u>Original Format</u>
Figure 1:	Aquarium	Fiber	Hand-dyed cotton, glass beads, foam core board, 6 ½" x 7"
Figure 2:	Sea Floor	Fiber	Hand-dyed cotton, glass beads, Styrofoam, foam core board, 12 ½" x 12 ¾"
Figure 3:	Fan Coral	Fiber	Hand-dyed silk, cotton embroidery floss, wood, 10 ¼" x 13"
Figure 4:	Petrified Wave	Sculpture	Alabaster stone, 13 ¼" x 8" x 5 ½"
Figure 5:	The Reef	Fiber	Wool, cotton, polyester, acrylic, 41 ¼" x 30"
Figure 6:	Escape	Fiber	Rayon thread, tulle, acrylic, 15" x 30 ½" x 40"
Figure 7:	Fishnet	Fiber	Rayon thread, tulle, wool, 40" x 10" x 5"
Figure 8:	Mammals	Fiber	Hand-dyed cotton, acrylic, fishing line, size varies – 24" x 40" x 36"
Figure 9:	Survivor	Fiber	Hand-dyed silk, cotton embroidery floss, commercial cloth, acrylic, 33" x 28"
Figure 10:	Leviathan Part 1	Sculpture	Wood, 20 ½" x 43" x 5"
Figure 11:	Leviathan Part 2	Sculpture	Wood, 20 ½" x 43" x 2"
Figure 12:	Leviathan Part 3	Sculpture	Wood, 20 ½" x 43" x 37"



Figure 1: Aquarium.



Figure 2: Sea Floor.



Figure 3: Fan Coral.

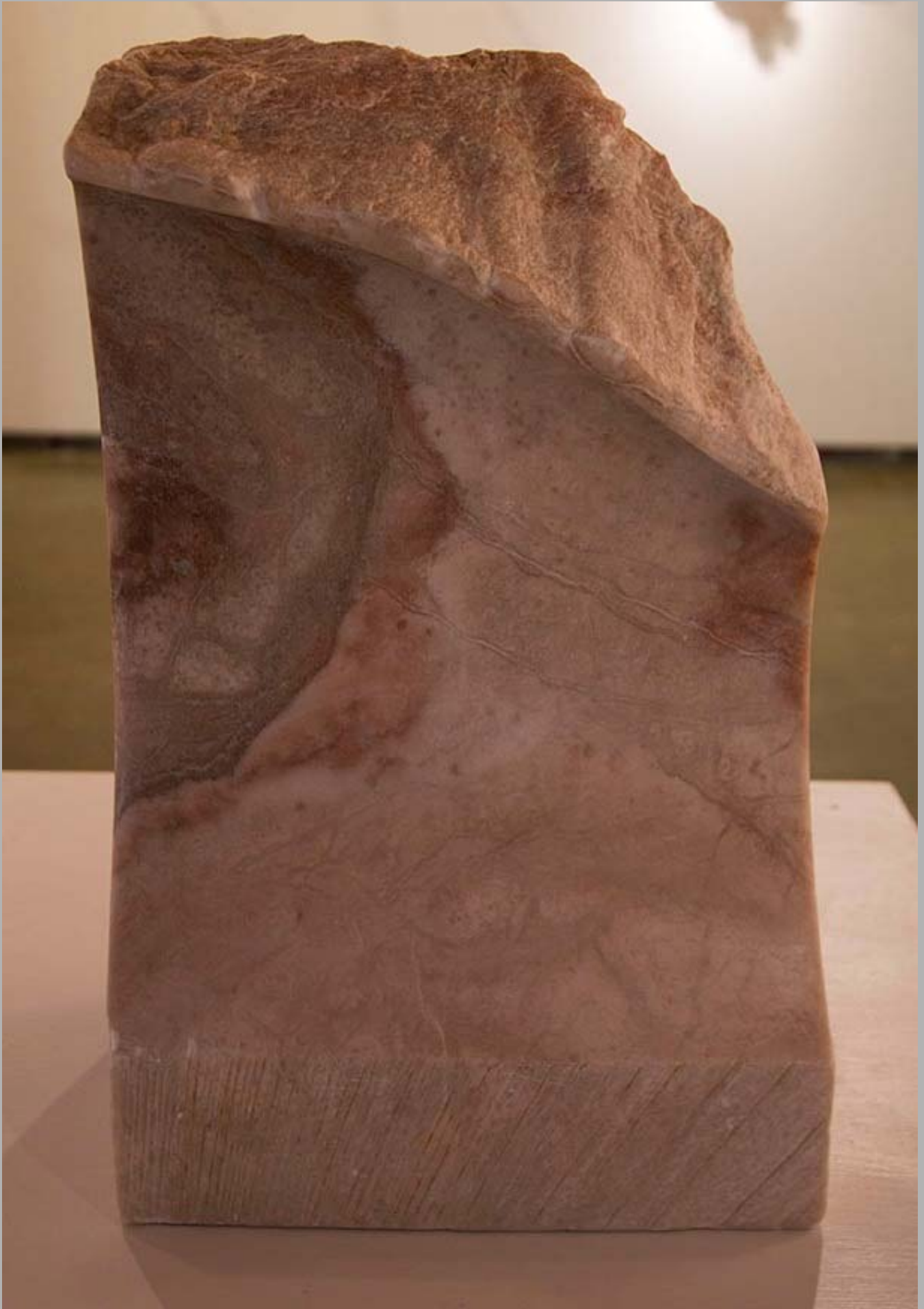


Figure 4: Petrified Wave.



Figure 5: The Reef.



Figure 6: Escape.



Figure 7: Fishnet.



Figure 8: Mammals.



Figure 9: Survivor.



Figure 10: Leviathan Part 1.

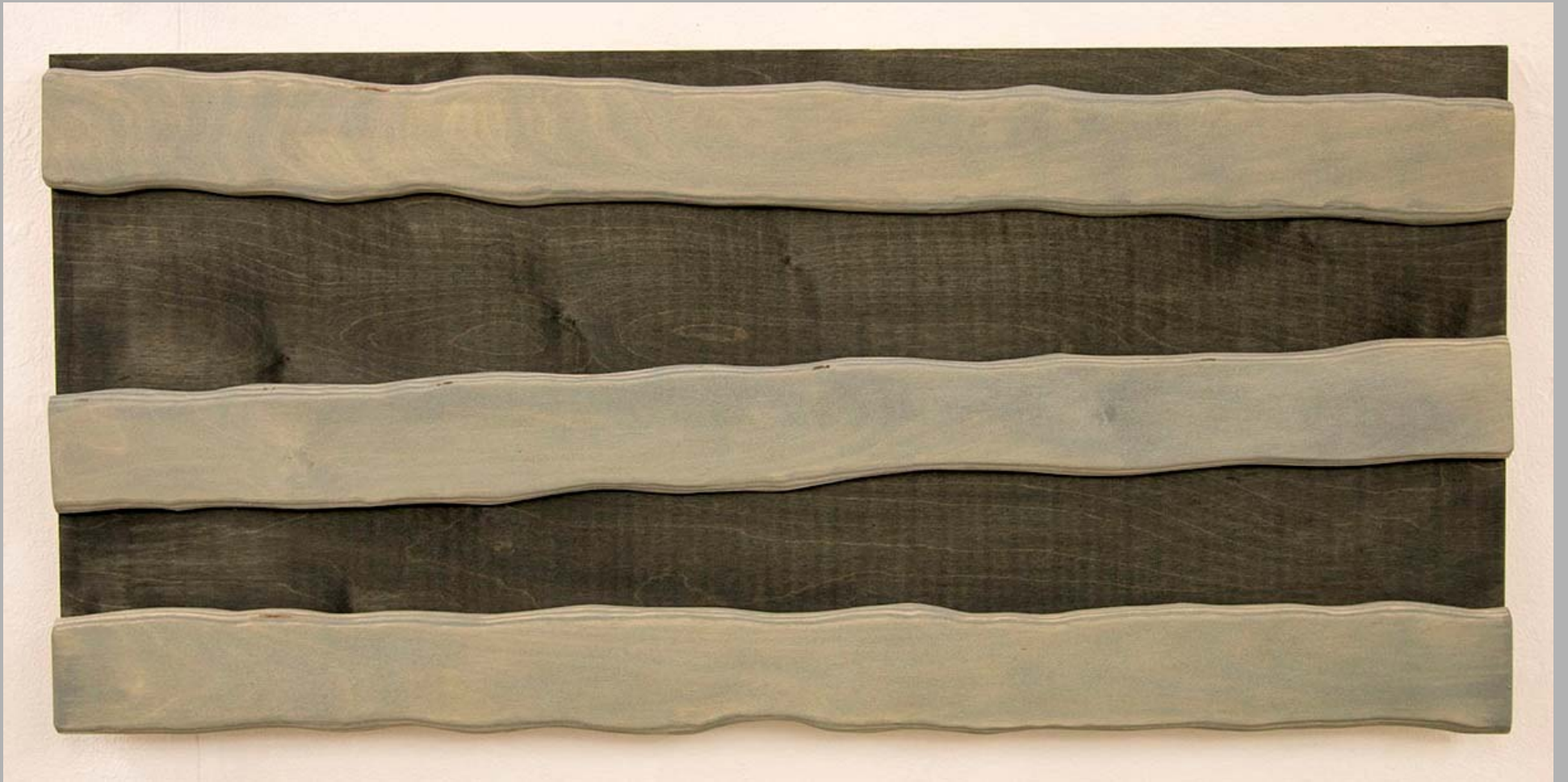


Figure 11: Leviathan Part 2.



Figure 12: Leviathan Part 3.