



Artist Statement

Hyang-Jin Cho

Interested in creating objects with multiple layers, I have explored the concept of crossing boundaries of two opposing sides and developed a unified space created by the manifold relations among objects.

My installation consists of three parts; a figure, a wall piece and vessels. Between the figure and the wall, three pots are placed and arrayed with hanging scrolls with lattice cutouts. The figure with representational facial features and an unbalanced posture contrasts with the abstract form of the wall piece. The wall piece is inspired by the Chinese ancient jade disks which were ceremonial objects of Neolithic culture that symbolized divine power. By composing the jade disks within a rectangular form, I can utilize geometric designs to represent a balanced heavenly realm detached from daily life.

Within this installation, the pots increase the space between a figure and the wall. However, they mediate two independent entities metaphorically by adopting the iconography of China's Neolithic pottery. These pots were modeled after vessels that functioned as a guide for the deceased to heaven. The hanging screens also link two sides as well as add architectural depth. By mediating the silent dialogue between human and an ideal world of harmony, reason and order, the pots and screens emphasize their symbolic meaning on crossing boundaries and unifying space.

<u>Title</u>	<u>Dimensions</u>	<u>Original Format</u>
Figure 1: 通 (tong, to connect): Full	W 17 x H 8 x D 3 ft.	glazed clay and paper
Figure 2: 通 (tong, to connect): Full	W 17 x H 8 x D 3 ft.	glazed clay and paper
Figure 3: 通 (tong, to connect): Figure	H 5 ft.	glazed clay and paper
Figure 4: 通 (tong, to connect): Figure	H 5 ft.	glazed clay and paper
Figure 5: 通 (tong, to connect): Figure - Detail	H 5 ft.	glazed clay and paper
Figure 6: 通 (tong, to connect): Figure - Detail	H 5 ft.	glazed clay and paper
Figure 7: 通 (tong, to connect): Figure - Detail	H 5 ft.	glazed clay and paper
Figure 8: 通 (tong, to connect): Wall	W 32 x H 64 x D 3 in.	glazed clay and paper
Figure 9: 通 (tong, to connect): Wall	W 32 x H 64 x D 3 in.	glazed clay and paper
Figure 10: 通 (tong, to connect): Wall - Side	W 32 x H 64 x D 3 in.	glazed clay and paper
Figure 11: 通 (tong, to connect): Wall - Detail	W 32 x H 64 x D 3 in.	glazed clay and paper
Figure 12: 通 (tong, to connect): Wall - Detail	W 32 x H 64 x D 3 in.	glazed clay and paper
Figure 13: 通 (tong, to connect): Pots	W 6 x H 8 x D 3 ft.	glazed clay and paper
Figure 14: 通 (tong, to connect): Pots	W 6 x H 8 x D 3 ft.	glazed clay and paper
Figure 15: 通 (tong, to connect): Pot 1	H 18 x D 18 in.	glazed clay and paper
Figure 16: 通 (tong, to connect): Pot 2	H 16 x D 16 in.	glazed clay and paper
Figure 17: 通 (tong, to connect): Pot 3	H 18 x D 18 in.	glazed clay and paper



Figure 1: 通 (tong, to connect): Full.

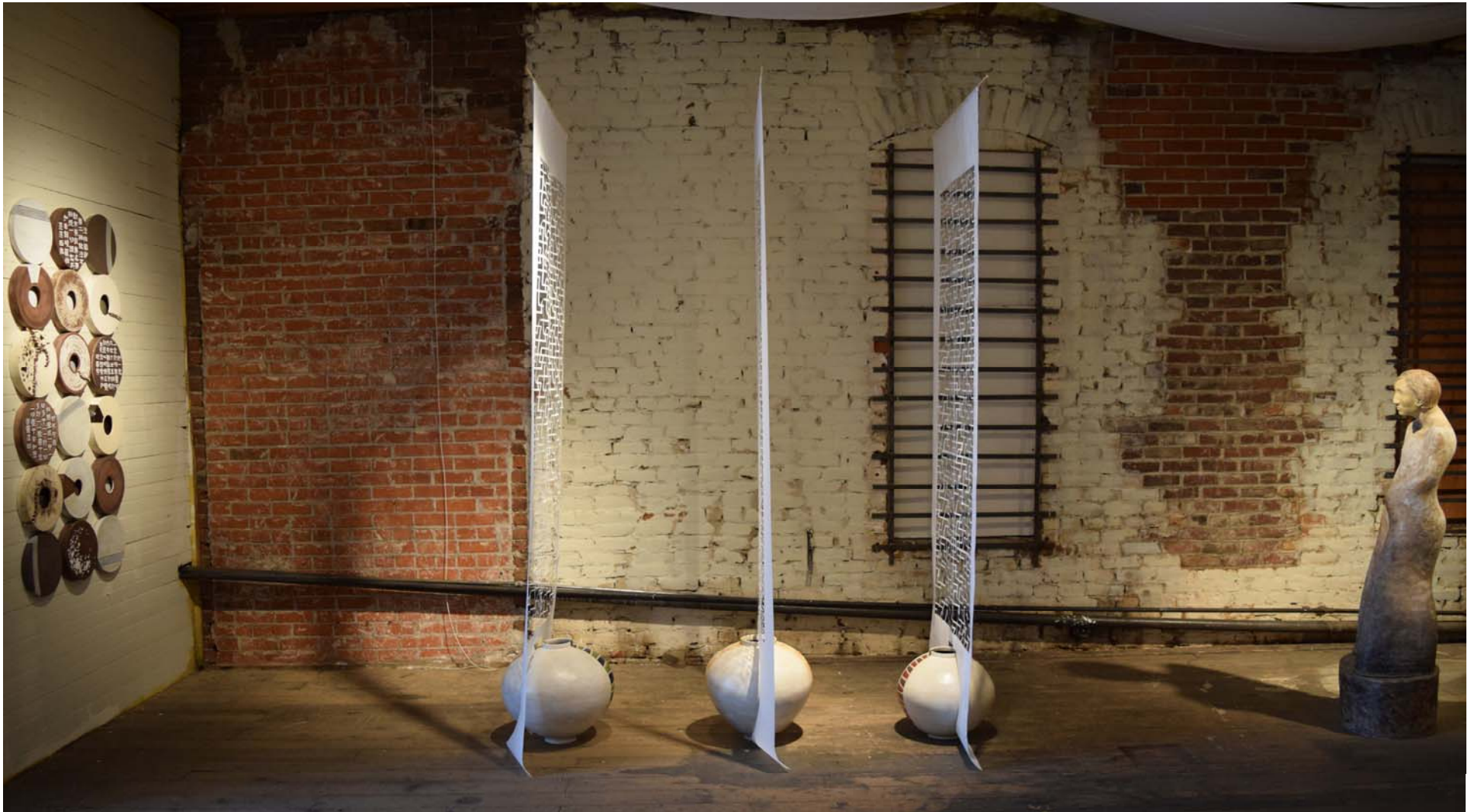


Figure 2: 通 (tong, to connect): Full.

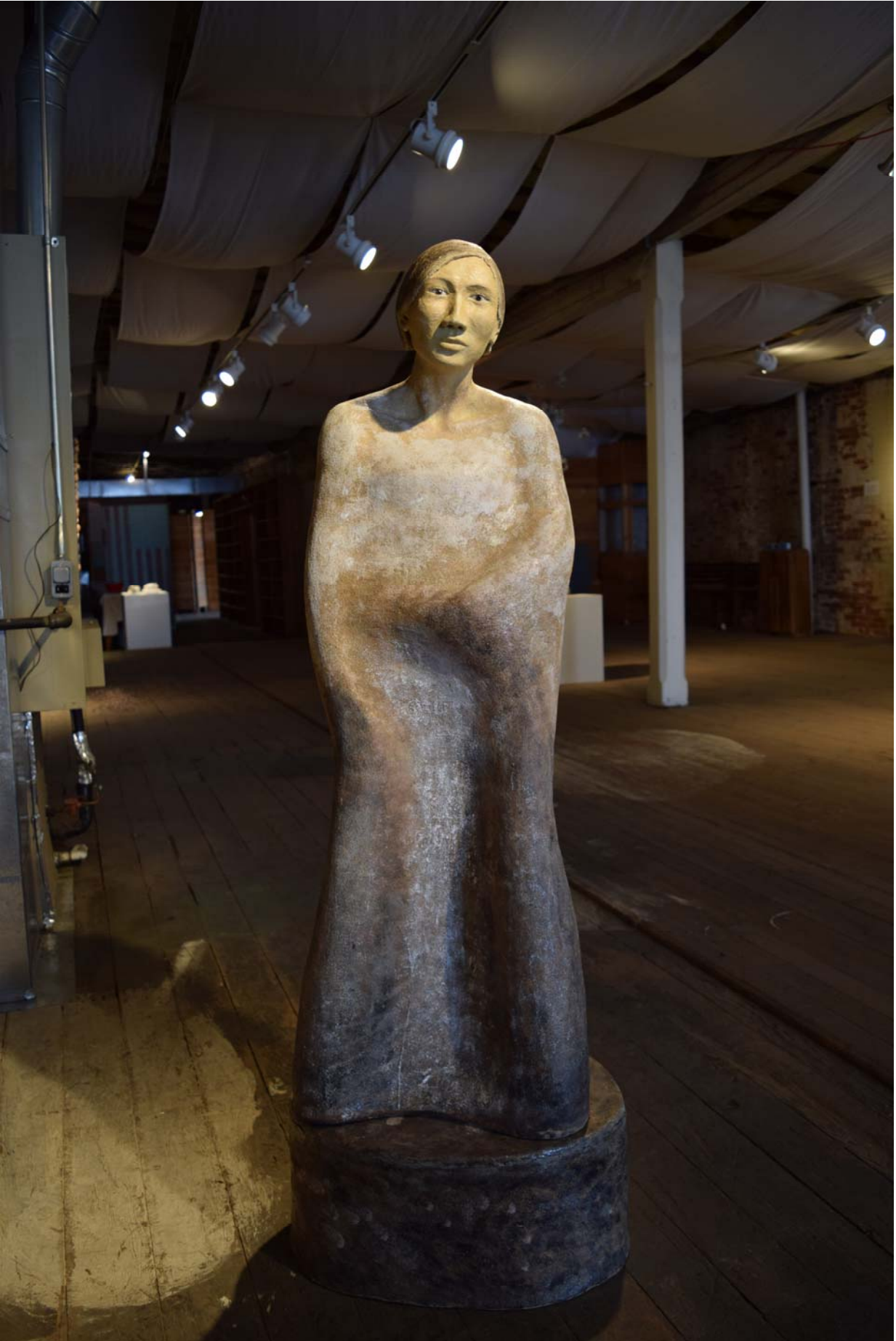


Figure 3: 通 (tong, to connect): Figure.



Figure 4: 通 (tong, to connect): Figure.



Figure 5: 通 (tong, to connect): Figure - Detail.

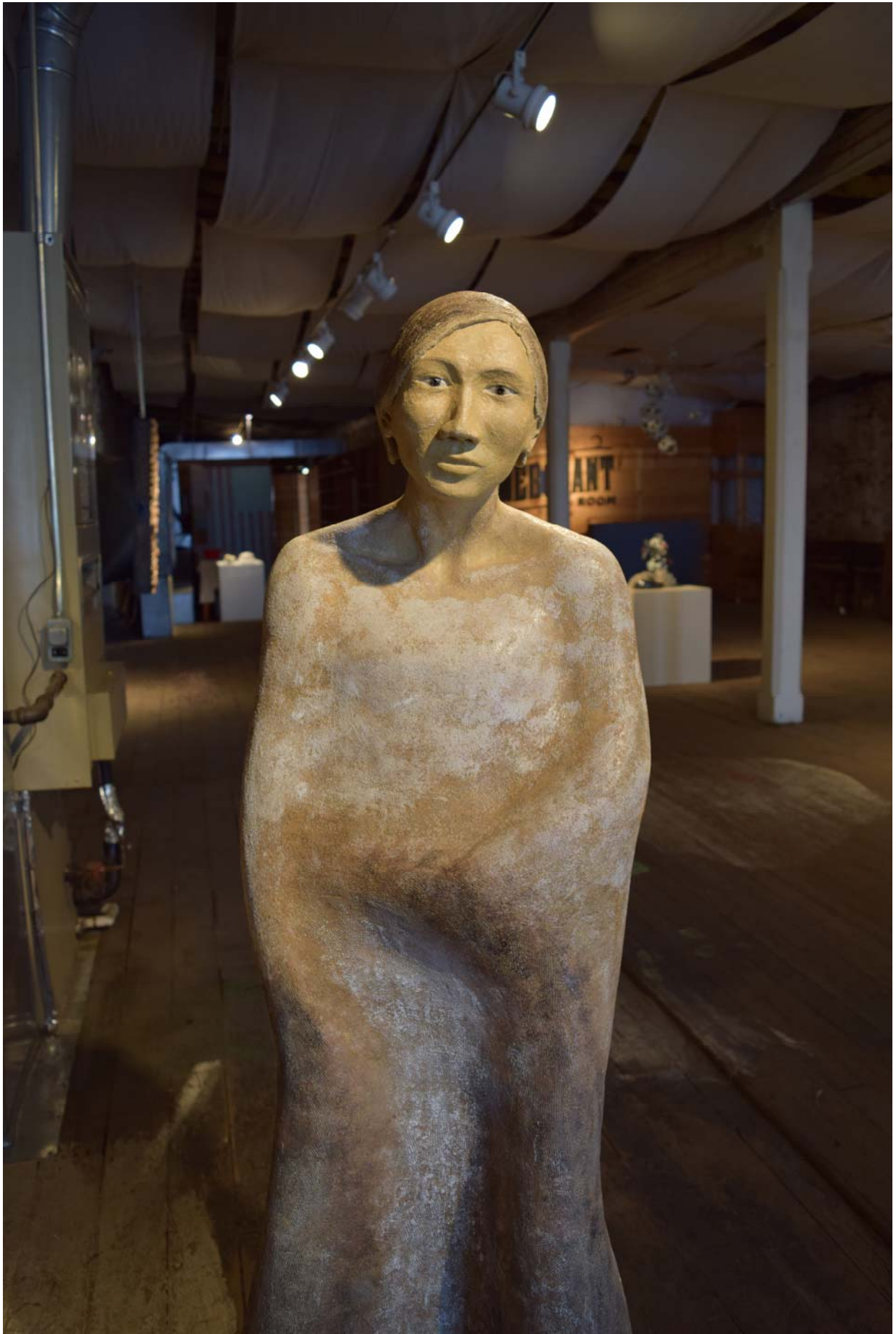


Figure 6: 通 (tong, to connect): Figure - Detail.



Figure 7: 通 (tong, to connect): Figure - Detail.



Figure 8: 通 (tong, to connect): Wall.



Figure 9: 通 (tong, to connect): Wall.



Figure 10: 通 (tong, to connect): Wall - Side.



Figure 11: 通 (tong, to connect): Wall - Detail.



Figure 12: 通 (tong, to connect): Wall - Detail.



Figure 13: 通 (tong, to connect): Pots.



Figure 14: 通 (tong, to connect): Pots.



Figure 15: 通 (tong, to connect): Pot 1.

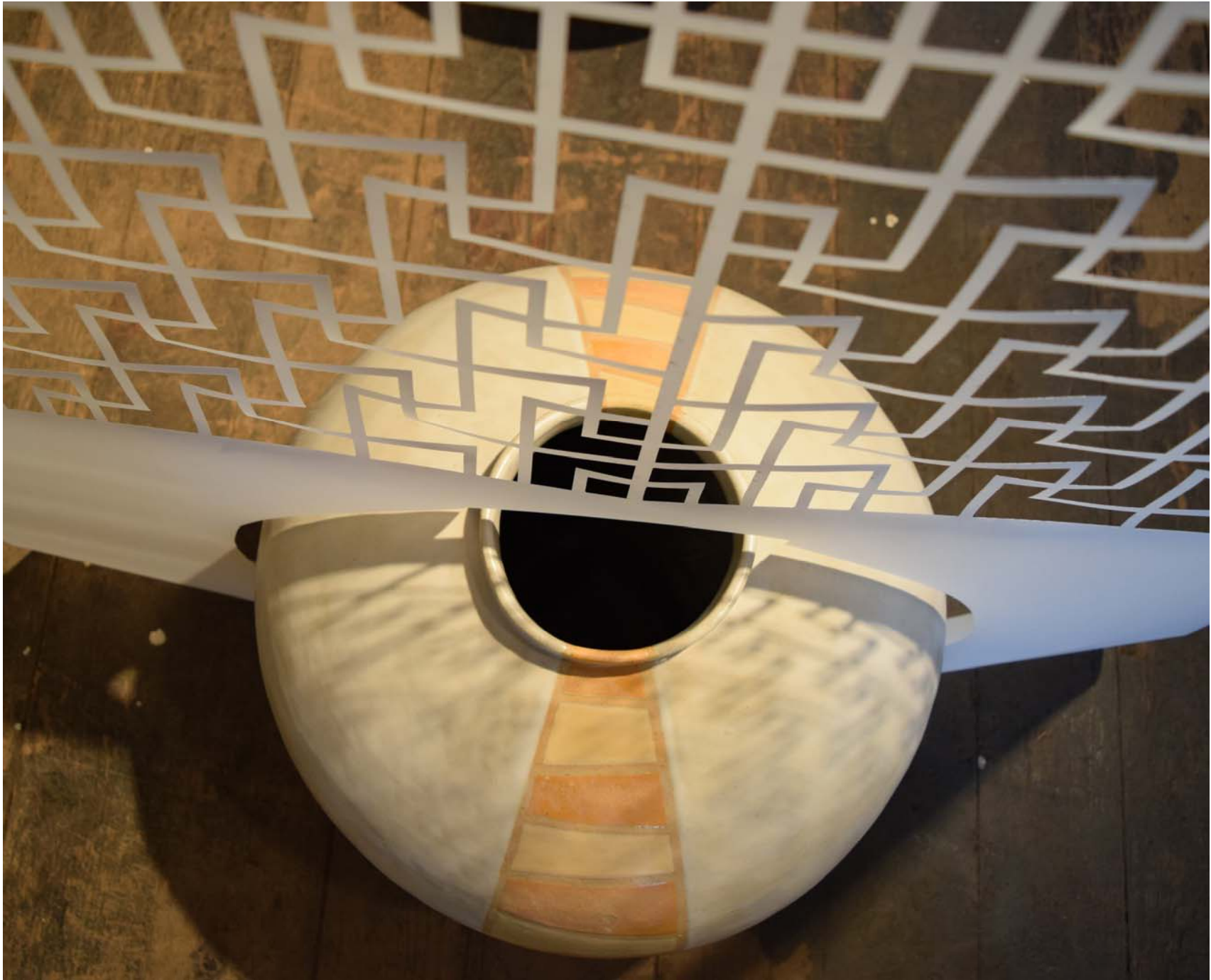


Figure 16: 通 (tong, to connect): Pot 2.



Figure 17: 通 (tong, to connect): Pot 3.

Figure

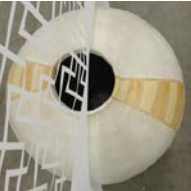
Building Method	Coil building, inner supporting system by coils										
Bisque Firing	Temperature	cone 1									
	Program	4 Segments	1) ^180 F / 12 hr	2) --180 F / 12 hr	3) ^400 F / 12 hr	4) ^ 1600 F / 12hr					
	Kiln	Gas Kiln									
Glaze Firing	Temperature	cone 6									
	Program	4 Segments	1) ^180 F / 2 hr	2) --180 F / 2 hr	3) ^400 F / 7 hr	4) ^ 1750 F / 13hr					
	Kiln	Gas kiln									
Clay Body (100 lb)	DAM sculpture clay		Glaze 1		Glaze 2		Glaze 3		Glaze 4		Glaze Application
	Hawthorn	55	Ebony		Gold matte		Turner Beauty		Shino		
	OM4 Ball Clay	20	Neph Sy	47	Bone Ash	3.6	Dolomite	27.5	Neph Sy	54.5	
	Nepheline syenite	20	G.B.	27	Frit 3134	4.5	Spodumene	25	Spodumene	22.8	
	Silica	10	EPK	6	Talc	3.6	Tin	7.5	Ball Clay	14.9	
	+		Silica	20	Whiting	18.7	Whiting	2.5	G.B.	4.9	
	Medium Grog	10	+		C.Feldspar	47.3	Neph Sy	37.5	Soda Ash	2.9	
	Fine Grog	10	stain 6650	7	EPK	22.3	+		+		
	Fiber	10	Vee Gum	1	+		Vee Gum	1	Vee Gum	1	
	Paper	50	CMC	1	Fe2O3	4	CMC	1	CMC	1	
					Rutile	4					
					Vee Gum	1					
					CMC	1					

Wall Piece

Building Method	Slab Building, Throwing			1) Brown Clay		2) White Clay		
Bisque Firing	Temperature	cone 06 (1860 F)		Hawthorn	55	OM 4 Ball	15	
	Program	Medium Bisque		OM4 Ball Clay	20	Tile 6	6.53	
	Kiln	Electric Kiln		Neph sy	20	EPK	11.83	
Glaze Firing	Temperature	cone 6 (2190 F)		Silica	10	C.Feldspar	18.33	
	Kiln	Electric Kiln		+		Silica	27.8	
				Fe3O4	3	Bentonite	2	
				Stain 6650	1	+		
				Med-Grog	10	Studio clay	7.12	
				Fine Grog	10			
Glaze (100g)	Glaze 1		Glaze 2		Glaze 3			
	Bate's Clear		Turner Beauty		Anton Brown			
	Silica	21	Dolomite	27.5	Neph Sy	22.4		
	KonaF4	35	Spodumene	25	Frit 3134	12.1		
	EPK	10	Sn	7.5	EPK	15.8		
	GB	18	Whiting	2.5	Whiting	15.7		
	SrCO3	5	Neph Sy	37.5	+			
	Whiting	8	+		Fe3O4	1		
	+		Vee Gum	1	Fe2O3	8		
	Sn	3	CMC	1	Sn	2		
	Vee Gum	1			Bone ash	1		
	CMC	1			Vee Gum	1		
				CMC	1			
Glaze Application	Brushing		Dripping		Sponging		Trailing	
								
Surface Decoration	Taping		Laser cutter etching		Epoxy			
								

Pot														
Building Method	Coil building			Clay Body (100 lb)	DAM sculpture clay									
					Hawthorn	5 5								
Bisque Firing	Temperature	cone 06 (1860 F)			OM4 Ball	2 0								
	Program	Medium Bisque			Neph sy	2 0								
	Kiln	Electric Kiln			Silica	1 0								
Glaze Firing	Temperature	cone 6 (2190 F)			+									
	Kiln	Electric Kiln			Med-Grog	1 0								
					Fine Grog	1 0								
					Fiber	1 0								
					Paper	5 0								
Glaze (100g)	Glaze 1		Glaze 2		Glaze 3		Glaze 4		Glaze 5		Glaze 6		Glaze 7	
	Waxy White		Anton Yellow		Greamy Orange		Anton Red		Anton Purple		Anton Green		Anton Blue	
	C. Feldspar	41	Neph Sy	22.4	Plastic Vitrox	3 5	Neph Sy	22.4	Neph Sy	22.4	Neph Sy	22.4	Neph Sy	22.4
	Silica	20	Frit 3134	12.1	G.B.	3 5	Frit 3134	12.1	Frit 3134	12.1	Frit 3135	12.1	Frit 3136	12.1
	Talc	15	EPK	15.8	Dolomite	1 0	EPK	15.8	EPK	15.8	EPK	15.8	EPK	15.8
	G.B.	12	Whiting	15.7	Rutile	2 0	Whiting	15.7	Whiting	15.7	Whiting	15.7	Whiting	15.7
	Dolomite	7	+				+		+		+		+	
	Grolleg	5	FeOOH	1			Stain 6381 Black Berry	2	Stain 6385	5	FeOOH	2	CoO	1

	Frit 3124	30	Rutile	10		Stain 6026 Lobster red	8	Stain 6026	5	CuCo3 (Copper Carbonate)	1	MnO	0.5
	+		Vee Gum	1		Vee Gum	1	Vee Gum	1	Vee Gum	1	Vee Gum	1
	Vee Gum	1	CMC	1		CMC	1	CMC	1	CMC	1	CMC	1
	CMC	1											
Glaze Application	Brushing		Taping - wax resist - brushing (thick)										



Abbreviation	
Anton Clear	Anton
Black Iron Oxide	Fe3O4
Cobalt Oxide	Co
Copper Carbonate	CuCo3
Manganese Oxide	MnO
Nepheline syenite	Neph Sy
Red iron oxide	Fe2O3
Strontium Carbonate	SrCO3
Tin Oxide	Sn
Turner Beauty	Turner
Yellow iron oxide	FeOOH
Custer Feldspar	C.Feldspar
Gerstry Borate	G.B.